

# SharpVue® XT

Capture Images  
to USB Drive

No PC  
Required

30x Optical

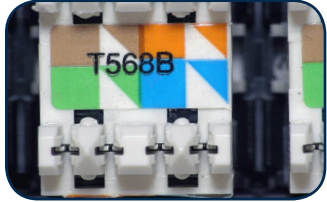
Up to 300x  
Digital

DisplayPort &  
USB Outputs

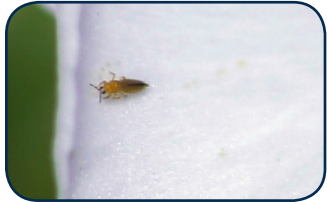
1080p High-  
Res Imaging

Includes  
Imaging  
Software

Annotate &  
Measure



Save images and video,  
no computer required!



Backside



Built-in image capture  
to USB drive

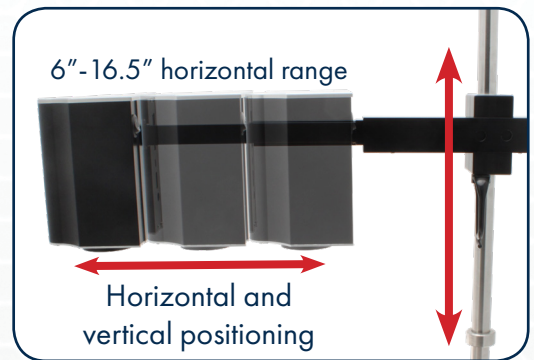
DisplayPort  
output

## Cutting-Edge Technology Meets Flexibility

The SharpVue® XT camera is mounted to a telescoping arm with a **horizontal range of 6in to 16.5in**, giving users the ability to adjust the camera position both horizontally and vertically. This innovative feature allows users to upgrade their magnification or working distance, as well as scan over larger objects. The SharpVue® XT utilizes the same advanced camera technology as the SharpVue® Plus with the same USB/DisplayPort outputs and the ability to save images to a USB drive. This system comes complete with an ESD Safe **22in post stand with a 11.5in x 17.7in base**. Equipped with cutting-edge software that allows users to capture images and videos, make accurate measurements, draw lines and shapes, and more.

Features:

- 30x optical, up to 300x digital magnification
- DisplayPort and USB outputs
- Adjustable vertical and horizontal positioning
- Auto focus camera
- Includes remote control for on-screen settings



SharpVue XT	
Item Number	26700-137
Magnification	30x optical, up to 300 digital
Camera	Auto focus
Illumination	Sold separately
Base Dimensions	11.5in x 17.7in
Outputs	DisplayPort and USB
Operating Systems	Windows 7/8/10
Package Contents	SharpVue® XT Inspection System, remote, power supply, DisplayPort cable, mini USB cable, USB drive, grounding cable, user manual, software