

Use



L Series 105 Gallon Stationary Whirlpool with Legs L-105-SL



Product photo/image above may show some available options

L-105-SL Stationary Whirlpool with Legs is recommended for treatment of extremities, hip and back area and allows space for exercising.

Tank Capacity is 105 gallons.

Whirlpool Tank is 66"L x 24"W x 18"D and is seamless welded construction, fabricated from heavy gauge, type 304 stainless steel, polished to a satin finish. Tank rim is reinforced with a concealed stainless steel rod. Tank bottom is seamless, rounded coved design to minimize bacteria buildup. Whirlpool is fitted with adjustable stainless steel legs and a gravity drain valve.

Turbine Raising and Lowering Device permits adjustment of desired height and direction of water agitation towards the area of the body to be treated. It is spring balanced and provided with a locking device.

Turbine Assembly functions both as agitator and emptying device. It is equipped with Underwriters Laboratory listed 1/2 HP jet pump motor protected with an ABS plastic shell, and automatic thermal overload protector, and lifetime-sealed bearings. All parts contacting the water are stainless steel, chrome plated brass or bronze.

Thermometer is provided with a dual scale,

adjustable calibration, and a stem inserts into a retainer to prevent rattle during whirlpool agitation.

GUIDE SPECIFICATIONS

Provide Stationary Whirlpool (specify model number and options) with a 105-gallon capacity, 66"L x 24"W x 18"D. Whirlpool shall be fabricated from heavy gauge, type 304 stainless steel. Construction shall be seamless welded and exposed surfaces shall be polished to satin finish. Tank shall have a reinforced rim and shall be fitted with a stainless steel skirt flush to the floor line. Bottom of tank shall be a seamless, rounded coved design to minimize bacteria build up. Provide a 2" combination drain and overflow, and a filler spout. Provide a turbine assembly with raising and lowering device which functions both as agitator and emptying device, permits adjustment of desired height, direction of water agitation, and can be locked into place. Turbine assembly shall be UL listed 1/2 HP jet pump motor with automatic thermal overload protector, and lifetime-sealed bearings. Provide a 3" dial thermometer with a stem retainer to prevent rattle when whirlpool is in operation.



Member of
U.S. Green
Building Council



Recycleable
Product

Lo-Boy Whirlpools

MODEL NUMBER AND OPTION SELECTIONS

Series

- L Lo-Boy Series

Capacity

- 105 Gallons

Type

- SL Stationary Whirlpool with Legs

Suffix Options (See Whirlpool Option Section for Details)

- ADH Auxiliary Drain Hose Assembly
- ARS Arm Rest Support
- AS3 Adjustable Suspension Seat
- CTS3 Combination Table with Side Seats
- EG Enviro Glaze Color Powder Coating - Specify Color: _____
(Special Finish Consult Factory)
- GFI Ground Fault Interrupter

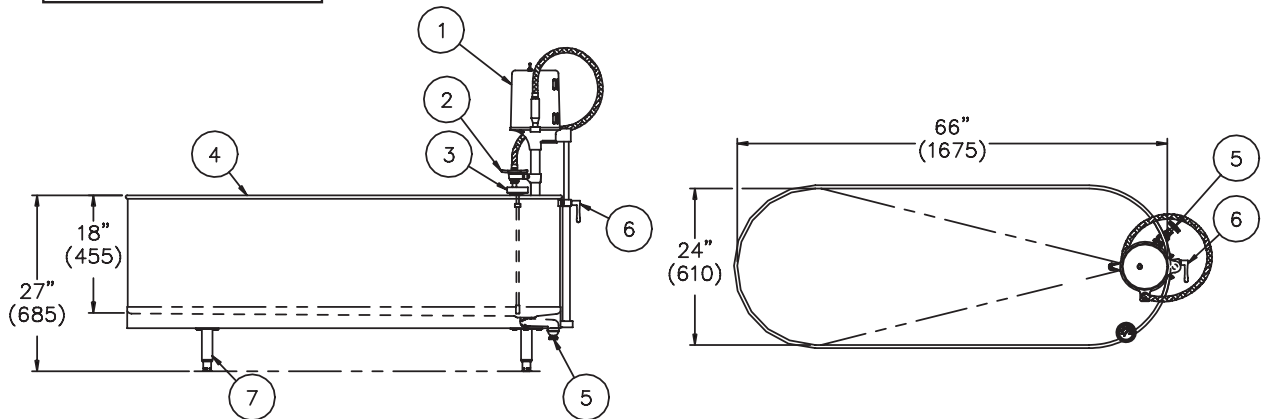
-
- Note: Separate Drain and Overflow Assembly (-SDO) is not available with Model L-105-SL.**

Turbine Assembly

-

All dimension figures in parentheses are in millimeters.

ELECTRIC REQUIREMENTS:
Amps: 8
Volts: 115
Hertz: 60
GFI Receptacle



STATIONARY L-105-SL SERIES WHIRLPOOL

NOTES:

- 1. 1/2 hp Jet Pump Motor.
- 2. Variable Pressure Control.
- 3. Thermometer
- 4. Stainless Steel Tank.
- 5. Auxiliary Drain Valve.
- 6. Turbine Raising & Lowering Device.
- 7. Adjustable Stainless Steel Legs.

SELECTION SUMMARY & APPROVAL FOR MANUFACTURING

Model Number & Options _____ Quantity _____

Company _____ Date _____

Contact _____ Title _____

Approval for Manufacturing/Signature _____