

# WB w/Boa®

## INSTRUCTIONS

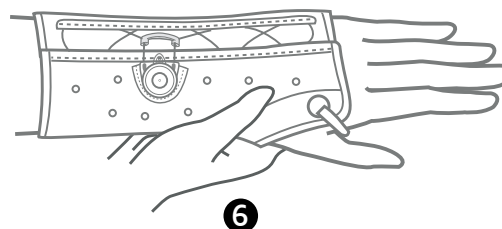
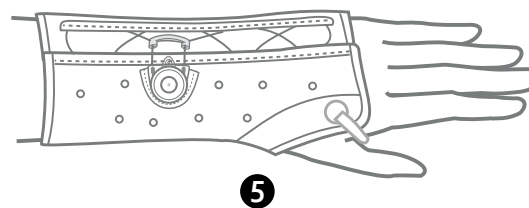
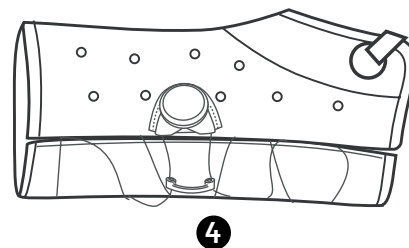
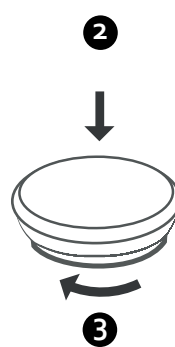
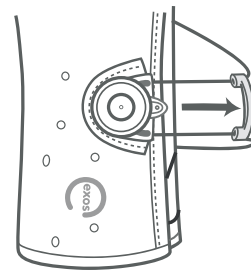
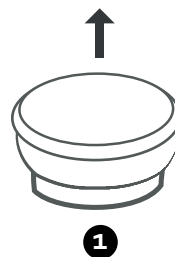
### WRIST BRACE WITH BOA®

antimicrobial treated\*

AEM 5700 Antimicrobial EPA #: Reg. #64881-1

no. 10029 Rev E

USA and International Patents Pending



ENGLISH

Before using the device, please read the entire instruction manual. Correct application and care is vital to the proper functioning of the device.

#### INDICATIONS

The Wrist Brace (WB) with Boa® provides stabilization to the wrist joint.

#### CONTRAINDICATIONS

Patients with known allergies to foams, adhesives, or plastic products.

#### ⚠ WARNINGS and PRECAUTIONS

- ▶ Brace should be fitted by a qualified healthcare professional.
- ▶ Do not heat brace on the body.
- ▶ Check to make sure brace is not too hot prior to application.
- ▶ Brace should be appropriately sized to the patient to ensure proper support and function.
- ▶ Care should be taken with patients with delicate or compromised skin, especially the elderly, not to apply the brace too tightly, which MAY cause pressure and shear to the fragile tissue. PATIENTS SHOULD BE INSTRUCTED ON APPROPRIATE TENSIONING DURING ONGOING USE. An under sleeve or STOCKINETTE may be used for added protection.
- ▶ Do not heat Exos™ products to greater than 212°F (100°C).

#### OPERATING BOA® LACING SYSTEM

##### To Loosen:

- ▶ Lift Boa® Knob. (Figure 1)
- ▶ Pull Tab. (Figure 2)

##### To Close and Tighten:

- ▶ Push Boa® Knob down. (Figure 3)
- ▶ Turn Boa® Knob clockwise. (Figure 3)
- ▶ Boa® Knob must be in the down locked position when wearing brace.

#### HEATING AND APPLICATION

- ▶ Open and unfold brace. (Figure 4)
- ▶ Proper heating temperature is 200°F (93°C).
- ▶ Heat brace in Exos™ oven approximately 3-4 minutes or until brace is pliable. Brace should not be too hot to handle comfortably.
- ▶ Ensure that skin is completely dry before application.
- ▶ Fit brace on patient. (Figure 5)
- ▶ Remove slack in lace by tightening Boa® Knob.  
**Caution: Do not tighten brace fully until brace has returned to room temperature otherwise indentations in plastic may occur.**
- ▶ Mold brace into desired position. (Figure 6)
- ▶ Hook-and-loop fastener strap may be secured in the desired position.
- ▶ Once brace has hardened, the Boa® Knob may be tightened to desired tension.  
**Warning: The brace should not be worn too tightly. This may produce excessive mechanical force or shear forces to the skin.**