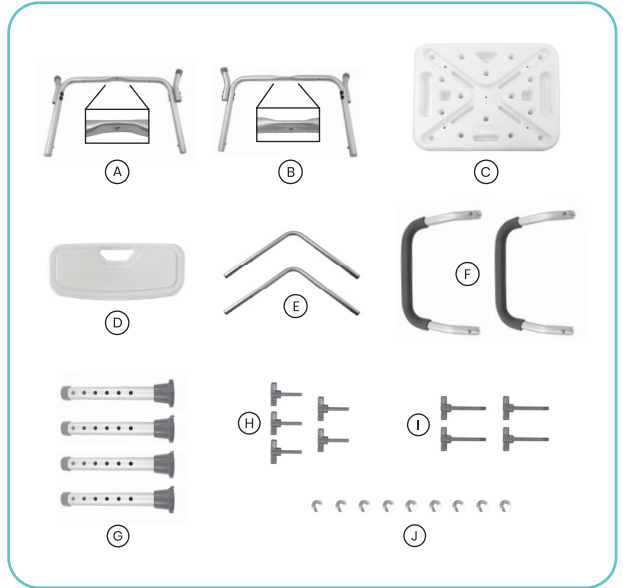


PARTS LIST

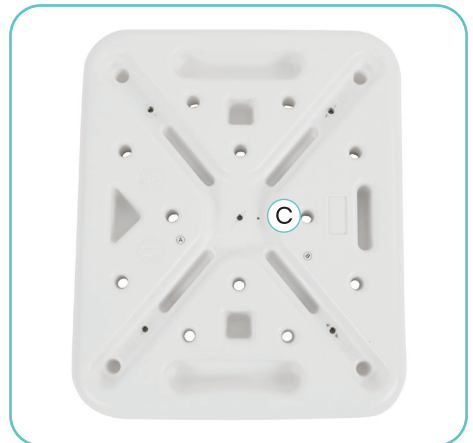
- Ⓐ 1x Leg Frame
- Ⓑ 1x Leg Frame
- Ⓒ 1x Seat Bottom
- Ⓓ 1x Back Rest
- Ⓔ 2x Seat Back L-Shaped Frames
- Ⓕ 2x Armrests
- Ⓖ 4x Leg Extensions
- Ⓗ 5x Short Hand Knob Screws
- Ⓘ 4x Long Hand Knob Screws
- ⓵ 9x Washers



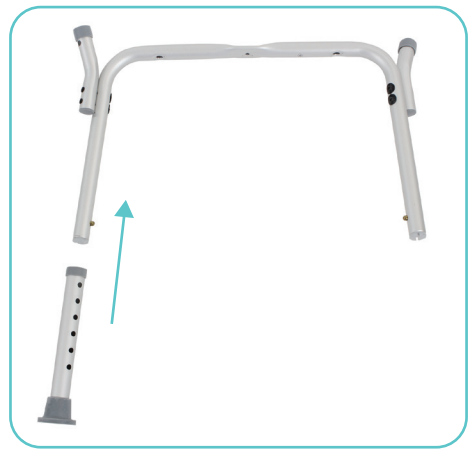
ASSEMBLY INSTRUCTIONS

No Tools Required! 

1. Place Ⓒ Seat Bottom upside down on a flat surface so that screw holes and leg frame channels are showing.



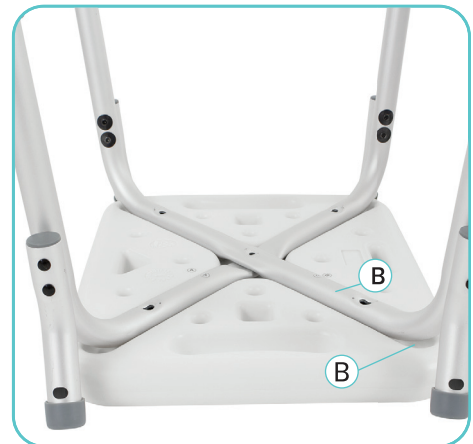
2. Attach the Leg Extensions (G) to the ends of the Leg Frames (A) and (B) by depressing the brass locking pin and sliding the Leg Extension over the end of the Leg Frame. Keep the holes in the Leg Extension in line with the brass locking pin and the pin will pop into place. Press the pin back in and adjust the height as necessary.



3. Place Leg Frame (A) (which has a small 1 written on the crossbar) on the seat Bottom. Align the screw holes.
- Note: fitting the leg frames in the wrong position or in the wrong order will cause the chair to be off-balance or the arm rests to not fit properly in the sockets. Please refer to the marking on the components for guidance.



4. Place Leg Frame (B) (which has a small 2 written on the crossbar) on the seat Bottom overlapping part (A). Align the screw holes. (A) and (B) should fit together like shown in the picture so everything can lay flush.



5. Press down on both (A) and (B) Leg Frames in the middle where they cross, making sure the center screw hole is aligned. Fasten one (H) Short Hand Screw Knob and (J) Washer into the center screw hole. Make sure the washer is on the screw first before attaching to the seat. The washer should rest in the screw hole pocket. Hand tighten the screw securely.



6. Position the chair on its side, so that the seat back can be attached.

7. Place one (E) Seat Back L-Shaped Frame along the left side of the seat, aligning the screw holes. Fasten the seat back frame using two Long Hand Screw Knobs (I) and two Washers (J). Make sure the washer is on each screw first before attaching to the seat. The washers should curve to fit the metal frame. Tighten each screw securely.



8. Repeat with the other (E) Seat Back L-Shaped Frame along the right side of the seat using two Long Hand Screw Knobs (I) and two Washers (J). Make sure the washer is on each screw before attaching to the seat. The washers should curve to fit the metal frame. Tighten each screw securely.



9. Attach the (D) Seat Back to the Seat Back L-Shaped Frames (E) using four Short Hand Screw Knobs (H) and four Washers (J). Make sure the washer is on each screw first before attaching to the seat. The washers should curve to fit the metal frame. Tighten each screw securely.



10. Attach each Armrest (F) by sliding them into the metal frames on the sides of the attached Leg Frames (A) and (B). The arm rests should be fitted so that the brass locking pins point out from the seat (see image). Make sure each armrest is locked in place by clicking the button on the side of the arm rest through the correct hole in the leg frame. The button will make an audible click when locked.



11. Peel off the backing to reveal the sticky side on the foam padding. Place onto the chair carefully and press down good. Wait 2-3 hours before first use.

FAQ

Q: Can I remove the backrest and/or arm rests?

A: Yes, the chair can be used without the backrest or arm rests.

Q: Is it mold and mildew resistant?

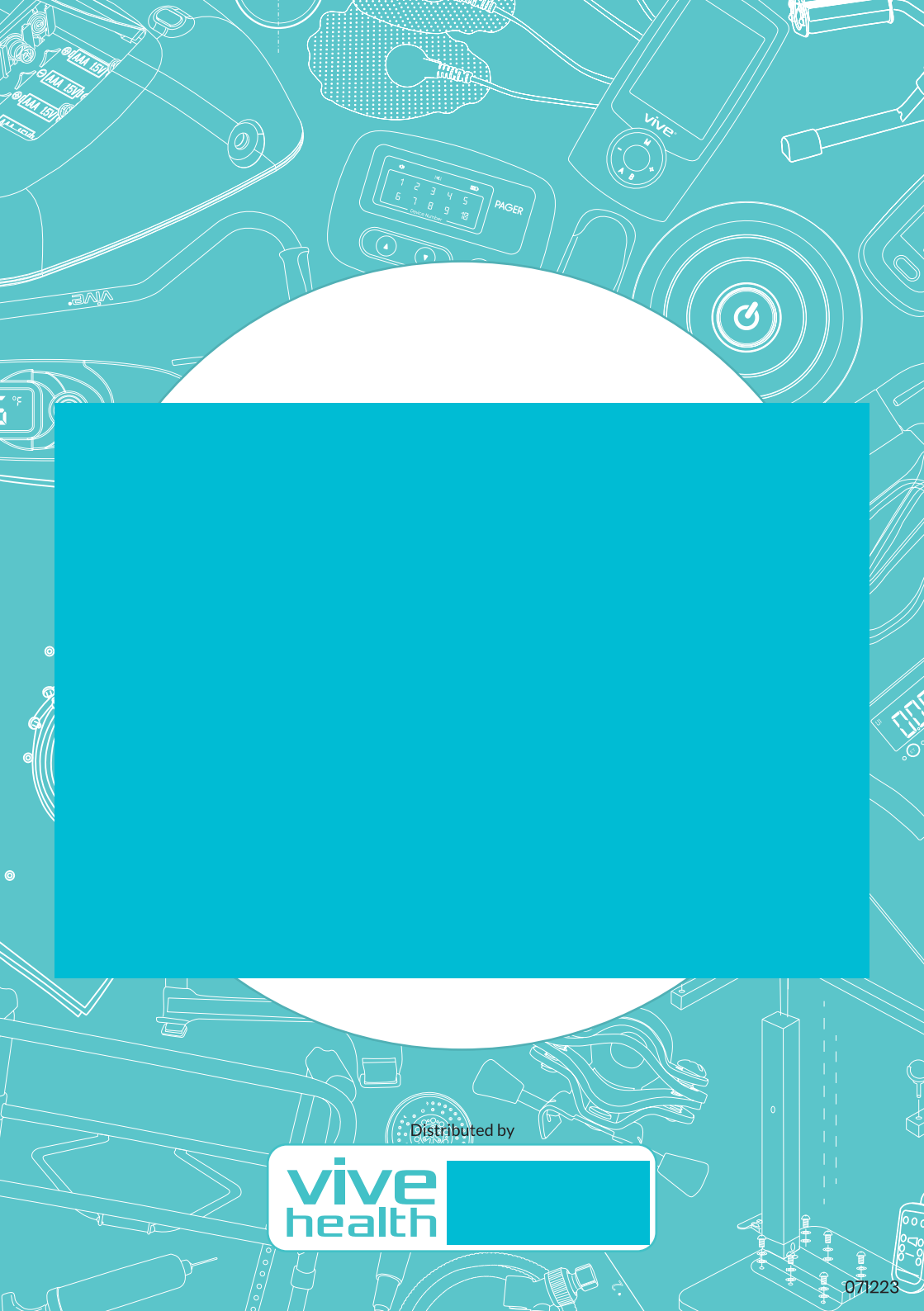
A: Yes, the chair is resistant to mold and mildew, but should still be cleaned to maximize longevity and hygiene.

Q: How do I clean it?

A: The chair can be wiped down with mild soap, an ordinary bathroom surface cleaner, or disinfectant. Also check to make sure water is draining properly through the holes in the rubber feet of the Leg Extensions, and isn't accumulating inside.

SPECIFICATIONS

- Armrest height: 7.3" (installed)
- Seatback height: 12.5" (installed)
- Seat Length: 16 inches
- Seat Depth: 13 inches
- Adjustable Seat Height: 15-20 inches
- Chair Weight: 7.5 pounds
- Maximum User Weight: 300lbs



Distributed by

vive
health

