

VERTETRAC™

3D Mobile Spinal Decompression

Vertetrac's a portable lumbar traction system is an innovative and cost-effective approach to treating Lower Back Pain and Sciatica. Vertetrac outperforms traditional traction by combining traction with horizontal force to enable simultaneous 3D decompressive traction therapy from every dimension.

This lightweight & portable device addresses the cause of the pain, not just its symptoms.

During treatment with Vertetrac, your patients enjoy complete freedom of movement as you provide superior results in less time and at a fraction of the cost.

Why Meditrac ?

Meditrac is a leader in the development testing and manufacture of innovative medical devices for the ambulatory non-surgical treatment of spinal disorders. The "Traction on the Move" concept, developed by a team of orthopedic surgeons, combines the benefits of traction therapy with freedom of movement for rapid relief and a sense of well-being.

Why to choose the Vertetrac

- Safe and effective treatment.
- No drugs, hospitalization or surgery needed.
- Vertical, horizontal, symmetrical & asymmetrical treatment options.
- Complete freedom of movement.
- Only 30 minutes per treatment session.
- Compact, portable and easy to use.
- Insurance reimbursable for clinic.
- Radiculopathy.
- Spinal stenosis due to disc herniation.

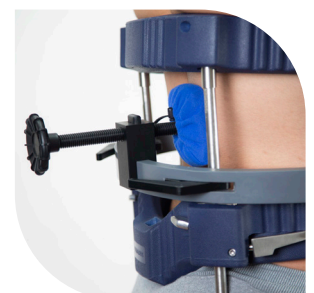
Asymmetric traction



Treatment of Idiopathic Scoliosis

D.B.S. (Dynamic Brace System) for Treatment of idiopathic Scoliosis D.B.S. is an attachment that adjusts traction combined with horizontal pressure force locating it on the apex of the curve. D.B.S. is designed for a few short daily treatments, according to each patient's need.

D.B.S



VERTETRAC™

Traction on the Move By Meditrac

Results that Count

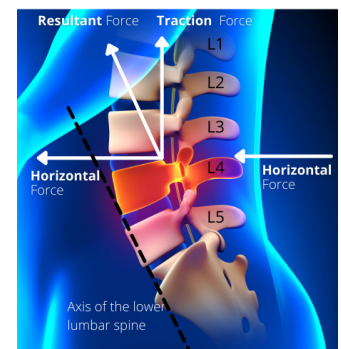
Clinical Facts

Traction decreases intra-discal pressure on the nerve root and dural sac.

Disc disorders are accompanied by muscle spasm and reduced transfer of fluid which accelerates disc degeneration. Research shows that transfer of fluid is essential for the normal biomechanics of the disc and is possible when the spine is in motion.

Treatment with Vertetrac is based on combining motion with traction which simultaneously decreases pressure, enables fluid exchange, improves Range of Motion (ROM) and promotes recovery.

Redirection of Forces schematic diagram



Indications for use:

- All lumbar disc disorders of primary and secondary origin.
- Lumbar back disorders caused by malalignment of the apophyseal joints.
- Lumbar back disorders caused by Spondyloarthritis.
- Scoliosis (Juvenile, adolescent or adult).
- Radiculopathy.

Customizable

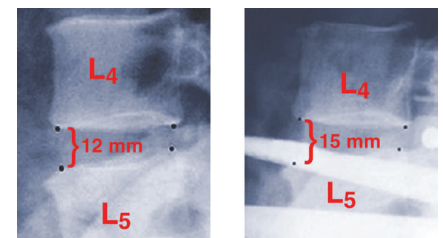
Costeffective

Compact & user friendly

Complete freedom of movement



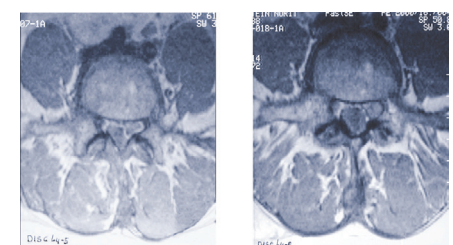
X-Ray Results: Vertetrac expands intervertebral space



Intervertebral space measured at 12mm

Intervertebral space measured at 15mm

MRI Results: Vertetrac Successfully Treats L.B.P



Before Treatment

After Treatment

Warning & Precautions

- According to the FDA in the USA the sale of this device is restricted to individuals by or on the order of a physician only.
- The instructions provided by your health care provider should be followed precisely.
- Do not exceed the recommendations of your health care provider
- The Vertetrac carries the CE mark