

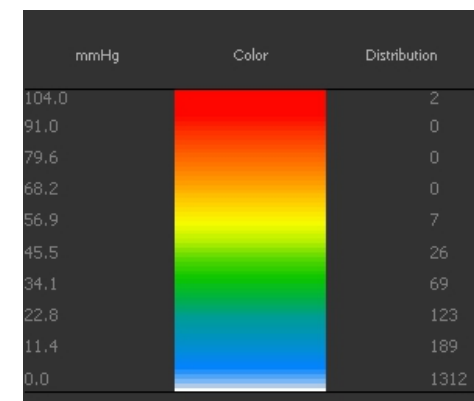
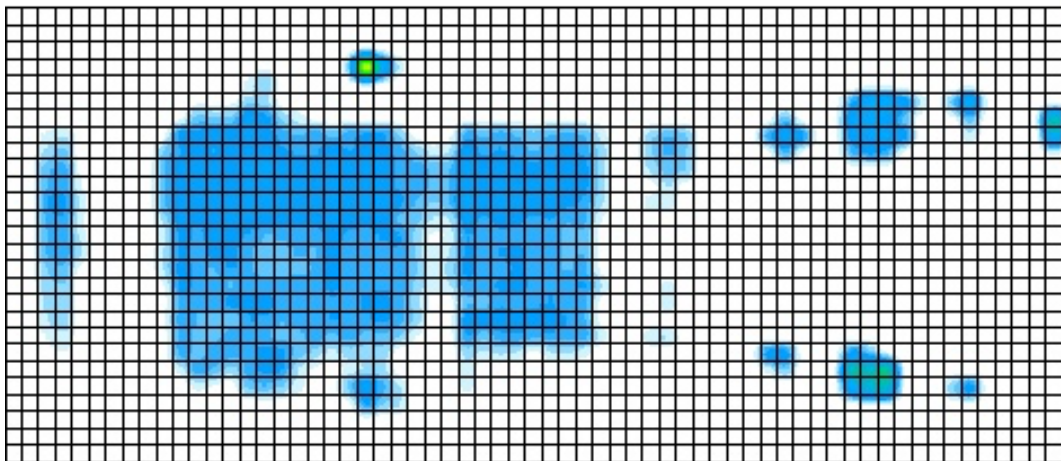


LAY
FLOAT
HEAL

The United Mattress

UM1001

The pressure map below illustrates the power of air and memory foam working together to evenly distribute the weight of the patient's body. The patient's average mm Hg is 7.8 while he is lying on the hospital bed. By evenly distributing the patient's body weight, The United Mattress helps eliminate traditional pressure points and so reduces new pressure injuries from forming and helps to heal existing stage 1-4 pressure injuries.



Male Patient: Height – 6'; Weight- 180 lbs on The United Mattress
(37"wide x 80" long)