



COMFORT[®]
C O M P A N Y

**USER GUIDE
& MANUAL**

BODILINK™ HEAD SUPPORT

COMFORTCOMPANY.COM




UM-BODILINK-HEAD-SUPPORT REV0817

ABOUT US

At *Comfort Company* we are dedicated to creating and manufacturing seating and postural support systems designed for people with a wide range of rehabilitation needs. Whether for pediatric, geriatric, or bariatric needs we are committed to providing our customers with quality products designed for comfort, durability, and ease of use. Our vision is to lead in the development, manufacturing, and delivery of the most innovative seating and positioning products which provide the highest level of comfort, functionality, and quality of life for the user.

CONTACT INFORMATION

 1.800.564.9248

 406.522.8563

 customerservice@comfortcompany.com

 www.comfortcompany.com



Customer Service
Bozeman, Montana



Manufacturing
New Berlin, Wisconsin

CONTENTS

SAFETY GUIDELINES	
Symbols	3
General Safety	3-4
Intended Use/User	4
Parts Detail	5
INSTALLATION & SET UP	
Attachment To Back Supports	6-11
Acta-Back® Series, Acta-Embrace® (any hardware)	6
Acta-Relief™ Head Support Bracket	7
Acta-Relief™ with Compass® 4	7
Acta-Relief™ with Compass® Power Mount	8
Using Radius & Posterior Mounting Plates	9
Mounting to Permobil® with Uni-Track	10
Mounting to Quantum® with TRU-Comfort²	11
Adding a Link to the Hardware	12-13
Connecting Hardware and Support Pads	14
Adjustments	15-16
Finishing Installation	17
CLEANING AND MAINTENANCE	
Cleaning	18
Inspection	19
Reuse	19
Storage	19
Disposal	19
WARRANTY AND REPLACEMENT	
Lifetime Guarantee	19
Replacement Procedure	19

BEFORE USE

The appropriate *Comfort Company* positioning product is intended to improve every day user function and comfort while providing support and stability for a variety of rehabilitation needs. However, prior to using any *Comfort Company* support, it is important that each individual be assessed by a qualified healthcare professional for but not limited to, mobility, nutrition, current condition, goals, and health history. In addition to this initial assessment, individuals should be regularly monitored by a health care professional for any changes in their condition.

This user guide and manual is for reference purposes only and is not intended to substitute for advice given by a physician or other licensed healthcare professional. You should not use this information for self-diagnosis or self-treatment of a health problem or condition. Contact your healthcare provider immediately if you suspect that your health problem or condition has changed or worsened.

Before using, make sure that you are properly trained to operate the equipment for its application. Failure to do so could lead to discomfort, injury or damages.

NOTE: "We," "Us" and "Our" refers to *Comfort Company*. "You" refers to the product purchaser or user.

SAFETY GUIDELINES

SAFETY SYMBOLS



Warning!

Without following the specified procedure, this indicates potentially hazardous conditions that could lead to personal injury, inadequate performance, product damage or malfunction.



Prohibited!

Indicates actions that should NOT be performed at any time under any circumstance. These actions could result in personal injury and/or damage to the product or equipment being used.

GENERAL SAFETY



No Smoking

Although this product meets flammability requirements, we do not recommend smoking while using this product. Damage from smoke and flame is not covered by the lifetime warranty. You must consider additional safety precautions when choosing to smoke while using this product.



Do Not Expose to sources of excessive heat such as open flame or spark.



Do Not Cut or Puncture

Avoid sharp objects. Do not modify the product. Doing so will void its warranty and may lead to personal injury or alter the effectiveness of the product by increasing the risk factors for skin breakdown and/or instability.



You must **READ and FOLLOW** all instructions, notes and warnings included in this manual. Understanding how to care for your product is the key to safe and proper use. Share this information with all caretakers to help them meet your healthcare needs and ensure your safety.



Comfort Company cannot be held responsible for damages or injury due to misuse of the product or failure to follow instructions provided in this manual. Please contact us if you require further assistance in understanding cautions, warnings or instructions for using or maintaining your product.



Installing alternate parts to your wheelchair may change the intended structure and function of the equipment. Be sure to assess the need for additional safety features for your chair such as anti-tip bars or other available options in order to maintain stability during use. Use this manual in conjunction with the user manual that came with your chair to ensure safety guidelines are being met.



Check packaging and inspect all parts for damage before use. **DO NOT USE** if damaged and contact *Comfort Company* immediately for further instruction. Check regularly for loose components and tighten as necessary. Contact *Comfort Company* if wear or damage is noted.



During the first few hours of use, a healthcare professional should be available to observe skin condition and assess the likelihood of skin breakdown. During regular use, periodically check for skin discoloration and/or irritation. If discoloration should occur and not disappear after 30 minutes of non-use, discontinue use and consult with your healthcare provider immediately.



DO NOT place anything in between the user and the product. Additional materials may reduce the effectiveness of the product and increase risk factors for skin breakdown and instability.



Always use the cover and base with any inserts as a complete assembly. Never use a cover other than one intended for your specific product and size.

CARE SYMBOLS



Wash Cover Only - Warm Cycle (Maximum Temperature)



Do Not Wash



Hand Wash



Air Dry Only Hang to Dry



Tumble Dry Low



Do Not Tumble Dry, Steam Clean or Autoclave



Do Not Bleach



Bleach Okay



Antibacterial or Disinfectant Spray



Wipe with Water Only



Do Not Iron

Detailed cleaning instructions on page 18

PLEASE NOTE

The information in this manual was gathered and recorded with the latest specifications available at the time of publication. Due to our continued effort to reassess and improve our products, information found in this manual such as drawings and notes may vary slightly from the product that you purchased. We reserve the right to make changes to products as they are deemed necessary. To check for the latest version of this manual please visit us at www.comfortcompany.com.

The directions provided will help to maintain and extend the life of your product and ensure it is covered by the *Comfort Company Lifetime Guarantee*. Please see complete warranty information on page 19.

SAFETY GUIDELINES

BODILINK™ HEAD SUPPORT SAFETY DETAILS



PROHIBITED! Never use the equipment to maneuver a chair or anything that it is attached to. It is never to be used as a handle, lift, guide or support for anything other than what it was intended. (ex. support during transfers.)



PROHIBITED! Never use the equipment unless all components are fully functional. Any issues should be addressed by contacting your dealer or customer service. Do not attempt to make your own modifications or repairs.



This product is designed for the intended user and use only. Be aware that any modifications could potentially endanger the user, cause discomfort or damage.



This product passed crash testing. However, when possible, do not use head support during transport. Repeated or excessive force (braking or crash) could potentially change adjustment or cause extra wear shortening the life of the product. Use after a crash is not recommended.



Caregivers: It is necessary to learn from a healthcare provider how to properly adjust the equipment for the user's specific positioning needs and goals.



WARNING! Ensure that the product does not interfere with any other chair components. Interference could jeopardize effectiveness and user safety as well as cause damage.



WARNING! It is necessary to fully articulate power recline features to ensure there is no possible equipment interference after installation. Do so slowly while watching closely.



ATTENTION! Make sure that the head support is securely mounted to the back support system and it is adjusted properly each time it is in use.



ATTENTION! Always check that the gear teeth in each joint are aligned for full tooth engagement before final tightening. Failing to do so could cause wear on the teeth leading to parts slipping out of adjustment or hardware failure.



ATTENTION! Unless otherwise specified, fasteners should be tightened to 10.5 Nm (93 lb-in).



CAUTION! Please consider that adding additional links to the hardware may reduce the overall strength.

INTENDED USE - MATERIALS

COMFORT-TEK™ fabric cover is fluid-resistant, easily cleaned at any time and soft to the touch. Comfort-Tek™ fabric has stretch which helps alleviate pressure and conforms to both support pad and user.

STRETCH-AIR™ fabric cover is 2-Ply designed to be breathable on the surface for comfort while the bottom layer is fluid-resistant for cleanliness. The multi-directional stretch allows for optimal conforming to the user and support pad shape.

GLIDEWEAR® fabric cover is intended for maximum hair and skin protection by reducing shear. Recommended most for those with abnormal tone causing involuntary movements, difficult postures and frequent repositioning

All fabrics used in BodiLink™ Head Support covers are latex-free. Comfort-Tek™ fabric is used on all head support pad covers along the outer edge.

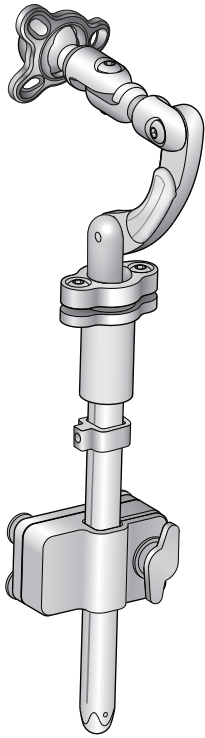
BodiLink™ Head Support pads come in 2 levels of firmness (soft and extra soft). Both use a layer of Viscoool® extra soft foam over a high resiliency foam base layer. This combination allows for immersion and conforming to the user for optimal surface contact, comfort and pressure redistribution.

INTENDED USER

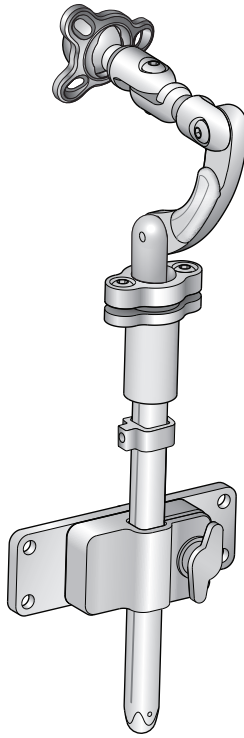
BodiLink™ head support is intended for those with positioning and support needs as deemed necessary by a qualified healthcare professional.

BodiLink™ head support offers a wide variety of available positions to accommodate user rehabilitation needs and goals while allowing for function and comfort. The sizes available and range of adjustability fit pediatric to full grown users and should be matched by the healthcare provider to suit the user needs. Adjustments or replacement components may be necessary as changes in condition occur or to accommodate developments such as growth.

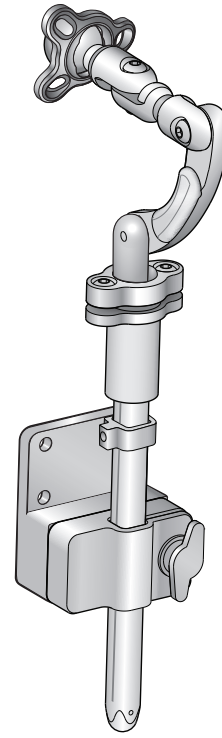
PARTS DETAIL



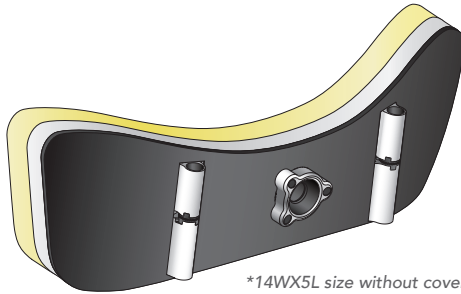
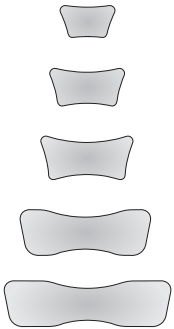
**BODILINK™ HEAD SUPPORT
REMOVABLE HARDWARE**
(BL-HSH-FX)



**BODILINK™ HEAD SUPPORT
REMOVABLE HARDWARE FOR
QUANTUM®** (BL-HSH-FX-PW1)

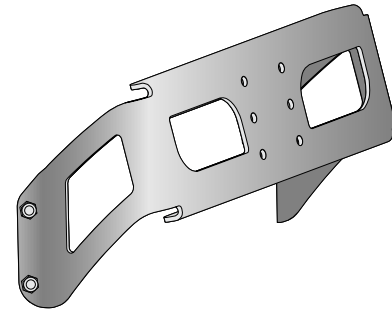


**BODILINK™ HEAD SUPPORT
REMOVABLE HARDWARE FOR
PERMOBIL®** (BL-HSH-FX-PW2)



*14WX5L size without cover shown

BODILINK™ HEAD SUPPORT PAD	Soft	Extra Soft
6" W X 3.5" L	(BL-HSP1-6W3L)	(BL-HSP2-6W3L)
8" W X 4" L	(BL-HSP1-8W4L)	(BL-HSP2-8W4L)
10" W X 5" L with adjustable wings	(BL-HSP1-10W5L)	(BL-HSP2-10W5L)
14" W X 5" L with adjustable wings	(BL-HSP1-14W5L)	(BL-HSP2-14W5L)
18" W X 5" L with adjustable wings	(BL-HSP1-18W5L)	(BL-HSP2-18W5L)



ACTA-RELIEF™ HEAD SUPPORT BRACKET
For 14"W Back Supports (HSH-AR14W)
For 16"W Back Supports (HSH-AR16W)
For 18"W Back Supports (HSH-AR18W)
For 20"W Back Supports (HSH-AR20W)

ADDITIONAL BODILINK™ HEAD SUPPORT HARDWARE

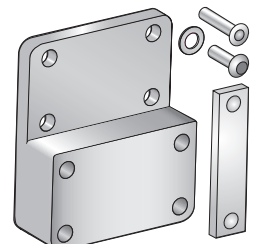
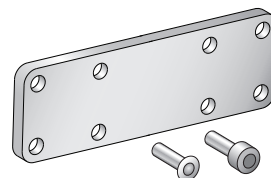
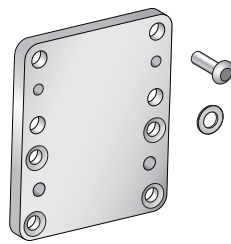
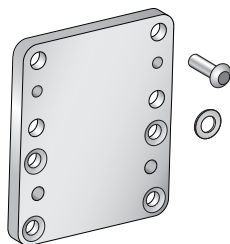
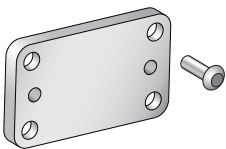
EXTRA SPACER PLATE
(BL-HSH-SPCR)

RADIUS MOUNTING PLATE
(BL-HSH-SPCR-RAD)

POSTERIOR MOUNTING PLATE
(BL-HSH-SPCR-POST1)

QUANTUM MOUNTING PLATE
(BL-HSH-SPCR-POST2)

PERMOBIL MOUNTING PLATE
(BL-HSH-SPCR-TRCK1)



INSTALLATION (STANDARD)

For Acta-Back®, Acta-Back® Deep, Acta-Back® Contour, Acta-Back® LTS, Acta-Embrace®, Acta-Embrace® LTS, & Visco Back®. All tools needed are provided.

Note: Head support pad is not shown but in most cases will come attached to hardware. See page 14 for instructions on attaching head support pad. Instructions for adding a link on pages 12-13.

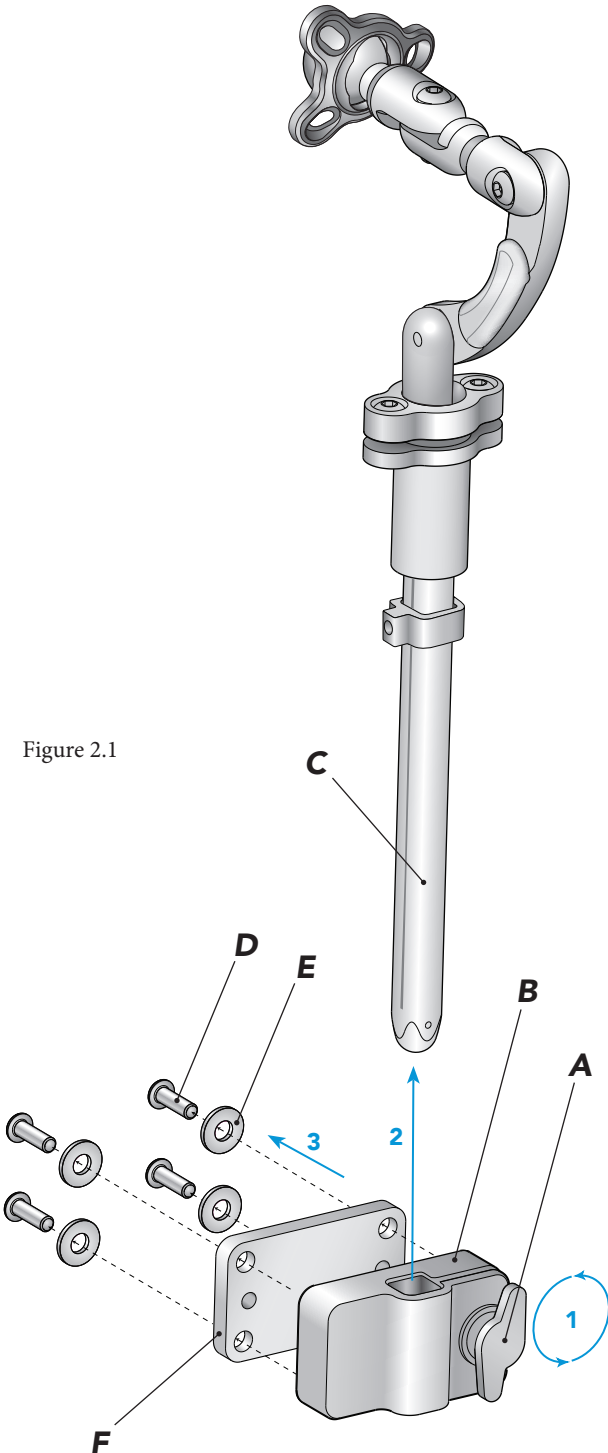


Figure 2.1

- 1 Start by turning knob **A** counterclockwise.
- 2 Remove hardware shaft **C** from mounting bracket **B** and set aside.
- 3 Loosen bolts **D** with $\frac{1}{8}$ " allen wrench and remove along with washers **E** and spacer plate **F** from mounting bracket **B**.
- 4 Remove back support cover (not pictured) allowing access from both sides to head support holes on back support shell **G**.
- 5 Align mounting bracket **B** and spacer plate **F** with head support holes on the back support shell. When using Compass® Power Mount Hardware, do not use spacer plate **F** so either discard or retain for future use.
- 6 Attach **B** and **F** with bolts **D** and washers **E** from the front face of the back support shell **G** and tighten to 65 lb-in.
- 7 Replace and secure back support cover.
- 8 Insert hardware shaft **C** into mounting bracket **B** and turn knob **A** clockwise to secure. Note: Make sure at least $\frac{1}{2}$ " of shaft **C** is completely through the bottom of **B** at all times (see page 7, figure 2.5). See pages 15-17 for final adjustments.

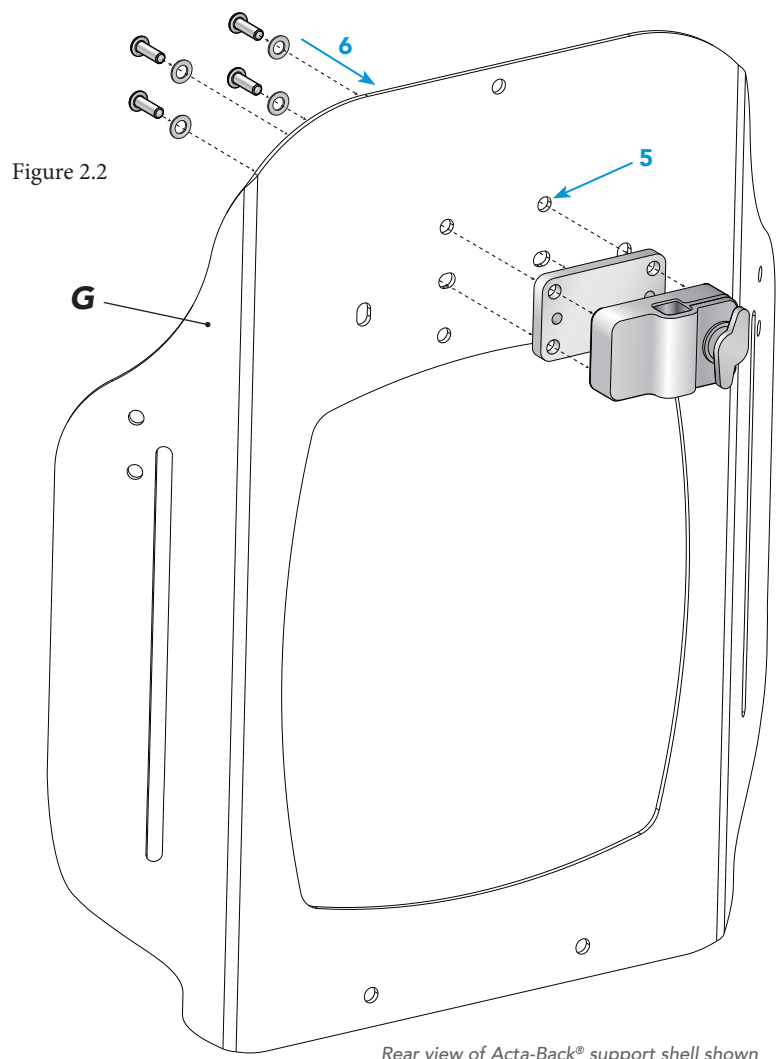


Figure 2.2

Rear view of Acta-Back® support shell shown

INSTALLATION (ACTA-RELIEF™)

For Acta-Relief™ & Acta-Relief™ LTS using Compass® 4 Mounting Hardware. All tools needed are provided.

If Acta-Relief™ Head Support Bracket is not already attached, please follow the below prior to step 1.

Align 4 holes on back support shell **G** with head support bracket **H** as shown in Figure 2.3 and attach with fasteners and allen wrench provided.

Assembly order:

H - G - flat washer **J** - safety washer **K** - screw **L**

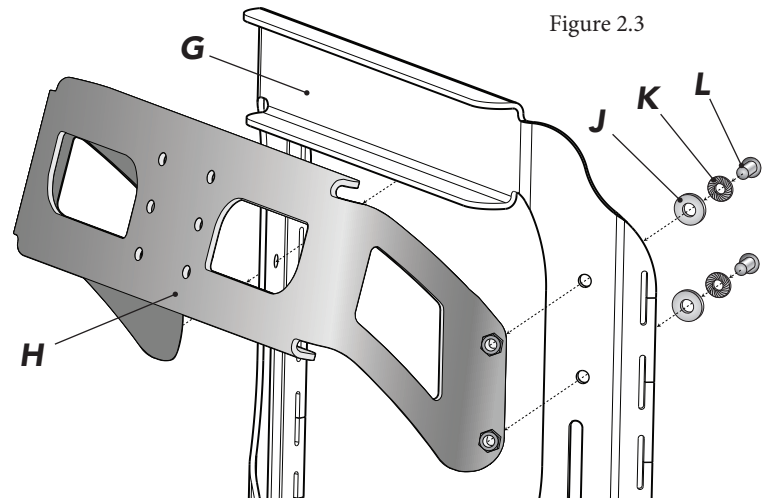


Figure 2.3

Note: Please refer to Page 6, Figure 2.1 for steps 1 - 3.

- 1 Start by turning knob **A** counterclockwise.
- 2 Remove hardware shaft **C** from mounting bracket **B** and set aside.
- 3 Loosen bolts **D** with $\frac{1}{8}$ " allen wrench provided and remove along with washers **E** and spacer plate **F** from mounting bracket **B**.
- 4 Align mounting bracket **B** and spacer plate **F** (if desired) with desired head support holes on head support bracket **H**. (Figure 2.4)
- 5 Attach **B** and **F** with bolts **D** and washers **E** from the inner face of the head support bracket **H** and tighten to 65 lb-in.
- 6 Insert hardware shaft **C** into mounting bracket **B** and turn knob **A** clockwise to secure. Note: Make sure at least $\frac{1}{2}$ " of shaft **C** is completely through the bottom of **B** at all times (see figure 2.5). See pages 15-17 for final adjustments.

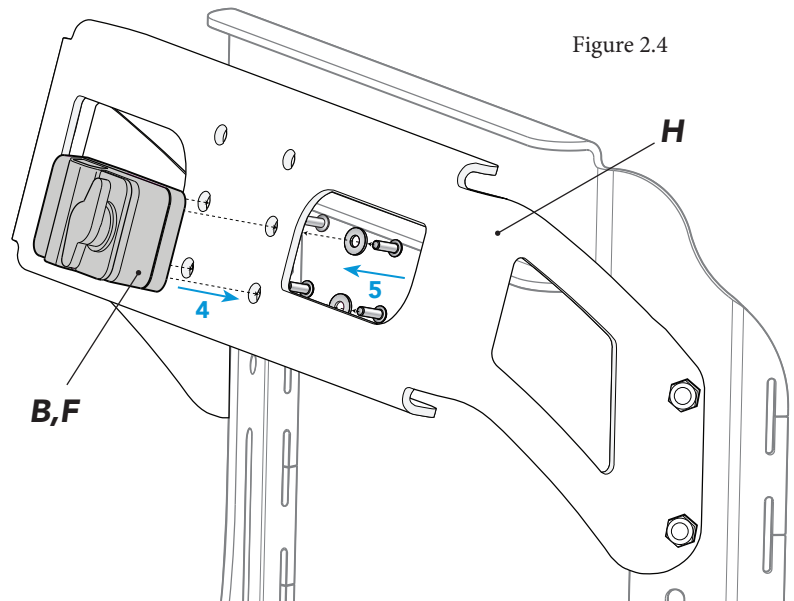


Figure 2.4

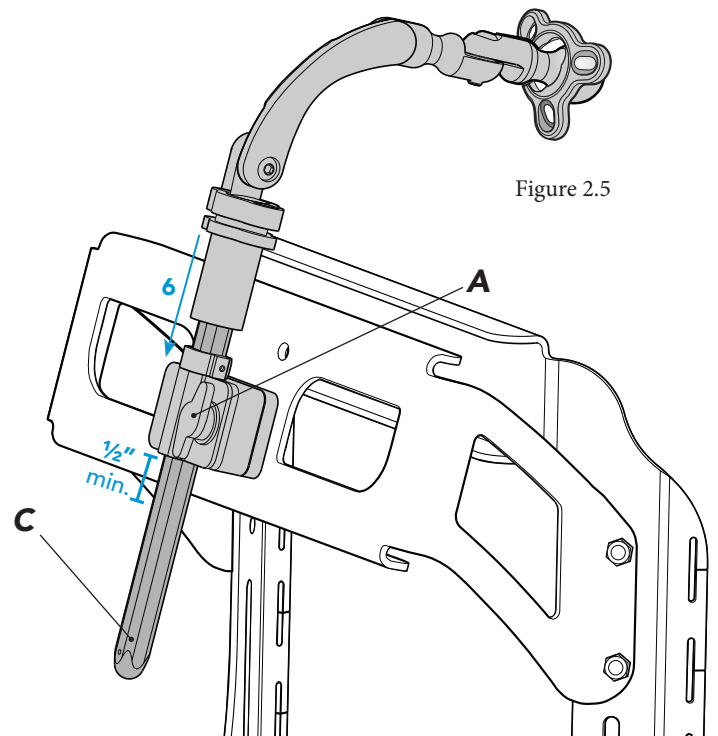


Figure 2.5

Note: Head support pad is not shown but in most cases will come attached to hardware. See page 14 for instructions on attaching head support pad. Instructions for adding a link on pages 12-13.

INSTALLATION (ACTA-RELIEF™ POWER)

For Acta-Relief™ & Acta-Relief™ LTS using Compass® Power Mount Hardware. All tools needed are provided.

Note: Head support pad is not shown but in most cases will come attached to hardware. See page 14 for instructions on attaching head support pad. Instructions for adding a link on pages 12-13.

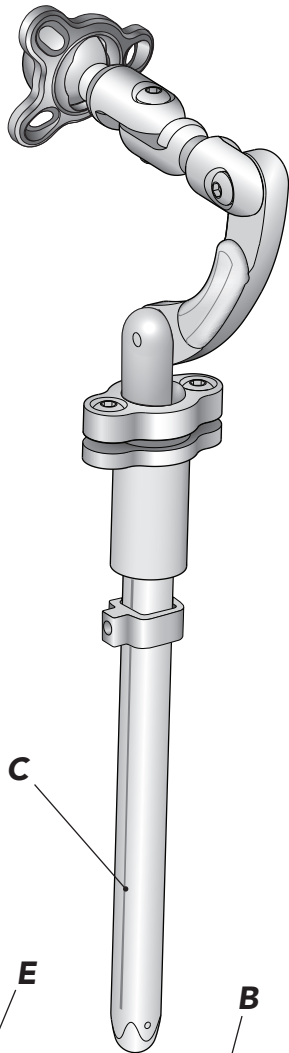
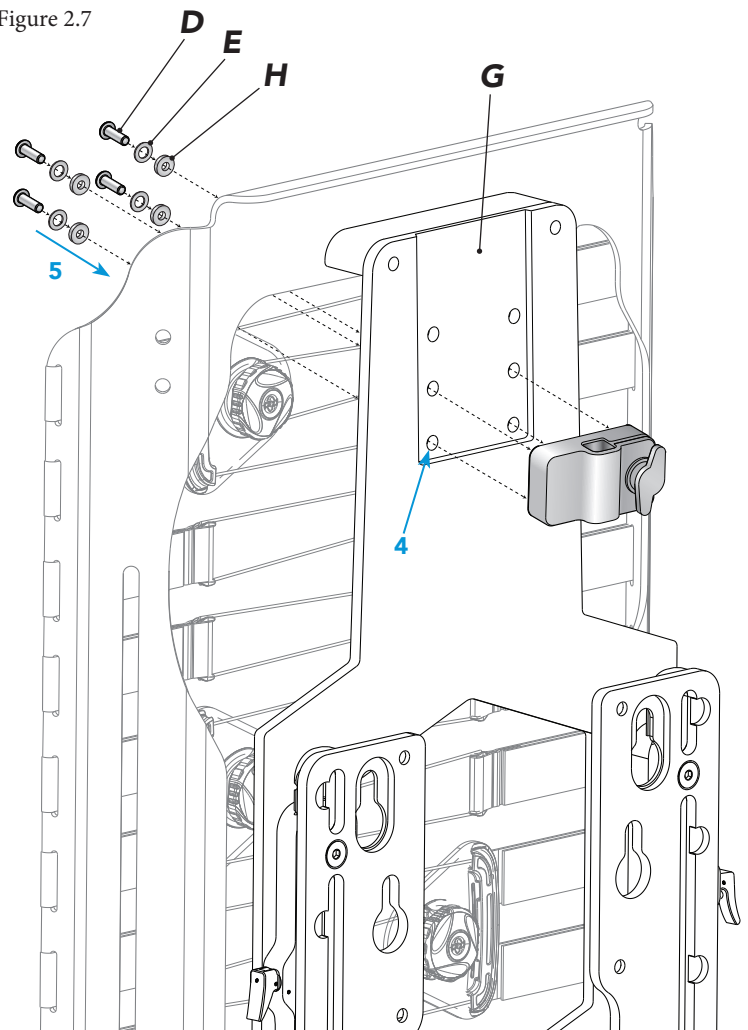


Figure 2.6

- 1 Start by turning knob **A** counterclockwise.
- 2 Remove hardware shaft **C** from mounting bracket **B** and set aside.
- 3 Loosen bolts **D** with $\frac{1}{8}$ " allen wrench and remove along with washers **E** and spacer plate **F** from mounting bracket **B**. Do not use spacer plate **F** with Acta-Relief™ with Compass® Power Mount so either discard or retain for future use.
- 4 Align mounting bracket **B** with desired head support holes on power mount bracket **G**. Note: If needed, partially remove back support cover (not pictured) allowing additional access to head support holes on mounting bracket **G** from the front.
- 5 Attach **B** with bolts **D**, washers **E**, and additional thick washers **H** provided from the inner face of power mount bracket **G** and tighten to 65 lb-in. Replace and secure back support cover if it was removed.
- 6 Insert hardware shaft **C** into mounting bracket **B** and turn knob **A** clockwise to secure. Note: Make sure at least $\frac{1}{2}$ " of shaft **C** is completely through the bottom of **B** at all times (see page 7, figure 2.5). See pages 15-17 for final adjustments.

Figure 2.7



INSTALLATION (RADIUS & POSTERIOR MOUNTING)

For Radius Back® or other Posterior Mount Back Supports using Radius Mounting Plate BL-HSH-SPCR-RAD or Posterior Mounting Plate BL-HSH-SPCR-POST1. All tools needed are provided.

We can only guarantee that BodiLink® Head Support system will properly mount to the Comfort Company products listed in this manual. Modifications made in attempt to interface with any other products voids warranty.

Note: Please refer to Page 8, Figure 2.6 for steps 1 - 3.

Steps 3 - 4 may be complete already depending on how BodiLink™ Head Support was ordered in conjunction with Radius Back®.

- 1 Start by turning knob **A** counterclockwise.
- 2 Remove hardware shaft **C** from mounting bracket **B** and set aside.
- 3 Loosen bolts **D** with $\frac{1}{8}$ " allen wrench provided and remove along with washers **E** and spacer plate **F** from mounting bracket **B**. Parts **D**, **E** and **F** will be replaced so either discard or retain for future use.
- 4 Align mounting bracket **B** and countersunk holes of alternate spacer plate **J** and attach with provided flat head screws **K**. Make sure the screw heads are flush with spacer plate **J** when finished.
- 5 Now attach **J** to back support with button head bolts **L** and safety washers **M** and tighten to 125 lb-in using $\frac{5}{32}$ " allen wrench. **L**, **M** and allen wrench provided with alternate spacer plate.
- 6 Insert hardware shaft **C** into mounting bracket **B** and turn knob **A** clockwise to secure.
Note: Make sure at least $\frac{1}{2}$ " of shaft **C** is completely through the bottom of **B** at all times (see page 7, figure 2.5). See pages 15-17 for final adjustments.

Figure 2.8

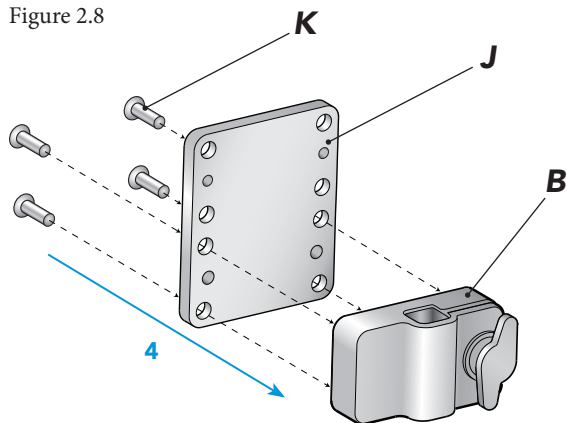
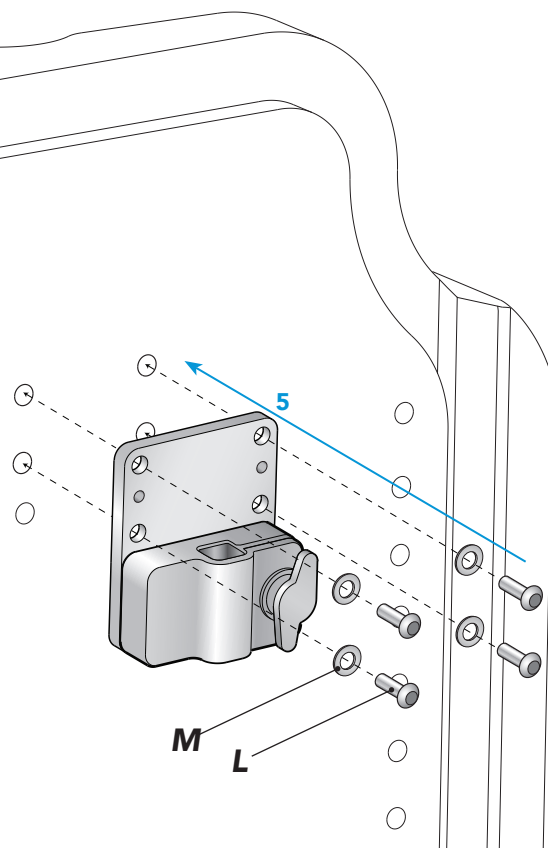


Figure 2.9
Radius Back® without cover shown



Note: Radius Back® requires creating holes in the back support cover at the T-nut locations for attaching mounting hardware.

INSTALLATION (PERMOBIL MOUNTING)

For Permobil® Back Supports with Uni-Track System using Permobil Mounting Plate BL-HSH-SPCR-TRCK1. All tools needed are provided.

We can only guarantee that BodiLink® Head Support system will properly mount to the Comfort Company products listed in this manual. Modifications made in attempt to interface with any other products voids warranty.

- 1 Start by turning knob **A** counterclockwise.
- 2 Remove hardware shaft **C** from mounting bracket **B** and set aside.
- 3 Loosen bolts **D** with $\frac{1}{8}$ " allen wrench provided and remove along with washers **E** and spacer plate **F** from mounting bracket **B**. **D**, **E** and **F** will be replaced so either discard or retain for future use.
- 4 Align mounting bracket **B** and countersunk holes of alternate mounting plate **H** and attach with provided flat head screws **J** and tighten. Fasteners and allen wrench are provided with alternate mounting plate.
- 5 Loosely attach button head bolts **K** and safety washers **L** to double nuts **M** through alternate plate **H**.
- 6 Slide nuts **M** into Uni-Track System slots to desired position and fully tighten bolts **K** with 4mm allen wrench to secure.
- 7 Insert hardware shaft **C** into mounting bracket **B** and turn knob **A** clockwise to secure. Note: Make sure at least $\frac{1}{2}$ " of shaft **C** is completely through the bottom of **B** at all times (see page 7, figure 2.5). See pages 15-17 for final adjustments.

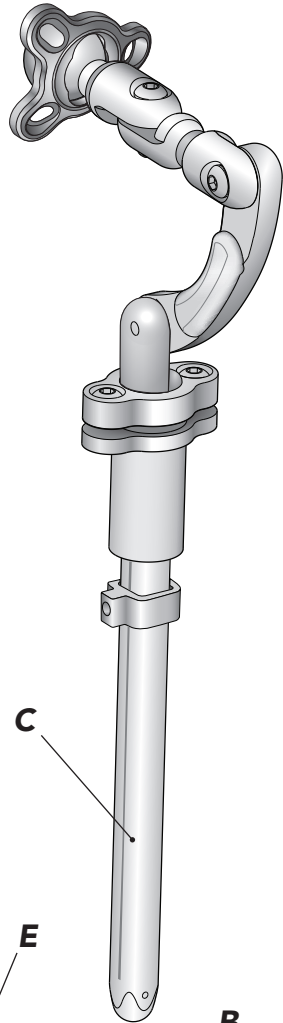


Figure 2.10

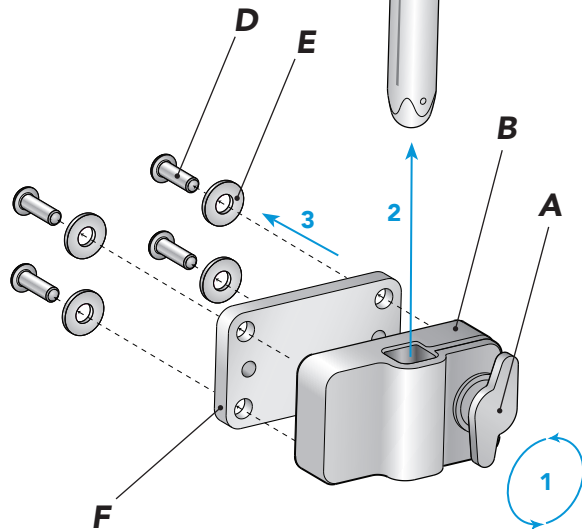


Figure 2.11

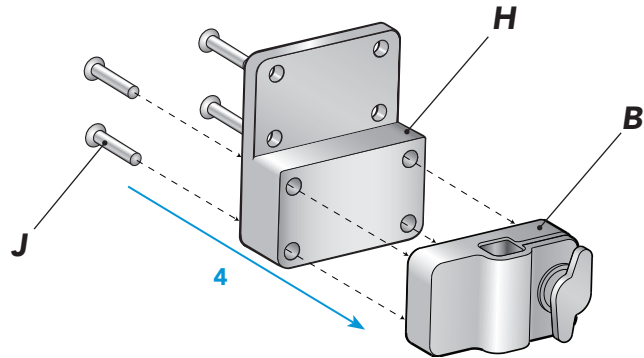
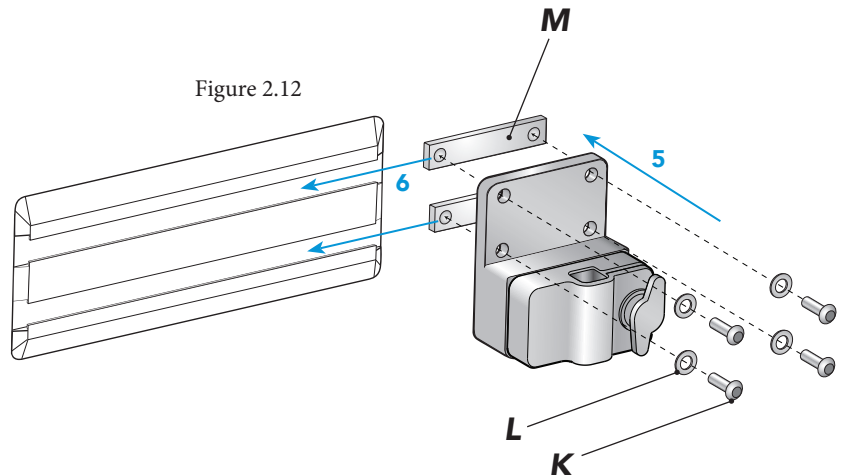


Figure 2.12



INSTALLATION (QUANTUM MOUNTING)

For Quantum® Rehab TRU-Comfort² Back Supports on TRU-Balance³ Seating System using Quantum Mounting Plate BL-HSH-SPCR-POST2.

Note: Please refer to Page 10, Figure 2.10 for steps **1 - 3**.

Steps **3 - 4** may be complete already depending on how BodiLink® Head Support was ordered. If so, skip to step **5**.

- 1 Start by turning knob **A** counterclockwise.
- 2 Remove hardware shaft **C** from mounting bracket **B** and set aside.
- 3 Loosen bolts **D** with $\frac{1}{8}$ " allen wrench provided and remove along with washers **E** and spacer plate **F** from mounting bracket **B**. Parts **D**, **E** and **F** will be replaced so either discard or retain for future use.
- 4 Align mounting bracket **B** and countersunk holes of mounting plate **J** and attach with provided flat head screws **K** using phillips head screwdriver. Make sure the screw heads are flush with mounting plate **J** when finished.
- 5 Attach **J** to back support with socket head bolts **L** and tighten using 4mm allen wrench. **L** provided with alternate mounting plate.
- 6 Insert hardware shaft **C** into mounting bracket **B** and turn knob **A** clockwise to secure.
Note: Make sure at least $\frac{1}{2}$ " of shaft **C** is completely through the bottom of **B** at all times (refer to page 7, figure 2.5). See pages 15-17 for final adjustments.

Figure 2.13

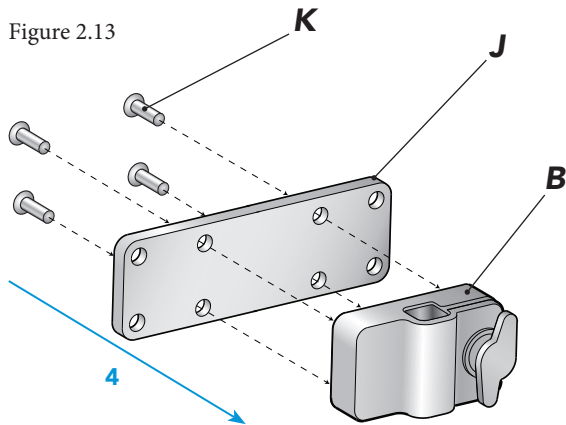
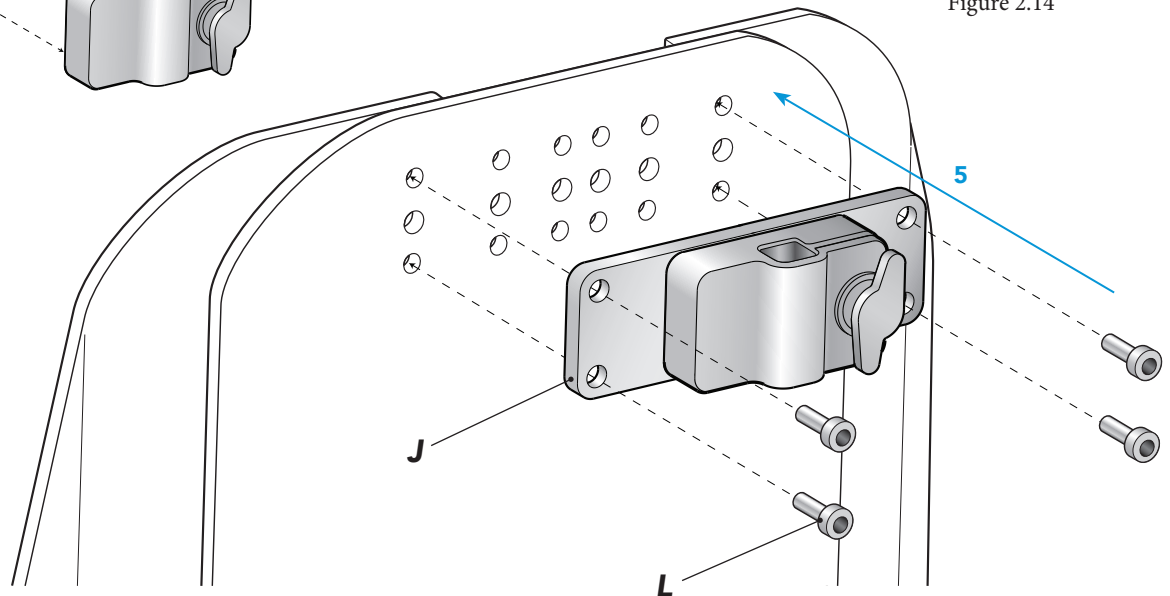


Figure 2.14



INSTALLATION (ADDING A LINK)

BodiLink® Head Support Hardware Kit will include an extra link and fasteners to use if needed to reach extreme positions.



CAUTION! Please consider that adding additional links to the hardware may reduce the overall strength.

- 1 Remove bolt **N** and safety washer **O** from curved link **P** and top of hardware shaft **C**.
- 2 Remove hardware shaft **C** from mounting bracket **B** by turning knob **A** counterclockwise.
- 3 Turn hardware shaft **C** 180° so the visible gear teeth are facing the opposite direction.
- 4 Insert hardware shaft **C** into mounting bracket **B** and turn knob **A** clockwise to secure.

Note: Make sure at least ½" of shaft **C** is completely through the bottom of **B** at all times (refer to page 7, figure 2.5).

Figure 2.15

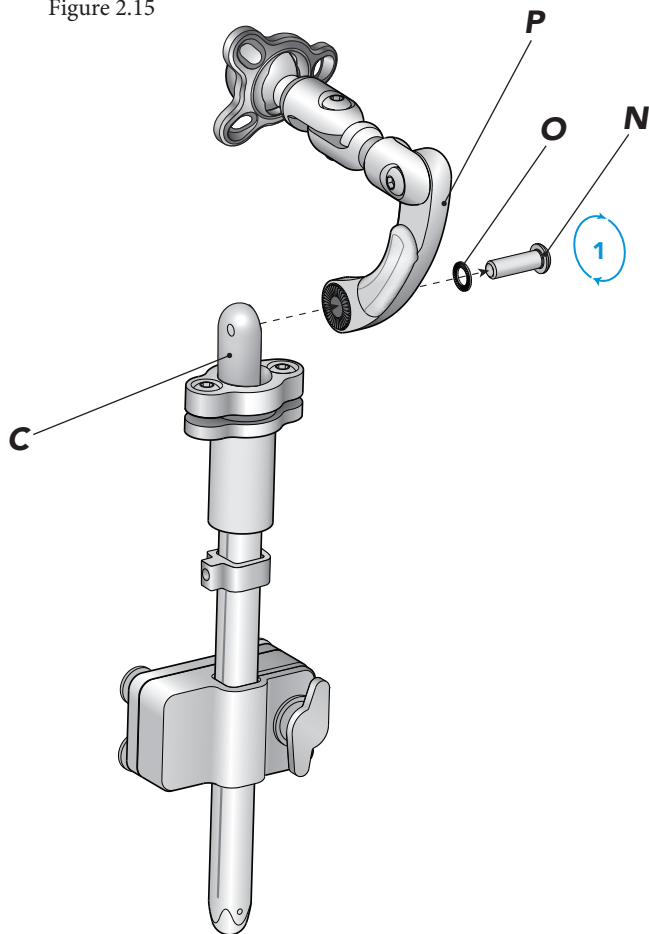
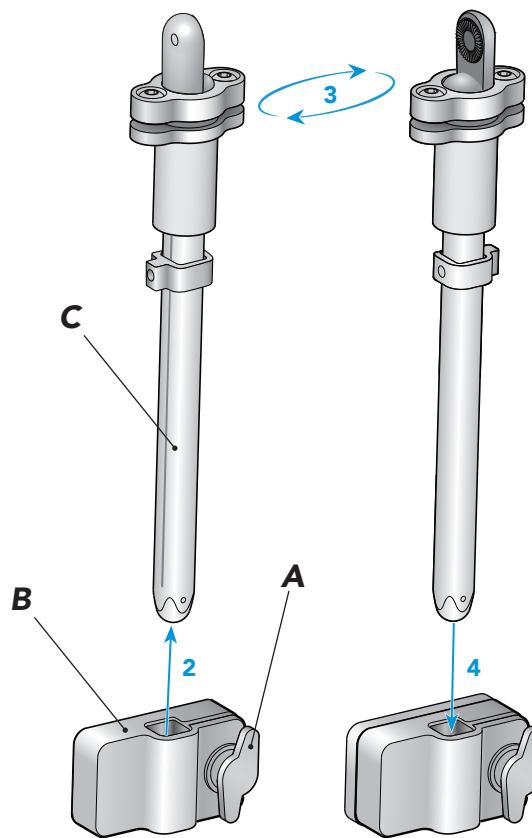


Figure 2.16



Note: Head support pad is not shown but in most cases will come attached to hardware. See page 14 for instructions on attaching head support pad.

INSTALLATION (ADDING A LINK)

Comfort Company cannot be held responsible for damages or injury due to misuse of the product or failure to follow instructions provided in the manual. Please contact us if you require further assistance in understanding cautions, warnings or instructions for using or maintaining your product. Customer Support 1.800.564.9248

- 5 Align extra link **R** with gear teeth on hardware shaft **C** in the orientation shown below and fasten with safety washer **S** and bolt **T**.
 - 6 Align the other end of extra link **R** with curved link **P** and fasten with safety washer **O** and bolt **N**.
 - 7 See pages 15-17 for information on final adjustments.
- ! Proper gear tooth alignment and engagement is essential for a secure set up

Figure 2.17

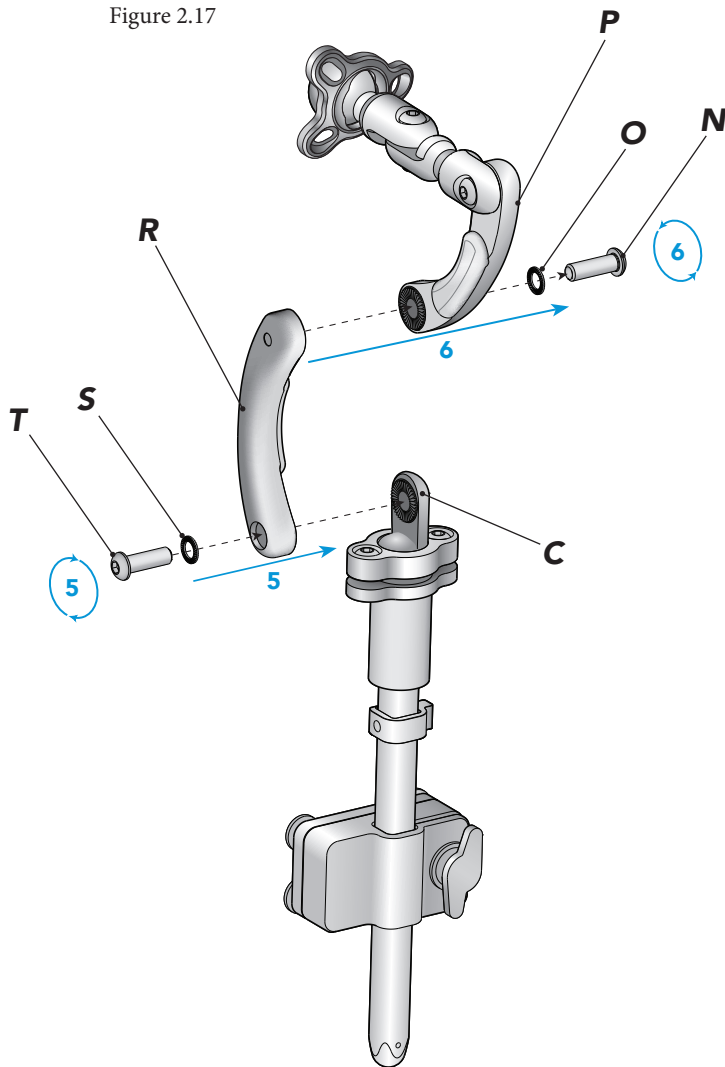
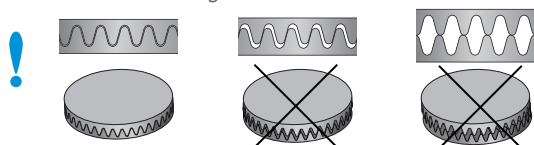


Figure 2.18
Gear Teeth Alignment



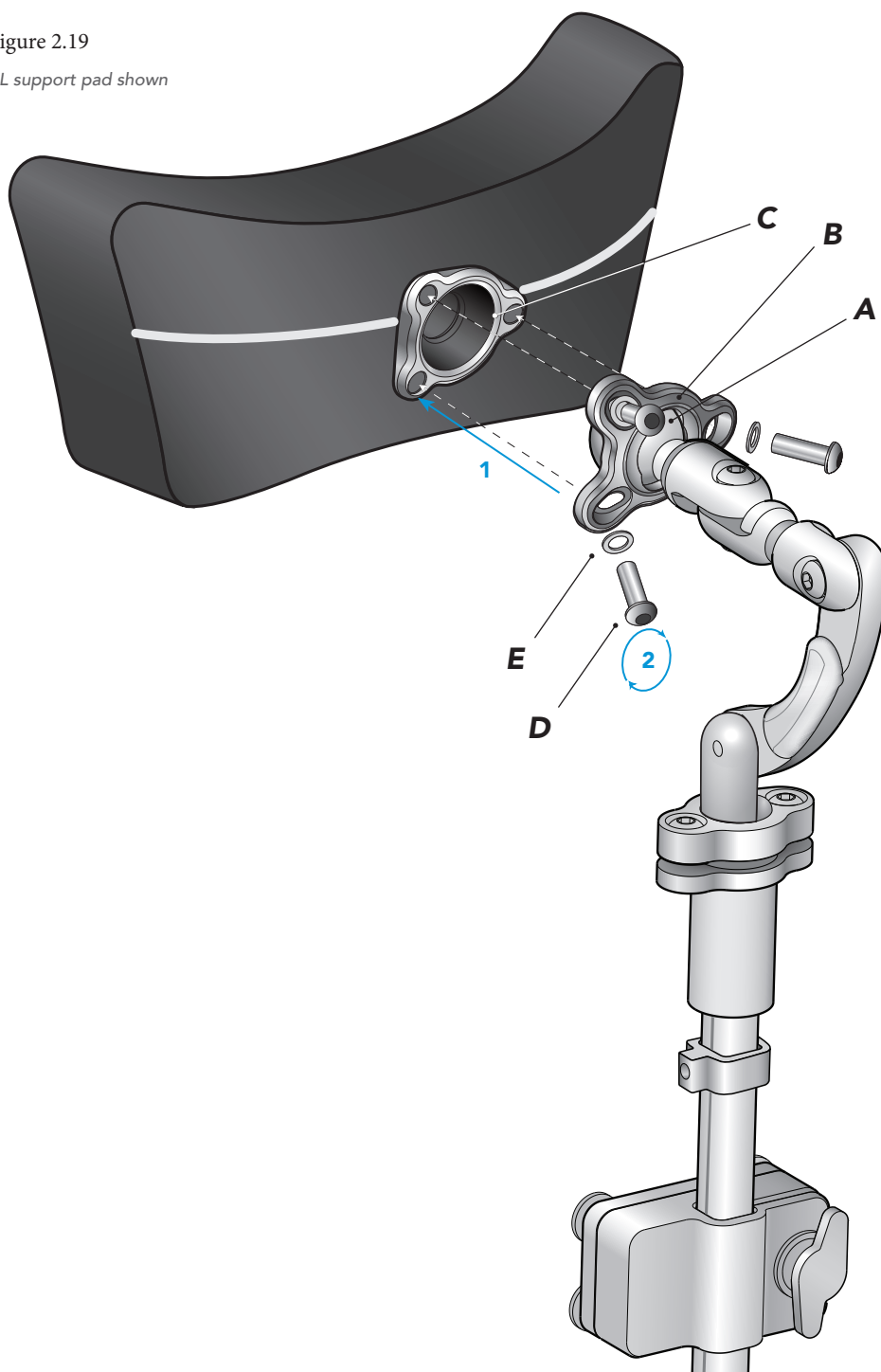
INSTALLATION (SUPPORT PAD)

In most cases, head support pad will come preassembled with mounting hardware. All tools needed are provided.

- 1 Align ball link **A** and ring **B** with ball receiver **C**.
- 2 Loosely engage bolts **D** and safety washers **E** with ball receiver **C** to complete the assembly.
- 3 Continue to pages 15-17 for final adjustments.

Figure 2.19

8W x 4L support pad shown



SET UP & ADJUSTMENTS

BodiLink™ Head Support hardware has 6 points of adjustment for height, angle, rotation and depth. All BodiLink™ Head Support pads have a preformed curvature for optimal posterior contact, but the 3 largest head support pads have 2 points of adjustment for additional lateral support.

Adjustment Point Ranges

- 1A- 45°
- 1B- 80°
- 1C- 360°
- 2- 240°
- 3- 240°
- 4- 240°
- 5- 360°
- 6- 4.5"
- 7- +90°/-10° each

**14W5L, 10W5L, 18W5L Support Pads Only*

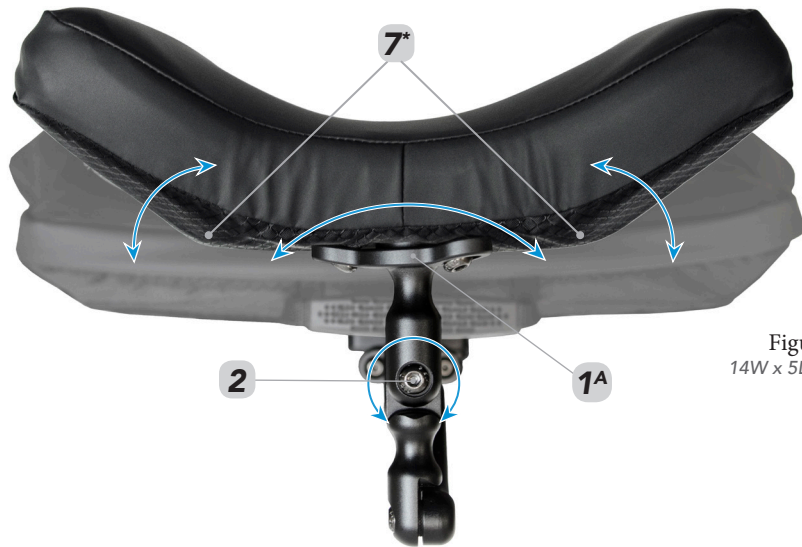


Figure 3.1
14W x 5L pad shown

Figure 3.2



Figure 3.3



SET UP & ADJUSTMENTS

Use the 4mm allen wrench provided for all adjustment bolts.

- 1 Loosen all adjustment point bolts **1-5** allowing for full articulation of the head support to a desired position.

Note: BodiLink™ head support pads are designed to be used in any orientation including flipped 180° as shown in figure 3.4 to better address the user's needs.

- 2 Assess and alter height adjustment **6** using knob **A** if needed. Remember to leave at least ½" of hardware shaft **C** showing through the bottom of the mounting bracket **B**.
- 3 While holding the head support pad in place, loosely tighten adjustment points **1-5**.
- 4 Once all hardware links are lightly set, go back and tighten all bolts evenly.

ATTENTION: It is crucial that adjustment point **1** is tightened evenly all around to prevent unwanted movement and the gear teeth on points **2-5** must be properly aligned and engaged for a secure set up.

- 5 To access wing adjustment **7** channels on 10"/14"/18"W head support pads, partially unzip the locking zippers under the cover flaps. Ensure gear teeth are properly aligned before final tightening.

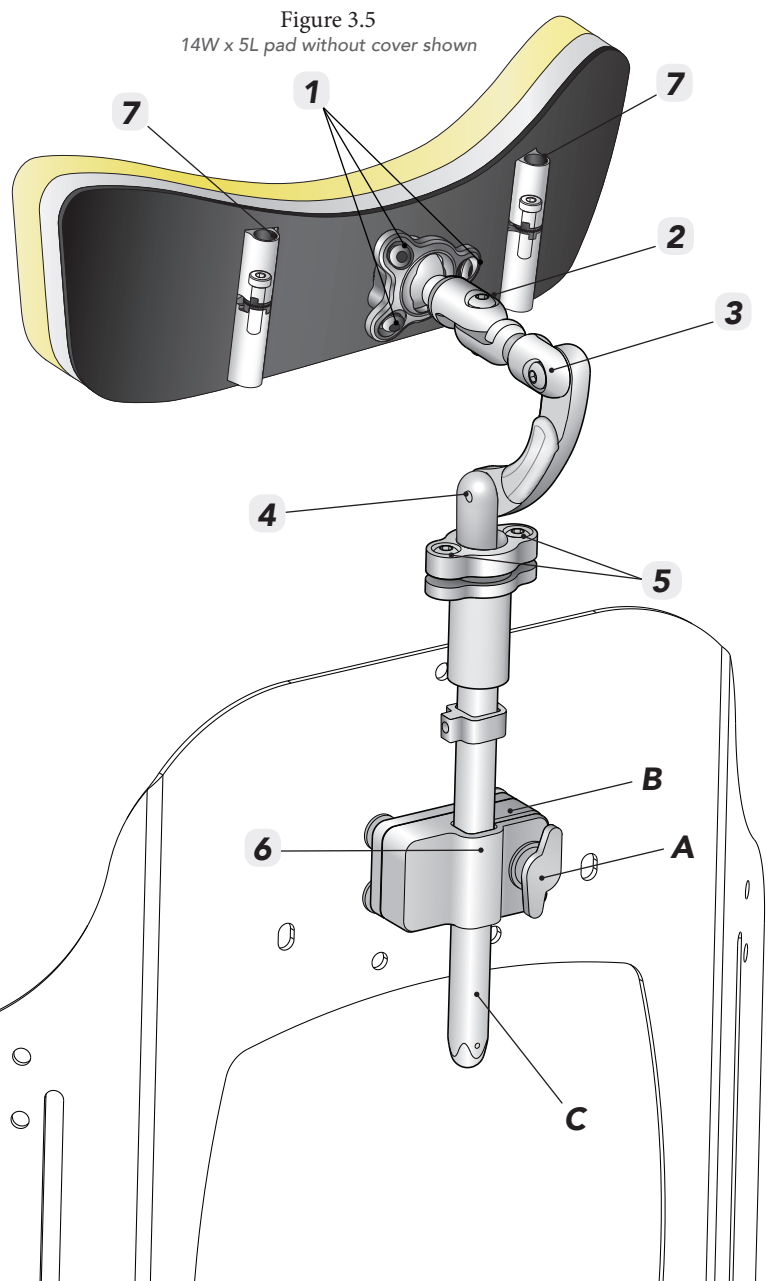
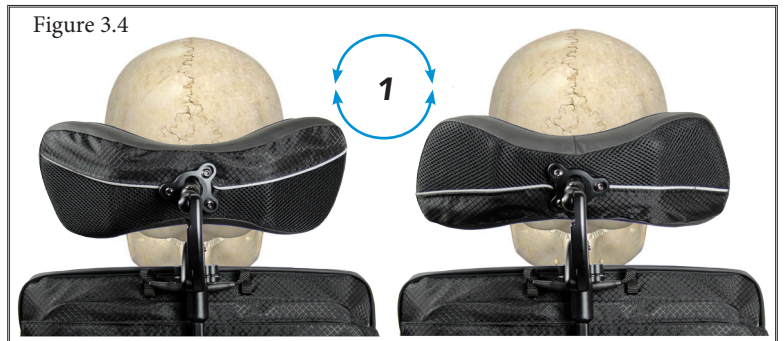
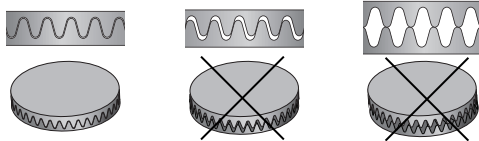


Figure 3.6
Gear Teeth Alignment



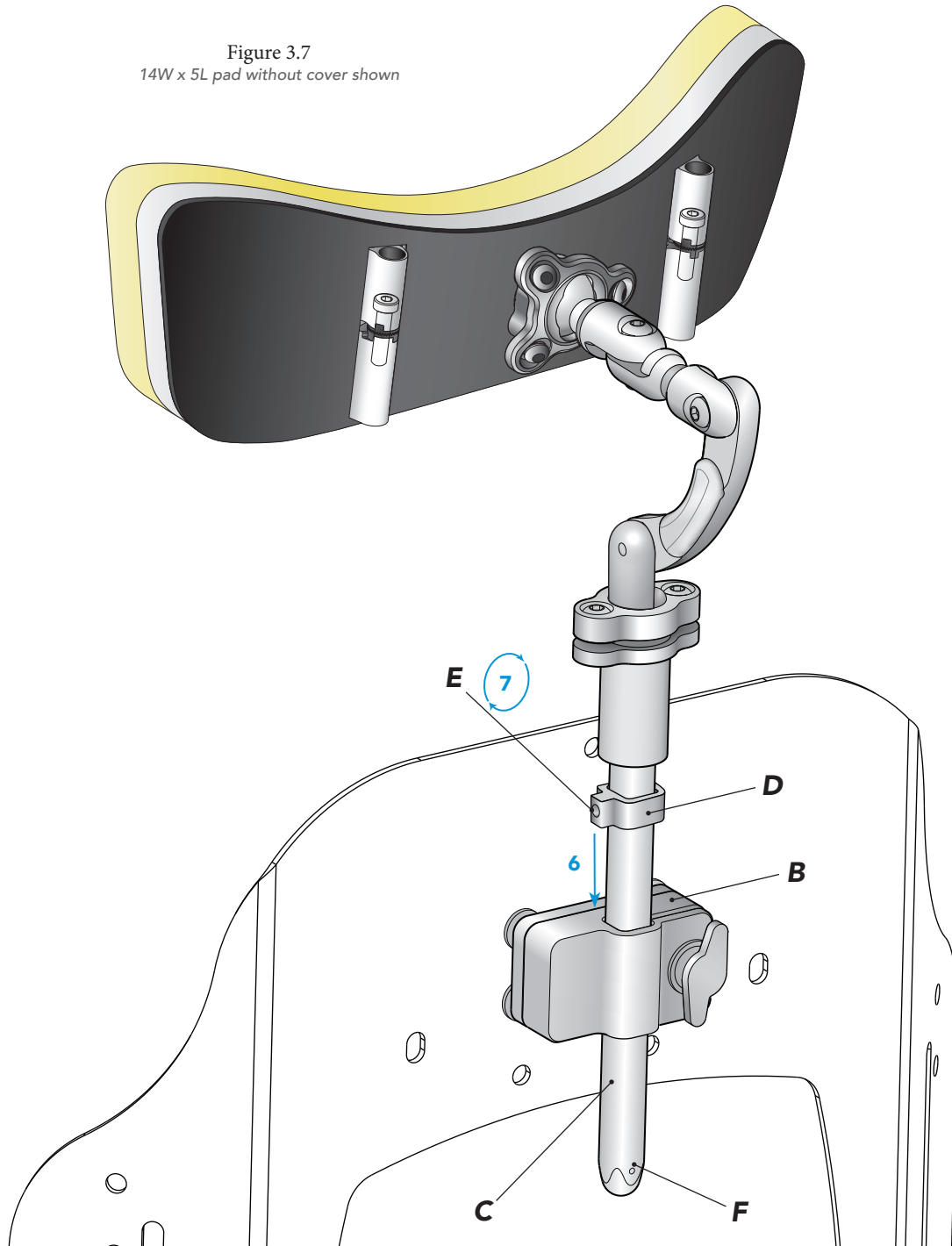
FINISH

Only locking feature set screws require the smaller allen wrenches provided.

- 6 Finish by positioning collar **D** on hardware shaft **C** at the top of mounting bracket **B**.
- 7 Locate set screw **E** in the collar and tighten with 2mm allen wrench until contact is made with the hardware shaft. This allows for easy positioning of the hardware if it is removed and then replaced.

Note: Collar **D** is retained in a track in the shaft. If the collar needs to be removed, remove the set screw **F** located in the track at the bottom of the shaft with the 1.5mm allen wrench provided.

Figure 3.7
14W x 5L pad without cover shown



Frequent heat drying and bleaching naturally cause fabric break down.

Air drying and cleaning without bleach are recommended whenever possible to help extend the life of the cover.

SURFACE CLEANING COMFORT-TEK FABRIC ONLY*



Spray with common household or commercial antibacterial cleansers or disinfectants.



Wipe with damp, water-only cloth after disinfecting and let dry before use.

COMPLETE CLEANING (ALL FABRICS)

Unzip cover and remove from head support pad and hardware.
Machine wash cover using any common laundry detergents. Let dry completely before use.



Machine Wash any temperature
Maximum 66°C/150°F



Hand Wash when possible



Tumble Dry Low Temperature Only



Air Dry when possible



Do Not Steam Clean or Autoclave
Do Not Tumble Dry High Temperature



Do Not Iron



Do not wash or dry Stretch-Air™ and GlideWear® covers along with hook and loop fasteners or other materials that could snag the fabric.
Note: Doing so could pull at the fabrics causing changes in the appearance but not the effectiveness of the fabrics.

DISINFECTING (ALL FABRICS)

Unzip cover and remove from head support pad and hardware. Wash cover with water and bleach followed by thorough rinse.
Follow directions on bleach container. Let dry completely before use.



Machine Wash Maximum 66°C/150°F



Bleach

FOAM

Soiled foams should be replaced. Remove cover, dab foam with water-only cloth and let dry completely before replacing cover.



DO NOT submerge foam in any liquid, including water.



Dab with clean, damp, water-only cloth.



DO NOT use contaminated foam with multiple users.



Air Dry Only.

Foam should not be exposed to light for any extended period of time. Light will cause discoloration of the foam. This only effects the appearance of the foam, not the functional features. There is no need to attempt to "clean" discoloration caused by light exposure.

MAINTENANCE

INSPECTION

Inspect all head support components monthly.

Check and tighten all fasteners and adjustment points.

Inspect all materials for wear such as stretching, fraying, fractures, and bends. Some wear with regular use is expected. Signs of excessive wear to any component should be addressed by contacting your dealer or customer service for repair or replacement parts.

REUSE

You must re-fit the support to the new user or after extended periods of non-use by the same user. Follow the "Set up & Adjustments" procedure on Pages 15-17 to do so.

Before transferring to a new user, the product must be completely cleaned and disinfected as outlined on page 18.

STORAGE

Assembly or individual parts should not be stored in extreme hot or cold temperatures. Only store in a clean and dry place at room temperature.

Do not allow exposure to direct sunlight for prolonged periods of time. This could age the product more rapidly and decrease its effectiveness.

Do not store where there is risk of open flame or spark.

DISPOSAL

Please contact your local authorities for regulations on the proper disposal of your product and its components.



DO NOT incinerate as a means of disposal.

WARRANTY

This product is covered by the *Comfort Company Lifetime Guarantee*.



If a manufacturing defect should occur, the product will be replaced at no cost to the buyer. Register your product at www.comfortcompany.com/registration to activate Lifetime Guarantee.

If manufacturing defects should occur, discontinue use immediately.

Wear from regular use is not considered a manufacturing defect. Replacement parts are available by contacting Customer Service or your supplier, distributor, or retailer.

Any alterations made to the product or defects caused by irregular use voids the warranty. We can only guarantee that BodiLink® Head Support system will properly mount to the *Comfort Company* products listed in this manual. Modifications in attempt to interface with any other products voids warranty.

WARRANTY REPLACEMENT PROCEDURE

Warranty claims should be filed by the original purchaser. End-users will need to contact the DME Supplier, Distributor or Retailer from whom the product was purchased. In the event the original dealer is not available, any authorized *Comfort Company* DME supplier, distributor or retailer will provide assistance.

DME suppliers, distributors or retailers with warranty issues will need to contact Customer Service by phone or email and provide original purchase order number, sales order number, or invoice number whenever possible. A Return Merchandise Authorization (RMA) will be issued by Customer Service so a warranty replacement order or quote can be processed.

COMMENTS

If you would like to contact us with your comments or concerns, please visit our website www.comfortcompany.com or refer to the "Contact Information" section of this manual.

We invite you to leave testimonials of the product on our website on the individual product pages.

© 2017 Comfort Company

Comfort Company®, Compass®, Acta-Back®, Acta-Embrace®, and Radius Back® are registered trademarks of Comfort Company. Bodilink™, Acta-Relief™, Comfort-Tek™, and Stretch-Air™ are trademarks of Comfort Company. GlideWear® is a registered trademark of Tamarack Habilitation Technologies, Inc. Viscool® is a registered trademark of American Excelsior Company. Permobil® is a registered trademark of Permobil AB. Quantum® is a registered trademark of Pride Mobility Products Corporation.

CAL TB 117-2013



www.comfortcompany.com



Stay connected to related news and updates through these resources.
www.comfortcompany.com/stay_connected