

Tri-Lock™ Midline Mounting System

Increase independence and function by bringing driving controls and other electronics closer to the user's zone of control with the Tri-Lock Midline Joystick Mounting System. Navigate power chairs with smooth precision while improving posture, core strength and endurance through a more natural, functional driving position.

Mounting Clamp

Height-adjustable clamp attaches Tri-Lock system to chair. Rail Mount (shown) and Tube Mount styles available.



Tri-Lock Rotating Shaft

Holds Midline Arm, allowing it to rotate smoothly between three locking positions. Hidden flip switch toggles between independent and caregiver-assisted operation. Compact, high-strength design reduces wiggle.

Midline Arm

Available in three shapes to meet different user needs. L-Shaped Arm (pictured) allows height adjustment and fore-aft rotation. Scratch and corrosion-resistant stainless steel supports up to 13.6 kg (30 lbs) and can be cut to fit.

Mounting Adapters

Mount almost any joystick controller to the Midline Arm with choice of models. (PC046 for MK5, MPJ, & Q-Logic controllers shown.)

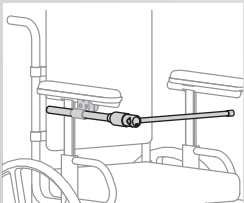


Mount the Tri-Lock Rotating Shaft horizontally to place hand-controlled joysticks in front of the body at midline or anywhere along the shaft to meet individual needs.

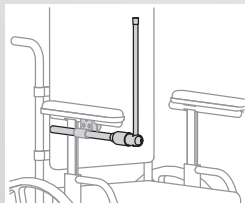


Mount the Tri-Lock vertically to put the Midline Arm over the shoulder for chin and mouth-controlled systems.

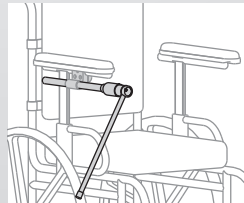
Tri-Lock Rotating Shaft Positions



Horizontal driving position (0°)



Rotated 90° for transfers



Rotated 240° for table access

Additional Midline Arm Shapes



J-Shaped Arm

Accommodates trays









Straight Arm

For less complex needs

Midline Joystick Mounting Kits

Kits contain: One Tri-Lock™ Rotating Shaft, plus choice of Midline Arm, Mounting Clamp, and Joystick Mounting Adapter.

| Midline Arm Style | Armrest Mounting Clamp | Joystick Mounting Adapter | | | |
|---|------------------------|---|---|---|---|
| | | PC042 | PC045 | PC046 | PC047 |
| J-Shaped  | Rail Mount |  |  |  |  |
| | Tube Mount | PC202-10J | PC205-10J | PC206-10J | PC207-10J |
| L-Shaped  | Rail Mount | PC202-11J | PC205-11J | PC206-11J | PC207-11J |
| | Tube Mount | PC202-10L | PC205-10L | PC206-10L | PC207-10L |
| Straight  | Rail Mount | PC202-11L | PC205-11L | PC206-11L | PC207-11L |
| | Tube Mount | PC202-10S | PC205-10S | PC206-10S | PC207-10S |
| | Tube Mount | PC202-11S | PC205-11S | PC206-11S | PC207-11S |

Note: The part numbers listed above are for complete kits. Products are also available as individual components. See our website, product guide, or price list for details.

Mounting Clamp

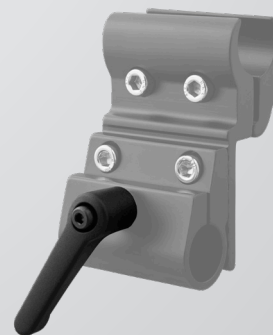
The Tri-Lock™ Modular Mounting Clamp is an essential component for mounting the Tri-Lock™ Rotating Shaft to the power chair. Both styles are height adjustable and can be installed on either the left or right armrest.



PC010 Rail Mount
Fits Permobil Unitrack and Pride T-slotted armrests



PC011 Tube Mount
Fits Invacare Ø22 mm, 7/8" round-tube armrests



Optional Quick-Release Lever

The optional Quick-Release Lever attaches to the Mounting Clamp to allow easy adjustment and removal of the Tri-Lock™ Rotating Shaft.

FA171 Quick-Release Lever
For easy adjustment and removal of the Tri-Lock™ Rotating Shaft