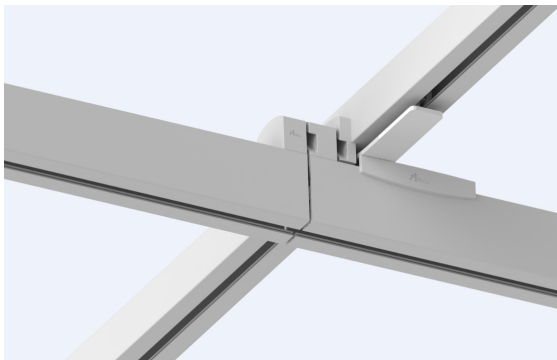
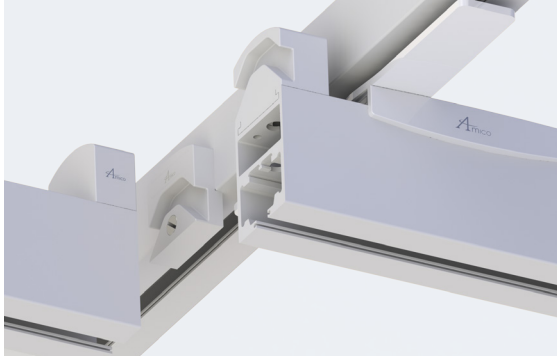


Transition Gate Specifications



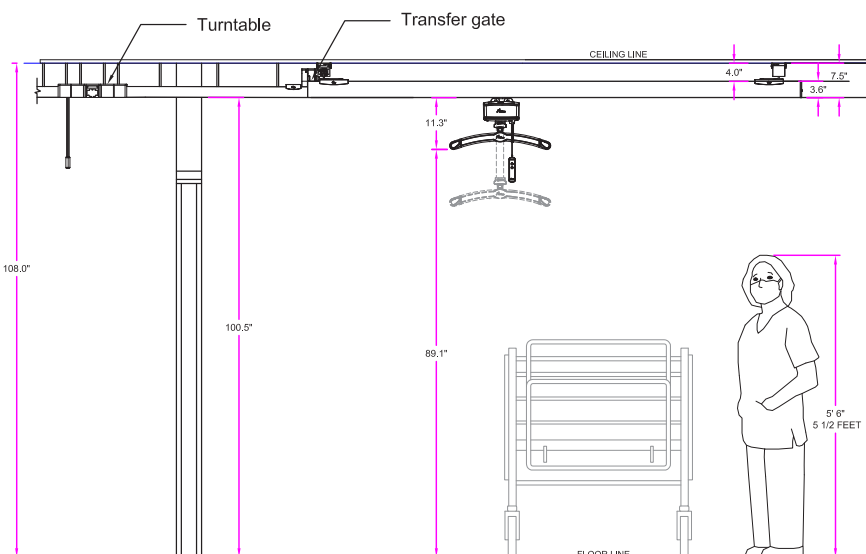
General Specifications:

The transition gate is an H system gate that permits a GoLift to travel between a H-system travelling track and a fixed track in an easy and safe manner. A low maintenance, mechanical device, the transition gate features a double failsafe action to ensure that the gate will only open when the two tracks are properly aligned and locked together.

Features:

- Compatible with all 3 types of tracks
- Passive system requiring no electrical power to engage and disengage.

Typical Amico Transition Gate Installation



Sample Elevation Detail

