



Our Toileting Slings feature a wide, divided leg partition that enables fast and simple application for dressing and undressing during toileting or bathing. They are suitable for patients with poor trunk stability and feature padding under the arms for extra comfort and are available with extra head support or without.

### Three Options

These Toileting slings are available in two low back models and one high back model with adjustable neck support for increased head stability. The wide partition of the leg parts makes the sling application fast and simple and enables dressing and undressing during toileting or bathing. All models can be used with or without an optional waist belt that is available in an assortment of sizes with a Velcro or buckle closure.

### Optimal Positioning

The low back models feature an upright seated position that makes transferring to and from a toilet much easier. The high back model features a reclined (backward tilted)

position that prevents the user from sliding out of the sling and is especially beneficial for those hypertonic users that have a tendency to overstress themselves (spastic performance) or those hypotonic users with lesser body control, dizziness or users with extended time spent in bed.

### Easy Care and Easy Fit

Our slings are manufactured to the highest quality standards. They feature reinforced straps and high strength nylon webbing around the sling to make them strong enough to resist even the most active use. Each sling label is colour coded to ensure quick and easy selection of the correct sling and the straps are colour coded for easy determination of required positioning.

## Accessories



### Extension Loops

Used to extend lift straps in order to alter lifting position or to hold leg parts together. Assorted lengths. Part no. 21180.\*



### Waist Belts

Velcro or buckle enclosure. Available in Junior and Adult sizing. Velcro Part no. 25145-\*\* Buckle Part no. 25146-\*\*\*



### Upholstered Cover

Protects user from hanger bar impact. Not for use in a wet environment. Part no. 50866



### Hanger Bars for 2-, 3- or 4-point Suspension

Part no. 57551, 55764 [2- or 3-Point - Quick Release], 55619 [4-Point - Attach to leg hook]

## Lifting Situations



### Use to/from a bed

Suitable for transfers and repositioning to and from a bed. Can be left behind patient for short period of time.



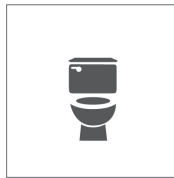
### Use to/from a chair

Suitable for transfers and repositioning to and from a chair. Can be left behind patient for short period of time.



### Use for showering

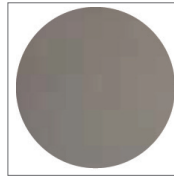
Only Polyester Net fabric can be used for this application.



### Use for toileting

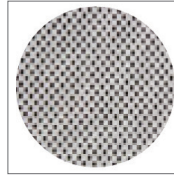
Only Polyester Net fabric can be used for this application.

## Care and Features



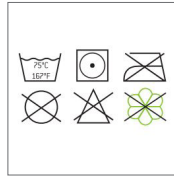
### Polyester

Durable, low-friction, easy to clean, apply and remove.



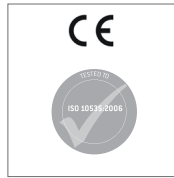
### Polyest Net

Soft, thin material that breathes and dries quickly. Ideal for bathing or showering.



### Care

Care instructions located on sling label. Use a hospital grade laundry bag while laundering.



Tested to all relevant standards, including ISO 10535, hoists for the transfer of disabled persons.

## Technical Specifications

Part Number	Size	Colour	Model #25080/25085			Model #25090			Model #25080/25085	Model #25090
			A	B	C	A	B	C		
<b>Polyester Net</b>	<b>Polyester</b>									
-	25080-JS	Junior Small		28cm / 11"	62cm / 24.4"	22cm / 8.7"	-	-	-	
25085-JM 25090-JM	25080-JM	Junior Medium		28cm / 11"	67cm / 26.3"	26cm / 10.2"	28cm / 11"	73cm / 28.7"	70cm / 27.6"	
25085-S 25090-S	25080-S	Small		32cm / 12.6"	74cm / 29.1"	30cm / 11.8"	32cm / 12.6"	82cm / 32.3"	74cm / 29.1"	
25085-M 25090-M	25080-M	Medium		48cm / 18.9"	90cm / 35.4"	33cm / 13"	48cm / 18.9"	92cm / 36.2"	83cm / 32.7"	
25085-L 25090-L	25080-L	Large		49cm / 19.3"	97cm / 38.2"	33cm / 13"	49cm / 19.3"	99cm / 39"	90cm / 35.4"	
25085-XL 25090-XL	25080-XL	Extra Large		56cm / 22"	100cm / 39.4"	38cm / 15"	56cm / 22"	101cm / 39.8"	100cm / 39.4"	
Maximum User Weight	250kg/551lb									

\* Available in assorted lengths: 10cm/3.9" [21180-10], 15cm/5.9" [21180-15], 20cm/7.8" [21180-20], 25cm/9.8" [21180-25], 35cm/13.7" [21180-35]

\*\* Junior Sizes: 40cm/15.7" [25145-40B], 50cm/19.7" [25145-50B], 60cm/23.6" [25145-60B]; Adult Sizes: 60cm/23.6"/[25145-60], 70cm/27.6" [25145-70], 80cm/31.5" [25145-80], 90cm/35.4" [25145-90], 110cm/43.3" [25145-110], 120cm/47.3" [25145-120]

\*\*\* Junior Sizes: 40cm/15.7" [25146-40B], 50cm/19.7" [25146-50B], 60cm/23.6" [25146-60B]; Adult Sizes: 60cm/23.6"/[25146-60], 70cm/27.6" [25146-70], 80cm/31.5" [25146-80], 90cm/35.4" [25146-90], 100cm/39.4" [25146-100], 110cm/43.3" [25146-110], 120cm/47.3" [25146-120]

This product is manufactured in accordance with all relevant ISO standards.

