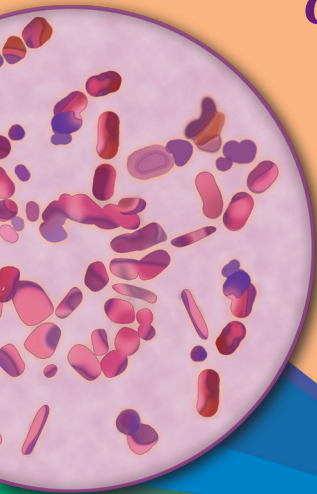


Tempa•DOT™ CLINICAL THERMOMETERS

QUICK START GUIDE – HOW TO USE/READ



*Reduces the Risk
of Infection*



BENEFITS

Temperature-taking devices can be carriers of infectious diseases as they are shared between patients and handled by caretakers. Even with the most stringent cleaning and handling protocols, it is difficult to insure a contaminate-free device for each use.

Tempa•DOT™ solves this problem by providing a sterile, individually wrapped, disposable thermometer. Simply open, use and dispose. In the long history of Tempa•DOT™ there has not been a documentable instance of a patient-induced infection. A reduced infection rate can translate into improved patient outcomes, and lower costs.

- **REDUCES THE RISK OF INFECTION**— Other temperature-taking devices can accumulate, carry, and spread contagions as they are routinely handled. By comparison, Tempa•DOT™ is a sterile instrument, individually wrapped for single use. This virtually eliminates the possibility of contaminate transfer. There is a strong case for the use of Tempa•DOT™ with all patients. The prevention of just one HAI event can pay for the entire Tempa•DOT™ program.
- **ACCURATE**— Oral readings in 1 minute. Accurate to $\pm 0.2^\circ\text{F}/\pm 0.1^\circ\text{C}$ (within the critical range of 98.0°F to $102.0^\circ\text{F}/37.0^\circ\text{C}$ to 39.0°C).
- **SAFE**— Tempa•DOT™ is sterile, latex-free, and non-toxic. Individually wrapped to prevent contamination before use.
- **CONVENIENT**— Units are easily divisible and transportable. Place a 100-count box in each patient's room, or carry individual 4-strips. They fit comfortably in the pocket of your scrubs.
- **ECONOMICAL**— Eliminates time and materials spent to disinfect, recalibrate, recharge, or repair electronic devices. No need to purchase and stock disposable (unsterilized) sheaths, or enter into long term purchasing commitments.

HOW TO STORE

Store Tempa•DOT™ thermometers in an area where temperatures do not exceed $86^\circ\text{F}/30^\circ\text{C}$.

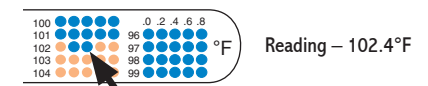
When exposed to high temperatures, matrix dots will turn blue. If this occurs:

1. Place in freezer for 1 hour per box of 100, 16 hours per case of 20 boxes. (2 hours per box for Tempa•DOT™ PLUS rectal thermometers.)
2. Let stand at room temperature for 1 day.
3. Thermometers are now ready for use. Dots may appear slightly off-color, but this does not affect accuracy.

HOW TO OPTIMIZE RESULTS

As with all medical instruments, it is important to closely follow the IFUs:

- Position in mouth correctly.
- Keep mouth closed for the full 60 second period.
- Read the last blue dot after device “locks in” (approx. 10 seconds). Ignore any skipped dots.

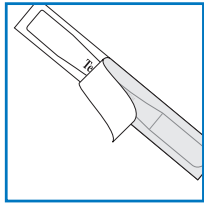


- Retake temperature with new device if left in mouth longer than 2 minutes (oral) or 5 minutes (axillary or rectal).
- Wait at least 15 minutes before taking temperature when patient is exposed to cold weather, smoking, eating, or drinking.
- Do not use after expiration date, which is printed on the 100 count box.
- If the thermometer wrapper has been damaged or opened, the product may no longer be sterile. Please discard.

ORAL USE

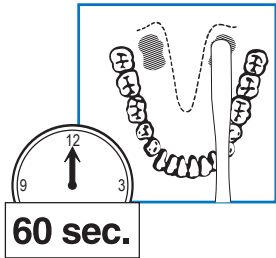
1. OPEN PACKAGE

Fold along perforation and tear off a single Tempa•DOT™ thermometer strip. Peel back top of wrapper to expose handle of thermometer. Remove thermometer by pulling exposed handle, taking care not to touch the dot matrix portion which is to be placed in the patient's mouth.



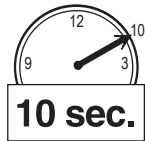
2. INSERT THERMOMETER AND WAIT 60 SECONDS

Place thermometer into patient's mouth under the tongue, as far back as possible into either heat pocket, as you would any oral thermometer (see diagram).



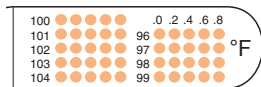
Generally, adult lips should touch the middle of the "Tempa•DOT" logo. The dots can face either up or down. Have patient press tongue down on thermometer while keeping mouth closed.

3. REMOVE THERMOMETER AND WAIT 10 SECONDS

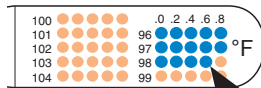


4. READ AND RECORD TEMPERATURE

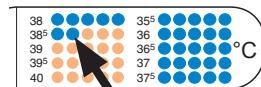
The last blue dot on the matrix indicates the correct temperature (ignore any skipped dots). Retake temperature with new device if left in mouth for longer than 2 minutes.



Unfired – NO Blue



Reading – 98.6°F



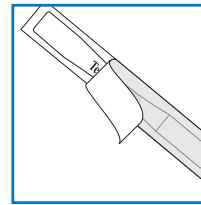
Reading – 38.6°C

5. DISCARD THERMOMETER

AXILLARY USE

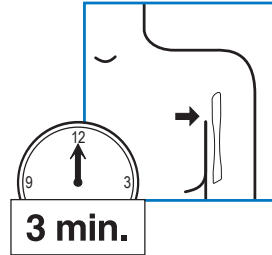
1. OPEN PACKAGE

Fold along perforation and tear off a single Tempa•DOT™ thermometer strip. Peel back top of wrapper to expose handle of thermometer. Remove thermometer by pulling exposed handle.



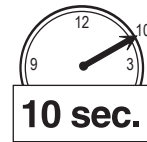
2. INSERT THERMOMETER AND WAIT 3 MINUTES

Place thermometer high in the armpit with the dot matrix side against the torso and parallel to the length of the body. Use the patient's arm to hold thermometer in place.



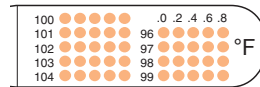
3. REMOVE THERMOMETER AND WAIT 10 SECONDS

Before reading, wait approximately 10 seconds for dots to lock in.

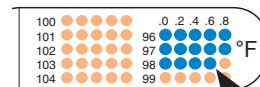


4. READ AND RECORD TEMPERATURE

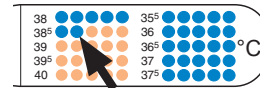
The last blue dot on the matrix indicates the correct temperature (ignore any skipped dots). Retake temperature with new device if left under arm longer than 5 minutes.



Unfired – NO Blue



Reading – 98.6°F



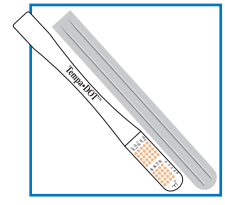
Reading – 38.6°C

5. DISCARD THERMOMETER

RECTAL USE

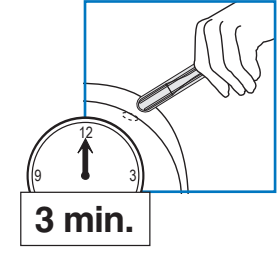
1. PREPARE THERMOMETER

Inspect sheath. Do not use if malformed or damaged. Insert thermometer completely into sheath, dot-end first and with dots visible through the smooth side of sheath.



2. INSERT THERMOMETER AND WAIT 3 MINUTES

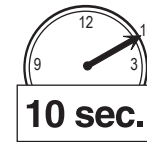
Lubricate sheath exterior and insert thermometer with sheath into rectum until the dots and numbers are completely covered.



CAUTION: Any object inserted into the rectum could cause perforation. DO NOT USE FORCE.

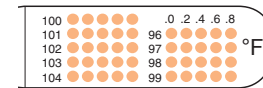
3. REMOVE THERMOMETER AND WAIT 10 SECONDS

Discard sheath. Before reading, wait approximately 10 seconds for dots to lock in.

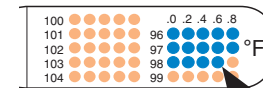


4. READ AND RECORD TEMPERATURE

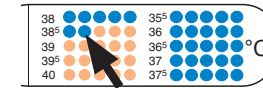
The last blue dot on the matrix indicates the correct temperature (ignore any skipped dots). Retake temperature with new device if left in rectum longer than 5 minutes.



Unfired – NO Blue



Reading – 98.6°F



Reading – 38.6°C

5. DISCARD THERMOMETER

Ordering Information:

Tempa•DOT # 5122 (Fahrenheit Scale)
Tempa•DOT # 5532 (Celsius Scale)

Ordering Information:

Tempa•DOT # 5122 standard (Fahrenheit Scale), or
Tempa•DOT # 5001 with adhesive strip (°F Scale)
Tempa•DOT # 5532 standard (Celsius Scale), or
Tempa•DOT # 5002 with adhesive strip (°C Scale)

Ordering Information:

Tempa•DOT # 5192R (Fahrenheit Scale)
Tempa•DOT # 5502R (Celsius Scale)