

*Your Front-Line Defense for Optimum Fluid Control*



---

## Suction & Waste Fluid Management

---

 DeRoyal®

## SUCTION & WASTE FLUID MANAGEMENT

DeRoyal realizes that healthcare facilities are in need of simple, safe, and cost effective solutions for disposal of medical waste fluid. Thus, DeRoyal has dedicated itself to researching, designing and manufacturing quality waste fluid management products that are more convenient, more economical, more efficient, and provide for improved safety.

### CONTENT

	Page
SUCTION CANISTER SYSTEMS.....	3 – 13
SafeLiner Semi-Rigid Liner System.....	4 – 5
1000 cc, 1500 cc & 3000 cc.....	4
Hardware .....	4
Crystalline Rigid Canister Systems.....	6 – 7
1200 cc.....	6
1500 cc & 2500 cc.....	7
ReliaFlex Flexible Liner Systems.....	8 – 9
1300 cc, 1800 cc & 3200 cc.....	9
Hardware .....	9
Critical Measurement Canister (300 cc).....	10
Omni-Jug (16 liter).....	11
SPECIALTY FLUID CONTROL PRODUCTS/SAFETY ACCESSORY.....	12 – 19
Drain-Jug.....	12
Siphon Pump.....	13
Puddle Guppy.....	14
Safe Cord Floor Strip.....	14
Anti-Fatigue Mats.....	15-17
Absorbent Floor Sheets & Mats.....	18-19
WASTE FLUID DISPOSAL.....	20 – 23
Solidifier.....	20
Aqua-Box .....	22
SUCTION HARDWARE & ACCESSORIES.....	24 – 31
Accessories.....	24
Hardware.....	25 - 31

*Your Front-Line Defense for Optimum Fluid Control*

## DEROYAL SUCTION CANISTER SYSTEMS



**SafeLiner<sup>®</sup>**

Better Suction. Better Filtration.  
Better Assembly. Better Safety.



**Omni-Jug<sup>®</sup>**



**CrystalLine<sup>™</sup>** SUCTION SYSTEM



**ReliaFlex<sup>™</sup>**

# Suction & Fluid Waste Management

## SUCTION CANISTER SYSTEMS

### Safeliner® Semi-Rigid Liner System

- Innovative adhesive seal on lid keeps lid securely in place to help prevent leakage and spills once full
- **Spill-safe** for clinicians
- Self-aligning lid allows for quick and easy lid assembly
- Enhanced flow rates allow for greater suction power in clinical settings
- Innovative filter technology helps prevent backflow of aspirated fluids into hospital vacuum systems
- Canisters are nested for efficient packaging and storage
- Patent pending

	Product Number	Case Quantity	Elbow	Tubing		
				3/16" x 6 ft. Conn.	1/4" x 6 ft. Conn.	1/4" x 10 ft. Conn.
1000 cc	71-6510	100	1			
	71-6516	72	1	1		
	71-6517	72	1		1	
1500 cc	71-6515	100	1			
	71-6526	72	1	1		
	71-6527	72	1		1	
	71-6529	72	1			1
3000 cc	71-6530	50	1			
	71-6539	36	1			1



### Safeliner® Hardware

Product #	Description	Quantity
71-1000BR	Semi-Rigid Outer Shell, 1000 cc w/Bracket	1/Cs
71-1000DS	Semi-Rigid Outer Shell, 1000 cc w/DISS Assembly	1/Cs
71-1500BR	Semi-Rigid Outer Shell, 1500 cc w/Bracket	1/Cs
71-1500DS	Semi-Rigid Outer Shell, 1500 cc w/DISS Assembly	1/Cs
71-3000BR	Semi-Rigid Outer Shell, 3000 cc w/Bracket	1/Cs

#### Bulk

71-1000BRB	Semi-Rigid Outer Shell, 1000 cc w/Bracket	20/Cs
71-1500BRB	Semi-Rigid Outer Shell, 1500 cc w/Bracket	20/Cs
71-3000BRB	Semi-Rigid Outer Shell, 3000 cc w/Bracket	12/Cs
71-1000DSB	Semi-Rigid Outer Shell, 1000 cc w/DISS Assembly	20/Cs
71-1500DSB	Semi-Rigid Outer Shell, 1500 cc w/DISS Assembly	20/Cs



Semi-Rigid Liner & Adhesive Lid

# SafeLiner®

Elegantly simple. Innovatively safe.

*Your Front-Line Defense for Optimum Fluid Control*

**SUCTION CANISTER SYSTEMS**



Semi-Rigid Liners: 3000 cc, 1500 cc, and 1000 cc



Semi-Rigid Outer Shells: 3000 cc, 1500 cc, and 1000 cc

# Suction & Fluid Waste Management

## SUCTION CANISTER SYSTEMS

### Crystalline™ Rigid Canister System

- **Larger ports for better suction**
- Completely disposable
- May be used with a regulator, wall outlet or a central vacuum system
- 300 cc, 1200 cc, 1500 cc, and 2500 cc capacities
- Available with or without elbows
- Easy-to-read printed gradations
- Smudge-free surfaces
- Plenty of space for marking patient information
- For single-patient use
- Latex free
- Secure press-on lids stay tight during transport and disposal, to help eliminate risks
- Built-in pour spouts on all lids
- Filtration of *staphylococcus aureus* at 99.5% efficiency
- Proven filter in lid to trap aerosolized microorganisms
- Validated positive shut-off valve prevents overflow
- Kits include tubing, connectors, solidifier and more
- Initial hardware provided on consignment
- Available in single, four and up to eight-canister set-ups



300 cc, 1200 cc, 1500 cc, and 2500 cc Sizes

	Product Number	Case Quantity	Elbow*	Solidifier Pouch (500 cc)	Tubing			
					¼" x 18" Conn.	¼" x 18" Funnel	¼" x 6 ft. Conn.	¼" x 12 ft. Conn.
1200 cc	71-3001	40	2					
	71-3002	30	2				1	
	71-3003	30	2		1		1	
	71-3004	30	2			1	1	
	71-3005	30	2					1
	71-3006	30	2		1			1
	71-3007	30	2			1		1
	71-3008	30	2	2			1	
	71-3009	30	2	2	1		1	
	71-3010	30	2	2				1
	71-3011	30	2	2	1			1
1200 cc w/DISS	71-3101	40	1					
	71-3102	30	1				1	
	71-3105	30	1					1
	71-3108	30	1	2			1	
	71-3110	30	1	2				1

\* Elbow placed on patient port when one is used; placed on both patient and vacuum ports when two are used.



# Your Front-Line Defense for Optimum Fluid Control

## SUCTION CANISTER SYSTEMS



1500 cc

2500 cc

Product Number	Case Quantity	Elbow*	Solidifier Pouch (1000 cc)	T-Connector	Tubing							
					¼" x 18" Funnel	¼" x 18" Conn.	¼" x 6 ft. Funnel	3/16" x 6 ft. Conn.	¼" x 6 ft. Conn.	3/16" x 10 ft. Conn.	¼" x 12 ft. Conn.	
71-1101	40											
71-1105	40	2										
71-1166	32	1			1							
71-2040	32	1							1			
71-2041	32	1						1				
71-1132	32	1					1					
71-1126	28	1		1	1					1	1	
71-2034	32	2	1									
71-1171	32	2			1							
71-1164	16	2					1					
71-1110	32	2			1		1					
71-2053	32	2				1			1			
71-2054	32	2			1				1			
71-2051	32	2	1		1				1			
71-2071	32	2	1		1				1			
71-2064	16	2										1
71-1155	28	2			1							1
71-2080	32	2			1					1		
71-2043	32	1								1		
71-1103	32											
71-1107	32	2										
71-2035	32	2	1									
71-1131	32	1			1							
71-1130	32	2			1							
71-2032	32	2					1					
71-1112	32	2			1		1					
71-2079	32	2			1				1			
71-1189	32	1							1			
71-1196	32	1								1		

\* Elbow placed on patient port when one is used; placed on both patient and vacuum ports when two are used.

# Suction & Fluid Waste Management

## SUCTION CANISTER SYSTEMS

### ReliaFlex™ Flexible Liner System

#### Flexible Liners

- Larger liner sizes than most systems that eliminate splashes and regurgitation from patient and vacuum ports when removed from shell
- Proven non-mechanical, hydrophobic valves help prevent overflow in wall systems
- Large diameter tubing provides a **28% increase in suction flow**
- Three sizes to collect more waste and eliminate need for multiple liners
- Orthopedic sized ports in each liner, with built-in pour spout
- Attached press-on caps for each port and pour spout
- Unique lid design catches excess fluid when tubing is removed from ports
- Latex free

#### Flexible Liner Kits

- Comes in a variety of standard kits
- 1300 cc, 1800 cc, and 3200 cc canister sizes
- Many different kit combinations from which to select
- Kits can include elbows, tubing (both funnel and connector) and solidifier
- Latex free

#### Outer Shell Hardware

- Durable outer canister shell comes in wall mount or DISS mount option
- Outer shell with bracket comes with pre-attached reinforced tubing ready to connect easily to the ReliaFlex liner
- Each polycarbonate bracket has internal on/off valve
- Polycarbonate alternative DISS mount option helps prevent adapter breakage and enhances safety once liner is full
- DISS mount includes sturdy canister shell
- Initial hardware provided on consignment basis
- Latex free



3200 cc, 1800 cc, and 1300 cc Sizes



Durable outer shells



Anti-bacterial, non-mechanical, hydrophobic shut-off filter



Large, easy-to-read gradations (Bracket-style Mount for Outer Shell)



Larger ports for 28% more powerful suction flow (DISS Mount -style for Outer Shell)



# Your Front-Line Defense for Optimum Fluid Control

## SUCTION CANISTER SYSTEMS

# ReliaFlex™

	Product Number	Case Quantity	Elbow*	Solidifier Pouch (1000 cc)	Tubing		
					¼" x 6 ft. Funnel	¼" x 6 ft. Conn.	¼" x 12 ft. Conn.
1300 cc	71-9100	50					
	71-9101	50	1				
	71-9102	50	1	1			
	71-9104	50	1		1		
	71-9105	50	1			1	
	71-9106	50	1	1		1	
	71-9107	50	1				1
1800 cc	71-9200	50					
	71-9201	50	1				
	71-9202	50	1	1			
	71-9204	50	1		1		
	71-9205	50	1			1	
	71-9206	50	1	1		1	
3200 cc	71-9300	50					
	71-9301	50	1				
	71-9302	50	1	1			
	71-9304	50	1		1		
	71-9305	50	1			1	
	71-9306	50	1	1		1	

\* Elbow placed on patient port when one is used; placed on both patient and vacuum ports when two are used.

## ReliaFlex™ Hardware

Product #	Description	Quantity
71-1300BR	ReliaFlex Outer Shell, 1300 cc w/Bracket Mount	1/Cs
71-1300DS	ReliaFlex Outer Shell, 1300 cc w/DISS Mount	1/Cs
71-1800BR	ReliaFlex Outer Shell, 1800 cc w/Bracket Mount	1/Cs
71-1800DS	ReliaFlex Outer Shell, 1800 cc w/DISS Mount	1/Cs
71-3200BR	ReliaFlex Outer Shell, 3200 cc w/Bracket Mount	1/Cs

## Tandem Tubing

Product #	Description	Quantity
71-9042	Tandem Tubing for Liners	50/Cs



Tandem Tubing (71-9042)

# Suction & Fluid Waste Management

## SPECIALTY SUCTION CANISTER SYSTEMS

### Critical Measurement Canisters

- Ideal where small volumes of fluid must be accurately measured
- 300 cc total capacity
- Fits in standard 1200 cc wall bracket
- Clear, easy to read graduations with calibrations in 5 cc increments
- $\pm 10\%$  accuracy at 0-25 cc;  $\pm 5\%$  accuracy at 25 cc or greater
- Steps at 50 cc and 150 cc for fast and easy "at-a-glance" readings
- Can be used as stand-alone or in tandem
- Includes shut-off filter mechanism
- Completely disposable
- Latex free

Product #	Description	Quantity
71-7101	Critical Measurement Canister	48/Cs



# Your Front-Line Defense for Optimum Fluid Control

## SPECIALTY SUCTION CANISTER SYSTEMS

### Omni-Jug®

- 16 Liter disposable rigid canisters, the largest on the market
- Allows use of up to four devices simultaneously
- Eliminates changing canisters during heavy fluid procedures
- Fits any O.R. ring stand for easier transport
- Floor dolly available for use with Omni-Jug for easy movement during and after procedure
- Available with or without specimen trap
- Siphon available to easily discard fluid into any hopper in 90 seconds
- Latex free

Product #	Description	Quantity
5036-00	Omni-Jug	4/Cs
5036-01	Omni-Jug w/Collection Sock	4/Cs
5036-22	Manifold w/Collection Sock	20/Cs
5036-10	Floor Dolly	1/Cs
5036-20	Carrying Handle, Reusable	1/Cs
5036-05	Roll Stand, Omni-Jug	1/Cs



# Omni-Jug®



Collection Sock available  
(5036-22)



Floor Dolly for easy transport  
(5036-10)



Omni-Jug Roll Stand  
(5036-05)



Simple, one-handed carrying  
handle available (5036-20)

## SPECIALTY FLUID CONTROL PRODUCTS

### Drain-Jug™

- Eliminates the need for floor drains which are no longer allowed\*
- Collects fluid waste from any drape, pouch or pump utilizing gravity
- Great for arthroscopic drain pumps and cystoscopic pouches
- Replaces use of hazardous, open-topped kick buckets
- Can be emptied using Siphon or using Aqua-Box®
- Also fits dolly for easy transport
- Latex free

Product #	Description	Quantity
6036-00	Drain-Jug	10/Cs
6036-LF	Drain-Jug w/Cysto Pouch for Liebel-Florsheim	10/Cs
6036-SM	Drain-Jug w/Cysto Pouch for Siemens Table	10/Cs
6036-50	Drain-Jug w/Cysto Pouch for OEC 2500 Table	10/Cs
6036-680	Drain-Jug w/Cysto Pouch for OEC 2600/2800 Table	10/Cs
6036-SK	Drain-Jug w/Cysto Pouch for Skytron Table	10/Cs
5036-10	Floor Dolly	1/Cs



Drain-Jug also fits Floor Dolly (5036-10)



\* The American Institute of Architects. Guidelines for Design and Construction of Hospital and Health Care Facilities. AIA Press, Washington, D.C., 1993, p. 13.

# Your Front-Line Defense for Optimum Fluid Control

## SPECIALTY FLUID CONTROL PRODUCTS

### Siphon Pump

- Can be used to empty Omni-Jug® and Drain-Jug™
- Latex free

Product #	Description	Quantity
5036-15	Siphon Pump	1/Cs



Easily empties large canisters without spills

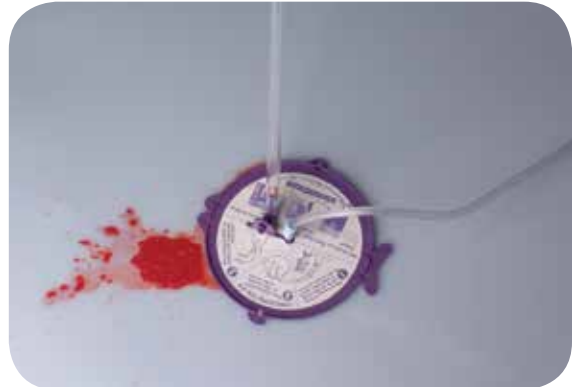
# Suction & Fluid Waste Management

## SPECIALTY FLUID CONTROL PRODUCTS

### Puddle Guppy™

- Disposable floor aspirator to quickly remove fluid from O.R. floor
- The only floor aspirator with a detachable "Fish Stick" push handle
- Great for clean up during and after high fluid cases
- One of the least expensive but most effective floor aspirators on the market
- Each Guppy comes with a "Fish Stick," which are also available separately
- Includes 72" suction tubing
- Latex free

Product #	Description	Quantity
5036-30	Puddle Guppy (Includes 1 Fish Stick)	30/Cs
5036-31	Puddle Guppy w/Clamp (Includes 1 Fish Stick)	30/Cs
5036-35	Fish Sticks	10/Cs



Fast, effective fluid-pick-up



### Safe Cord Floor Strip

- Durable, disposable safety strip designed to cover cables and cords on the OR floors thereby reducing the risk of staff tripping hazards and injuries
- Adhesive strips on the underside which secure the product to the floor, but will not leave any residue
- Bright yellow for added staff safety
- Can be safely walked on or rolled over by equipment without compromising function
- Simple set-up, removal, and disposal
- Latex free

Product #	Description	Size	Quantity
71-4311	Safe Cord Floor Strip	9" x 28"	30/Cs





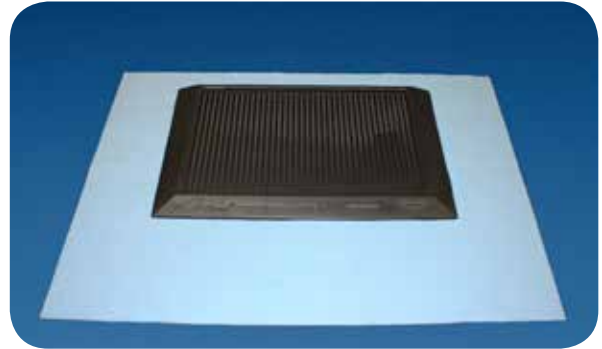
# Your Front-Line Defense for Optimum Fluid Control

## SPECIALTY FLUID CONTROL PRODUCTS

### H2NO Suction & Anti-Fatigue Mat

- Light weight for ease of set-up and disposal - less stress and improved room turnover times
- Economical and necessary for heavy fluid procedures - eliminates laundry on the floor
- Strong, yet quiet, suction with anti-fatigue properties - safe and comfortable
- Non-skid design with fluid channels to keep your feet out of standing fluid - safety
- Single use - eliminating cross contamination possibilities
- Latex free

Product #	Description	Size	Quantity
H2NO	Suction & Anti-Fatigue Mat	56" x 40"	10/Cs



### THE SUCTIONER™

- Anti-microbial disposable surgical mat
- Address three major OR issues: surgical comfort, fluid buildup, and OR Safety
- Designed and tested by world class surgeons, OR nurses, and technicians
- Incorporates revolutionary engineering process consisting of non-slip molded foam with custom tapered fluid channels
- Fluid channels help aid in keeping surgical team's feet dry and helps reduce the risk of tracking body fluids throughout the OR suite
- Elasticity and cushioning provide exceptional comfort during prolonged, strenuous surgeries; mitigating foot, leg, and back pain
- Incorporates a proprietary, highly-effective vacuum system for quiet, continuous suction. Attach directly to suction can or suction device using standard suction tubing
- Helps reduce need for countless blankets and towels placed on OR floor to absorb fluids
- Less mess on the OR floor helps provide shorter room turn-over time between surgeries
- Latex free

Product #	Description	Quantity
USA-X10D	THE SUCTIONER™ (36" x 60")	10 mats/Cs



Patent Pending



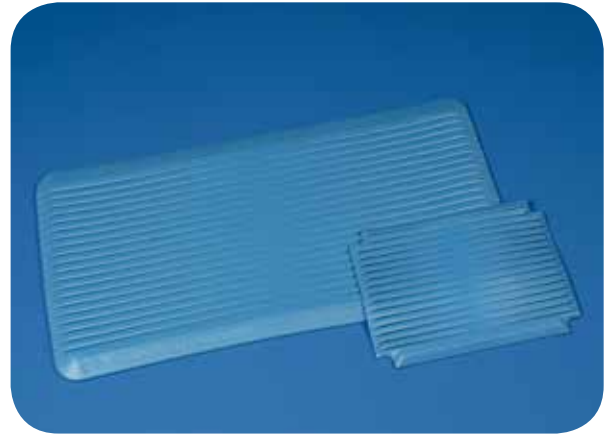
# Suction & Fluid Waste Management

## SPECIALTY FLUID CONTROL PRODUCTS

### THE SURGICAL MAT™ and THE MINI MAT™

- Patented, anti-microbial disposable surgical mat
- Address three major OR issues: surgical comfort, fluid buildup, and OR Safety
- Designed and tested by world class surgeons, OR nurses, and technicians
- Incorporates revolutionary engineering process consisting of non-slip molded foam with custom tapered fluid channels
- Fluid channels help aid in keeping surgical team's feet dry and helps reduce the risk of tracking body fluids throughout the OR suite
- Elasticity and cushioning provide exceptional comfort during prolonged, strenuous surgeries; mitigating foot, leg, and back pain
- Latex free

Product #	Description	Quantity
USA-010D	THE SURGICAL MAT™ (20" x 39")	10 mats/Cs
USA-A10D	THE MINI MAT™ (13" x 17")	10 mats/Cs



USA-010D



USA-A10D

*"The earliest and most common symptoms from prolonged standing during surgical procedures are discomfort and fatigue in the feet and legs - that is, in the shins, calves, knees and thighs. Pain and discomfort may also be felt in the hips, neck and lower back"...*

*"General recommendations: Anti-fatigue mats should be placed on the floors and standing stools" ... "Facilities should also be aware of infection control issues for non-disposable anti-fatigue matting."*

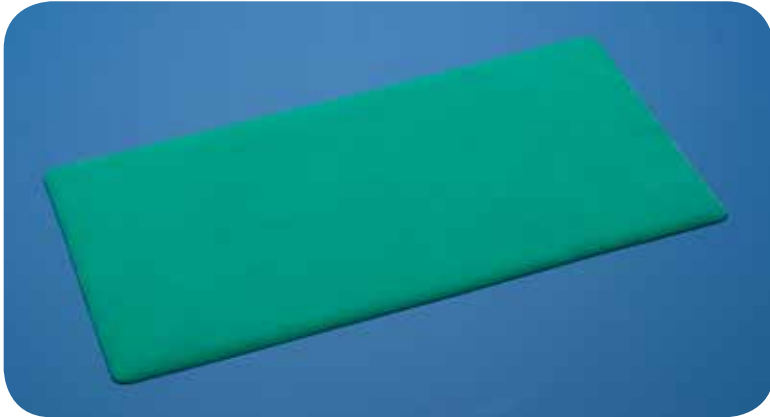
AORN Journal: Ergonomic Tool 4, June 2011

U.S. Patent No. 7,291,376



# Your Front-Line Defense for Optimum Fluid Control

## SPECIALTY FLUID CONTROL PRODUCTS



### THE SMOOTH MAT™

- Disposable, economical, ergonomic Surgical Mat designed for use in the OR specifically for longer, dry surgical procedures
- Eliminates the exhaustive pain and discomfort from standing for extended periods of time in any OR
- Non-Sterile
- Latex free

Product #	Description	Quantity
USA-S10D	THE SMOOTH MAT™ (20" x 39")	10 mats/Cs

### THE Rx1 MAT™

- Revolutionary anti-fatigue properties
- Helps reduce the strain, stress, and discomfort of prolonged standing in the workplace
- Both OSHA and AORN clearly advocate the use of anti-fatigue matting in the workplace to reduce musculoskeletal injury and improve workplace ergonomics
- Reusable - simply clean, as needed, with a mild detergent and water
- Non-Sterile
- Latex free

Product #	Description	Quantity
USA-R10D	THE Rx1 MAT™ (20" x 39")	10 mats/Cs



## SPECIALTY FLUID CONTROL PRODUCTS

### HEAVY FLUID ON THE FLOOR

#### Grey Absorbent Mats

- Helps keep fluids from ever hitting the floor
- Helps keep floors dry to decrease slips and falls
- Large sizes allow three people on mat at once
- May be positioned in a variety of locations for use in different procedures
- Accommodates rolling wheels without problems
- Stationary, non-skid surface that's comfortable to feet
- Light weight for easy clean up and removal
- Eliminates linen use
- For procedures with large amounts of fluid on floor
- Unique absorbent surface helps prevent fluid splashes
- Latex free

Product #	Description	Quantity
71-4301	Floor Mat, 4' x 2½'	32/Cs
71-4302	Floor Mat, 4' x 5'	16/Cs
71-4303	Floor Mat, 2' x 3'	32/Cs



#### Dri-Safe™ Absorbent Pad

- Super absorbent, economical disposable floor pads which eliminate expensive laundry costs
- For use wherever fluids build up, including OR floors, in front of scrub sinks, lab station floors, etc.
- Helps prevent slips and falls, as well as the transmission of harmful contaminants to healthcare providers
- Impermeable poly backing option promotes safety and keeps the pads firmly in place - fluids are locked in
- Significantly reduces OR turn over times and helps prevent cross contamination in your facility - disposal is simple
- Available in multiple sizes
- Latex free

Product #	Description	Size	Quantity
71-4307	Dri-Safe Absorbent Pad, Blue	28" x 40"	20/Cs
71-4308	Dri-Safe Absorbent Pad, Blue w/Poly Backing	28" x 40"	20/Cs
71-4309	Dri-Safe Absorbent Pad, Blue	30" x 56"	15/Cs
71-7310	Dri-Safe Absorbent Pad, Blue w/Poly Backing	30" x 56"	15/Cs



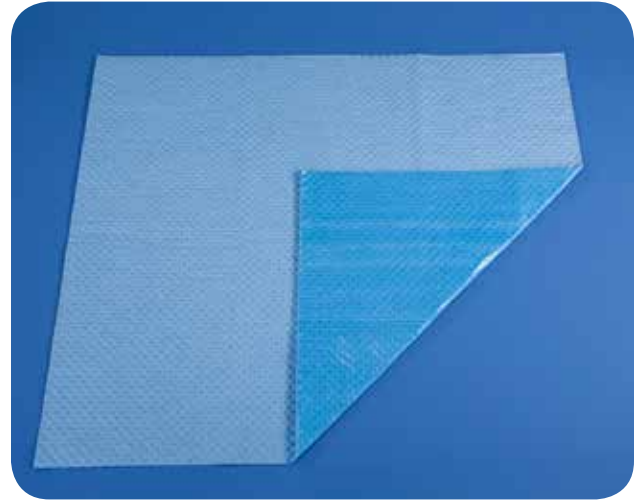
# Your Front-Line Defense for Optimum Fluid Control

## SPECIALTY FLUID CONTROL PRODUCTS

### Blue Absorbent Mats

- Three sizes to accommodate any size operating room, lab station, decontamination room, or scrub sink
- Light weight and pliable with the ability to fold - meaning ease of lifting and placement on the stocking room shelf
- Accommodates rolling casters on carts and accessories - will not tear or bunch
- Laminated impermeable backing eliminates fluid contact to floor and staining
- Cost reduction in the number of soiled linens laundered
- Latex free

Product #	Description	Size	Quantity
71-4304	Blue Absorbent Mat, Small	46" x 40"	10/Cs
71-4305	Blue Absorbent Mat, Small	46" x 72"	10/Cs
71-4306	Blue Absorbent Mat, Small	46" x 125"	10/Cs



## LIGHT FLUID ON THE FLOOR

### Satchel Sheets

- Helps keep fluids from ever hitting the floor
- Helps keep floors dry to decrease slips and falls
- Large sizes allow three people on mat at once
- May be positioned in a variety of locations for use in different procedures
- Accommodates rolling wheels without problems
- Stationary, non-skid surface that's comfortable to feet
- Light weight for easy clean up and removal
- Eliminates linen use
- Pull cord design allows easy disposal
- Available in two convenient sizes to fit any room or suite
- Latex free

Product #	Description	Quantity
59-0803NS	Satchel Sheet, Non-Sterile, 60" x 100"	10/Cs
59-0900NS	Satchel Sheet, Non-Sterile Mini, 60" x 64"	10/Cs



## WASTE FLUID DISPOSAL PRODUCTS

### Solidifier

- Effectively solidifies potentially serious infectious waste within the suction canister quickly and effectively
- Quickly penetrates throughout canister to solidify blood and body fluids
- Gels in seconds, ten times faster than other solidifiers
- No shaking required
- Retains solidity to prevent spills and leaks for safe and easy bagging and easy transport to disposal
- Concentrated formula: one ounce cost-effectively solidifies 1000 cc of liquid
- Dissolvable pouches gel 500 cc and 1000 cc, eliminating plastic bottle waste
- Chlorine-free for non-toxic incineration
- Latex free

Product #	Description	Quantity
71-0500	Dissolvable Pouch, Gels 500 cc	200/Cs
71-1000	Dissolvable Pouch, Gels 1000 cc	96/Cs
71-1200	Solidifier, 1.3 oz, Gels 1200 cc	96/Cs
71-1500	Solidifier, 1.6 oz, Gels 1500 cc	96/Cs
71-2005	Solidifier, 2.1 oz, Gels 2000 cc	36/Cs
71-3000	Solidifier, 3.2 oz, Gels 3000 cc	36/Cs
71-9000	Solidifier, 9.5 oz, Gels 9000 cc	12/Cs
71-18000	Solidifier, 19 oz, Gels 18000 cc	12/Cs



US Patent 6,797,857, and other patents pending

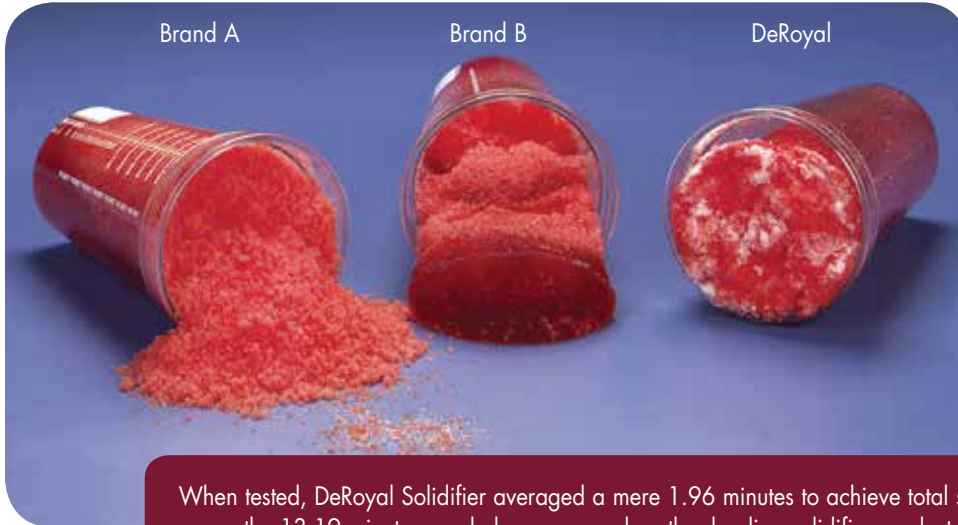


In bottles or dissolvable pouches



# Your Front-Line Defense for Optimum Fluid Control

## WASTE FLUID DISPOSAL PRODUCTS



When tested, DeRoyal Solidifier averaged a mere 1.96 minutes to achieve total solidity, versus the 13.19 minutes needed on average by other leading solidifier products – products that were prone to sand-like consistency or jelly-like spills afterward.



# Suction & Fluid Waste Management

## WASTE FLUID DISPOSAL PRODUCTS

### Aqua-Box® Waste Fluid Evacuation System

The Aqua-Box is a compact, stand-alone, wall-mounted unit that optionally adds a disinfectant before safely discarding the waste fluid down existing facility sewer lines. The Aqua-Box empties and discards fluid from any suction canister, liner, collection bag, kick bucket or any other fluid collection source. The process is quick, efficient and safe.

Able to evacuate a standard suction canister in less than 30 seconds, the Aqua-Box has the fastest fluid disposal time in the industry.

In most cases, the Aqua-Box pays for itself in less than four months by saving hospitals and surgery centers thousands of dollars associated with red bag disposal fees. And because the Aqua-Box offers a safer alternative for handling potentially infectious fluids, hospitals and surgery centers can expect fewer liabilities, creating even more bottom line savings.

The Aqua-Box can be installed in just about any wall-mounted location, thus not consuming any valuable floor space. For location convenience, the Aqua-Box can be placed in areas near the operating room, central processing, labor and delivery and the emergency department.

Due to its simple operation, space saving design, low maintenance requirements and potential cost savings, the Aqua-Box is becoming the standard for waste fluid disposal.



Rack w/Evacuation Tube Container and Ring Bracket (1500-30)

#### Accessories

Product #	Description	Quantity
1500-10	Evacuation Tube, General, 15"	100/Cs
1500-13	Evacuation Tube, Omni-Jug, 15"	100/Cs
1500-15	Evacuation Tube, Glass Receptacle, 21"	100/Cs
1500-30	Rack, Aqua-Box	1/Cs

# Your Front-Line Defense for Optimum Fluid Control

## WASTE FLUID DISPOSAL PRODUCTS

- Eliminates pouring and splashing of suction canisters
- A compact wall-mounted unit that empties ANY brand standard canister in about 12 seconds
- Automatically discards fluid waste directly into existing sewer pipes
- Optionally adds disinfectant
- The lowest-priced fluid disposal system on the market
- Requires no floor space
- Three-year parts and labor warranty
- Simple installation requires only inlet water line and sewer discharge line
- Runs totally independent of facility's vacuum system
- Requires no routine maintenance
- Expected to become the standard in disposing O.R. fluid waste
- Installation video included and full technical support available
- Available with canister rinse cycle, allowing cleaned canisters to be placed in "white bags"
- Reduces liability for employee exposure
- Four different models available to meet varying needs and budgets
- Patented technology (# 7,273,585)



Automatic Model



Rinsing Model

Feature	Automatic with Canister Rinsing	Large Automatic	Small Automatic	Small Manual
<b>Model #</b>	<b>1300-R</b>	<b>1500-00</b>	<b>1300-00</b>	<b>1200-00</b>
Fluid Evacuation Flow Rate (# seconds/liter)	3.5 seconds	3.5 seconds	3.5 seconds	6 seconds
Adjustable Canister Rinsing Cycle	Yes	No	No	No
Automatic Adjustable Electronic On/Off Switch	Yes	Yes	Yes	No
Works with Any Brand/Style Canister	Yes	Yes	Yes	Yes
Disinfectant Solution Additive	Yes	Yes	Yes	Yes
Suction Hose	5 Feet	5 Feet	5 Feet	5 Feet
Inlet	3/4" tap water @ 12 GPM	3/4" tap water @ 12 GPM	3/4" tap water @ 12 GPM	3/4" tap water @ 12 GPM
Outlet	1" drain	1" drain	3/4" drain	3/4" drain
Installation Instructions & Video	Included	Included	Included	Included
Reduced Pressure Zone (RPZ) Valve	Included	Included	Included	Included
Dimensions (H" x W" x D")	18" x 16" x 10"	14" x 16" x 6"	12" x 14" x 6"	12" x 14" x 6"
Unlimited Phone Technical Support (Business Hours)	Yes	Yes	Yes	Yes
Warranty (Parts & Labor)	3 Years	3 Years	3 Years	3 Years
Extended 3-Year Warranty	Available	Available	Available	Available

## SUCTION HARDWARE & ACCESSORIES

### Suction Accessories

- Offered with all DeRoyal canisters, suction and fluid control products
- Equips you for even the most complex set-up

Product #	Description	Quantity
71-1123	Collection Sock, General	20/Cs
71-1127	Collection Sock, General w/Weights	10/Cs
71-1122	Collection Sock, Orthopedic	20/Cs
71-2066	Collection Sock, Orthopedic w/Weights	20/Cs
71-1124	Connector, Five-in-One	50/Cs
71-1165	Connector, T-style, 3/16" to 7/16"	10/Cs
71-1118	Elbow (Right Angle Connector)	100/Cs
71-2083	Tubing, 18" Connector	100/Cs
71-1142	Tubing, 18" Funnel	100/Cs
71-2085	Tubing, 20' Connector	20/Cs
71-2063	Tubing, 36" Funnel	50/Cs
71-2084	Tubing, 72" Connector	50/Cs
71-2082	Tubing, 72" Funnel	50/Cs
71-9042	Tubing, Tandem for ReliaFlex Liners	50/Cs
71-8100RNS	Tubing, Reinforced, Clear	100/Roll



DeRoyal Suction Hardware and Accessories



Collection Sock (71-1123)



5-In-1 Connector (71-1124)



Elbow (71-1118)



Tandem Tubing (71-9042)

# Your Front-Line Defense for Optimum Fluid Control

## SUCTION HARDWARE & ACCESSORIES

Suction Hardware Guide		
Part #	Description	Use/Notes
71-1119	Adapter, DISS, Plastic	Universal plastic regulator adapter (polycarbonate); both female and male fittings. DISS (Diameter-Indexed Safety System)
71-5014	Bracket, Flat Ring, 1200 cc	Metal three-hole flat bracket for 1200 cc rigid canisters. Typically used when hung from a wall regulator with polycarbonate DISS adapter (71-1119)
71-2098	Bracket, Flat Ring, 1500/2500 cc	Metal three-hole flat bracket for 1500/2500 cc rigid canisters. Typically used when hung from a wall regulator with polycarbonate DISS adapter (71-1119)
71-5003	Bracket, Metal Ring - Narrow, 1200 cc	1200 cc ring bracket for standard metal hospital mount that has no bottom, edging or lip, 1.65" wide (typical use is on anesthesia carts)
71-2096	Bracket, Metal Ring - Narrow, 1500/2500 cc	1500/2500 cc ring bracket for standard metal hospital mount that has no bottom edging or lip, 1.65" wide (typical use is on anesthesia carts)
71-2088	Bracket, Metal Ring w/Regulator Mount	Metal bracket for single canister
71-5008	Bracket, Plastic Ring w/Valve 1200 cc	Ring bracket for 1200 cc rigid canisters to be used with plastic rollstand or patient floor wall mounts. Bracket includes on/off valve and blue vacuum hose
71-5009	Bracket, Plastic Ring w/Valve 1500/2500 cc	Ring bracket for 1500/2500 cc rigid canisters to be used with plastic rollstand or patient floor wall mounts. Bracket includes on/off valve and blue vacuum hose
71-5010	Bracket, Plastic Ring, 1200 cc	Plastic single canister ring bracket for 1200 cc canisters, 2" wide, used with existing wall mounts or DeRoyal 71-1116
71-1117	Bracket, Plastic Ring, 1500/2500 cc	Plastic single canister ring bracket for 1500/2500 cc canisters, 2" wide, used with existing wall mounts or DeRoyal 71-1116
71-5018	Bracket, Plastic Ring (Grey), 1500/2500 cc	1500/2500 cc ring bracket w/holes for regulator mount
71-5012	Bracket, Pole Mount	Mount to attach canisters to either a vertical or horizontal pole or handle
71-5017	Bracket, Rail Mount	Universal for ReliaFlex Liners, Crystalline Rigid Canisters, SafeLiner Semi-Rigid Liners
71-5019	Bracket, Rail Mount (Hill-Rom, Hanging)	Rail mount specific to Hill-Rom Headwalls to be used with ReliaFlex Liners, Crystalline Rigid Canisters, and SafeLiner Semi-Rigid Liners
71-1000T	Bracket, T Mount	Semi-Rigid Outer Shell "T Connector" Canister, 1000 cc
71-1500T	Bracket, T Mount	Semi-Rigid Outer Shell "T Connector" Canister, 1500 cc
71-3000T	Bracket, T Mount	Semi-Rigid Outer Shell "T Connector" Canister, 3000 cc
71-5046	Manifold, 4 Port	Manifold tubing used with plastic rollstand (71-5045)
71-5047	Manifold, 2 Port	Manifold tubing used with plastic rollstand (71-5045)
71-1300BR	Outer Shell Canister, ReliaFlex, 1300 cc, Bracket Mount	Outer shell for use with 1300 cc liners, sliding bracket mount; fits into standard mounts on plastic rollstand or standard wall brackets for flexible liner system
71-1300DS	Outer Shell Canister, ReliaFlex, 1300 cc, DISS Mount	Outer shell for use with 1300 cc liners, DISS adapter (polycarbonate) for mounting directly onto regulator for flexible liner system

# Suction & Fluid Waste Management

## SUCTION HARDWARE & ACCESSORIES

Suction Hardware Guide		
Part #	Description	Use/Notes
71-1800BR	Outer Shell Canister, ReliaFlex, 1800 cc, Bracket Mount	Outer shell for use with 1800 cc liners, sliding bracket mount; fits into standard mounts on plastic rollstand or standard wall brackets for flexible liner system
71-1800DS	Outer Shell Canister, ReliaFlex, 1800 cc, DISS Mount	Outer shell for use with 1800 cc liners, DISS adapter (polycarbonate) for mounting directly onto regulator for flexible liner system
71-3200BR	Outer Shell Canister, ReliaFlex, 3200 cc, Bracket Mount	Outer shell for use with 3200 cc liners, sliding bracket mount; fits into standard mounts on plastic rollstand or standard wall brackets for flexible liner system
71-1000BR	Outer Shell Canister, Semi-Rigid, 1000 cc, Bracket Mount	Outer shell for use with Semi-Rigid 1000 cc liners, sliding bracket mount; fits into standard mounts on plastic rollstand or standard wall brackets
71-1000DS	Outer Shell Canister, Semi-Rigid, 1000 cc, DISS Mount	Outer shell for use with Semi-Rigid 1000 cc liners, DISS adapter (polycarbonate) for mounting directly onto regulator
71-1500BR	Outer Shell Canister, Semi-Rigid, 1500 cc, Bracket Mount	Outer shell for use with Semi-Rigid 1500 cc liners, sliding bracket mount; fits into standard mounts on plastic rollstand or standard wall brackets
71-1500DS	Outer Shell Canister, Semi-Rigid, 1500 cc, DISS Mount	Outer shell for use with Semi-Rigid 1500 cc liners, DISS adapter (polycarbonate) for mounting directly onto regulator
71-3000BR	Outer Shell Canister, Semi-Rigid, 3000 cc, Bracket Mount	Outer shell for use with Semi-Rigid 3000 cc liners, sliding bracket mount; fits into standard mounts on plastic rollstand or standard wall brackets
71-5912	Rollstand Conversion Kit, 1200 cc	Kit required to convert Roll Stand (71-5045) to accommodate 1200 cc rigid canisters; includes (4) ring brackets (71-5008); (1) manifold (71-2046)
71-5915	Roll Stand Conversion Kit for 1500/2500 cc	Kit required to convert Roll Stand (71-5045) to accommodate 1500/2500 cc rigid canisters; includes (4) ring brackets (71-5009); (1) manifold (71-5046)
71-5045	Roll Stand, 4-can, Plastic	Plastic four canister stand w/wheels. Must add adapter kits for the following: 1200 cc - (71-5912); 1500/2500 cc (71-5915); liners (71-5046); manifold + (4) outer shells of correct size
71-5045R	Roll Stand, 4-can, Plastic w/Regulator Mount	Plastic four canister stand w/wheels. Includes DISS connection on top of roll stand to mount regulator. Must add adapter kits for the following: 1200 cc - (71-5912); 1500/2500 cc (71-5915); liners (71-5046); manifold + (4) outer shells of correct size
71-5045-8	Roll Stand, 8-can, Plastic	Plastic eight canister stand w/wheels. Must add adapter kits for the following: 1200 cc - (71-5912); 1500/2500 cc (71-5915); liners (71-5046); manifold + (4) outer shells of correct size
71-5045-8R	Roll Stand, 8-can, Plastic w/Regulator Mount	Plastic eight canister stand w/wheels. Includes DISS connection on top of roll stand to mount regulator. Must add adapter kits for the following: 1200 cc - (71-5912); 1500/2500 cc (71-5915); liners (71-5046); manifold + (4) outer shells of correct size
71-5045R-S	Roll Stand, 4-can, Plastic w/Regulator Mount, Short	Short, plastic four canister stand w/wheels. Includes DISS connection on top of roll stand to mount regulator. Must add adapter kits for the following: 1200 cc - (71-5912); 1500/2500 cc (71-5915); liners (71-5046); manifold + (4) outer shells of correct size



# Your Front-Line Defense for Optimum Fluid Control

## SUCTION HARDWARE & ACCESSORIES

Suction Hardware Guide		
Part #	Description	Use/Notes
71-5016	Roll Stand, Floor Kick, Double, Universal	Metal double canister stand, w/wheels for Crystalline rigid canisters or Reliaflex Liner System. Must add appropriate ring bracket for rigid canisters or outer shell for liners
71-5015	Stand, Floor Kick, Single, Universal	Metal single canister stand, w/wheels for Crystalline rigid canisters or Reliaflex Liner System. Must add appropriate ring bracket for rigid canisters or outer shell for liners
71-1113	Stand, Single Canister, Small	Plastic single canister stand for 1200 cc or 1500 cc Crystalline only (will not fit 2500 cc rigid canister), "Football Tee" design; no rollers. Typically used in patient care areas (i.e. LD) where wall mounts are intrusive or cannot be mounted
71-2047	Valve, On/Off, Plastic, In-Line	Plastic shut off valve for use in-line, 2 nipples
71-1167	Wall Mount Spacer	White plastic spacer used in combination with wall mount (71-1116), and ring brackets or ReliaFlex Bracket Outer Shells
71-1168	Wall Mount Stop w/Thumb Screw	Adjustable stop for wall mount brackets that do not otherwise have a stop to prevent ring brackets (71-1117) or liner outer shells (71-1300BR, 71-1300DS, 71-1800BR, 71-1800DS, 71-3200BR, 71-1000BR, 71-1000DS, 71-1500BR, 71-1500DS, 71-3000BR) from sliding all the way through the mount
71-5013	Wall Mount, Double, Universal, Metal	Metal double wall mount. Can be used to hang 2 canisters or liners from one standard hospital wall mount. Used in combination with the following plastic ring brackets: 71-1117, 71-5008, 71-5009, 71-5010, 71-1300BR, 71-1800BR, 71-3200BR, 71-1000BR, 71-15-00BR, 71-3000BR
71-1116	Wall Mount, Plastic	Plastic wall mount used in combination with plastic ring brackets, SafeLiner or ReliaFlex Bracket Outer Shells
71-5020	Wall Plate, Metal	Metal wall mount used in combination with plastic ring brackets, SafeLiner or ReliaFlex Bracket Outer Shells

# Suction & Fluid Waste Management

## SUCTION HARDWARE & ACCESSORIES



DISS Adapter  
(71-1119)



Metal DISS  
(71-2100)



Flat Ring Brackets  
(71-5014, 71-2098)



Metal Ring Brackets  
(71-5003, 71-2096)



Bracket, Metal Ring w/Regulator Mount  
(71-2088)



Bracket, Plastic Ring w/On/Off Valve  
(71-5008, 71-5009)



Bracket, Plastic  
(71-5010, 71-1117)



Bracket, Plastic w/Regulator Mount  
(71-5018)



Bracket, Pole Mount  
(71-5012)

*Your Front-Line Defense for Optimum Fluid Control*

**SUCTION HARDWARE & ACCESSORIES**



Bracket, Rail Mount  
(71-5017)



Bracket, Hill-Rom Rail Mount  
(71-5019)



Bracket, T Mount  
(71-1000T, 71-1500T, 71-3000T)



Suction Manifold  
(71-5046, 71-5047)



Outer Shells for ReliaFlex, Bracket Mnt.  
(71-1300BR, 71-1800BR, 71-3200BR)



Outer Shells for ReliaFlex, DISS Mnt.  
(71-1300DS, 71-1800DS)



Outer Shells for SafeLiner, Bracket Mnt.  
(71-1000BR, 71-1500BR, 71-3000BR)



Outer Shells for SafeLiner,  
DISS Mnt.  
(71-1000DS, 71-1500DS)



Roll Stand Conversion Kit for Crystalline  
(71-5912, 71-5915)

# Suction & Fluid Waste Management

## SUCTION HARDWARE & ACCESSORIES



Roll Stand - 4 Can  
(71-5045)



Roll Stand - 4 Can  
w/Regulator Mount  
(71-5045R)



Roll Stand - 8 Can  
(71-5045-8)



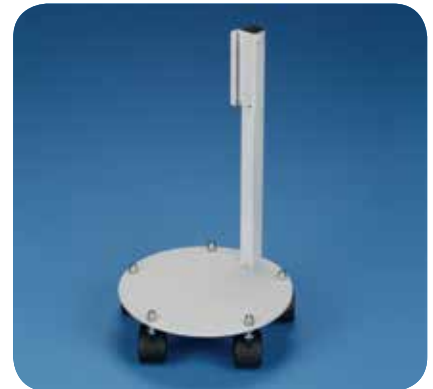
Roll Stand - 8 Can  
w/Regulator Mount  
(71-5045-8R)



Roll Stand, Short  
(71-5045R-S)



Kick Stand, Double  
(71-5016)



Kick Stand, Single  
(71-5015)



Floor Stand  
(71-1113)



In-Line On/Off Valve  
(71-2047)



Wall Mount Spacer  
(71-1167)

*Your Front-Line Defense for Optimum Fluid Control*

**SUCTION HARDWARE & ACCESSORIES**



Wall Mount Spacer w/Thumb Screw  
(71-1168)



Double Wall Mount Adapter  
(71-5013)



Wall Mount, Plastic  
(71-1116)



Wall Mount, Metal  
(71-5020)



Extended Regulator Mount  
(71-5021)

# Suction & Fluid Waste Management

fluidmate™

SafeLiner®

Crystaline™ SUCTION SYSTEM

ReliaFlex™

Omni-Jug®

PUDDLE GUPPY 

Aqua-Box®

H<sub>2</sub>N 

 DeRoyal®

Improving Care. Improving Business.

DeRoyal Industries, Inc.  
200 DeBusk Lane  
Powell, TN 37849  
800-251-9864  
865-938-7828  
[www.deroyal.com](http://www.deroyal.com)

©2013 DeRoyal  
Reprint # 0-1108  
Rev. 2/13

Crystaline Suction System, ReliaFlex, Puddle Guppy, FluidMate, and H2NO are trademarks of DeRoyal.  
SafeLiner, Omni-Jug, and Aqua-Box are registered trademarks of DeRoyal.