

ZITZI™ STARFISH PRO



**NEW
PRODUCT!**

**Combined toilet-
and shower chair**



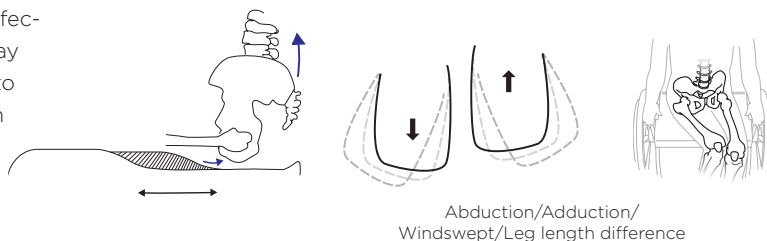


Zitzi Starfish Pro

A combined shower and toilet chair. Strong construction completely in stainless steel with a lot of adjustment possibilities to provide the best support and position for the user.

Step 1. Hip- & leg position

The combination of a correct set seat part, seat slope, effective hip belt and a good support for the sacrum take away the possibility to shear for the user. This makes it easier to conduct activity and postural control. The adjustment on the seat part is stepless in seat depth, width and abduction/adduction, this allows for a completely individual adaptation of the set part. At the same time Starfish Pro allows the user to grow with the product.



Abduction/Adduction/
Windswept/Leg length difference

Step 2. Placing the hip belt

A correct mounted hip belt positions the pelvic in such a good way so that it prevent shear completely. For Starfish Pro there are many different hip belts available to choose from.



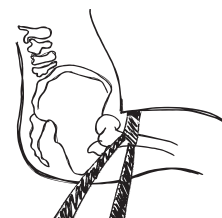
2-points belt
1 mounting per side



4-points belt
2 mountings per side



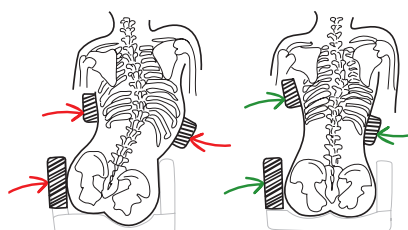
Anti-rotation belt
2 mountings per side



Correct mounted 4 point belt.

Step 3. 3-point positioning

Adjustable trunk support together with hip support create a good possibility to achieve a great positioning for the trunk and this reduces the risk to get in the wrong position and eventually create a malalignment. Good postural control leads to better head control and increases the possibilities for activity and function. Starfish Pro has the possibilities to both correct and keep the users trunk in a good position depending of course on the users possibilities to do so.



Positioning Harnesses

Together with the hip belt the harness give a good support to be able to position the trunk and make it easier to have a good head control. We provide two different positioning harnesses as a standard option.



Sternum support

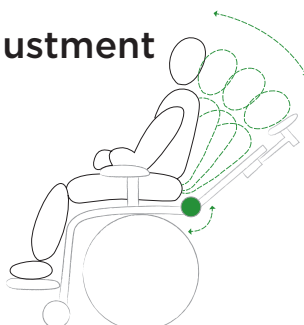
Give concentrated support on the sternum.



H-strap

Great up stretch for the shoulders and counteract a rotation. Fits great for user with a gavage.

Step 4. Hip angle adjustment



Dynamical supports and materials give freedom of movement, variation and can give a calming effect when You have extension spasticity. The back is angle adjustable which allows the user to get in His/Her perfect hip angle to brake spasticity.

Manual chassi

Headrest

The three membered arm give an optimal adjustability. The headrest is also adjustable in height.

Picture shows:
Zitzi Starfish Pro size 1-2 with adjustable back and driving bow

Positioning

The mounting hardware for the harnesses is adjustable in height and sideways.

Trunk support

Individually adjustable

Height adjusted back part

To increase the postural control

The complete construction is stainless steel.

Manual adjustable height of the seat part.

Footrest

A lot of different footrest to choose from.



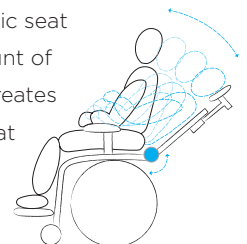
Adjustable back

This allows for a better postural control which reduces the risk to get malalignments and increases the possibilities to do activities. In Starfish Pro we are able to both correct and keep the user in a good position depending of course on the users possibilities.



Adjustable tilt and hip angle

Fixed supports is needed to position the user and create a functional seating position. Movement in the materials create a dynamic seat which allows for a certain amount of movement and variation, this creates a calming effect and works great if the user have extension spasticity for example.



Technical data

USER INFO

User length	46.8-56.5"	54.6-68.2"	66.3-78"
Chassis with seat part	Seat part size 1	Seat part size 2	Seat part size 3
Seat depth	11.7-14.8"	14-18.3"	17.5-21.4"
Seat width	14.8"	17.5"	19.9"
Bredd bendel m foder	14.8"	17.5"	19.9"
	Seat part divided size 1	Seat part divided size 2	Seat part divided size 3
Seat depth	11.7-14.8"	14-18.3"	17.5-21.4"
Seat width	13.6-16(18.7*)"	14.8-17.1(19.9*)"	15.2-17.5(20.2*)"
Width leg art incl cushion	6.4"	7.2"	7.8"
Size hygiene outlet	1.9-4.2(7*)"	1.5-8.9(6.6*)"	1.1-3.5(6.6*)"
Clearance toilet, Man. Chassis	1.6-2"	1.6-2"	1.6-2"
Clearance toilet, Hydraulic/Pwr	1.6-2.5"	1.6-2.5"	1.6-2.5"
Seat height, Man. Chassis	20.6-24.5"	20.6-24.5"	20.6-24.5"
Seat height, Hydraulic/Pwr	20.6-30.4"	20.6-30.4"	20.6-30.4"
Tilt	-5-30°	-5-30°	-5-30°
Hip-/Back angle	-10-35°	-10-35°	-10-30°
Chassis, width	21"	21"	23"
Chassis, length	26.9"	26.9"	30.8"
Wheels	4"	4"	4"
Floor clearance	2.5"	2.5"	2.5"
Ca. weight incl. headrest, footrest, armrest	68.3 lb.	72.7 lb.	77.1 lb.
Max user weight Man. Chassis	265 lb.	265 lb.	330 lb.
Max user weight Hydraulic/Pwr	220 lb.	220 lb.	265 lb.

* Seat parts mounted in the outer tracks

BACK		
Size 1:	Back Height	17.9"
	Back Profile	19.5"
Size 2:	Back Height	21.8"
	Back Profile	23.4"
Size 3:	Back Height	25.7"
	Back Profile	27.3"

LATERAL SUPPORT		
Size 1:	Trunk Width	8.2-11.7"
	Trunk Depth	5.4"
Size 2:	Trunk Width	9.3-13.2"
	Trunk Depth	6.6"
Size 3:	Trunk Width	11.7-15.6"
	Trunk Depth	7.8"
Lateral adjustment +/- 3.3"		

FOOTREST			
	Footrest size 1	Footrest size 2	Footrest size 3
Foot plate (W x D)	13.4 x 8.7"	14.8 x 9.9"	14.8 x 12"
	Footrest divided size 1	Footrest divided size 2	Footrest divided size 3
Foot plate (W x D)	6.2 x 8.5"	7 x 9.9"	7 x 11.9"
Profile Length	11.7"	15.6"	19.5"

High/low adjustable chassi

Headrest

The three membered arm give an optimal adjustability. The headrest is also adjustable in height.



Positioning

The mounting hardware for the harnesses is adjustable in height and sideways.

Trunk support

Individually adjustable

Picture shows:

Zitzi Starfish Pro size 1-2 (divided seat part) with adjustable back and driving bow

Height adjustable back part

To increase the postural control



The complete construction is in stainless steel.



Height adjustable by pump or electric.



Footrest

A lot of different footrest to choose from.

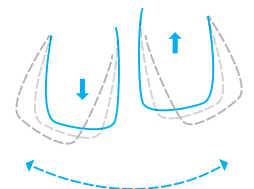


Cover material

Zitzi Starfish Pro series is equipped with a pressure relieving material in the covers. The covers are developed especially for the use in hygiene situations and are both fluid- and dirty fair at the same time it is very pleasant for the skin.

Adjustable leg parts

The leg parts can be adjustable stepless in length, width and in abduction/adduction individually. This is important to be able to get the most optimal seating position for the user at the same time it allows for the user to grow in the product. The seat part is open in the middle this allows for catheterisation.



Accessories Starfish Pro



Headrest



Headrest long



Upper mounting brackets



Adjustable back and lateral support



Urine protection



Pot



Table



Calf support



Footrest



Divided footrest swivel adapter



Hip belt



Antirotation belt



Sternum support



H-strap



Bracelet



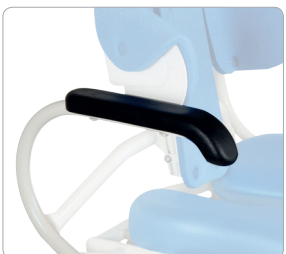
Ankle holder



Armrest plate size 1



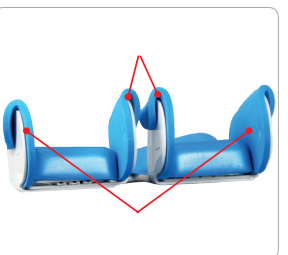
Armrest plate size 2-3



Foldable armrest



Armrest back profile



Medial and lateral extensions

