



HUMAN CARE

Your Life. Your Way.



Altair

Service Manual

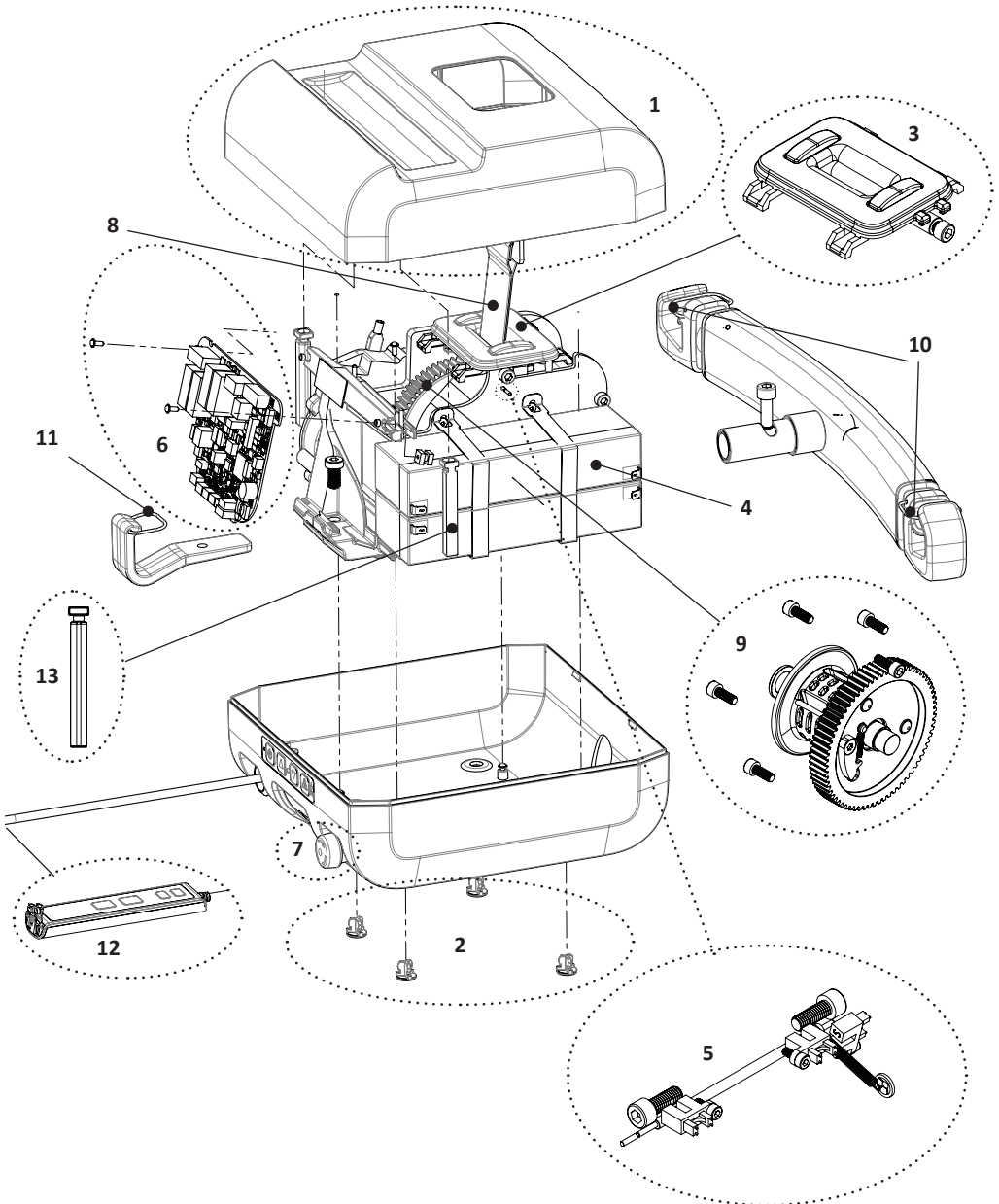


Content

English:

Altair:

Exploded view - Altair	3
Spare part kits	4
Opening the lift - Altair	6
Closing the lift - Altair	7
Reseting the service alarm – Altair	7
Changing the belt - Altair	8
Changing the battery - Altair	10
Changing the hand control - Altair	11



All spare parts for the overhead lifts are sold as a kits. circled and pointed parts shows the kits that are available. Detailed list with included parts is shown at the next page.

Kit number in exploded view	Part no.	Spare parts kit	Included in kit	Quantity of pieces in kit
1	71461	Top cover Altair - kit	Screw PT WN1452 K30x40 FZB	2
			Top cover Altair	1
2	71445	Foot portable lift - kit	Foot portable lift	20
3	71463	Upper limit switch Altair HeliQ - kit	Belt guide Altair HeliQ	1
			Belt stop switch	2
			Belt idler shaft	1
			Screw MC6S M6x16 A2	2
4	71449	Battery overhead lift - kit	CT2.3-12_Battery	2
			3M VHB 5930 Double sided adhesive tape	2
4	71450	Battery overhead lift - kit	CT2.3-12_Battery	10
			3M VHB 5930 Double sided adhesive tape	10
5	71466	Beltstop sensor Altair HeliQ - kit	Beltstop sensor with 350 cable	2
			Belttension guard sensor 1	1
			Spring Belt Tension Guard	1
			Washer Plastic BTG	1
			Washer-LB-A-4816	1
			Belt tension guard shaft	1
			Screw MC6S M3x8 A2-70	3
			Screw MC6S M6x16 A2	2
6	71474	Circuit board Altair 150kg - kit	Printed circuit board main Altair 150kg	1
			Screw PT WN1451 K30x8 FZB	2
			Washer Plastic 4.83x3.05x2.54	2
6	71475	Circuit board Altair 220kg - kit	Printed circuit board main Altair 220kg	1
			Screw PT WN1451 K30x8 FZB	2
			Washer Plastic 4.83x3.05x2.54	2
6	71476	Circuit board Altair 300kg - kit	Printed circuit board main Altair 300kg	1
			Screw PT WN1451 K30x8 FZB	2
			Washer Plastic 4.83x3.05x2.54	2
7	71489	Emergency stop portable lift - kit	Emergency Stop 16	1
8	71483	Lift belt overhead lift - kit	Lift Belt	1
9	71467	Belt roll Altair HeliQ - kit	Screw MC6S M6x16 A2	6
			Belt Roll Altair HeliQ	1
			Shaft Belt Roll Altair HeliQ	1

Kit number in exploded view	Part no.	Spare parts kit	Included in kit	Quantity of pieces in kit
			Washer roll	1
10	71455	Spring hanger bar overhead lift - kit	Spring	10
11	71456	Spring leg hook Altair Roomer S - kit	Spring	5
12	71457	Hand control Altair Roomer S - kit	Hand control Altair Roomer S	1
			Strain Relief Clamp cc12	1
			Screw PT WN1452 K30x10 FZB	2
13	71462	Screw holder Altair HeliQ - kit	Screw Holder	10
not in view	71470	Charger Europe, overhead lift - kit	Battery Charger	1
			Charger Cable Europe	1
			Handcontrol holder	1
			Ring strap for holder	1
not in view	71471	Charger Great Britain, overhead lift - kit	Battery Charger	1
			Cable Charger Great Britain	1
			Handcontrol holder	1
			Ring strap for holder	1
not in view	71472	Charger Japan, overhead lift - kit	Battery Charger	1
			Cable Charger Japan	1
			Handcontrol holder	1
			Ring strap for holder	1
not in view	71473	Charger North America, overhead lift - kit	Battery Charger	1
			Cable Charger North America	1
			Handcontrol holder	1
			Ring strap for holder	1
not in view	71491	Charger Australia overhead lift - kit	Battery Charger	1
			Cable Charger Australia	1
			Handcontrol holder	1
			Ring strap for holder	1
not in view	90407	Improvement color RAL9016		1
not in view	71811	Cover screw kit 10 pcs.	Cover screw	10

Opening the lift - Altair

ENG

1. Activate the emergency stop.



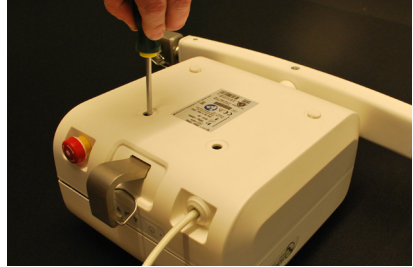
2. Turn the lift upside down. Be careful with the belt stop sensors.



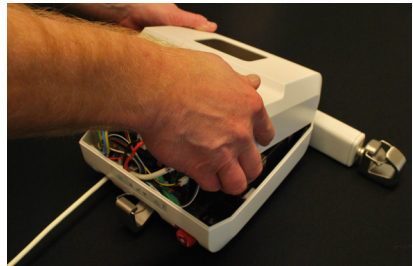
3. Remove the rubber feet closest to the leg hook on the Altair lift.



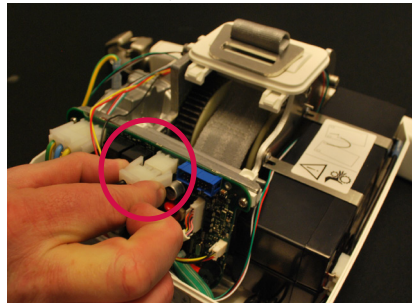
4. Untighten the two screws with a torx screwdriver (TX10) holding the covers together (about 6-7 laps or until it's loosened). The screws are located at the bottom of the holes for the rubber feet/plastic.



5. Turn the lift around and remove the cover by angle it a bit towards the hanger bar until you hear a "click".



6. Always disconnect the battery cable when the cover is opened.



Closing the lift - Altair

ENG

1. Make sure that all cables are connected as they were when opening the lift.
2. Make sure no cables are pinched between the covers.
3. Follow the steps 1-6 in the “opening the lift chapter” in reverse.

Don't forget the rubber feet!

Remember to attach all cables before closing the lift!

Reseting the service alarm – Altair

ENG

After the service is finished the service alarm should be reset.

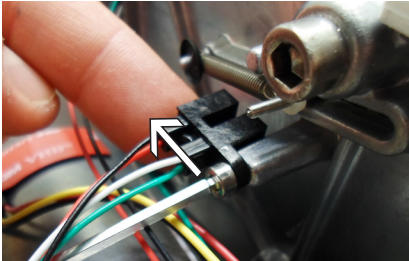
- Connect the lift to a computer thru “Data and service application”. In the software, click service and log in with your login details. Click on the button “Reset service alarm”.

Datum	Tid	Beskrivning
2016-02-23	13:55	Nedänkning i nödsituationer
2016-02-23	13:55	Nedänkning i nödsituationer
2016-02-23	13:55	Nedänkning i nödsituationer
2016-02-23	13:55	Nedänkning i nödsituationer
2016-02-23	13:55	Nedänkning i nödsituationer

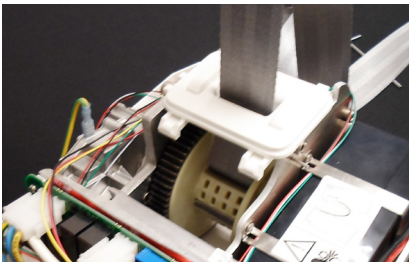
The belt can be changed without removing the belt outlet.

Follow the steps 1-5 in the “opening the lift chapter”.

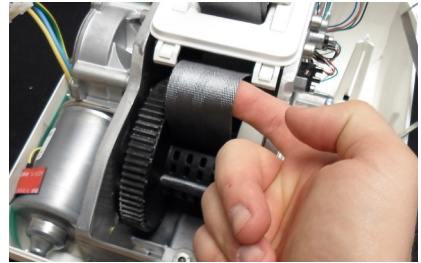
1. Re-activate the emergency stop.
2. Unscrew the Opto-switch for the belt tension guard and turn it 90° in order to be able to freely operate the lift without weight.



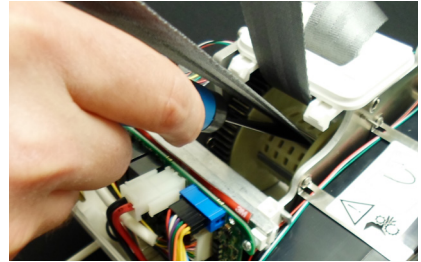
3. Drag the belt out all the way from the belt roll.



4. Create a big loop.



5. Use for example a spatula to create a loop on the other side.



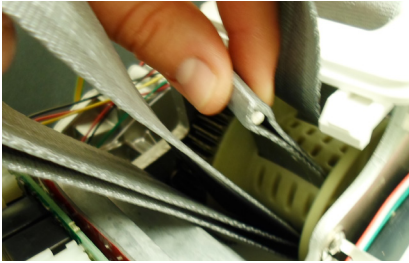
6. Press “up” button on the hand control to turn the belt roll and grab the loop.



7. Use the spatula again to get the end of the belt with the small pin out.



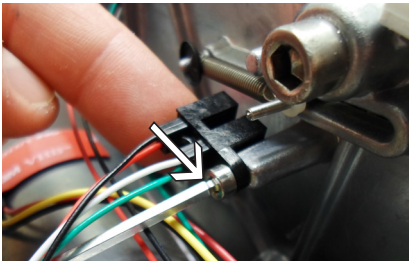
8. Return the belt roll with the up button on the hand control. Grab the belt.



9. Remove the pin, the belt is now loose.

10. To insert the new belt, do the steps in reverse.

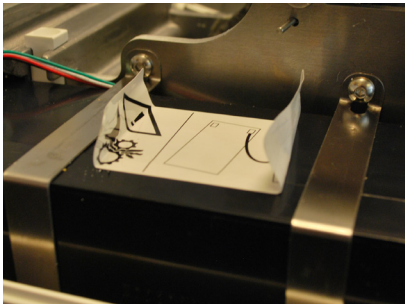
After the new belt is assembled. Make sure to position the opto-switch to it's starting position!



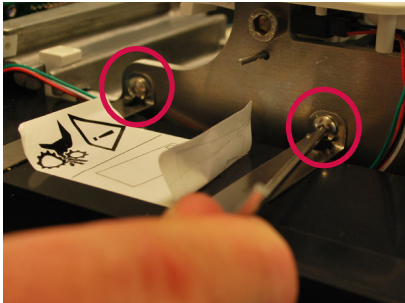
The battery pack consists of two 12 V, 2.3 Ah, lead type batteries. The lifetime is up to 5 years depending on charging and usage.

Replacing the battery:

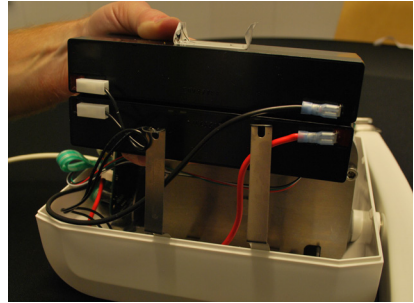
1. Follow the steps 1-6 in the “opening the lift chapter”.
2. Try to not damage the warning label on top of the battery, for example by folding up the ends of the label.



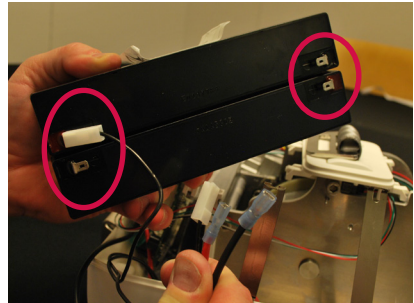
3. Unscrew the two metal brackets from the chassis by using a 2,5 mm Allen key.



4. Lift up the battery pack from the lift.



5. When the batteries is removed from the lift, disconnect all four cables.

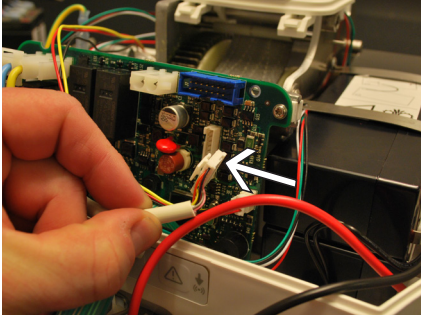


6. Fit the new batteries and re-connect the cables. Make sure the batteries are connected the same way as before the change.
7. Secure the battery cables between the battery (outside the steel brackets) and the lift cover.
8. Follow the steps 1-3 in reverse to complete the battery change.

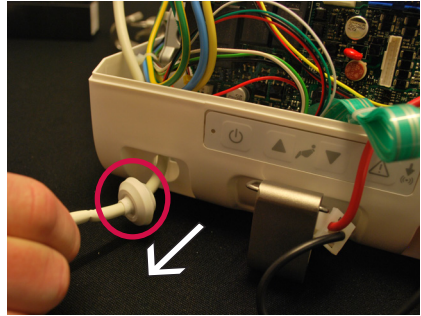
Changing the hand control - Altair

ENG

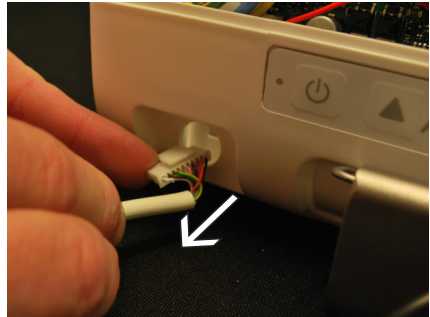
1. Follow the steps 1-6 in the “opening the lift chapter”.
2. Remove the connector on the hand control cable from the circuit board (PCB) by pressing on the small plastic lock on the left side.



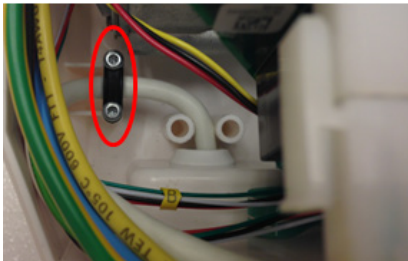
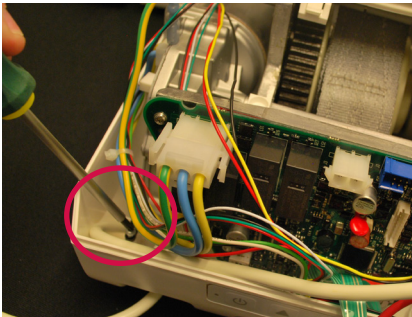
4. Remove the rubber seal from the cover.



5. Pull the cable and the connector out through the hole.



3. Remove the two screws from the cable holder with a torx screwdriver 10 mm (T10).



6. Repeat the steps in reverse in order to connect the new hand control.

If the hand control is damaged/broken, the cable can be cut to make it easier to remove the cable.