



Serene Elite

Alternating Pressure Redistribution System with Low Air Loss

- Suitable for patients with high to very high risk for pressure ulcers
- Ventilated low air loss for patients' upmost comfort
- Cell-on-Cell bladder to avoid bottoming out
- Unique heel relief function for comprehensive care for patients
- The design of five different modes of treatment fulfilling various patients' needs



Care for a Healthy Life

APEX

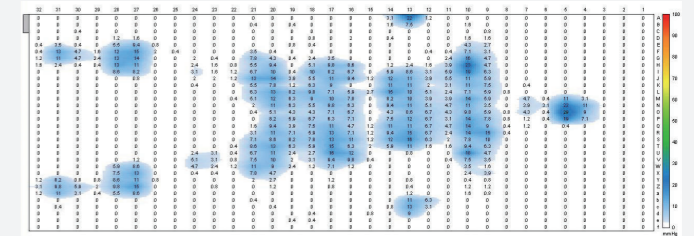


Serene Elite

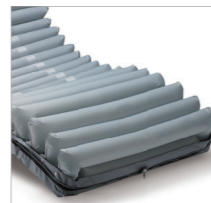
Alternating Pressure Redistribution System with Low Air Loss

Pressure Relief During Alternating

Pressure mapping reveals that in alternating mode, bladder A & B take turns to inflate and deflate can significantly relieve the body pressure



Ventilated Low Air Loss
Wick moisture away to keep the patients comfort



Cell-on-Cell Bladder
The bottom cells act as basic pressure support to avoid bottoming out in case of power failure



Heel Relief Function
Single air-cell deflation can float the heels with zero pressure



Visual and Audible Alarm

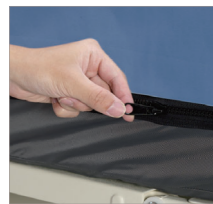
- Low Pressure
- Power Failure
- Tech Support



High Compressor Volume Airflow



CPR Valve
Quickly deflate the mattress during emergency



Zipper-all-around Cover
Reduce ingress of unwanted fluid and simply one step to remove for cleaning



4-Way Stretch PU / Nylon PU

- Low friction and shear
- Vapour permeable
- High-flame retardant
- Water resistant



Water Resistance 4-Way Stretch Vapour Permeable Flame Resistance



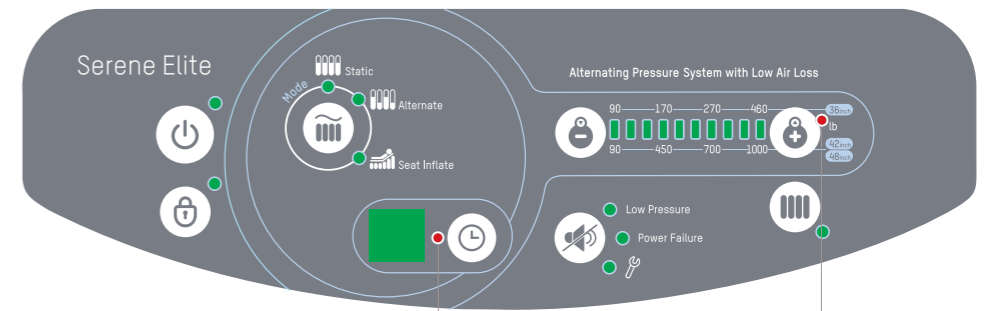
Cable Management
For a safety operational environment



Quick Connector
Once with cap on, instantly switch to static air mattress for transportation need

5 Modes to Fulfill Individual Needs

- Max Firm
- Alternating
- Continuous Low Pressure (CLP)
- Seat Inflation w/ Alternating
- Seat Inflation w/ CLP



4-Cycle Time (5/10/15/20 mins)

10 Comfort Levels

Specification

Model	Serene Elite			
Pump	Dimension	13.4" x 5.9" x 9.2" / 34.0 x 15.0 x 23.4 cm		
	Weight	6.83 lbs / 3.1 kg		
Case Material	Flame retardant ABS			
Supply Voltage	AC 110-120V 60 Hz, 0.17A			
Operating Cycle	10/15/20/25 min. selectable			
Mattress	Dimension	8" Replacement	8" Replacement	8" Replacement
	Dimension	78.7" x 35.4" x 8"	78.7" x 42" x 8"	78.7" x 48" x 8"
	Dimension	200 x 90 x 20.3 cm	200 x 107 x 20.3 cm	200 x 122 x 20.3 cm
	Cell Height	8" x 20 cells		
Weight	16.5 lbs / 7.5 Kg	18.8 lbs / 8.5 Kg	21.0 lbs / 9.5 Kg	
Material	Cover: 4-Way Stretch PU / Nylon PU ; Cell: Nylon PU; Base: Nylon PVC			
Maximum Patient Weight	460 lbs / 210 kg	1000 lbs / 455 kg	1000 lbs / 455 kg	
Flame Retardant Standards	CAL 116 & CAL 117			
HCPCS code	E0277			

Specifications are subject to change for improvement without notice

Ordering Information (For North America Only)

Model	Serene Elite			
System	With Quilted Cover	36"	42"	48"
	With Non-Quilted Cover	PD04501	PD04504	PD04507
	With Side Bolster, Quilted Cover	PD04502	PD04505	PD04508
Mattress	With Quilted Cover	PD04503	PD04506	PD04509
	With Non-Quilted Cover	PM09407	PM09501	PM09601
	With Side Bolster, Quilted Cover	PM09408	PM09502	PM09602
Pump	With Side Bolster, Quilted Cover	PM09409	PM09503	PM09603
		PD04001		