

# Self-Tensio™

Convaid's Self-Tensioning Seating System



Self-Tensio™ is Convaid's unique self-tensioning seating system which provides therapeutic pelvic positioning similar to a solid seating system in an umbrella folding rehab wheelchair.

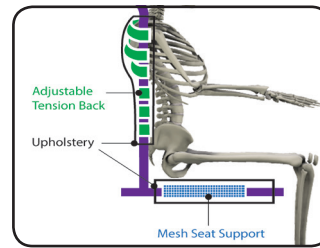


## Self-Tensio™ has 3 key design features:

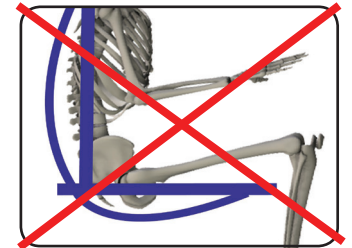
1. Expanding Frame Design
2. Flexible, Self-Adjusting Upholstery
3. Underlying Mesh Support

As the user sits:

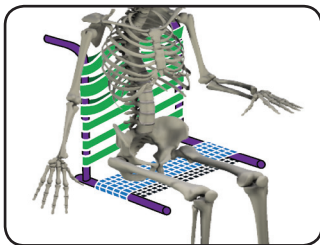
- 1 the frame is pushed outward,
- 2 thus tightening the upholstery and
- 3 the underlying mesh support.



Convaid's Self-Tensio™  
Provides Neutral Pelvic Positioning



Sling Seating System



3/4 Front View of Self-Tensio™



Self-Tensio™ provides key support at the pelvis; providing a stable pelvic platform, distributing pressure throughout the contact area and improving therapeutic pelvic support and positioning, without added weight and complexity.

Self-Tensio™ promotes:

- neutral pelvic positioning
- enhanced therapeutic posture
- decreased sitting fatigue
- increased sitting tolerance

Self-Tensio™ improves the body's position resulting in increased comfort and independence.



Side View of Self-Tensio™

 Convaid

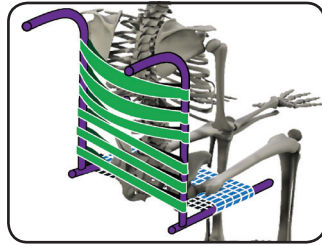
*Now You're Going Places*

# Self-Tensio™

Convaid's Self-Tensioning Seating System



Convaid's Tension Adjustable Back



## Tension Adjustable Back

Convaid's Tension Adjustable Back allows for individual adjustment to the Lumbar and Thoracic sections of the back. It customizes the support in each area and properly aids each individual's anatomical shape for maximum therapeutic support.

Convaid's Self-Tensio™ combined with our Tension Adjustable Back encourages proper body positioning and alignment. It minimizes Kyphotic posture and promotes neutral pelvic positioning.



Solid Seating System

*Self-Tensio™ provides therapeutic pelvic positioning similar to a solid seating system*



EZ Rider

Cruiser

Metro

Self-Tensio™ provides therapeutic pelvic stability and support, enhancing:

- upper body function
- breathing
- field of vision
- distal function of the upper extremities
- sitting tolerance

As a result, Self Tensio™ helps facilitate and enhance the user's daily activities.

Self-Tensio™ is built into all chairs in the:

- Upright Family
- Fixed-Tilt Family

Each chair has in-depth, comprehensive, customized positioning options which provide maximum comfort and posture.



Lightweight • Compact Folding • Convenient

