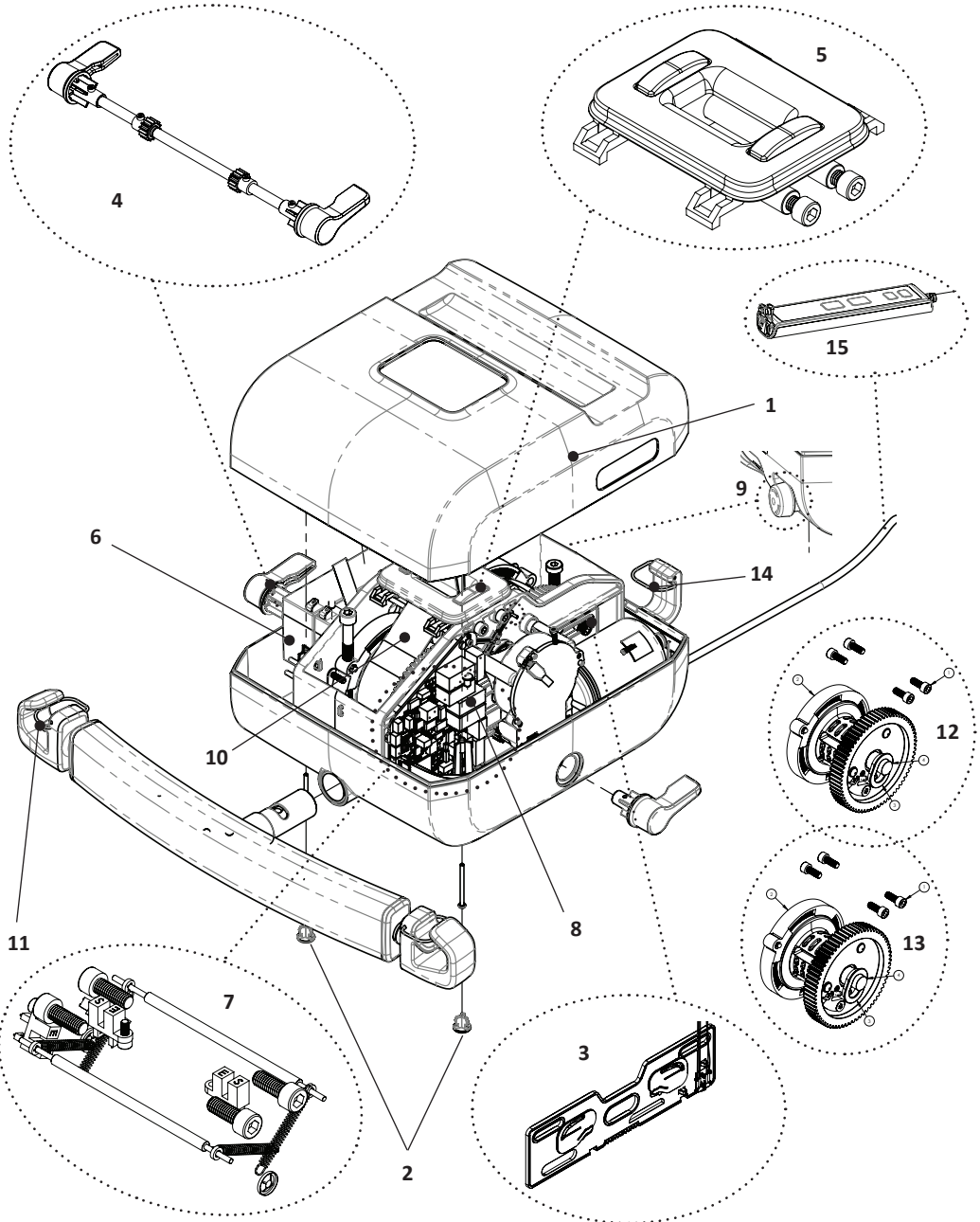


Exploded view - Roomer S

ENG



All spare parts for the overhead lifts are sold as a kits. circled and pointed parts shows the kits that are available. Detailed list with included parts is shown at the next page.

Spare part kits - Roomer S

ENG

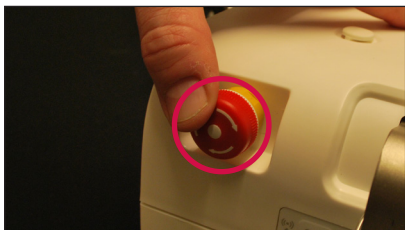
Kit number (exploded view)	Part no.	Spare parts kit	Included in kit	Quantity of pieces in kit
1	71460	Top cover Roomer S - kit	Screw PT WN1452 K30x40 fzb	2
			Top cover Roomer S	1
2	71445	Foot Portable lift - kit	Foot portable lift	20
3	71446	Slider Roomer S - kit	Screw MC6LS M6x16	3
			Screw MC6S M6x16 A2	4
			Slider with sensor	2
4	71447	Switch Roomer S - kit	Roomer S switch lever	2
			Shaft Slider	1
			Screw MC6S M3x12 A2	4
			10015-N08 Mekanex	2
			Slide bearing 8x9x3	2
5	71448	Upper limit switch Roomer S - kit	Belt guide Roomer S	1
			Belt stop switch Roomer S	2
			Belt idler shaft Roomer S	2
			Screw MC6S M6x16 A2	4
6	71449	Battery overhead lift - kit	CT2.3-12_Battery	2
			3M VHB 5930 Double sided adhesive tape	2
6	71450	Battery overhead lift - kit	CT2.3-12_Battery	10
			3M VHB 5930 Double sided adhesive tape	10
7	71451	Beltstop sensor Roomer S - kit	Beltstop sensor with 350 cable	1
			Beltstop sensor with 400 cable	1
			Belttension guard sensor 2	1
			Belttension guard sensor 1	1
			Spring belt tension guard	4
			Washer Plastic BTG	4
			Washer-LB-A-4816	2
			Belt tension guard shaft	2
			Screw MC6S M3x8 A2-70	4
			Screw MC6S M6x16 A2	4
8	71452	Circuit board Roomer S - kit	Printed circuit board main Roomer S 220 kg	1
			Screw MC6S M3x8 A2-70	3
9	71489	Emergency stop portable lifts - kit	Emergency Stop 16	1
10	71483	Lift belt overhead lift - kit	Lift belt	1

Kit number in exploded view	Part no.	Spare parts kit	Included in kit	Quantity of pieces in kit
11	71455	Spring hanger bar overhead lift - kit	Spring	10
12	71453	Belt roll clock wise Roomer S -kit	Screw MC6S M6x16 A2	4
			Belt roll clock wise	1
			Bushing for belt roll shaft	2
			Shaft Belt Roll	1
13	71454	Belt roll counter clock wise Roomer S - kit	Screw MC6S M6x16 A2	4
			Belt roll counter clock wise	1
			Bushing for belt roll shaft	2
			Shaft Belt Roll	1
14	71456	Spring leg hook Altair Roomer S - kit	Spring	5
15	71457	Hand control Altair Roomer S - kit	Hand control portable lifts	1
			Strain Relief Clamp cc12	1
			Screw PT WN1452 K30x10 FZB	2
not in view	71470	Charger Europe, overhead lift - kit	Battery Charger	1
			Cable Charger Europe	1
			Handcontrol holder	1
			Ring strap for holder	1
not in view	71471	Charger Great Britain, overhead lift - kit	Battery Charger	1
			Cable Charger Great Britain	1
			Handcontrol holder	1
			Ring strap for holder	1
not in view	71472	Charger Japan, overhead lift - kit	Battery Charger	1
			Cable Charger Japan	1
			Handcontrol holder	1
			Ring strap for holder	1
not in view	71473	Charger North America, overhead lift - kit	Battery Charger	1
			Cable Charger North America	1
			Handcontrol holder	1
			Ring strap for holder	1
not in view	71491	Charger Australia, overhead lift - kit	Battery Charger	1
			Cable Charger Australia	1
			Handcontrol holder	1
			Ring strap for holder	1
not in view	90407	Improvement color RAL9016		1
not in view	71811	Cover screw kit 10 pcs.	Cover screw	10

Opening the lift - Roomer S

ENG

1. Activate the emergency stop.



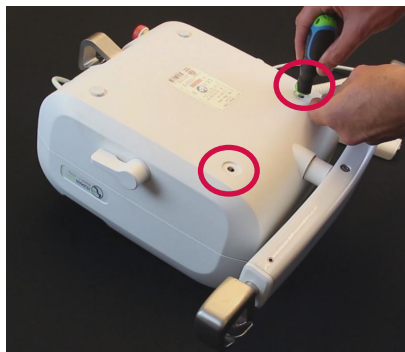
2. Turn the lift upside down. Be careful with the belt stop sensor.



3. Remove the rubber feet closest to the hanger bar on Roomer S lift.



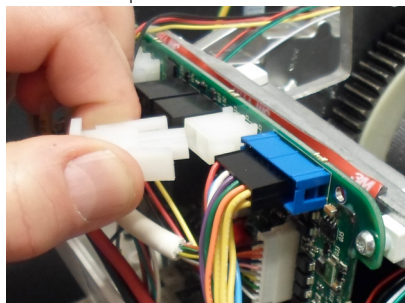
4. Untighten the two screws (TX10) holding the covers together. The screws are located at the bottom of the holes for the rubber feet.



5. Turn the lift around and remove the cover by angle it a bit towards the opposite side of the control panel until you hear a "click".



6. Always disconnect the batteries when the cover is opened.



1. Make sure that all cables are connected as they were before.
2. Make sure no cables are pinched.
3. Follow the steps 1-6 in the “opening the lift chapter” in reverse.

Remember to attach the battery cable before closing the lift!

Don't forget the rubber feet!

Reseting service alarm – Roomer S

After the service is finished the service alarm should be reset.

- Connect the lift to a computer thru “Data and service application”. In the software, click service and log in with your login details. Click on the button “Reset service alarm”.



The screenshot shows the HUMAN CARE Data- och serviceapplikation interface. The top navigation bar includes 'START', 'ÖVERSIKT', 'STATISTIK', and 'SERVICE'. The 'SERVICE' tab is active. Below the navigation bar, there are three main sections: 'ÅTERSTÄLL SERVICEALARM' (circled in red), 'UPPDATERA TIDPUNKT', and 'STÄLL IN REALTIDSKLOCKA'. The 'SERVICE' section displays the following information:

SERVICE	
Senaste service	2015-04-08
Nästa service tillfälle	2016-04-07

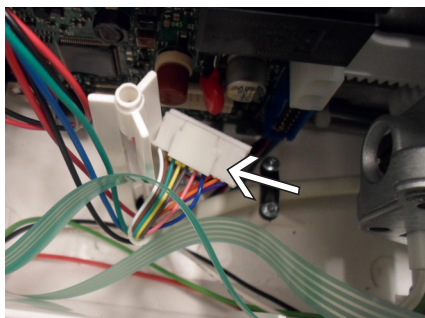
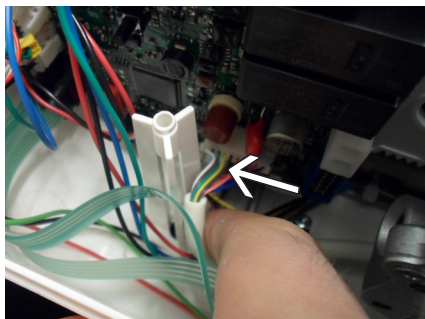
The 'FELRAPPORTER' section displays a table of error reports:

Datum	Tid	Beskrivning
2016-02-23	13:35	Nedjärkning i nödsituationer
2016-02-23	13:35	Nedjärkning i nödsituationer
2016-02-23	13:35	Nedjärkning i nödsituationer
2016-02-23	13:35	Nedjärkning i nödsituationer
2016-02-24	13:45	Nedjärkning i nödsituationer

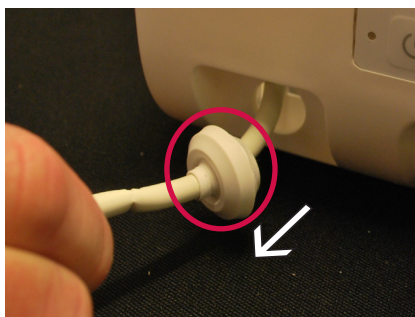
Changing the hand control - Roomer S

ENG

1. Follow the steps 1-6 in the "opening the lift chapter".
2. Remove the connector on the hand control cable from the circuit board (PCB) by pressing on the small plastic lock on the top.

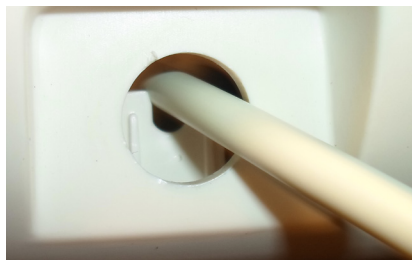


3. Remove the rubber seal from the cover.

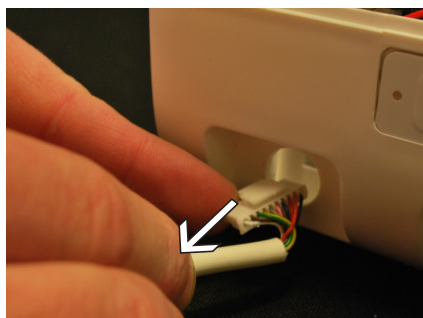


4. Use for example a screwdriver to flip over

the cable to the left side like in pictures below.



5. Pull the cable and the connector out through the hole. If the hand control is damaged, you can cut the cable and it will be easier to pull out.



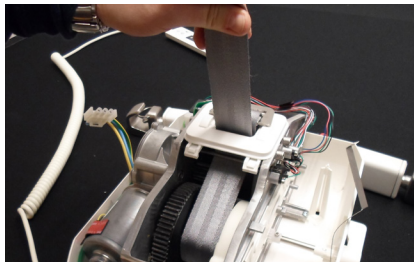
6. Repeat the steps in reverse in order to connect the new hand control.

Changing the belt - Roomer S

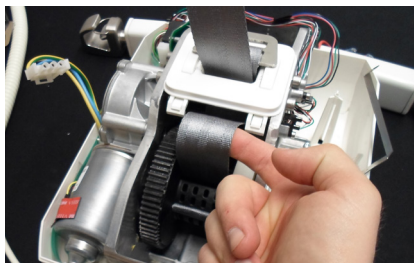
ENG

The belt can be changed without removing the belt outlet.

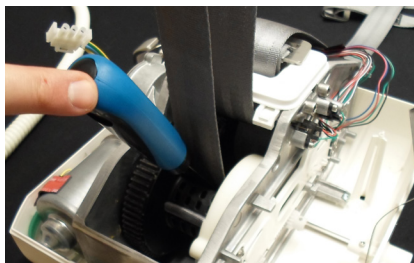
1. Drag the unlocked belt out all the way from the belt roll counter.



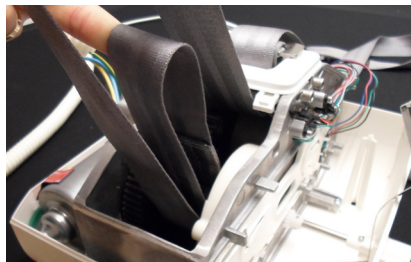
2. Create a quite big loop.



3. Use for example a spatula to create a loop on the other side.



5. Use the roomer S switch or the hand control to turn the belt roll and grab the loop.



6. Use the spatula again to get the end of the belt with the small pin out.



7. Return the belt roll with help of the Rooter S switch or the hand control. Grab the belt.



Note! Do not turn the Rooter Switch without holding the belt roll since the spring will unwind. If you drop the belt roll, rewind the belt roll 9,5 turns from the belt roll slot with a metal pin.

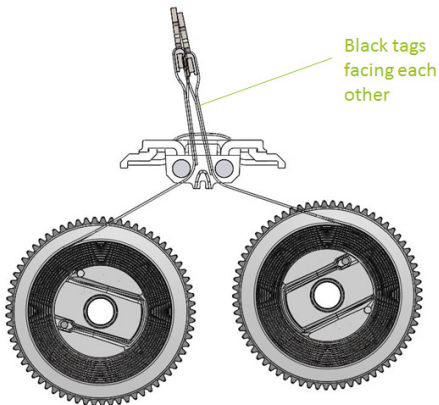
7. Remove the pin and the belt is loose.



8. If you need to remove both belts, do the same on the opposite side.

9. Insert the new belt/belts through the belt outlet as shown in the picture below.

Note! Make sure the black tags on both belts are facing each other.



Note! Make sure the belts are on the correct side of the Belt tension guard.

- The belt should enter the belt roll through the slot with the metal pin.
- The end of the belt should be fastened with the metal pin in the slot next to the slot where it entered the belt roll.
- The pin should be resting in the slot as much as possible. Pull the belt to make the pin fit in the slot.

Changing the battery - Roomer S

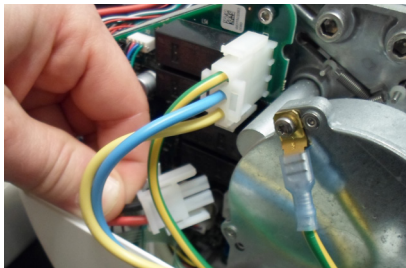
ENG

The battery pack consists of two 12 V, 2.3 Ah, lead type batteries. The lifetime is up to 5 years depending on charging and usage.

Replacing the battery:

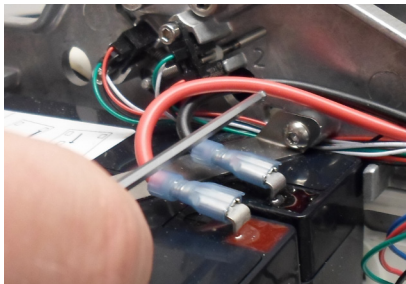
1. Follow the steps 1-6 in the “opening the lift chapter”.

Note! Make sure to remove the battery cable that connects to the circuit board (not the battery cables that is placed on the battery).

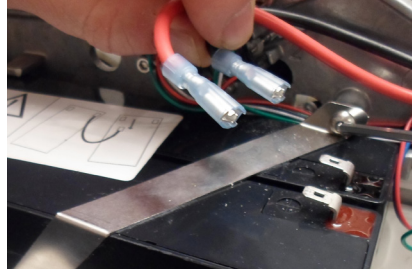


2. Unscrew the metal bracket from the chassis by using a 2,5 mm Allen key.

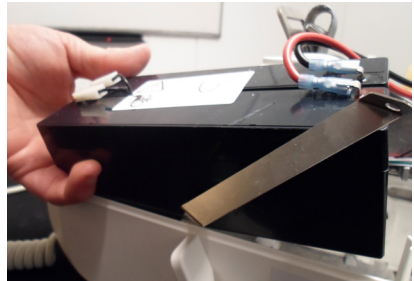
Warning! Do not remove the battery cables show in the picture below! They should stay on until the screw is loosened to avoid short circuit.



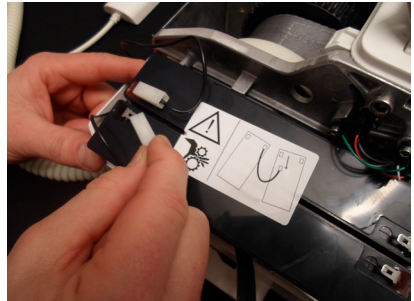
3. Now - disconnect the battery cables located on the battery.



4. Lift up the battery pack from the lift.



5. When the batteries is removed from the lift, disconnect all four cables.



5. Fit the new batteries and re-connect the cables. Make sure the batteries are connected the same way as before. The batteries connectors from the circuit board and the battery terminals are color coded. Cables from emergency stop can be connected in any order.
6. Secure the battery cables between the battery (outside the steel brackets) and the lift cover.
7. Follow the steps 1-5 in reverse to complete the battery change.