

# Wheelchair Scales

## Specifications

### Capacity:

1,000 lb x 0.2 lb (450 kg x 0.1 kg)

### Platform Dimensions:

(W x L) 36 x 36 in

### Power:

9 VDC, provided by six AA alkaline batteries (included) or AC adaptor (optional)

### Battery Type:

Six AA alkaline

### Battery Use:

25 hours continuous use with batteries

### Operating Temperature:

50° F to 104° F (14° C to 40° C)

### Warranty:

Two-year limited warranty

### Approvals:

c-Met, pending



Model SD-1150-WP

In Ground  
Scale Package

## Standard Features

- Mild steel painted scale with anti-slip rubber surface
- (H x L) 36 x 30 in handrail and mounting hardware
- Large 1 in LCD display
- Push button or manual entry of tare weight
- Unit of measure: lb only, kg only, lb/kg
- 10 ft interface cable from scale to indicator
- EHR capable
- BMI (body mass index) function
- Hold function

## Part Number/Price

Part #	Model	Capacity	Est. Weight	Price
150707	SD-1150-WP	1,000 lb x 0.2 lb (450 kg x 0.1 kg) with USB	295 lb	Consult
168360	SD-1150-WPBT	1,000 lb x 0.2 lb (450 kg x 0.1 kg) with USB and Bluetooth®	295 lb	Consult

Allscripts® Developer Program  
Certified Device

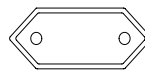
Motiontrap

## Options/Accessories

Part #	Description	Price
133077	9 VDC adaptor, 120 V/230 V auto switching †	Consult
102508	9 VDC adaptor, 230 V ††	Consult
81076	Epson TM-U220 tape printer	Consult
186830	Printer cable, 25-pin D-sub male to RJ45, 6 ft	Consult
N/A	Allscripts® EHR Interface	Consult



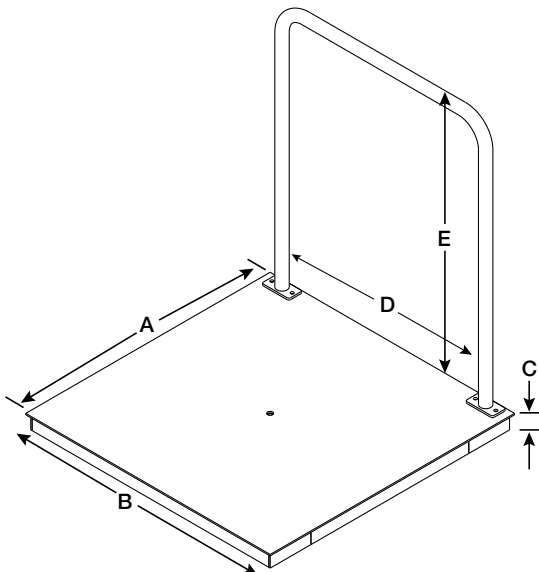
† NEMA 1-15 Plug



†† CEE 7/16 Plug

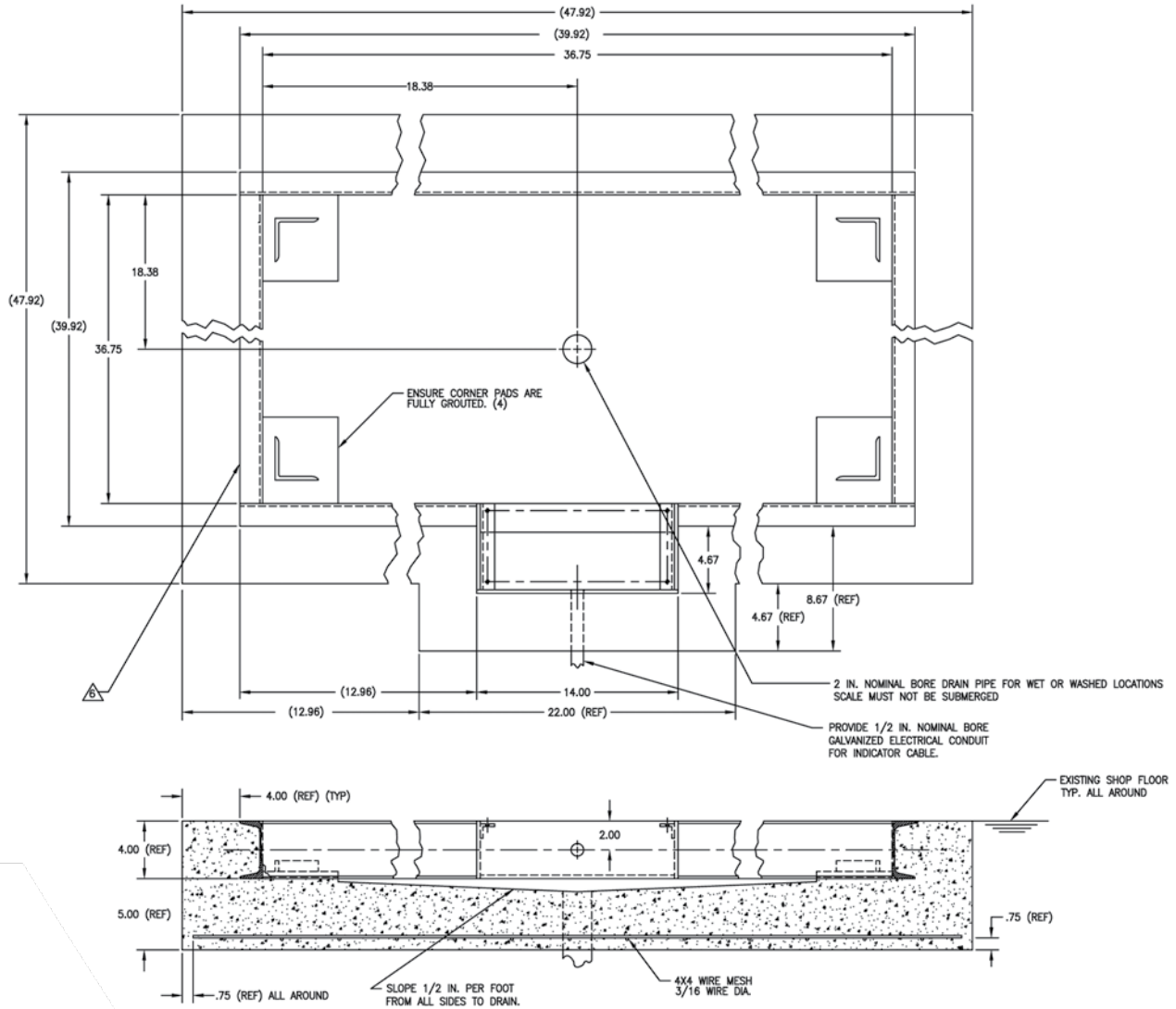
## Dimensions

Dimension	Value	Dimension	Value
A	36 in	D	31.5 in
B	36 in	E	37 in
C	3 in		



# Wheelchair Scales

## Pit Frame Concrete Details



**NOTE:**

1. USE CONCRETE OF MINIMUM YIELD STRENGTH 5000 PSI OR 6-BAG MIX.
  2. ALLOW 7 DAYS TO CURE. WET CONCRETE PERIODICALLY DURING THIS TIME.
  3. DIMENSIONS SHOWN ASSUME FIRM, STABLE SOIL CONDITIONS. WHEN SOIL CONDITIONS ARE NOT ADEQUATE, PLACE FOUNDATION AT SUFFICIENT DEPTH.
  4. IN WET OR WASHDOWN APPLICATIONS WE RECOMMEND THE USE OF HERMETICALLY SEALED LOAD CELLS, AND THAT THE JUNCTION BOX BE MOUNTED REMOTELY IN A DRY LOCATION.
  5. WIRE MESH TO HAVE MINIMUM .75 COVER BOTTOM AND SIDES.
- △ ON STAINLESS STEEL VERSIONS, TWO PIECES OF 2 INCH ANGLE WILL BE SUBSTITUTED FOR THE 4 INCH CHANNEL.