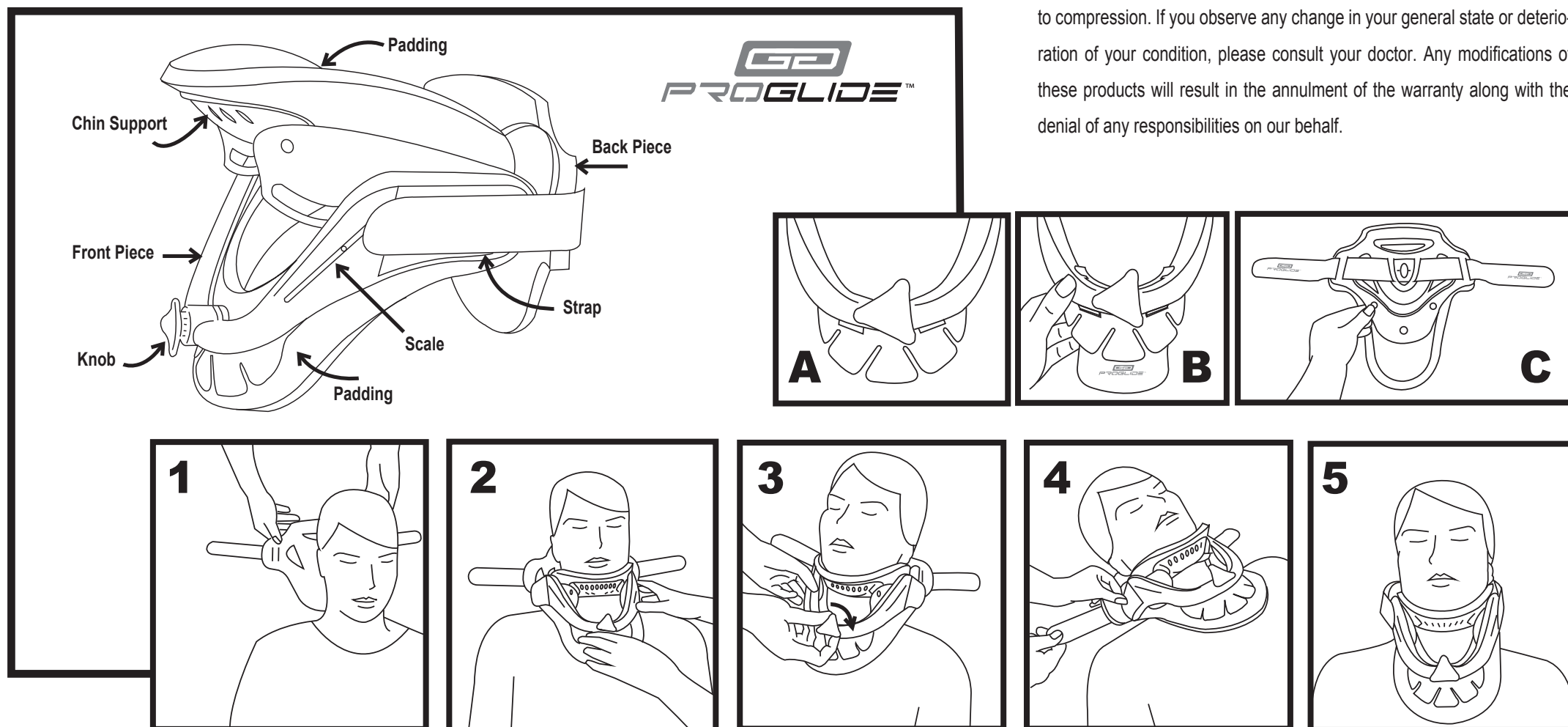


The PROGLIDE™ cervical collar provides immobilization of the cervical region in a comfortable, easy-to-use device that improves patient care. The unique height adjustment technology allows for customized fitting with a simple turn of the knob. With a one-size-fits-all design, the PROGLIDE™ reduces inventory stock and saves money. The PROGLIDE™ is a complete solution to individuals with a cervical injury that require the use of an extended wear collar.

SIDE EFFECTS AND WARNINGS

Assuming that the products are used according to instructions and given that they are not invasive, there are no side effects affecting the organism as a whole. All braces and supports, if too tight, can cause discomfort due to compression. If you observe any change in your general state or deterioration of your condition, please consult your doctor. Any modifications of these products will result in the annulment of the warranty along with the denial of any responsibilities on our behalf.



How to fit the PROGLIDE™

Note: This device should be donned and doffed while lying down unless otherwise instructed by your healthcare provider. You will need a second person to assist you in the initial fitting of the cervical collar.

- 1 - Make sure that the patient is lying flat in bed without a pillow. Their arms should be at their side with their head and neck in a neutral position at all times. Carefully, slide the back of the collar behind the patient's neck, making sure the back is centered and the straps are between the patient's ear and the trapezius. (see Figure 1)
- 2 - Slide the front of the collar up the front of the chest, under the chin, so that the ends are resting on the shoulders. (see Figure 2)
- 3 - Hold the front of the collar in place and pull out the knob turning it clockwise to raise the chin support to the appropriate height. Once the desired height is achieved, release the knob to lock the position into place (see Figure 3). The chin support can be lowered by pulling out the knob and turning it counter-clockwise, release the knob to secure the position.
- 4 - Hold the front of the collar in place and snugly attach the straps to the sides of the collar, one side at a time. The straps should be symmetrical on both sides for a proper fit. (See Figure 4)
- 5 - Make sure that there is no space between the front and back pieces and that the chin support does not protrude into the throat region. Also, make sure that no plastic is in direct contact with the skin. (see Figure 5)

How to remove the PROGLIDE™

Note: Before removing the collar make a note of where the ends of the straps are on the sides of the collar so that it can be re-applied at the same location.

- 1 - Undo the hook and loop (Velcro) straps, one at a time.
- 2 - Remove the front of the collar by sliding it down the chest and lifting it away from the body.
- 3 - Remove the back of the collar by sliding it out from under the neck.

How to apply the anterior and posterior thoracic extensions for Proglide™ 174

- 1 - Align the upper tabs of the anterior thoracic extension over the 4 slots on top of the front of the cervical collar and the lower tabs in the lower two slots (see Figure A) and push forward until the thoracic extension is locked into place and is flush with the sternal tabs at the bottom of the collar as shown in Figure B.
- 2 - Place the posterior thoracic extension underneath the back panel so that the 3 holes are aligned and attach the extension by pushing the front and back of each rivet together through the 3 holes as shown in Figure C.

Warranty: OPTEC USA products are warranted for free repair or replacement due to manufacturer's defects within 90 days of the date of purchase or the date fitted.