

Cervico™
Vertetrac™

With more than 20 years in the market, Meditrac decompression units break the cycle of pain for hundreds of thousands of patients and achieve above 85% recovery rate!

Our Mission:

Improve the quality of life for those who suffer from back and neck pain

Our Method:

Meditrac's proprietary treatment concept, "Traction on the Move", combines our innovative devices with physical therapy program, to encourage patients to be physically active while receiving decompression to the spine.

Used as recommended, our products reduce the need for surgery or any invasive procedure.

Meditrac
SMALL DEVICE, BIG RELIEF

Meditrac's products carry the CE mark and are registered with the United States Food and Drug Administration. United States Federal Law permits the sale of these devices (within the US) by a doctor's prescription only.



Meditrac
SMALL DEVICE, BIG RELIEF

3D MOBILE SPINE DECOMPRESSION

Meditrac is the manufacturer of the only 3D mobile decompression devices: the Vertetrac for back pain and the Cervico2000 for neck pain.

Our "Traction on the Move" concept, developed by a team of orthopedic surgeons, combines the benefits of decompression therapy with freedom of movement for rapid relief and improved quality of life.



Cervico™ for Neck Pain

Cervico 2000™ is an ambulatory decompression device for the treatment of acute and chronic neck pain. Easily tailored to the specific needs of each patient, Cervico 2000™ is one of the few devices that enables both symmetric and asymmetric traction to the cervical spine and the only device that uses 3 dimensional traction.

Cervico 2000™ goes beyond pain relief to targeting the actual cause of the pain by actively promoting the healing of such disorders and injuries as herniated discs, torticollis and whiplash. During treatment, patients are completely mobile, encouraged to perform light activities and exercise for active rehabilitation.



Symmetric Traction



Asymmetric Traction

The “Traction on the Move” treatment concept is based on combining motion with traction which simultaneously decrease pressure, enables fluid exchange, improves Range of Motion (ROM) and promotes recovery. Cervico2000 enables application of distraction force directly to the cervical spine alongside the cervical lordosis while retaining patient mobility.

X-Ray Results with Cervico 2000™ widens intervertebral space and releases compression



Before Treatment

The cervical spine before treatment shows hyperlordosis with nerve compression in the intervertebral foramen.



During Treatment

The cervical spine during Cervico 2000 treatment exhibits hyperflexion. The intervertebral foramen is open, there is no nerve compression and the intervertebral space is widened.



Vertetrac™ for Back Pain

The Vertetrac lower back decompression device was designed to decompress the spine whilst the patient is walking at a comfortable rate. Vertetrac developed to treat a number of spinal injuries and disorders, including: Lower back pain, Sport injuries, Herniated (slipped) discs, Sciatica, and even Scoliosis, by adding the Dynamic Brace System attachment (DBS) to the Vertetrac which enables a horizontal pressure force on the apex of the curve.



Vertetrac outperforms traditional traction devices by combining vertical, horizontal, symmetrical and asymmetrical traction that enables simultaneous 3D decompression from every dimension.

This lightweight and mobile device treats the cause of the pain, not just its symptoms. During treatment with Vertetrac, your patients enjoy complete freedom of movement as you provide superior results in less time and at a fraction of the cost.

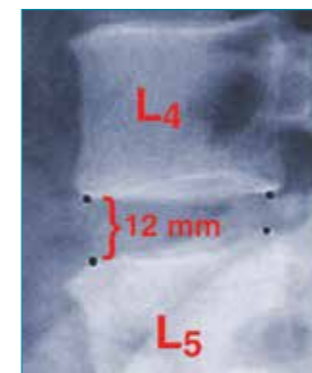


Asymmetric Traction

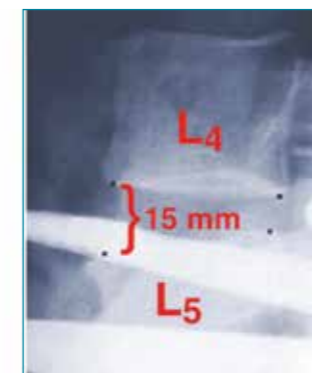


Scoliosis treatment with DBS

X-Ray Results: Vertetrac expands intervertebral space

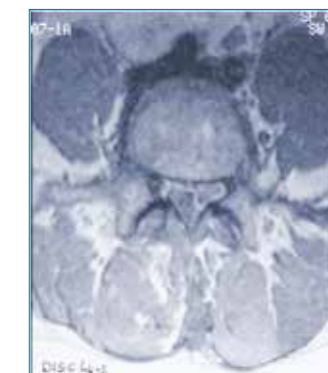


Intervertebral space measured at 12mm

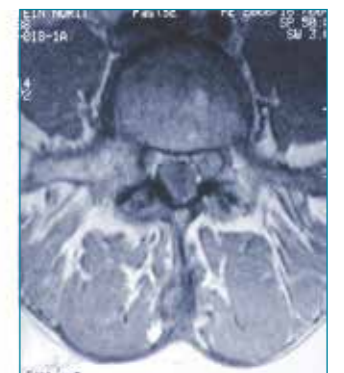


During treatment intervertebral space widens by 3mm

MRI Results: Vertetrac Successfully Treats LBP



Before Treatment



After Treatment