



PRESSURE INJURY PREVENTION

Arjo Premium mattress covers

Developed for infection control and durability

arjo

Arjo Premium mattress covers

Premium is one of the toughest medical fabrics available.¹ It is an ideal choice for busy environments where fast, high volume turnaround and frequent cleaning is essential, especially where stronger cleaning agents are required.²

4-WAY STRETCH

Premium covers are engineered with 4-way stretch. Aside from enhancing comfort, good stretch is essential to support the immersion and envelopment properties of your support surface, in order to redistribute pressure across a wider surface area.

ADVANCED CHEMICAL RESISTANCE

Polyurethane (PU) coated fabrics are a suitable choice for skin-contact products as they are water resistant, yet breathable. A key feature of Premium fabric is that its PU layer is a polycarbonate polyurethane structure, making it much more chemically resistant, and providing greater protection against cover strikethrough.³

INFECTION CONTROL

Premium fabric covers provide an effective^{1,3} barrier against Hospital Acquired Infections (HAIs), while still offering the patient high levels of comfort. It does this by maintaining a water resistant barrier layer for longer due to the high chemical and abrasion resistance.¹ Premium mattress cover fabric also contains an antimicrobial agent to assist in controlling microbial deterioration³.

INCREASED ABRASION RESISTANCE^{1,3}

With less durable coatings these regularly compromise the mattress cover and leave patients at greater risk of infection. Due to its robust nature, our Premium fabric offers greater protection against damage from hard or sharp materials that come into contact with the surface. This allows for Premium mattress covers to withstand the repeated action of abrasive cleaning and perform better than standard cover materials.^{1,3}

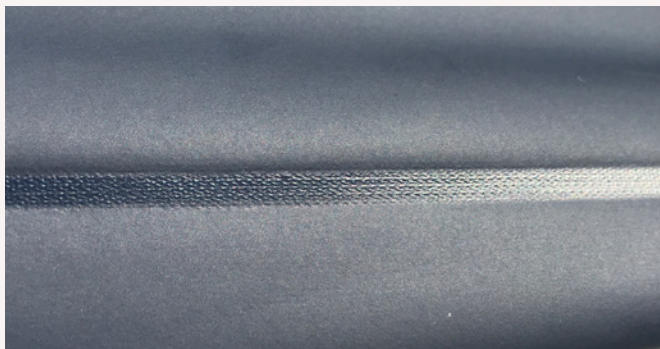


Arjo Premium cover fabric is available on a range of Arjo mattresses

Engineered for high turnover healthcare environments

Arjo offers a choice of two Polyurethane (PU) coated cover fabrics, Reliant or Premium. Both options are developed to meet the needs of a wide range of healthcare environments, and do not compromise on the pressure redistribution qualities of the mattress. The Premium covers have especially been engineered to withstand the harsh cleaning regimes that are required in many facilities with a high degree of chemical resistance.³

Welded seams



Close-up of welded seam on an Arjo Premium mattress cover

To support infection control, our mattress covers are made with welded seams and feature a watershed flap over the zipper perimeter, to help prevent fluid ingress into the core mattress and to reduce the likelihood of harbouring bacteria along the seam.

Preventing strikethrough damage even with frequent cleaning



Magnified view of mattress covers damaged by chemicals and abrasion where "strikethrough" damage is starting to occur*

Over time the cover of a mattress can become compromised with small cracks appearing due to a combination of harsh cleaning regimes, strong chemicals and abrasive contact. Arjo Premium with enhanced coating may help to prevent this damage occurring and prolong the life of the mattress.³ The properties of Arjo Premium fabric have been specifically designed to withstand longer exposure to the active ingredients in cleaning chemicals and to the abrasive action of repeated wipe down contact on the mattress surface.^{1,3}



Inside of a mattress cover with apparent strikethrough damage



Specifications

FEATURE	RELIANT IS ²	PREMIUM
Moisture Vapor Permeable	Yes	Yes
MVTR - Index method BS3424-34	10%	4%
Water Resistant /Repellant	Yes	Yes
Polyurethane coating includes an antifungal agent to control microbial deterioration of fabric	Yes	Yes
Fire Retardant ³	BS 7175: 0.1 & 5	BS 7175: 0.1 & 5
4-Way Stretch	Yes	Yes
Low Friction	No	No
Recommended Wash Temperatures	60° (140°F) 15 min	60°C (140°F) 15 min
Maximum Wash Temperatures	Max 95°C (203°F) 15 min	Max 95°C (203°F) 15 min
Recommended Drying Temperatures	60°C (140°F) or air dry	60°C (140°F) or air dry
Maximum Drying Temperature	Max 80°C (176°F)	Max 80°C (176°F)
Wipedown Chemicals	Chlorine at strength of 1000 ppm or Alcohol at 70% concentration; no phenol; rinse with a wet towel to remove chemicals; after wipe down ensure dry surface with a towel, ensure product is dry before patient placement or storage. Alternatively, Quaternary Ammonium (1920 ppm) can also be used.	
Abrasion resistance	130 000 cycles	260 000 cycles (minimum)
Lifetime Expectancy	Standard	Increased by x2.5 times longer when tested with accelerated aging (ISO 1419:1995)

Specification details listed apply to the cover fabrics only

* © Trelleborg Engineered Coated Fabrics

1. The Impact of Cleaning Chemicals on Polyurethane Mattress Cover Materials and their Propensity for Physical Damage, Jo Milnes MA(Hons), MSc(Dist): Technical Manager, Dartex Coatings Limited, Acton Close, Long Eaton, Nottingham, NG10 1FZ. 2013
2. Decontamination Procedures for Dartex Support Surfaces 2015
3. Technical Data Sheet END406, Trelleborg Engineered Coated Fabrics February 2019

© Arjo January 2022. Only Arjo designed parts, which are designed specifically for the purpose, should be used on the equipment and products supplied by Arjo. As our policy is one of continuous development we reserve the right to modify designs and specifications without prior notice. ® and ™ are trademarks belonging to the Arjo group of companies.

At Arjo, we believe that empowering movement within healthcare environments is essential to quality care. Our products and solutions are designed to promote a safe and dignified experience through patient handling, medical beds, personal hygiene, disinfection, diagnostics, and the prevention of pressure injuries and venous thromboembolism. With over 6000 people worldwide and 60 years caring for patients and healthcare professionals, we are committed to driving healthier outcomes for people facing mobility challenges.