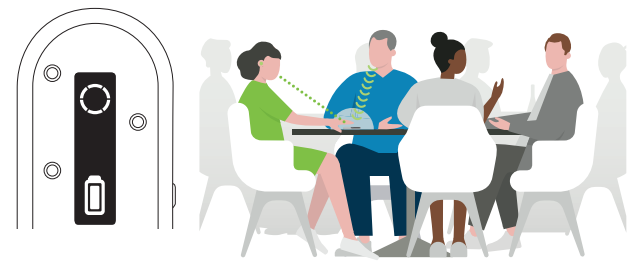


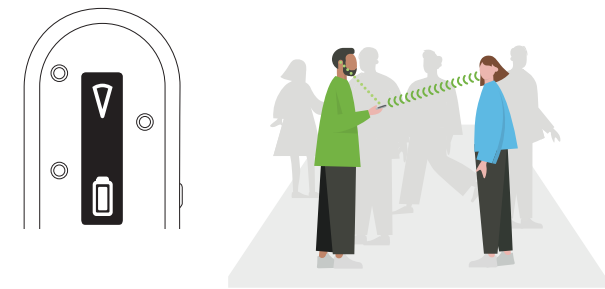
4

Table | Tisch | Table | Tafel



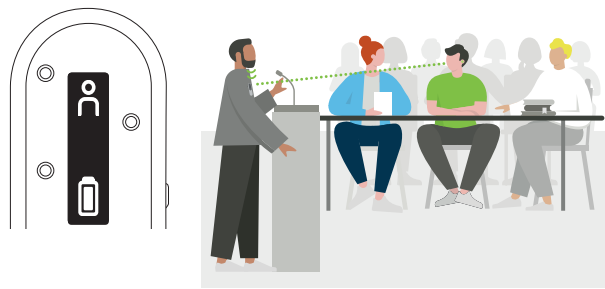
5

Pointing | In der Hand | Dans la main | In de hand



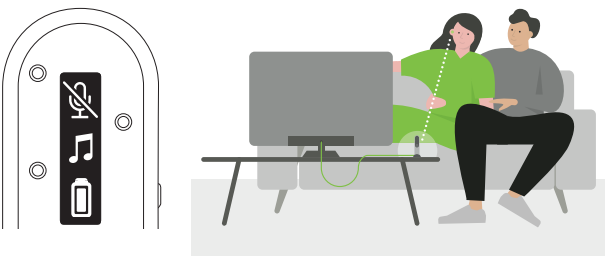
6

Presenter | Sprecher | Locuteur | Spreker



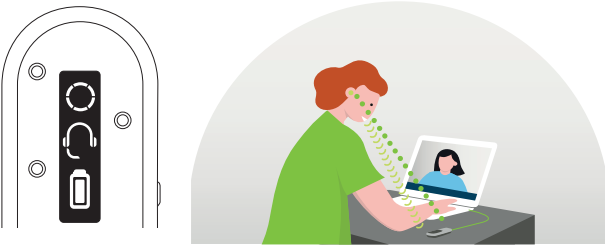
7

TV | Fernsehen | TV | Televisie

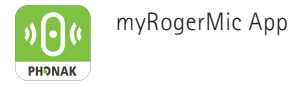


8

Online call | Internet Anruf | Appel en ligne | Online bellen



i



The Apple App Store logo is a trademark of Apple Inc. The Google Play store logo is a trademark of Google LLC.

For further information, please refer to the User Guide. | Weitere Informationen zur Anwendung finden Sie in der Gebrauchsanweisung. | Pour plus d'informations, veuillez vous référer aux instructions d'utilisation. | In de gebruiksaanwijzing vindt u meer gedetailleerde informatie.

www.phonak.com/roger-on

Model:
Roger On 3

Manufacturer:
Sonova Communications AG
Herrenschwandweg 4
CH-3280 Murten
Switzerland
www.phonak.com



029-3368-49/V1.00/2024-03/na © 2024 Sonova AG All rights reserved



PHONAK
life is on

A Sonova brand

Roger On™

Quick setup guide | Schnellstartanleitung
Guide d'installation rapide | Snel aan de slag

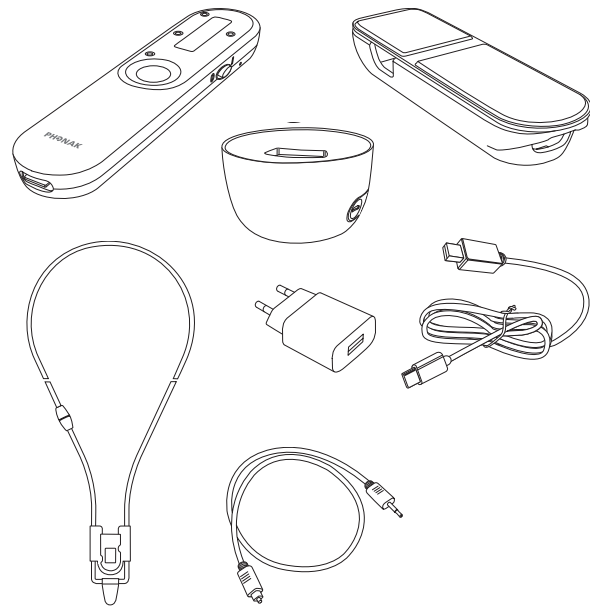
roger





i

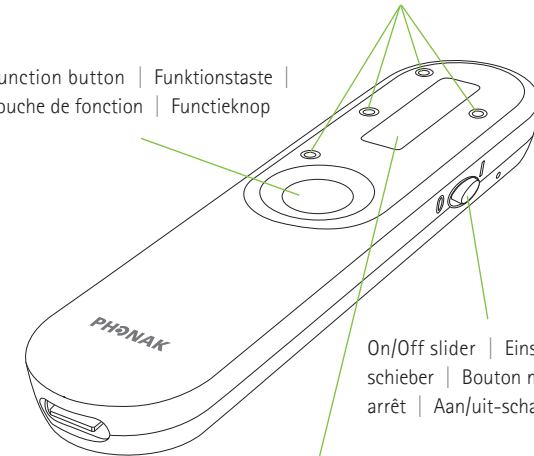
Content | Inhalt | Contenu | Inhoud



i

4 microphones | 4 Mikrofone |
4 microphones | 4 microfoons

Function button | Funktionstaste |
Touche de fonction | Functieknop

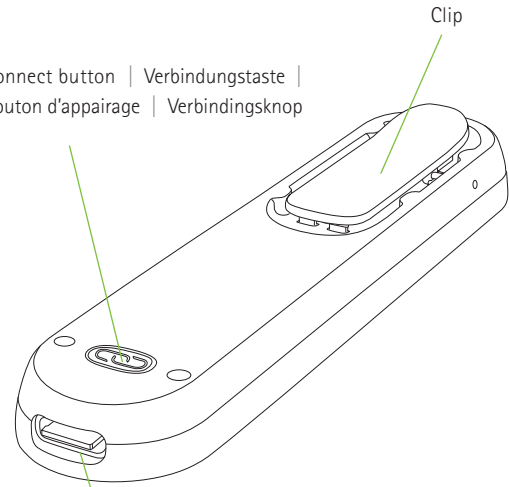


On/Off slider | Einschalt-
schieber | Bouton marche/
arrêt | Aan/uit-schakelaar

Display | Anzeige | Écran | Scherm

i

Connect button | Verbindungstaste |
Bouton d'appairage | Verbindingsknop



Clip

Charging input | Ladeanschluss |
Prise de recharge | Charging input

i

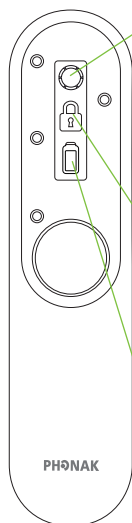


Table | Tisch | Table | Tafel

Pointing | In der Hand | Dans la main |
In de hand

Presenter | Sprecher | Locuteur | Spreker

Mute | Stumm | Muet | Dempen

Automatic | Automatisch | Automatique

Locked | Gesichert | Barré | Op slot

Audio

Call | Anruf | Appel | Telefoongesprek

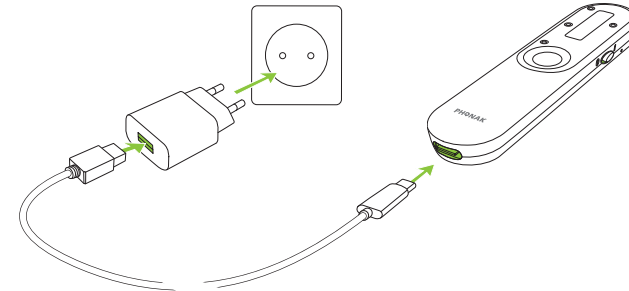
~8h

~4h

Charge! | Laden! | Chargez! | Laden!

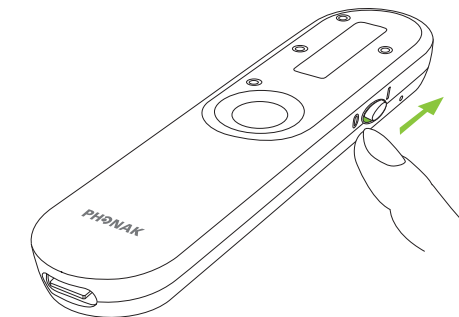
1

Charging | Aufladen | Charger | Laden



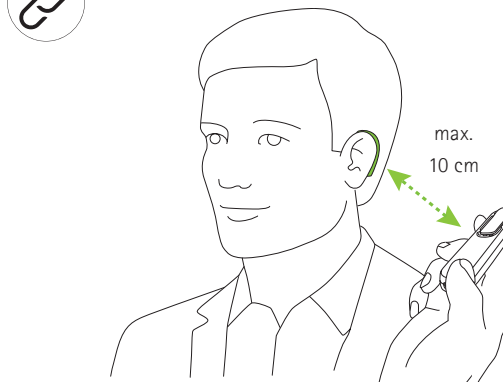
2

Switching on | Einschalten | Mettre en marche |
Inschakelen

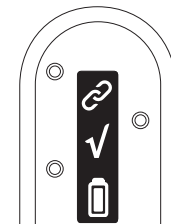


3

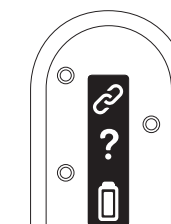
Connecting | Verbinden | Connecter | Verbinden



max.
10 cm



Done | Erledigt |
Terminé | Gedaan



Go closer | Gehen Sie näher heran |
Va plus près | Kom dichterbij