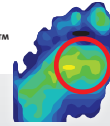


PegAssist™

PQ, PTQ, & PW Series Off-loading Insoles

Without PegAssist™



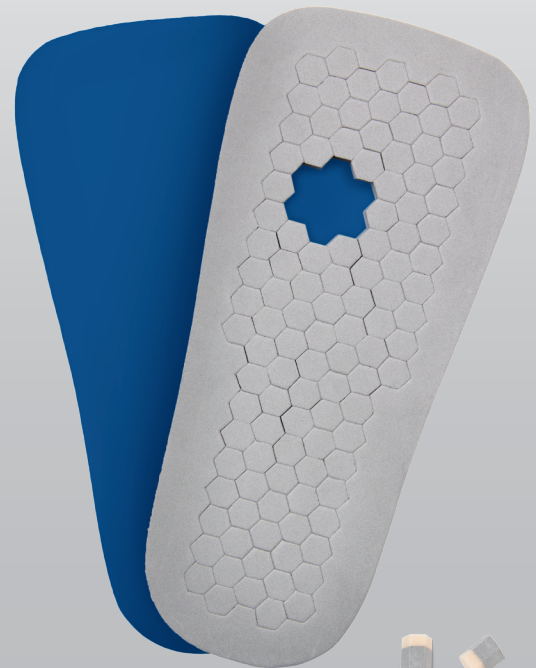
With PegAssist™



PQ Series Off-loading Insole



PTQ Series Off-loading Insole



PW Series Off-loading Insole

*Stabilizer board not shown

The DARCO PegAssist™ Off-loading Insoles feature a multi-indication removable peg chassis that effectively off-loads the plantar aspect of the foot after surgery or when wounds are present.





PQ Series Off-loading Insole



PTQ Series Off-loading Insole



PW Series Off-loading Insole

PegAssist™ Features and Benefits:

- › **Removable pegs** allow for localized off-loading of wounds and ulcerations of the foot.
- › **Pressure is reduced by as much as 60%** while allowing patient to remain ambulatory.
- › Each insole has a 15mm combination Plastazote® and Multi-Foam base with a 3mm Poron® cover.
- › **PORON® Cushioning** cover eliminates the incidence of ring edema and edge abrasion.
- › **Stabilizer board included** to maintain product integrity.

PQ Series Insole



HeelWedge™



OrthoWedge®



APB™



SlimLine

The PQ Series PegAssist™ is designed to fit the HeelWedge™, OrthoWedge®, APB™ and SlimLine.

PTQ Series Insole



MedSurg™

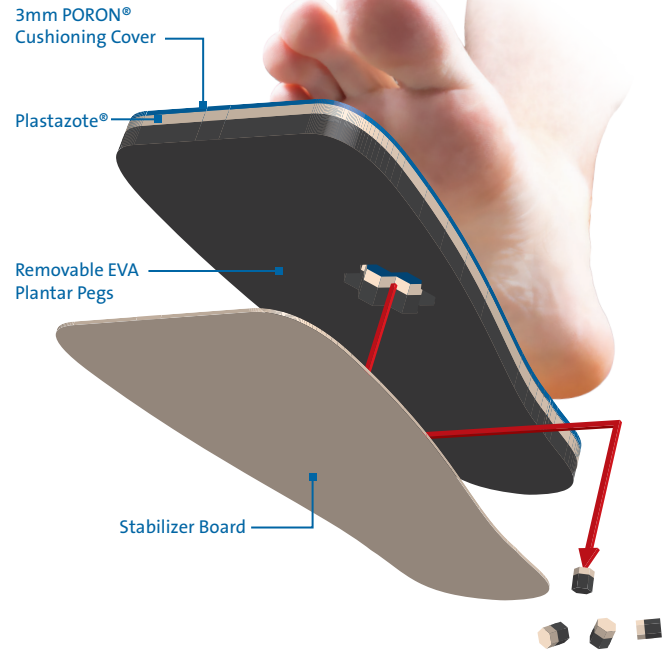
The PTQ Series PegAssist™ Insole is designed to fit the DARCO Square-Toe MedSurg™ Shoe.

PW Series Insole



Walkers

The PW Series PegAssist™ is designed to fit most standard walkers. Affixed to the stabilizer board is a low profile molded hook strip that adheres to the walker liner to prevent shifting while walking.



PQ Series PegAssist™

Size:	Women:	Men:	Product Code
XS	3 - 5.5	-	PQ0
S	6 - 7.5	5 - 6.5	PQ1
M	8 - 9	7 - 8	PQ2
L	9.5 - 11	8.5 - 10	PQ3
XL	11.5 - 13	10.5 - 12.5	PQ4

PTQ Series PegAssist™

Size:	Women:	Men:	Product Code	
			Women:	Men:
S	4 - 6	6 - 8	PTQW1	PTQM1
M	6.5 - 8	8.5 - 10	PTQW2	PTQM2
L	8.5 - 10	10.5 - 12	PTQW3	PTQM3
XL	-	12.5 - 14	-	PTQM4

PW Series PegAssist™

Size:	Women:	Men:	Product Codes:
XS	3.5 - 6	-	PW0
S	6.5 - 9	5 - 7.5	PW1
M	9.5 - 12	8 - 10.5	PW2
L	12.5+	11 - 13	PW3
XL	-	13.5+	PW4

Available through:

