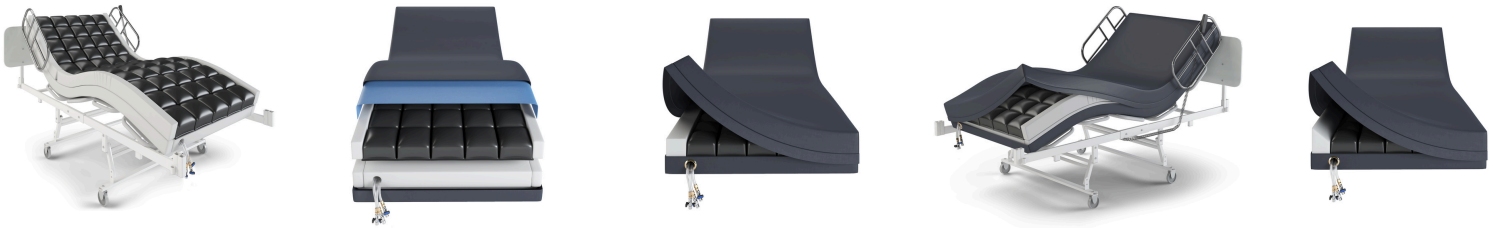


the  
united  
mattress



## Discover the dramatic results of **Floating**



**A NEW ERA IN MEDICAL MATTRESS TECHNOLOGY**

# Product Brochure

- advanced product design
- unconventional technology
- extreme patient comfort
- wound care and healing



- **unmatched state survey results**

l a y      f l o a t      h e a l

# The science behind The United Mattress product is completely different from traditional air pump medical mattress technology

## The United Mattress

Using a combination of dynamic air cells, a non-shearing layer and 4", 4 lb memory foam allows for dynamic weight distribution, an optimal healing environment and patients feeling **weightless**. Our technology is designed for treating AND healing stage 1-4 pressure injuries and wound care with statistically-proven and unrivaled healing results.

The United Mattress does NOT REQUIRE an electric blower or pump, eliminating all traditional air mattress issues, high utility bills and power-outage concerns.



- Combination of memory foam and air cells allow for patient's weight to be equally distributed
- No electricity or electric pump needed
- Stays below 32 mm of Hg
- CLINICALLY PROVEN to heal stage 1-4 wounds
- Able to control the head, middle and foot section independently of one another
- NO NEED for wedges or heel boots
- Sturdy perimeter on all models to allow for easy patient transfer and movement.

**Consistent blood flow heals AND PREVENTS wounds**



99.9% Customer Satisfaction Rating  
99.9% Customer Quality Rating

## How does the technology work?

The United Mattress system is designed to create the optimal healing environment for stage I-4 pressure injuries with unmatched comfort levels.

The mattress promotes the healing of existing wounds while minimizing the risk of future wounds by UNITING FOUR KEY ELEMENTS:

- 4", 4 lb memory foam as the bottom layer
- Dynamic and responsive AIR CELLS (3)
- A non-shearing layer
- Natural air flow

The United Mattress products do **NOT** require an electric blower or pump. This eliminates unnecessary rattling and noise. The United Mattress system **distributes a patient's body weight to create an optimal healing environment.** It does not increase heat or moisture.

The top layer is non-permeable, so there is no fluid drainage into the mattress. The bottom water proof layer uses rubber gripping material so straps are not needed. And because they require no electricity, our mattresses are completely portable and worries of power outages are non-existent.

## Product Information

Item	Description	Max Weight
UM1001	Std 36" x 80"	500 lbs
UM2001	Bariatric 42" x 80"	750 lbs
UM3001	Scoop 36" x 80"	500 lbs
UM 4001	Bariatric Scoop 42"x80"	750 lbs

**NOTE:** All items can be made extra long at 84"

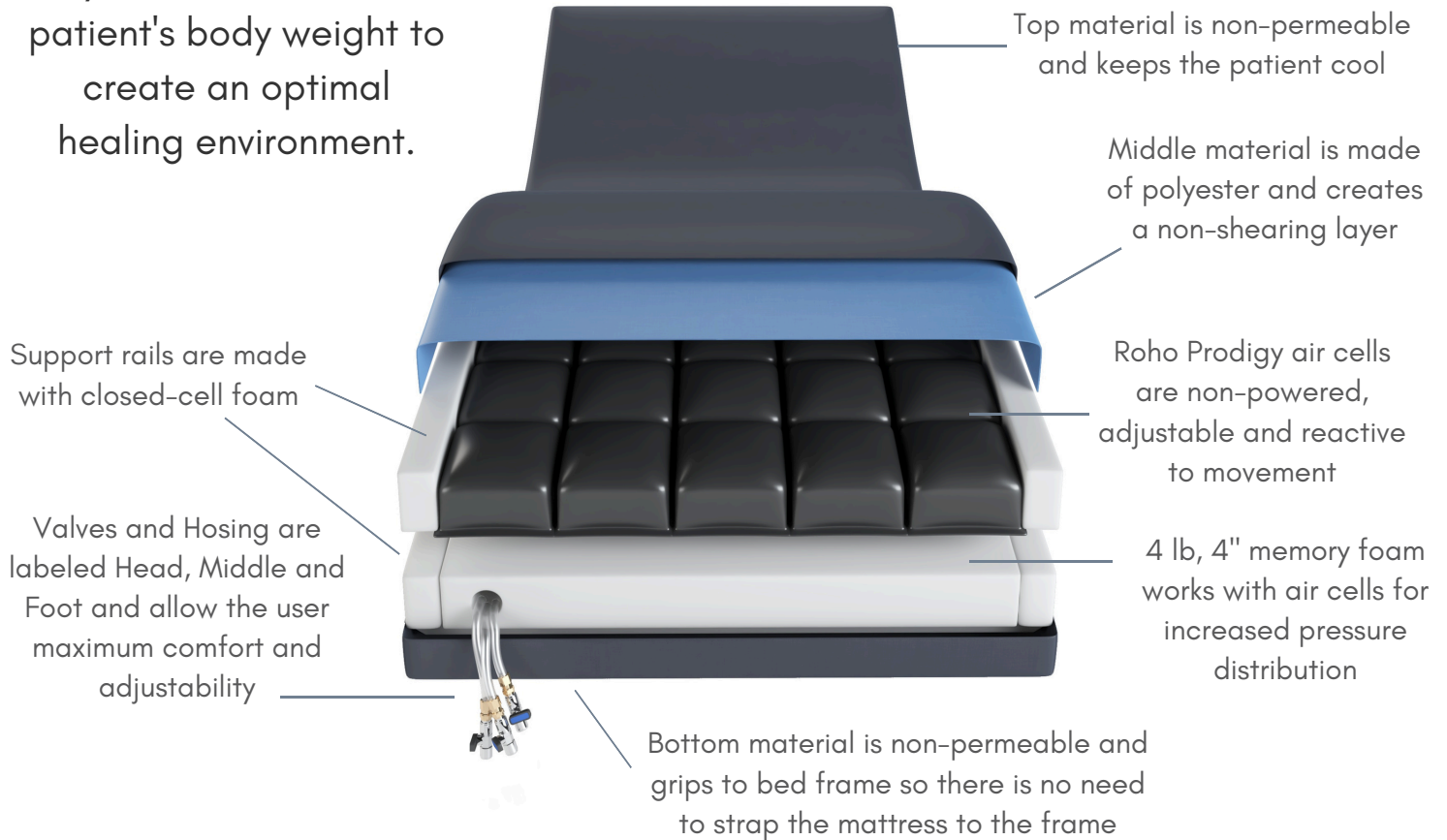
## Testimonial

*Gallatin, TN*

"We love these mattresses! They **heal patients** who were not able to heal before and the patients say they are **SO COMFORTABLE!**"

# The Floating Effect

The United Mattress system distributes a patient's body weight to create an optimal healing environment.



United Mattress products are made in Lewisburg, TN and have a 3-year warranty. United Mattress products all have unmatched customer satisfaction and quality ratings. **Patients are happy and our customers are happy.**



# Lipscomb University

## Clinical Study Data

Numbers don't lie. When we say The United Mattress technology can PREVENT and HEAL stage 1-4 wounds, we are serious. And we have the numbers to back it up. As you'll see in this data, % change numbers show how dramatically wound sizes decreased and healed. Because patients feel as though they are weightless on our mattresses, they therefore, experience superior pressure distribution, and an optimal healing environment is created and **maintained**. This is when rapid wound healing can finally begin.

Patient	Wound Location	No. of Days	1st Measurement	2nd Measurement	% Change
1	Back Lower	15	5.04	0.672	-86.67%
2	Back Middle	66	2.4	3.84	60.00%
3	Buttock	37	41.44	0	-100%
4	Buttock	6	0.78	0.78	0.00%
5	Buttock	79	1.6	0.72	-55.00%
6	Buttock	24	0.048	0	-100.00%
7	Buttock	10	0.84	0.84	0.00%
8	Coccyx	10	0.36	0.32	-11.11%
9	Elbow	7	0.672	0.672	0%
10	Heel	27	7.052	5.712	-19.00%
11	Hip	58	23.4	0.16	-99.32%
12	Hip	92	0.864	0.8736	1.11%
13	Hip	65	0.448	0	-100.00%
14	Knee	35	0.4	0.168	-58.00%
15	Laka	43	0.864	0.864	0%
16	Peri Rectal	219	210.924	0.72	-99.66%
17	Peri Rectla	17	132.16	132.16	0.00%
18	Sacrum	70	0.12	0.06	-50.00%
19	Sacrum	822	3.876	0.88	-77.30%
20	Sacrum	118	45.36	4.992	-88.99%
21	Sacrum	7	5.04	5.04	0%
22	Sacrum	125	34.816	4.48	-87.13%
23	Sacrum	34	0.54	0.048	-91.11%
24	Sacrum	58	0.08	0	-100.00%
<b>Totals</b>		<b>2044</b>			<b>-48.42%</b>
<b>Total Wounds</b>		<b>24</b>			
<b>Average Days</b>		<b>85.167</b>			

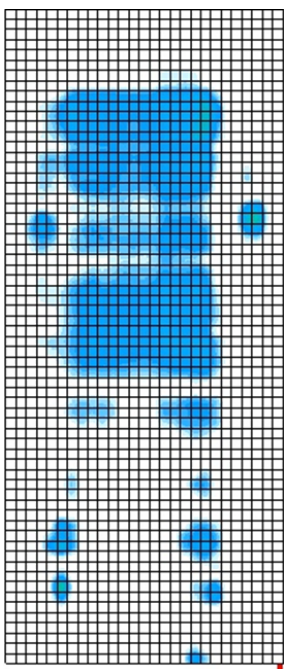
**Data from the #1 low air loss competitor shows wound sizes increased by 501.02%** in our study vs. showing a decrease with their mattress technology.

Information on this study is available upon request.

# Natural air flow eliminates heat build up, moisture and pressure



## The science behind The United Mattress product is completely different from traditional air-pump medical mattress technology



The United Mattress vs.  
True Low Air Loss Mattress Technology

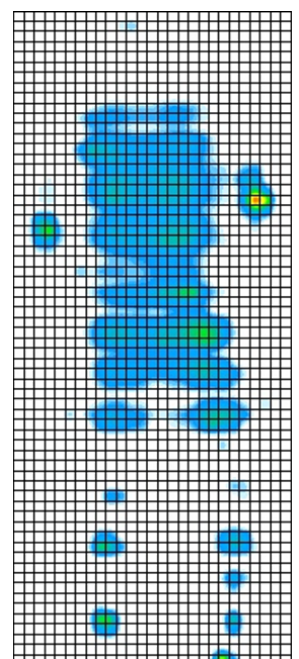
**The United Mattress**



**True Low Air Loss Mattress**



Above is the same patient (male 6' weighing 180 pounds) sitting at an incline of 45 degrees in a hospital bed. While the average reading on the United Mattress is 8.7 mm of Hg, the True Low Air Loss, has an average reading of 13.5mm of Hg.



# The United Air 2



## Product Information

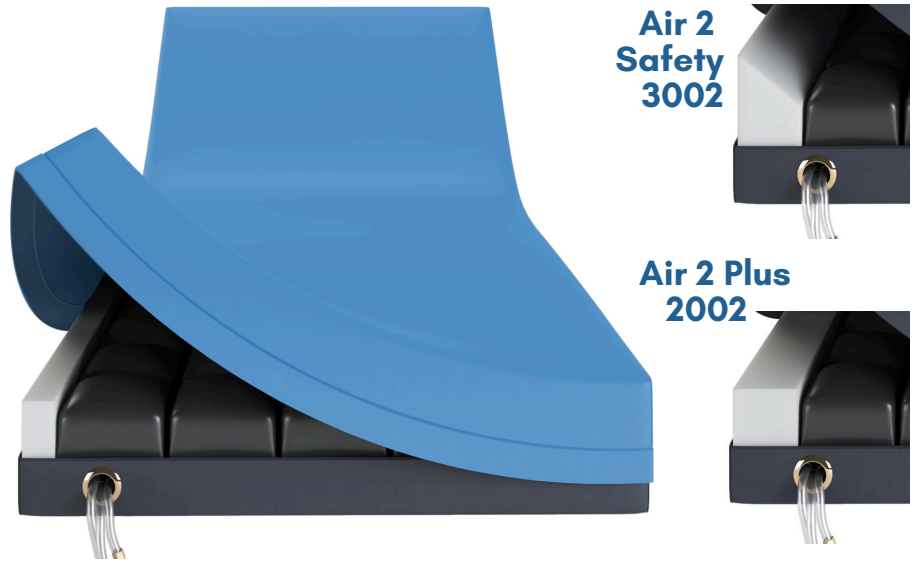
We are excited to announce our newest product line; The United - Air2 series! The Air2 is made to be a cost effective mattress but also prevent and heal stage 1 -4 pressure injuries. This mattress uses 2lb, 4" memory foam and provides pressure mapping at 12.6 mm hg which is still below 32 mm hg to heal pressure injuries. The Air2 can replace any Alternating Pressure mattress! The Air2 top material is non-permeable and the bottom material is non slip and fluid proof. No Need for that Noisy Electric Pump!

Item	Description	Max Weight
UM1002	Std 36" x 80"	500 lbs
UM2002	Bariatric 42" x 80"	750 lbs
UM3002	Scoop 36" x 80"	500 lbs
UM4002	48" Bariatric 48"x80"	750 lbs

**NOTE:** All items can be made extra long at 84"

The Air 2 mattress will accompany a traditional size hospital bed for the patient's care. There is a small indentation near the middle section to allow for the head of the mattress and bed to be raised effortlessly. There are 3 valves for the head, middle and foot section to adjust the pressure of the mattress for the comfort of the patient.

**36" wide, 80" long, 9" high**  
**500 lb weight capacity**  
**Available in XL 84"**



## Floating Technology

The United Mattress system distributes a patient's body weight to create an **optimal healing environment.**

Support rails allow for easy patient transfer without the ballooning effect

Valves and Hosing are labeled Head, Middle and Foot and allow the user maximum comfort and adjustability

Bottom material is non-permeable and grips to bed frame so there is no need to strap the mattress to the frame

Top material is non-permeable and keeps the patient cool

Middle material is made of polyester and creates a non-shearing layer

Roho Prodigy air cells are non-powered, adjustable and reactive to movement

2 lb, 4" memory foam works with air cells for increased pressure distribution



# CUSTOMER TESTIMONIALS



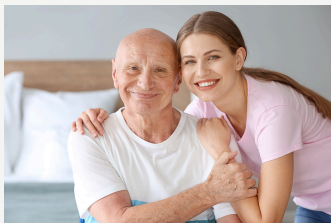
## Administrator, Georgia

"One night, a terrible storm came through and we lost power. All our air mattresses went flat and patients needed to be moved. It was awful. Luckily, we had purchased a few United Mattresses and those patients did not need to be moved. The next day, I ordered 20 more. Losing power is too stressful with air mattresses, and the thought of having to move patients of all sizes like that ever again? No."



## Nursing Home in Columbia, TN

A patient had been on a Low Air Loss Mattress for a year and a half. His injuries made his body contract and he would lay in a ball most days and constantly develop wounds. He was placed on a United Mattress and was immediately more comfortable. Within 6 weeks, the patient began to significantly heal saying, "I will give you every penny I have, but please do not take this mattress away from me."



## Possible Amputation

Nursing home facility in Madisonville: A patient had been in the facility for a few weeks with an existing wound he'd had for years, which became even worse and was potential cause for amputation. The facility used a United Mattress as a last resort and within 10 days the Dr. changed his mind and the patient has continued to heal.

