

# Brondell®

## Nebia® Yuba™ 5-Setting Handshower with HaloNetic™ Double Docking System

Douchette à 5 réglages avec  
système d'amarrage double HaloNetic

Ducha de mano de 5 ajustes con  
sistema de doble acoplamiento  
HaloNetic

### Quick Start Installation Guide Guide d'installation et de démarrage rapide Guía de instalación de inicio rápido

Model/Modèle/Modelo: NE80-HSHN

#### Installation:

1. Unscrew existing showerhead by turning it counterclockwise. If necessary, use an adjustable wrench.
2. Confirm the washer (black donut) is in the cradle's shower ball.
3. Thread the cradle's shower ball connection onto the shower arm, and tighten clockwise by hand.

**NOTE:** Be careful not to overtighten or cross thread to avoid damaging the connections.

4. Confirm the washers (black donuts) are placed in both ends of the hose. Connect hose to cradle and handshower and tighten connections by hand.

**CAUTION:** Risk of personal injury! If the water temperature is set too high, scalding will occur. The water temperature should never be set above 120°F (49°C). Do not use this Brondell low-flow product with a shower valve that allows the water temperature to become too hot.

5. Attach the magnet to the dock. Tilt the handle upwards to remove from the dock.

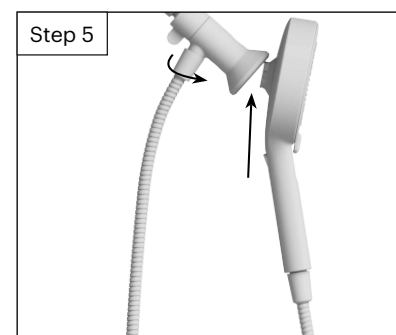
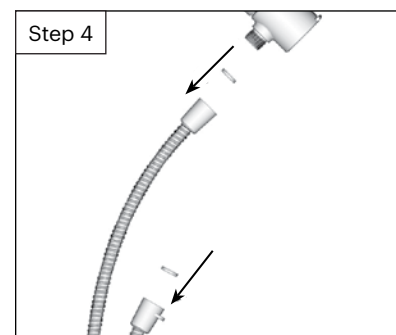
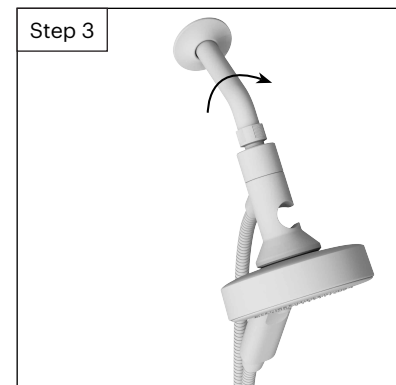
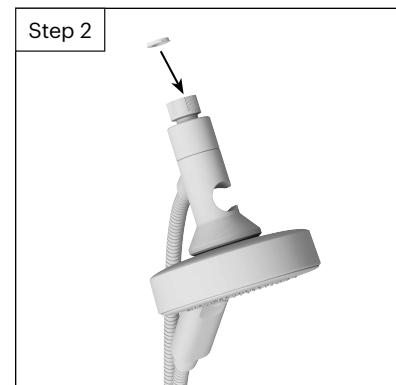
#### Switching Spray Settings:

To switch between Nebia Yuba's 4 spray settings, rotate the handshower face to the left or right.

#### Using Pause Mode:

1. Nebia Yuba has a Pause Mode button on the back of the handle to help save water while lathering, rinsing, etc.
2. To turn on Pause Mode, press the button to the upward position.
3. To resume showering, press the button to the downward position.

**NOTE:** Each Pause Mode is distinct and pressure and pattern may vary.



#### WARNING:

If you have a pacemaker or other implantable medical device, please note that this handheld shower product contains neodymium magnets ranging in strength up to .41T. In certain conditions, some magnets may interfere with the operation of pacemakers or other implantable medical devices. Please consult with your device manufacturer and or physician for specific guidance.

#### Limited Lifetime Warranty

Brondell products are backed by some of the most comprehensive warranties in the industry. Brondell warrants that our Brondell Nebia Shower Products (excluding consumable items and Filtered Showerhead and Compact Shower Filter) shall be free from defects in material and workmanship under normal use and service.

#### Brondell Nebia Shower Products Residential Limited Lifetime Warranty:

- Brondell will provide free of charge the necessary parts to put the shower products back in good working condition.
- Brondell will replace free of charge any part or finish that proves defective in material and manufacturing workmanship, under normal installation, use and service.
- Valid proof of purchase from the original consumer purchaser must be provided with any warranty claims.
- Brondell will provide parts free of charge, but the customer is responsible for any associated shipping costs to receive the parts.

#### Brondell Nebia Shower Products Commercial Warranty:

The warranty period is 5 years from original purchase date for all Brondell Nebia Shower products.

#### Exclusions and Limitations

1. BRONDELL warrants its products to be free from manufacturing defects under normal use and service. This warranty is extended only to the ORIGINAL PURCHASER.
2. BRONDELL's obligations under this warranty are limited to repairs or replacement, at BRONDELL's option, of products or parts found to be defective, provided that such products were properly installed and used in accordance with instructions and using genuine Brondell parts. BRONDELL reserves the right to make such inspections as may be necessary to determine the cause of the defect.
3. BRONDELL is not responsible for the cost of removal, return (shipping) and/or re-installation of products. This warranty does NOT apply to:
  - Damage or loss which occurs during shipment.
  - Damage or loss sustained through any natural or man-made causes beyond the control of BRONDELL, including but not limited to fire, earthquake, floods, etc.

## Brondell®

Feels better already.

#24NE80-HSHN\_WEB\_0724

#### Limited Lifetime Warranty (cont.)

- Damage or loss resulting from sediments or foreign matter contained in a water system.
- Damage or loss resulting from negligent or improper installation including installation of a unit in a harsh or hazardous environment.
- Damage or loss resulting from removal, improper repair, modification of the product, or improper maintenance including damage caused by chlorine or chlorine-related products.
- This Warranty does not cover Brondell Filtered Showerhead or Compact Shower Filter Products

4. This warranty gives you specific legal rights. You may have other rights which vary from state to state. THIS WRITTEN WARRANTY IS THE ONLY WARRANTY MADE BY BRONDELL. REPAIR OR REPLACEMENT AS PROVIDED UNDER THIS WARRANTY SHALL BE THE EXCLUSIVE REMEDY AVAILABLE TO THE PURCHASER. BRONDELL SHALL NOT BE RESPONSIBLE FOR LOSS OF USE OF THE PRODUCT OR FOR OTHER INCIDENTAL, SPECIAL, FOR CONSEQUENTIAL DAMAGES OR EXPENSES INCURRED BY THE PURCHASER OR FOR LABOR OR OTHER COSTS DUE TO INSTALLATION OR REMOVAL OR COSTS OF REPAIRS BY OTHERS, OR FOR ANY OTHER EXPENSE NOT SPECIFICALLY STATED ABOVE. EXCEPT TO THE EXTENT PROHIBITED BY APPLICABLE LAW, ANY IMPLIED WARRANTIES, INCLUDING THAT OF MERCHANTABILITY, ARE EXPRESSLY LIMITED TO THE DURATION OF THIS WARRANTY. SOME STATES DO NOT ALLOW LIMITATIONS, SO THE ABOVE LIMITATION AND EXCLUSION MAY NOT APPLY TO YOU.

#### How to Obtain Service

To initiate a Brondell warranty claim, please visit Brondell.com and complete our online support request form or call our Customer Support team for assistance at 1-800-842-8888. Our dedicated Customer Support specialists will work with you to troubleshoot the issue, and depending on the results, will provide you with a Return Merchandise Authorization (RMA) number and a pre-paid shipping label, if applicable, for you to ship your Brondell product to our Service Center.

When returning your item to our Service Center, please ensure to include the RMA number and a copy of the original receipt as proof of purchase for proper identification and processing.