



Nebia® Yuba™

5-Setting Handshower

Douchette à 5 réglages

Ducha de mano de 5 funciones

Quick Start Installation Guide

Guide d'installation et de démarrage rapide

Guía de instalación de inicio rápido

Model/Modèle/Modelo: NE80-HS

Installation:

1. Unscrew existing showerhead by turning it counterclockwise. If necessary, use an adjustable wrench.
2. Confirm the washer (black donut) is in the cradle's shower ball.
3. Thread the cradle's shower ball connection onto the shower arm, and tighten clockwise by hand.

NOTE: Be careful not to overtighten or cross thread to avoid damaging the connections.

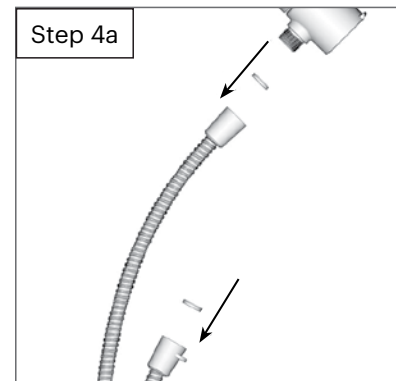
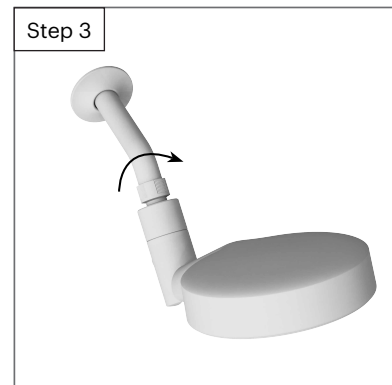
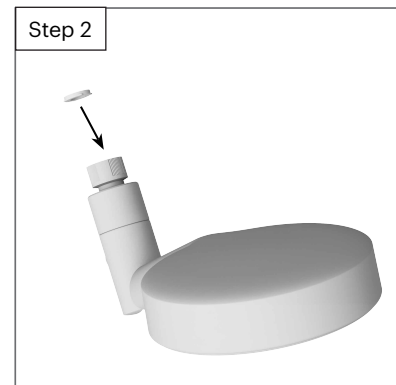
4. a. Confirm the washers (black donuts) are placed in both ends of the hose.
b. Connect hose to cradle and handshower and tighten connections by hand.

CAUTION: Risk of personal injury! If the water temperature is set too high, scalding will occur. The water temperature should never be set above 120°F (49°C). Do not use this Brondell low-flow product with a shower valve that allows the water temperature to become too hot.

How to Use Pause Modes:

Nebia Yuba includes 2 convenient pause modes to help save water while lathering, shaving, etc.

To activate, rotate the face of the showerhead all the way to the left or the right and water flow will be reduced. Please note that each pause mode is distinct, and pressure and pattern will vary.



Limited Lifetime Warranty

Brondell products are backed by some of the most comprehensive warranties in the industry. Brondell warrants that our Brondell Nebia Shower Products (excluding consumable items and Filtered Showerhead and Compact Shower Filter) shall be free from defects in material and workmanship under normal use and service.

Brondell Nebia Shower Products Residential Limited Lifetime Warranty:

- Brondell will provide free of charge the necessary parts to put the shower products back in good working condition.
- Brondell will replace free of charge any part or finish that proves defective in material and manufacturing workmanship, under normal installation, use and service.
- Valid proof of purchase from the original consumer purchaser must be provided with any warranty claims.
- Brondell will provide parts free of charge, but the customer is responsible for any associated shipping costs to receive the parts.

Brondell Nebia Shower Products Commercial Warranty:

The warranty period is 5 years from original purchase date for all Brondell Nebia Shower products.

Exclusions and Limitations

1. BRONDELL warrants its products to be free from manufacturing defects under normal use and service. This warranty is extended only to the ORIGINAL PURCHASER.
 2. BRONDELL's obligations under this warranty are limited to repairs or replacement, at BRONDELL's option, of products or parts found to be defective, provided that such products were properly installed and used in accordance with instructions and using genuine Brondell parts. BRONDELL reserves the right to make such inspections as may be necessary to determine the cause of the defect.
 3. BRONDELL is not responsible for the cost of removal, return (shipping) and/or re-installation of products. This warranty does NOT apply to:
 - Damage or loss which occurs during shipment.
 - Damage or loss sustained through any natural or man-made causes beyond the control of BRONDELL, including but not limited to fire, earthquake, floods, etc.
 - Damage or loss resulting from sediments or foreign matter contained in a water system.
 - Damage or loss resulting from negligent or improper installation including installation of a unit in a harsh or hazardous environment.
 - Damage or loss resulting from removal, improper repair, modification of the product, or improper maintenance including damage caused by chlorine or chlorine-related products.
- This Warranty does not cover Brondell Filtered Showerhead or Compact Shower Filter Products



Feels better already.

#24NE80-HS_WEB_0724