

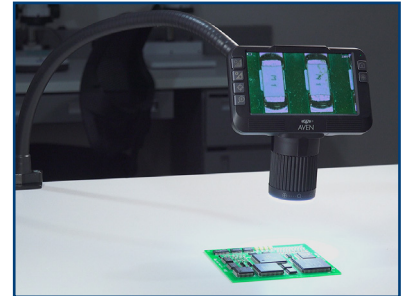


Tools for  
Advancing  
Innovation

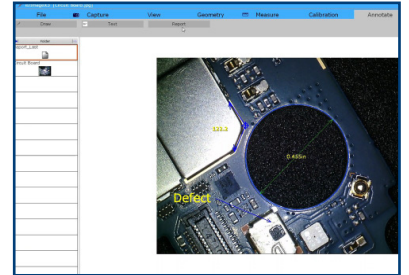
ezImage Software Included	8x-25x Magnification	5" High Resolution LED Screen	Micro SD Card Slot
Measure, Share and Annotate	Adjustable LEDs & Focus Wheel	1080P Full HD	Process, Save & Share Images



Crystal Clear 5" Screen



EzImage X3 Download Included



# Mighty Scope ClearVue

All-In-One Digital Microscope  
w/ Flex Arm Stand with Magnetic Base

Mighty Scope ClearVue has a built in 5" high resolution LED screen and offers a magnification range of 8x -25x. The included rechargeable battery allows you to operate the microscope without a power supply for hours thus making it suitable for field projects. You can also connect this microscope to an external monitor via an HDMI output for viewing images on a larger screen. Images can be saved on the included Micro SD card. Can also be mounted onto a variety of stands to suit your application. Includes Aven's 18" FlexArm Stand with magnetic base. This arm easily bends and stays put in any position. Tilt, rotate, and position as needed.

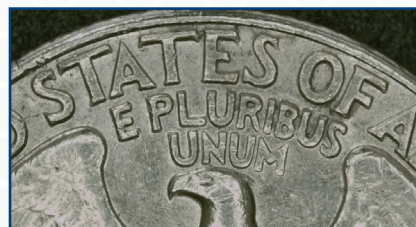
## Features:

- Compact All-in-one system
- 1080p Full HD Imaging at 60 FPS
- HDMI Output for additional monitor viewing
- ezImageX3 software download included
- 5" built-in HD screen
- Save high resolution image/video files directly to microSD card
- Enhances productivity - eliminates eye strain and body fatigue
- 1080p Full HD Output

**Aven's Dual Gooseneck LED Task Light**

Recommended for improved imaging & color control

Sold Separately #26537



Mighty Scope ClearVue, Flex Arm & Magnetic Base	
Item #	26700-220-558
Magnification	8x-25x   40x-120x (on 24" Monitor)
Effective Pixels	1920(H) x 1080(V)
Image Sensor	2M CMOS Sensor
Working Dist.	45mm-95mm
Interface	Mini USB - Type A / HDMI
PC Software	EZImage X3
Illumination	Integrated Ring Light
Package Contents	Mighty Scope ClearVue digital microscope, USB cable, Power supply, Snap shot remote control, 32gb MicroSD Card, 2600mAh 18650 Li-ion battery, User guide, Flex Arm, Magnetic Base, Free ezImageX3 software download

# Mighty Scope ClearVue

	<p><b>Mighty Scope ClearVue on Spring Balanced Arm w/ Table Clamp</b> #26700-220-559</p> <p>This arm can be raised, lowered, and tilted as needed. The swivel motion makes it easy to move the ClearVue out of the way when not in use.</p> <ul style="list-style-type: none"> <li>• Fully Covered 31" Spring Balanced Arm</li> <li>• Adjustable Tension Knob</li> </ul>
	<p><b>Mighty Scope ClearVue on Flex Arm Stand w/ Table Clamp</b> #26700-220-557</p> <p>This arm easily bends and stays put in any position. Tilt, rotate, and position as needed</p> <ul style="list-style-type: none"> <li>• 18" Steady Mobile Flex Arm</li> <li>• 360° Swivel Head</li> <li>• 2" Table Clamp</li> </ul>
	<p><b>Mighty Scope ClearVue on Flex Arm Stand w/ Magnetic Base</b> #26700-220-558</p> <p>This arm easily bends and stays put in any position. Tilt, rotate, and position as needed</p> <ul style="list-style-type: none"> <li>• 18" Steady Mobile Flex Arm</li> <li>• 360° Swivel Head</li> <li>• 3" Magnetic Base</li> </ul>
	<p><b>Mighty Scope ClearVue on Post Stand w/ Gliding Stage XYR</b> #26700-220-479</p> <ul style="list-style-type: none"> <li>• 10" Post w/ 7"x8.5" Metal Base</li> <li>• Gliding Stage offers smooth vertical and horizontal movement w/ built in rotating stage, compact design, &amp; metal rack and pinion construction</li> </ul>
	<p><b>Compact Gliding Stage XYR</b> #26800B-479</p> <ul style="list-style-type: none"> <li>• Smooth vertical and horizontal movement w/ Built-in rotating stage</li> <li>• Compact design (5.3 x 4.7 x 3.6 inch base)</li> <li>• Metal rack and pinion construction</li> <li>• Designed to be used with optical and digital microscope systems</li> </ul>
	<p><b>Dual Gooseneck LED Task Light With Magnetic Base And 4" Table Clamp</b> #26537</p> <ul style="list-style-type: none"> <li>• Smooth vertical and horizontal movement w/ Built-in rotating stage</li> <li>• Powerful, long lasting ultra-bright LEDs provide 500lm of flicker and ghost-free illumination</li> <li>• On/Off button toggles between the lamps for single-lamp or dual-lamp lighting</li> <li>• Can be powered 3 ways: with included power supply, 3 AA batteries, or with a rechargeable lithium ion battery</li> </ul>