

Metallophone Installation

STEP: 1

Using eight (8) M8 set screws connect Glockenspiel top to post.



STEP: 2

Attach mallets to post using V-bracket supplied and two (2) M6 set screws for each bracket.

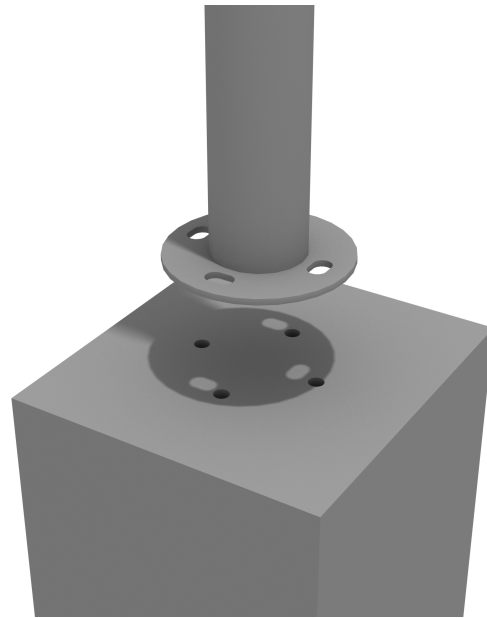


Created By: Kelly D.
Date Modified: 12/01/2020

Metallophone Installation

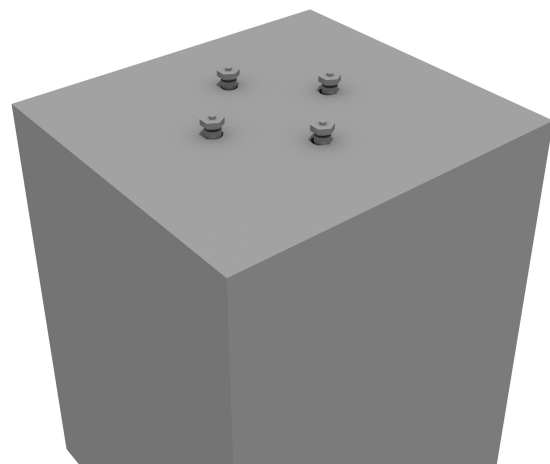
STEP: 3

Drill four (4) holes into the concrete 1/2 inch deeper than the anchor will penetrate. Make sure that the minimum embedment requirements are met. Clean out the holes.



STEP: 4

Hammer the bottom of the wedge anchor into the concrete. Make sure this is a tight fit.

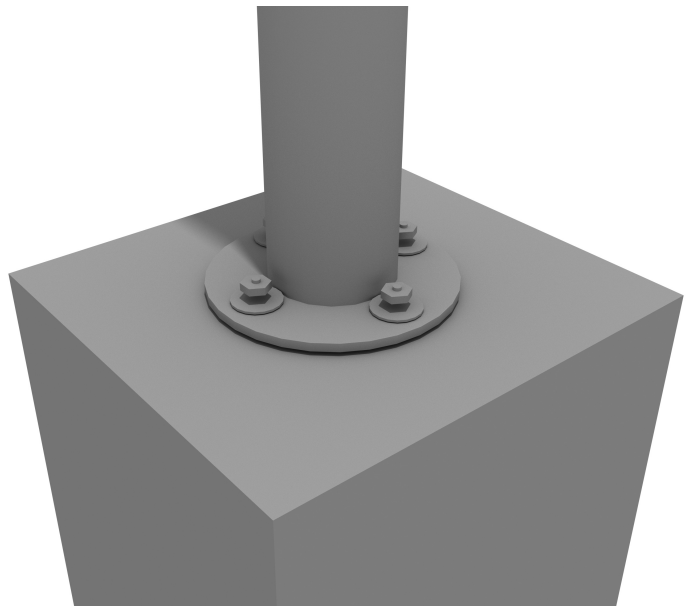


Created By: Kelly D.
Date Modified: 12/01/2020

Metallophone Installation

STEP: 5

Using four (4) lock nuts and four (4) washers, tighten the nuts into the previously hammered in anchors.



Created By: Kelly D.
Date Modified: 12/01/2020