

ARJOHUNTLEIGH

GETINGE GROUP

MAXI MOVE

A MOBILE PASSIVE LIFTER FOR
DEMANDING CARE ENVIRONMENTS



...with people in mind

A PROVEN ASSET FOR ALL CARE ENVIRONMENTS



Maxi Move™, the most complete mobile lifter system available, is a proven success in care environments around the world. ArjoHuntleigh has now enhanced the *Maxi Move* to make it an even greater asset for healthcare settings of all types.

The fundamental aim of the *Maxi Move* is to be “best on basics”. Using the *Maxi Move* you gain a safer, more efficient solution for the basic tasks of patient handling – lifting and repositioning. The system offers two unique features – SVS (Stable Vertical System) and Powered DPS (Dynamic Positioning System), which together provide the safest, most comfortable basis for complete transfers – from the initial lift through to effortless fine-tuning of the patient’s posture.

This battery-powered passive sling lifter allows a single caregiver to safely manage a wide range of patient handling routines. With unrivalled flexibility, stability and reliability, the *Maxi Move* is the best-equipped lifter for intensive use in demanding care environments.

FLEXIBILITY

- The Combi attachment enables smooth switching between different spreader bars
- Choose the optimum patient interface from the widest spreader bar range in the market
- Select the appropriate sling from the most comprehensive range available

FLEXIBILITY for the diverse challenges of everyday care, see page 5.

STABILITY

- A vertical lifting action, SVS (Stable Vertical System), means safer routines
- DPS spreader bars help to prevent the sling from swinging during transfers
- Excellent stability allows the lifting of heavy patients weighing up to 500 lbs (227 kg)

STABILITY for safe, comfortable transfers, see page 6.

RELIABILITY

- A product with proven endurance; the actuator is tested for thousands of cycles
- The *Maxi Move* has high-quality powered features that the caregiver and patient can rely on
- The *Maxi Move* is supplied with two batteries as standard, allowing for reliable use 24 hours a day

RELIABILITY for good quality care routines at all times, see page 9.

SMOOTH OUTLINE, SMOOTH OPERATION



Updated styling with smooth lines and a pleasing design has been a priority on the new *Maxi Move*. The rounded exterior is easy on the eye, easy to clean and reflects the smooth operating procedures.

New features

With a new built-in electronic scale and a handset control enhanced with a display screen, the *Maxi Move* now provides even greater opportunities to improve the quality of care. A new visual user guide on the mast offers convenient assistance to the caregiver.

Improving life for caregivers and patients

Would you like to give your patients safer, more comfortable handling, while making care routines smoother and more efficient? Would you like to provide a healthier, more ergonomic working environment for caregivers? The *Maxi Move* can help to accomplish both goals.

Total solutions

The benefits of the *Maxi Move* are maximized when it operates in the optimum conditions for efficient, good quality care. ArjoHuntleigh offers complete Safe Patient Handling Solutions for your facility. ArjoHuntleigh is the ideal partner to help ensure a safer and more secure environment for your patients and your staff.

ArjoHuntleigh: a total solution provider, see page 15.



FLEXIBILITY FOR THE DIVERSE CHALLENGES OF EVERYDAY CARE

There is no such thing as a typical patient or a typical healthcare facility. That is why the *Maxi Move* has been designed as a complete system with the flexibility to provide patient-specific solutions in any healthcare environment.

Making the right choice of sling

Patient comfort and safety during lifting and transfers are secured by selecting the most appropriate combination of a spreader bar and sling.

The Combi attachment system gives you access to the widest selection of spreader bars – various sizes of DPS (Dynamic Positioning System), Powered DPS and loop spreader bars, as well as a stretcher frame. This in turn enables you to select from the most comprehensive range of clip and loop slings and *Flites*™.

Equipped for diverse healthcare situations

The *Maxi Move* is a mobile passive lifter designed for people who either have no capacity to support themselves or who are completely dependent (the D and E mobility levels in the Mobility Gallery™). It provides optimum support for these patients in a wide range of healthcare situations.

Maxi Move can:

- Comfortably and securely transfer patients ranging in size from pediatrics to bariatrics weighing a maximum 500 lbs (227 kg)
- Handle routine tasks such as lifting, transfers and repositioning of patients in elderly care, hospitals and other healthcare settings
- Be adjusted quickly for different patients or care routines, making it ideal for facilities with a wide spectrum of patient ages, heights and weights
- Deal with the unforeseen – a patient can be safely lifted from the floor in the event of a fall
- Support stretchers, making it a good choice for supine lifting of patients in acute care
- Be equipped with an extended jib for optimum transfers to and from bulky wheelchairs in special care facilities
- Be fitted with a two point hanger bar and repositioning sling to allow for safe and easy positioning or turning of patients in bed
- Be used with optimum standard or special-purpose slings, such as amputee and bariatric slings, or mesh clip or loop slings, for a range of routines such as toileting, bathing, showering, infection control and stretcher slings



An optimum solution for supine lifting of patients in acute care...



...rehabilitation sessions using the unique walking jacket...



...or for repositioning and turning patients in bed.

STABILITY FOR SAFE, COMFORTABLE TRANSFERS



A safe and easy way to position patients in bed...

Good stability is fundamental for safe operation of the lifter and the patient's sense of security during transfers. The *Maxi Move* is based on a lifting principle that assures excellent stability.

A vertical approach (SVS)

Many passive lifters used in healthcare environments are based on the arc lifting principle. An arc lifter has a tendency to bring the patient uncomfortably close to the mast, which can make it more difficult to position the patient.

The *Maxi Move* offers a different solution - SVS (Stable Vertical System) - which is based on a vertical lifting action that ensures safe, comfortable and dignified transfers. The dual action telescopic mast offers a wide range - it can reach both a very high and a very low position.



...transfer patients to chairs...

The SVS increases comfort and safety by keeping the patient at a constant distance from the mast and in a stable position when lifting and transferring no matter how high or low they are positioned in the lift.

Safety for Patients

Most lifts on the market today utilize long straps and spreader bars that allow for the patient to swing and sway.

The *Maxi Move*, with the short clip four point sling design, minimizes any movement for complete safety and security of the patient. The DPS spreader bar is completely stable with no swing or sway throughout the entire lifting range. Together, the short clip sling design with the stable DPS spreader bar offers unsurpassed stability and security for the patient. Patients who feel safe and secure are less likely to be frightened and uncomfortable.



...or lift supine patients on stretchers.

A stable base for patient weighing

The stability of the *Maxi Move* provides strong support for everyday handling routines as well as for more demanding tasks such as transferring heavy patients or lifting supine patients on stretchers.

Excellent stability also means that patients can be weighed while reclining in the sling, using the new built-in electronic scale (optional). The scale is out of sight, integrated in the housing above the Combi attachment. This design solution improves the lifting height, as the Class III approved scale does not limit the lifting action. The patient's weight is shown on the new display screen of the enhanced handset. Weighing during transfers saves the caregiver's time and eliminates extra transfers to a fixed scale.





RELIABILITY FOR GOOD QUALITY CARE ROUTINES AT ALL TIMES

Ensuring a consistent level of high quality care in busy working environments requires constant availability and excellent operational reliability. The *Maxi Move* has proven endurance and is always ready for duty – a lifter the caregiver can rely on.

Staying power

The on-board battery provides power for lifting/lowering, Powered DPS and opening/closing of the chassis legs. The *Maxi Move* provides consistently high performance at all times thanks to a simple and effective battery management system that ensures the lifter is always ready for use. With two batteries included as standard, there is always a spare battery in the charger and one powering the lifter which allows use 24 hours a day.

New, more effective, batteries have been developed. The battery power level is clearly displayed, and the batteries do not have to be fully depleted before being recharged. This makes it possible to establish efficient daily charging routines and always start work with a fully charged battery.

There is no risk of battery depletion going unnoticed. The battery power level is displayed on the new handset screen. When a battery is low a buzzing signal alerts the caregiver that it is time to charge. However, there is always sufficient power to finish the ongoing lifting routine before changing the battery.

Changing the battery is an easy ergonomic routine as it is located at a good working height on the unit. Similarly, the new wall-mounted charger can be installed at an optimum height to avoid unnecessary strain during battery changing procedures.

Proven reliability

Reliability is built into the *Maxi Move*. The specially designed actuator has been tested to run for thousands of cycles before it needs to be replaced. This durability and long service lifetime also helps to reduce the total cost of ownership.

This proven and thoroughly tested lifter is built to last and will perform safely and reliably, providing continuous optimum performance throughout a long service life.



The battery power level is clearly displayed.



Changing the battery is easy.



The *Maxi Move* integrates well with the *Carendo*™.

ALWAYS THE OPTIMUM PATIENT INTERFACE...



Combi attachment for maximum flexibility.



Extended jib for extra reach.



Slings for individual needs.



Allows easy repositioning up in bed with stretcher sling.

The Combi attachment is a safe, easy-to-use locking device for all ArjoHuntleigh passive lifters that allows easy interchanging between the market's widest selection of spreader bars and stretchers.

Spreader Bars

- DPS stands for Dynamic Positioning System. This open spreader bar (small or medium), used with 4-point clip slings, allows easy repositioning of any patient
- The unique Powered DPS solution is an open spreader bar (medium or large) like DPS, but with an added powered function controlled from the handset that makes repositioning of a patient effortless for the caregiver
- Loop spreader bars (small, medium or large) are compatible with a wide range of loop slings. The loop spreader bar also supports the *Walking Jacket™*, which is used in rehabilitation

Comprehensive range of slings

With maximum flexibility, the *Maxi Move* can be configured to use either clip slings or loop slings, or alternate between the two, depending on the patients needs.

- Clip slings are available in a wide range of sizes and are color coded for easy identification. The range includes repositioning slings, special-purpose slings for toileting, mesh slings for bathing and showering and slings for single and double amputees
- The loop sling range offers standard or padded slings, with or without head support, a number of special purpose slings and a low back alternative applicable if the patient's arms are best positioned outside the sling
- Our wide range of disposable slings (*Flites*) enable you to always find the best solution for your patient or resident

Stretchers

The Combi attachment is compatible with a foldable stretcher frame which supports three types of stretchers:

- Soft stretcher, a full body support solution for dependent patients
- Strap stretcher, an alternative that is easy to place underneath patients
- Scoop stretcher, a more rigid surface for patients with possible spinal injuries

...ALWAYS IN CONTROL

All *Maxi Move* powered features are easily controlled by pressing buttons on the handset, which now features a screen display that shows important data for the user.

The caregiver has complete control of the following powered features:

- Raising and lowering of the lift
- Opening and closing of chassis legs
- Powered DPS

Now with screen display

The new handset is now also a handy source of information for the caregiver. A menu can be accessed that displays information on a color screen built into the handset. This data can include:

- Patient weight (in either lbs or kg)
- On-board battery power level
- Actuator usage

The handset is made out of extremely durable material with an integrated hook which allows it to be placed conveniently on the lift.



Screen with illuminated display.



Dual control function - operates the *Maxi Move* from the mast control panel or the handset.

MAKE THE MOST OF MAXI MOVE...

The *Maxi Move* gives you the best possible basis for good quality patient handling. In consultation with ArjoHuntleigh, you can create a *Maxi Move* system that perfectly matches the needs of your healthcare facility.

Use a better approach for the basics

- Unique features provide the best solution for basic patient handling requirements
- Lifting – a more secure method for transfers using the Stable Vertical System
- Positioning – DPS and Powered DPS minimize manual handling and improve precision

The flexibility to provide optimum care

The Combi attachment enables a fully optimized patient interface for all individuals by giving easy access to:

- The widest range of clip slings or loop slings
- DPS or Powered DPS spreader bars in various sizes
- Stretcher solutions

Benefits from features and accessories

Every *Maxi Move* feature and accessory is designed to support and enhance efficiency and safety according to healthcare facility needs. These features and accessories include:

- Emergency lowering system
- User instructions summary panel on the lifter
- User friendly handset display that illuminates in the dark
- Optional integrated scale
- Optional extended jib for extra reach
- Optional low height castors
- Two batteries as standard
- Wall-mounted charger
- *Cen-Kleen IV™* disinfection agent



The emergency lowering system allows the patient to be lowered without the use of tools.



User instructions summary panel - always there when you need it.



Low height castors - for easier bedside access.



Removable chassis leg covers are easy to detach for cleaning.



The convenient wall mounted battery charger.



Ergonomic handles assist in smooth maneuvering.

...AND MAKE A POSITIVE DIFFERENCE FOR CAREGIVERS AND PATIENTS

Caregivers notice a big improvement in their working environment when they use the *Maxi Move*. Safer, less physically demanding working routines lead to a more content staff. Patients will certainly appreciate being handled in a more comfortable, secure and dignified way.



For the caregiver, working with the *Maxi Move* means....

- Always working with an efficient, easy-to-operate system that creates more time for positive interaction with the patient
- Never having to use manual lifting, because the *Maxi Move* takes care of raising and lowering
- Always being able to provide the right spreader bar and sling for the patient's needs
- Never having to wait to use the lifter because a battery needs recharging
- Always being able to work close to the patient because of the handset control
- Never having to reposition the patient manually because DPS or Powered DPS provides effortless high-precision positioning during transfers and repositioning procedures
- Always being able to work in an ergonomically sound way

For the patient, care routines with the *Maxi Move* mean...

- Always being lifted and transferred by a lifter designed specifically to provide the right level of support
- Never having to endure undignified handling by a team of caregivers, as the *Maxi Move* routines can be managed by one caregiver
- Always being lifted or transferred safely and with dignity, without any manual lifting or handling
- Never having to be lifted in an unsuitable or uncomfortable sling
- Always being comfortable when supported in a semi-reclined position in an open style DPS spreader bar
- Never having to worry about certain care routines, because the *Maxi Move* enables consistently safe and comfortable routines for all care procedures
- Always feeling secure during procedures because the sling does not swing during lifting and transfers



ArjoHuntleigh: A TOTAL SOLUTION PROVIDER

ArjoHuntleigh is not only a supplier of high-quality products such as the *Maxi Move*. The company is a world leader in providing total solutions in a number of care-related areas. Optimum solutions based on a complete philosophy of care are delivered to healthcare environments around the world.

ArjoHuntleigh is a secure, reliable partner. Through the application of its unrivaled knowledge in areas such as injury prevention, patient care, infection control and facility planning – ArjoHuntleigh has been developing and providing solutions in the healthcare sector for over 50 years.

The *Maxi Move* is a perfect example of the continuous commitment of ArjoHuntleigh to provide systems that enhance the quality of life of both caregivers and patients in healthcare facilities and create a safe working environment for caregivers.

ArjoHuntleigh provides the best possible start up support and after sales service to help you work effectively with the *Maxi Move* from the beginning. The start up package includes clear operating instructions. It is backed by high-quality service provided by ArjoHuntleigh Service Representatives.

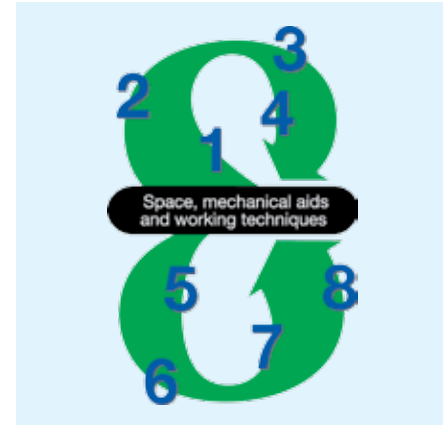
A complete philosophy

The *Maxi Move* is a prime asset for any healthcare environment, but ArjoHuntleigh can also show you how the *Maxi Move* can fit into an overall strategy for improving care.

ArjoHuntleigh has developed a dynamic model – the *Positive Eight* – to demonstrate how care quality can be improved by providing the right conditions for promoting patient mobility – space, mechanical aids and working techniques. The benefits of the *Maxi Move* as a mechanical aid are maximized when it operates in optimum conditions for efficient, good quality care as illustrated in the *Positive Eight* model.

Our Clinical Consultants can help you achieve optimum working spaces when planning healthcare facilities using tools such as the ArjoHuntleigh Guidebook for Architects and Planners.

By offering products that fulfill caregivers and patients needs in combination with consulting services and training, ArjoHuntleigh is the ideal partner in identifying and establishing the foundations for good quality care.



The *Positive Eight*™ - a dynamic model for quality care.



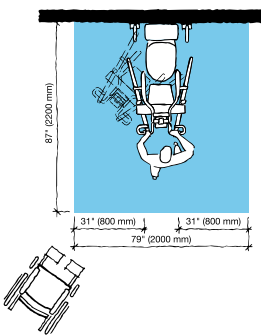
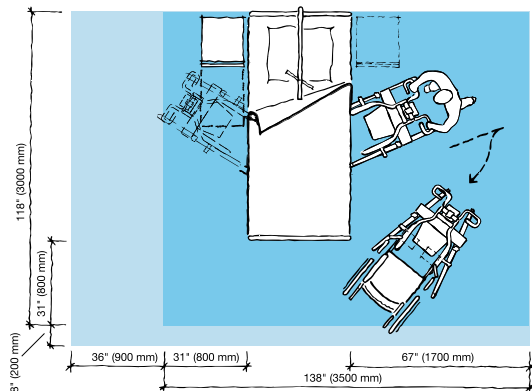
Facility planning advice for architects.



Total solutions with people in mind.

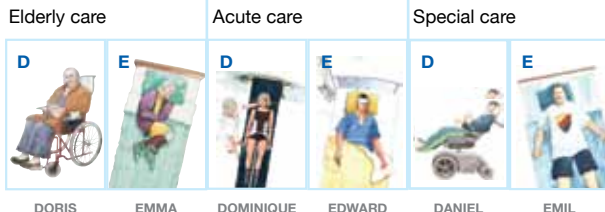
PRODUCT SPECIFICATIONS

Space requirement



- Blue area shows the minimum working area required for the staff to be able to use the mechanical aids in an ergonomic way from one side.
- Light blue area shows required extension of working area to facilitate activities from either side to provide adequate access for the resident, mechanical aid and assisting caregiver.

Mobility Gallery™



D, who has no capacity to support him/herself

E, who is almost completely bedridden and totally dependant

Please contact ArjoHuntleigh for further information on the Mobility Gallery™.

ARJOHUNTLEIGH

GETINGE GROUP

www.ArjoHuntleigh.com

ArjoHuntleigh Inc.
2349 West Lake Street
Addison, Illinois 60101
Phone: 800-323-1245
Fax: 630-925-7969

ArjoHuntleigh Canada Inc.
1575 South Gateway Road Unit C
Mississauga, Ontario L4W 5J1
CANADA
Phone: 800-665-4831
Info.Canada@ArjoHuntleigh.com

Product information

Max. safe working load (SWL)	500 lbs (227 kg)
Max. SWL if equipped with extended jib:	287 lbs (130 kg)
Weight (incl. dedicated jib + medium DPS + battery)	154 lbs (70 kg)
Lifting stroke	51 3/4" (1315 mm)
Min. lifting height (medium DPS)	8 3/4" (225 mm)
Max. lifting height (medium DPS)	60 3/4" (1540 mm)
Height of chassis	4 1/2" (117 mm)
With low height castors	4" (102 mm)
External width legs closed	28 1/4" (718 mm)
Internal width legs open	42" (1074 mm)
Protection Class	Lifter IPX4 Handset IPX7
Battery	24 V, 5.5Ah sealed lead acid
Battery Discharge Indicator (BDI)	Displays remaining power and indicates when the battery needs charging
Service meter - Displays the total usage time (hours)	System failure override
Automatic safety cut-out if lowered onto an obstacle	Low friction castors (rear castors with brakes)
These products are in compliance with current legislation and applicable product standards	
Accessories	
A wide selection of spreader bars	
Wide range of special purpose slings and <i>Flites</i>	
Stretcher solutions	
Optional: extended jib, scale (also available as an upgrade kit)	
<i>Cen-Kleen IV</i> (for disinfection)	

Printed in USA • 01.KM.26.3.US.1.AHG • mrxmv_broch_003010

GETINGE GROUP is a leading global provider of products and systems that contribute to quality enhancement and cost efficiency within healthcare and life sciences. We operate under the three brands of ArjoHuntleigh, GETINGE and MAQUET. **ArjoHuntleigh** focuses on patient mobility and wound management solutions. **GETINGE** provides solutions for infection control within healthcare and contamination prevention within life sciences. **MAQUET** specializes in solutions, therapies and products for surgical interventions and intensive care.

