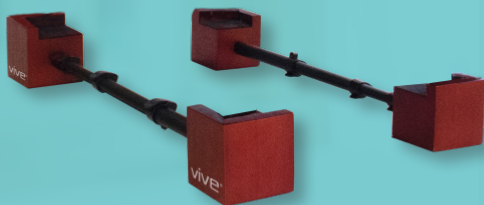


CHAIR RISERS

LVA3006BRN

vive
vivehealth.com



OWNER'S MANUAL

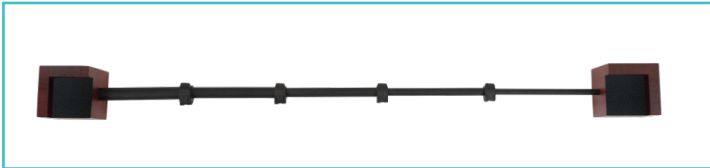
CHAIR RISERS

SPECIFICATIONS

- Elevate 3"
- Unextended: 16.7" (L) x 3.5" (W) x 3.5" (H)



- Extended: 40" (L) x 3.5" (W) x 3.5" (H)



USER INSTRUCTIONS

1. Open the clips to pull the rod out.



2. Extend the length as needed.
3. Place the furniture onto the wood bases.



4. Close the clips to lock in place.



MULTI PURPOSE

- Chair



- Sofa



CARE INSTRUCTIONS

- Wipe down with damp cloth and dry immediately.

WARNINGS

- Regularly check the Chair Risers to identify any signs of instability.
- If you are suffering from an ailment or injury or have a limited balance or ability to stand or sit, consult a physician before using this product.
- Failure to follow the instructions could result in serious injury.
- Do NOT stand or jump on the furniture using this product.