

 **JAY**<sup>®</sup>



**CUSHIONS & BACKS**

# PRODUCT RATING

See “JAY Product Comparison Guide” notes to the right.

Cushions	HCPCS Code	Page #	Lateral Stability					Forward Stability					Pressure Management				
			1	2	3	4	5	1	2	3	4	5	1	2	3	4	5
JAY® Basic	E2601/E2602	6	1	2	3	4	5	1	2	3	4	5	1	2	3	4	5
JAY® GO	E2603/E2604	7	1	2	3	4	5	1	2	3	4	5	1	2	3	4	5
JAY® Soft Combi™ P	E2605/E2606	8	1	2	3	4	5	1	2	3	4	5	1	2	3	4	5
JAY Zip®	E2607	9	1	2	3	4	5	1	2	3	4	5	1	2	3	4	5
JAY Ion®	E2607/E2608	10	1	2	3	4	5	1	2	3	4	5	1	2	3	4	5
JAY® Union™	E2607/E2608	11	1	2	3	4	5	1	2	3	4	5	1	2	3.5	4	5
JAY Easy®	E2607/E2608	12	1	2	3.5	4	5	1	2	3	4	5	1	2	3.5	4	5
JAY X2®	E2622	13	1	2	3.5	4	5	1	2	3	4	5	1	2	3	4	5
JAY J2®	E2622/E2623 E2624/E2625	14	1	2	3	4	5	1	2	3	4	5	1	2	3	4.5	5
JAY J2® Deep Contour	E2622/E2623 E2624/E2625	15	1	2	3	4	5	1	2	3	4	5	1	2	3	4	5
JAY Fusion®	E2622/E2623 E2624/E2625	16	1	2	3	4	5	1	2	3	4	5	1	2	3	4.5	5
JAY Fusion® with CryoFluid™	E2622/E2623 E2624/E2625	17	1	2	3	4	5	1	2	3	4	5	1	2	3	4.5	5
JAY J3®	E2622/E2623 E2624/E2625	18	1	2	3	4	5	1	2	3	4	5	1	2	3	4	5
JAY GS®	E2622 E2624	19	1	2	3	4	5	1	2	3	4	5	1	2	3	4	5
JAY Duo®	E2603	20	1	2	3	4	5	1	2	3	4	5	1	2	3	4	5
JAY J2® Plus	K0669	21	1	2	3	4	5	1	2	3	4	5	1	2	3	4	5

Backs	HCPCS Code	Page #	Accommodating Postural Asymmetries					Modular Design to Accommodate Evolving Presentations					Lateral Stability				
			1	2	3	4	5	1	2	3	4	5	1	2	3	4	5
JAY® GO	E2611/E2612	22	1	2	3	4	5	1	2	3	4	5	1	2	3	4	5
JAY® Basic	E2611	22	1	2	3	4	5	1	2	3	4	5	1	2	3	4	5
JAY Zip®	E2613	23	1	2	3	4	5	1	2	3	4	5	1	2	3	4	5
JAY J3® Posterior	E2613/E2614	24	1	2	3	4	5	1	2	3	4	5	1	2	3	4	5
JAY J3® Posterior & Lateral	E2615	24	1	2	3	4	5	1	2	3	4	5	1	2	3	4	5
JAY J3® Posterior Deep	E2620	24	1	2	3	4	5	1	2	3	4	5	1	2	3	4	5
JAY J3® Posterior & Deep Lateral	E2620	24	1	2	3	4	5	1	2	3	4	5	1	2	3	4	5
JAY J3® Posterior & Deep Contour	E2620	24	1	2	3	4	5	1	2	3	4	5	1	2	3	4	5
<b>Specialty Backs</b>																	
JAY J3® Plus (Bariatric)	E2614	26	1	2	3	4	5	1	2	3	4	5	1	2	3	4	5
JAY J3® Form	E2617	27	1	2	3	4	5	1	2	3	4	5	1	2	3	4	5
JAY J2® / J2® Tall	E2613	28	1	2	3	4	5	1	2	3	4	5	1	2	3	4	5
JAY J2® Deep Contour	E2620	28	1	2	3	4	5	1	2	3	4	5	1	2	3	4	5
JAY® J2™ Plus (Bariatric)	E2613/E2614	29	1	2	3	4	5	1	2	3	4	5	1	2	3	4	5
JAY® Care	E2615	29	1	2	3	4	5	1	2	3	4	5	1	2	3	4	5
JAY® Focus Point	E2620	30	1	2	3	4	5	1	2	3	4	5	1	2	3	4	5
JAY® Encompass	E2617	30	1	2	3	4	5	1	2	3	4	5	1	2	3	4	5

# CONSIDERATIONS

**DISCLAIMER: FOR PROFESSIONAL USE ONLY.** Sunrise Medical strongly recommends that a clinician, such as a doctor or therapist experienced in seating and positioning, be consulted to determine which cushion and/or back is appropriate for the users' specific needs to prevent injury. Cushions, backs, and positioning supports should only be installed by an authorized Sunrise Medical dealer.

## Our goal when creating this guide was to show:

<b>FEATURE:</b>	The materials or design used in the construction of each JAY seating product.
<b>DESIGN INTENT:</b>	The "why" of each component's inclusion in the design.
<b>CLINICAL VALUE:</b>	The intended clinical outcome of each component's material make-up and design intent.
<b>COMMON CLIENT CHARACTERISTICS:</b>	Describes the client for whom each product was designed either by clinically determined criteria or by functional needs.
<b>JAY PRODUCT COMPARISON GUIDE:</b>	A score per product that represents the relative ability of the product to address a clinical indication.
<b>TECHNICAL SPECIFICATIONS AND CUSHION SIZE AVAILABILITY:</b>	Key measurements of each JAY seating product.

## JAY PRODUCT COMPARISON GUIDE

The "score" per product represents the relative ability of this product to address a clinical indication as described below. The product comparison charts are for use only to compare a JAY product to another JAY product and should not be used to compare other manufacturers' products. The ratings should not be taken as indicators of how effective the product will be in addressing any specific users requirements.

### CUSHIONS

#### Lateral Stability

The ability of the cushion to support the pelvis and maintain its current position as the upper body moves forward through the coronal plane, as well as its ability to assist in preventing the pelvis from sliding forward along the cushion during activities such as foot propulsion or weight shifting.

#### Forward Stability

The ability of the cushion to promote a neutral pelvis during an upper body forward motion as well as its ability to assist the pelvis maintain neutral as the upper body returns to its home position along the coronal plane.

#### Pressure Management

The ability of the cushion to distribute loads across the entire sitting surface and to conform to bony prominences while equalizing pressure in surrounding areas.

### BACK SUPPORTS

#### Accommodating Postural Asymmetries

The ability of the backrest to accept external devices such as (but not limited to) head supports laterals, and anterior trunk supports that assist the cervical, thoracic, and, at times, the lumbar spine in maintaining midline along all planes.

#### Modular Design to Accommodate Evolving Presentations

The ability of the back support to accommodate external hardware, foams, or fluid pads that increase surface contact along a user's thoracic and lumbar spine to maintain midline in coronal and sagittal planes. The ability of the back support's mounting hardware to move along both the transverse and coronal plane and maximize the back support's surface contact area with the user.

#### Lateral Stability

The ability of the back support in its standard configuration (without the addition of external lateral supports) to assist the thoracic and, at times, the lumbar spine in maintaining midline along the coronal and sagittal planes.

## COMMON CLIENT CHARACTERISTICS

### Evaluating Skin Integrity

In the "Common Client Characteristics" section, we address the individual's relative risk for skin breakdown. In order to simplify, we have categorized these into three weighted risks: Low risk, Moderate risk, and High risk. Below we define these categories based on the Human Risk Factors listed.

### RISK FACTORS FOR SKIN

#### Primary Factors

- Presence or history of skin breakdown or damage on the sitting surfaces
- Cannot or does not perform functional weight shifts for any reason

#### Secondary Factors

- Protruding bony prominences on the sitting surfaces
- Impaired or absent sensation on the sitting surfaces

#### Contributing Factors

- transfer activities
- muscle atrophy
- aging skin
- orthopedic deformities
- excessive body heat
- incontinence or excessive sweating
- disease (e.g. diabetes, cancer)
- poor nutrition

#### Forces or conditions that can lead to skin breakdown

- Pressure, shear, friction, moisture, heat

An individual may be at **HIGH RISK** for skin breakdown if found upon assessment to present with one or more of the following:

- a primary risk factor
- one or more secondary risk factors in combination with a number of contributing factors
- may score 6-12 on the Braden scale for predicting pressure sore risk

An individual may be at **MODERATE RISK** for skin breakdown if found upon assessment to present with one or more of the following:

- no primary risk factor
- a combination of secondary and/or contributing risk factors
- may score 13-18 on the Braden scale for predicting pressure sore risk

An individual may be at **LOW RISK** for skin breakdown if found upon assessment to present with one or more of the following:

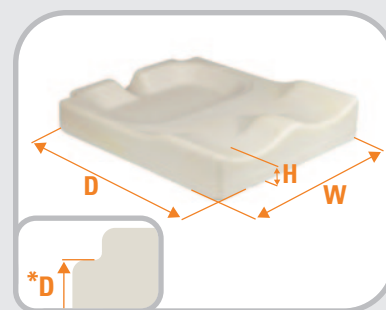
- no primary or secondary risk factors
- some contributing risk factors
- may score 19-23 on the Braden scale for predicting pressure

# TECHNICAL SPECIFICATION MEASUREMENT GUIDE

Below we describe the way each type of measurement has been taken in order to have consistent comparison across the product line.

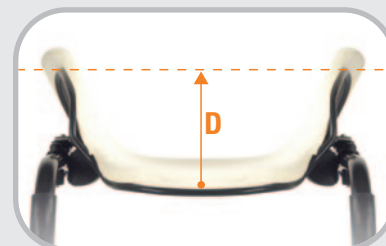
## CUSHIONS

- Width:** Measured across the front of the cushion, at its widest point
- Depth:** Measured from the front to the back of the bottom of the cushion, at its longest point. (\*If back post notches are present the Depth is measured to the front edge of the backpost notch.)
- Height:** Measured from the center of the femoral trough, where the femurs are loaded
- Weight:** Based on the cushion size listed in the Technical Specifications section for each product



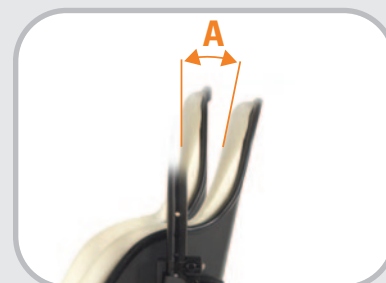
## BACKRESTS

- Width:** Measured across the shell at its widest point
- Height:** Measured from the top of the shell to the bottom, at its center
- Depth:** Measured from the center point on the inside of the back shell to the "edge" of a dotted line from widest point to widest point.
- Weight:** Based on an 18" wide x 18" tall backrest



## BACKREST HARDWARE

- Angle Adjustability:** The angle measured from the back's forward-most position to its rearward most position, measured from the top of the back
- Width Adjustability:** Measures the difference between the back shell width and the width of wheelchair back canes it can accommodate. i.e. A 16" wide JAY J3® back can be mounted on a wheelchair as wide as 18". It's width adjustability measurement is therefore 2".



## JAY YOUR WAY MODIFICATIONS

In this guide, the size availability charts list standard sizes available as well as sizes available through JAY Your Way. JAY Your Way is a modification program designed to individualize and configure JAY products. From clinical improvements to colored covers, JAY Your Way can be used to create cushions and backs manufactured to users' unique individual needs. Personalization opportunities are highlighted throughout this catalog. For more information on ordering a personal configuration please visit the JAY Your Way product page on the website or call customer service



# PRODUCT DESIGN TERMS



## Foam Density

Measured by pounds per cubic foot (PCF), foam density influences its durability. Regardless of foam firmness (or spring) it's important that density remains above 2.5 PCF for proper durability.



## Foam Firmness

The spring back property of foam. Also referred to as IFD (Indentation Force Deflection), foam firmness is unrelated to its density.



## Firmness Layering

The use of multiple layers of materials with varying firmness to change a cushion's ability to distribute load. A common form of firmness layering is to use a firmer material under the thighs and a softer material under the ischial tuberosities to redistribute the load to the thigh region, helping to reduce the chance of tissue breakdown under the ischial tuberosities.



## Hydrostatic Force

A force that is in balance or equally distributed. Hydrostatic forces occur in objects that immerse in fluids (liquid or gas). That is why people say they feel weightless when floating in water. Hydrostatic loading evenly distributes pressure to reduce buildup under sensitive areas of the pelvis which helps prevent decubitus ulcers. Because it is impractical to sit in a bowl of water, fluids (liquid or gas) must be held in a closed container. It is imperative that these containers be flexible and deep enough to easily reshape (allowing displacement) to accommodate the contour of the pelvis. If a fluid can't displace, it won't hydrostatically distribute the load.



## Microclimatic Material

Microclimatic material is a material that encourages the passage of air, heat and water vapor away from the user. Tissue breakdown has been attributed to excess heat and moisture.



## Positioning Capability

The creation of a shape by using one or a combination of the following techniques; pre-contouring, modifying the cushion material, adding or subtracting components, or controlling the volume and location of fluid. Without the ability to properly position, users who have either flexible or fixed postural abnormalities are at risk for increased skeletal problems.



## Pre-contouring

The removal or reshaping of material to create a new shape that encourages distribution of seated pressure by matching the contours of the human body. Pre-contouring encourages distribution of seated pressure, offers stabilizing capabilities, increases comfort and sitting tolerance and can prevent the formation of decubitus ulcers.

## Pressure Distribution vs. Peak Pressure Reduction

Pressure distribution is the act of evenly distributing, or equalizing, pressure over the entire sitting surface or contact area. Peak pressure reduction is the act of reducing pressure from at risk areas of the body that tend to bear the majority of the body's load, such as the ischial tuberosities or scapula.



## Segmentation

Segmentation is the division of a material into segments to reduce tension within the material. Without segmentation, material tension prevents the pelvis from properly immersing into a material such as foam, gel or an air bladder. Segmentation allows these materials to better conform to the shape of the user, which effectively reduces peak pressures.



## Stability

Stability is a cushion's ability to provide both lateral and forward stability. Poor postural stability can easily lead to:

- Skeletal deformities such as kyphosis, scoliosis, and lordosis.
- A poor hip position that compromises the pressure-relieving properties of the cushion.
- The increased likelihood of falling out of a seat or being unable to return to upright.



## Tension Reduction

Tension is the state of being stretched or strained. It is important that cover materials do not hinder the ability of the user to immerse into the cushion or back material, as proper immersion, increases contact area and helps reduce peak pressure areas. Segmented foam and fluid containers also aid in tension reduction.

# JAY BASIC

The JAY® Basic cushion is a soft, mildly contoured durable foam base designed for the client at very low risk of skin breakdown, who requires mild stability.

## Common Client Characteristics

- Clients needing comfort with minimal postural support
- Intact skin integrity or low risk of skin breakdown or shear
- Independent weight shifts and repositioning ability
- Ideal for intermittent wheelchair users



## Basic Rating Scale

Side-to-Side Stability	1
Forward Stability	1
Pressure Management	1

Component	Feature	Design Intent	Clinical Value
BASE	Mildly contoured, beveled base	The soft foam base is mildly contoured to provide support and increase sitting tolerance when using wheelchairs with sling upholstery.	Its beveled bottom reduces the "hammocking" effect of upholstery, keeping the wheelchair seating surface level for improved pelvic alignment over time
COVER	Moisture-resistant cover with no-slip bottom	Protects foam base from moisture build-up. Its no-slip surface keeps the cushion in place during use and transfers	Helps with incontinence management

Technical Specifications	
HCPCS Code	E2601/E2602
Width Range	14" to 24"
Depth Range	16" to 20"
Weight	1.7 lbs (16"x16")
Height	2"
Weight Capacity	250 lbs 300 lbs (22-24" widths)
JAY Your Way Modifications Avail.	Yes
Positioning	No

		WIDTH												
		12"	13"	14"	15"	16"	17"	18"	19"	20"	21"	22"	23"	24"
DEPTH	12"	JYW	JYW	JYW	JYW	JYW	JYW	JYW	JYW	JYW	N/A	N/A	N/A	N/A
	13"	JYW	JYW	JYW	JYW	JYW	JYW	JYW	JYW	JYW	N/A	N/A	N/A	N/A
	14"	JYW	JYW	●	JYW	JYW	JYW	JYW	JYW	JYW	JYW	JYW	JYW	JYW
	15"	JYW	JYW	JYW	JYW	JYW	JYW	JYW	JYW	JYW	JYW	JYW	JYW	JYW
	16"	JYW	JYW	●	●	●	●	●	●	●	JYW	JYW	JYW	JYW
	17"	JYW	JYW	JYW	JYW	●	●	●	●	JYW	JYW	JYW	JYW	JYW
	18"	JYW	JYW	●	●	●	●	●	●	●	JYW	●	JYW	●
	19"	N/A	N/A	N/A	N/A	JYW	JYW	JYW	JYW	JYW	JYW	JYW	JYW	JYW
	20"	N/A	N/A	N/A	N/A	JYW	JYW	●	●	●	JYW	●	JYW	●
	21"	N/A	N/A	N/A	N/A	N/A	N/A	N/A	N/A	JYW	JYW	JYW	JYW	JYW
	22"	N/A	N/A	N/A	N/A	N/A	N/A	N/A	N/A	JYW	JYW	●	JYW	●
	23"	N/A	N/A	N/A	N/A	N/A	N/A	N/A	N/A	N/A	N/A	JYW	JYW	JYW
24"	N/A	N/A	N/A	N/A	N/A	N/A	N/A	N/A	N/A	N/A	JYW	JYW	●	

● Standard size available    JYW Size available through JAY Your Way    N/A Size not available

# JAY GO

The JAY® GO cushion is a soft, mildly contoured, dual-layered foam base with a Dartex® moisture-resistant cover designed for the client at low risk of skin breakdown, who requires mild stability.



## Common Client Characteristics

- May be at low risk of skin breakdown
- May require a comfortable seating surface for symmetrical alignment
- May be in a wheelchair for limited periods of time

## GO Rating Scale

Side-to-Side Stability	1
Forward Stability	1
Pressure Management	2

Component	Feature	Design Intent	Clinical Value
BASE	Mildly contoured, dual-layered foam	Provides comfort with added stability and decreases peak pressures	Increases sitting tolerance
COVER	Dartex® coated Lycra® outer cover with Aquaguard® zipper and anti-wicking thread	Protects foam base from moisture build up and is easy to clean	Helps with incontinence management

Technical Specifications	
HCPCS Code	E2603/E2604
Width Range	14" to 24"
Depth Range	14" to 24"
Weight	2.5 lbs (16"x18")
Height	3"
Weight Capacity	300 lbs 500 lbs (22-24" widths)
JAY Your Way Modifications Avail.	Yes
Positioning	No

		WIDTH										
		14"	15"	16"	17"	18"	19"	20"	21"	22"	23"	24"
DEPTH	12"	N/A	N/A	N/A	N/A	N/A	N/A	N/A	N/A	N/A	N/A	N/A
	13"	N/A	N/A	N/A	N/A	N/A	N/A	N/A	N/A	N/A	N/A	N/A
	14"	●	●	●	●	●	N/A	N/A	N/A	N/A	N/A	N/A
	15"	●	●	●	●	●	●	●	N/A	N/A	N/A	N/A
	16"	●	●	●	●	●	●	●	N/A	N/A	N/A	N/A
	17"	●	●	●	●	●	●	●	●	●	N/A	N/A
	18"	●	●	●	●	●	●	●	●	●	N/A	N/A
	19"	●	●	●	●	●	●	●	●	●	●	●
	20"	●	●	●	●	●	●	●	●	●	●	●
	21"	N/A	●	●	●	●	●	●	●	●	●	●
	22"	N/A	N/A	●	●	●	●	●	●	●	●	●
	23"	N/A	N/A	N/A	●	●	●	●	●	●	●	●
	24"	N/A	N/A	N/A	N/A	●	●	●	●	●	●	●

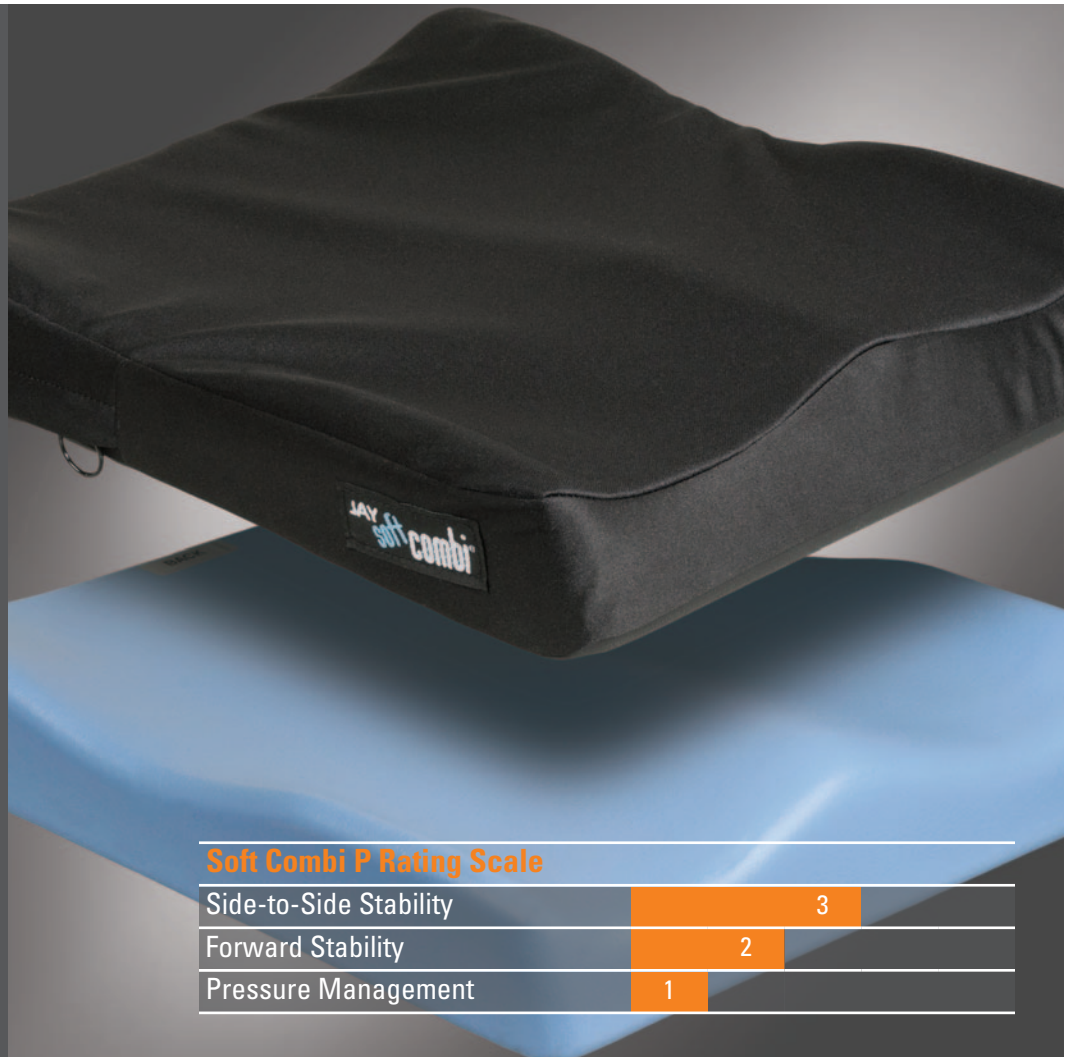
● Standard size available    JYW Size available through JAY Your Way    N/A Size not available

# JAY SOFT COMBI™ P

The JAY® Soft Combi™ P cushion is a lightweight, soft and mildly contoured foam cushion designed for the client at low risk of skin breakdown, who requires mild to moderate postural support.

## Common Client Characteristics

- May be at very low risk of skin breakdown
- May have mild positioning needs
- May require a comfortable seating surface
- May be in a wheelchair for limited periods of time



### Soft Combi P Rating Scale

Side-to-Side Stability	3
Forward Stability	2
Pressure Management	1

Component	Feature	Design Intent	Clinical Value
BASE	Pre-contoured, high-resiliency foam	Provides positioning of the pelvis and thighs	Improves orthopedic alignment
	Foam outer coating	Protects foam base from moisture build up and is easy to clean	Helps with incontinence management
COVER	Moisture resistant cover	Protects foam base from moisture build up	Helps with incontinence management
	Non-slip bottom surface	Keeps cushion located properly	Reduces misalignment during use, and promotes safe transfers

Technical Specifications	
HCPCS Code	E2605/E2606
Width Range	14" to 24"
Depth Range	14" to 18"
Weight	2.8 lbs (16"x16")
Height	3"
Weight Capacity	250 lbs 300 lbs (22"-24" widths)
JAY Your Way Modifications Avail.	Yes
Positioning	Yes

		WIDTH										
		14"	15"	16"	17"	18"	19"	20"	21"	22"	23"	24"
DEPTH	12"	N/A	N/A	N/A	N/A	N/A	N/A	N/A	N/A	N/A	N/A	N/A
	13"	N/A	N/A	N/A	N/A	N/A	N/A	N/A	N/A	N/A	N/A	N/A
	14"	●	N/A	JYW	JYW	JYW	JYW	JYW	N/A	N/A	N/A	N/A
	15"	JYW	N/A	JYW	JYW	JYW	JYW	JYW	N/A	N/A	N/A	N/A
	16"	●	JYW	●	●	●	●	●	N/A	JYW	N/A	JYW
	17"	JYW	JYW	●	●	●	●	●	N/A	JYW	N/A	JYW
	18"	●	●	●	●	●	●	●	N/A	●	N/A	●
	19"	N/A	N/A	JYW	N/A	JYW	JYW	JYW	N/A	JYW	N/A	JYW
	20"	N/A	N/A	●	N/A	●	●	●	N/A	●	N/A	●
	21"	N/A	N/A	N/A	N/A	N/A	N/A	N/A	N/A	JYW	N/A	JYW
	22"	N/A	N/A	N/A	N/A	N/A	N/A	N/A	N/A	N/A	N/A	●
	23"	N/A	N/A	N/A	N/A	N/A	N/A	N/A	N/A	N/A	N/A	JYW
24"	N/A	N/A	N/A	N/A	N/A	N/A	N/A	N/A	N/A	N/A	●	

● Standard size available    JYW Size available through JAY Your Way    N/A Size not available



# JAY ZIP

The JAY Zip® is an anti-microbial, convenient, and comfortable skin protection and positioning cushion designed specifically for pediatric clients.



### Zip Rating Scale

Side-to-Side Stability	3
Forward Stability	3
Pressure Management	3

### Common Client Characteristics

- May be at a moderate risk of skin breakdown
- May be able to perform independent weight shifts
- May have moderate positioning needs
- May be in a wheelchair for extended periods of time
- Designed for pediatric clients

Component	Feature	Design Intent	Clinical Value
BASE	Soft foam base with optimized firmness by cushion width	Optimizes cushion performance for pediatric clients with varying weights	Encourages improved orthopedic alignment and accommodates individual user needs
	Soft Visco™ memory foam top layer	Enhances comfort for pediatric clients	Increases sitting tolerance
INNER COVER	Inner cover with Aquaguard™ zipper and anti-wicking thread	Protects foam from moisture build up and is easy to clean	Helps extend the life of the cushion and reduces risk of skin breakdown
COVER	Spacer fabric layer	Dissipates heat and moisture	Reduces risk of skin breakdown
	Ionic+™ silver thread stretch outer cover	Reduces surface tension and resists bacterial growth	Helps prevent bacterial growth and reduces risk of skin breakdown
	Standard with 2 outer covers	Allows for continued use	Allows for optimal product use during cleaning

Technical Specifications	
HPCPS Code	E2607
Width Range	8" to 16"
Depth Range	8" to 16"
Weight	1.2 lbs (12"x12")
Height	2.75"
Weight Capacity	165 lbs
JAY Your Way Modifications Avail.	Yes
Positioning	No

		WIDTH								
		8"	9"	10"	11"	12"	13"	14"	15"	16"
DEPTH	8"	●	●	●	●	N/A	N/A	N/A	N/A	N/A
	9"	●	●	●	●	●	N/A	N/A	N/A	N/A
	10"	●	●	●	●	●	●	N/A	N/A	N/A
	11"	●	●	●	●	●	●	●	N/A	N/A
	12"	●	●	●	●	●	●	●	●	N/A
	13"	●	●	●	●	●	●	●	●	●
	14"	●	●	●	●	●	●	●	●	●
	15"	N/A	●	●	●	●	●	●	●	●
	16"	N/A	N/A	●	●	●	●	●	●	●
17"	N/A	N/A	N/A	●	●	●	●	●	●	
18"	N/A	N/A	N/A	N/A	●	●	●	●	●	

● Standard size available    JYW Size available through JAY Your Way    N/A Size not available



Also available with optional colored cover sidebands.

# JAY ION®

The JAY Ion® is a comfortable skin protection and positioning cushion composed of a multi-layered foam base, moisture resistant inner cover, and an anti-microbial outer cover.



## Common Client Characteristics

- May be at moderate risk of skin breakdown
- May be able to perform independent weight shifts
- May have moderate positioning needs
- May be in a wheelchair for extended periods of time

### Ion Rating Scale

Side-to-Side Stability	3
Forward Stability	3
Pressure Management	3

Component	Feature	Design Intent	Clinical Value
BASE	Multilayered foam base with optimized densities by width	Optimizes cushion performance by user weight ranges	Encourages improved orthopedic alignment and accommodates individual user needs
	Soft Visco™ memory foam top layer	Enhances comfort	Increases sitting tolerance
INNER COVER	Inner cover with Aquaguard™ zipper and anti-wicking thread	Protects foam from moisture build up and is easy to clean	Helps with incontinence management
COVER	Spacer fabric	Dissipates heat and moisture	Reduces risk of skin breakdown
	Ionic+™ silver thread stretch outer cover	Reduce surface tension and resist bacterial growth	Helps prevent bacterial growth and reduces risk of skin breakdown

Technical Specifications	
HCPSC Code	E2607/E2608
Width Range	14" to 24"
Depth Range	14" to 24"
Weight	3.5 lbs (18"x18")
Height	4"
Weight Capacity	300 lbs 500 lbs (22-24" widths)
JAY Your Way Modifications Avail.	Yes
Positioning	No

		WIDTH										
		14"	15"	16"	17"	18"	19"	20"	21"	22"	23"	24"
DEPTH	14"	●	●	●	●	●	N/A	N/A	N/A	N/A	N/A	N/A
	15"	●	●	●	●	●	●	●	N/A	N/A	N/A	N/A
	16"	●	●	●	●	●	●	●	N/A	N/A	N/A	N/A
	17"	●	●	●	●	●	●	●	●	N/A	N/A	N/A
	18"	●	●	●	●	●	●	●	●	●	N/A	N/A
	19"	N/A	●	●	●	●	●	●	●	●	●	●
	20"	N/A	●	●	●	●	●	●	●	●	●	●
	21"	N/A	●	●	●	●	●	●	●	●	●	●
	22"	N/A	N/A	●	●	●	●	●	●	●	●	●
	23"	N/A	N/A	N/A	●	●	●	●	●	●	●	●
	24"	N/A	N/A	N/A	N/A	●	●	●	●	●	●	●

● Standard size available    JYW Size available through JAY Your Way    N/A Size not available

# JAY UNION®

The JAY Union® is a versatile, comfortable, skin protection and positioning cushion composed of a dynamic fluid and foam layering system, moisture resistant inner cover, and an anti-microbial outer cover.



Reduced Profile Option

## Common Client Characteristics

- May be at moderate to high risk of skin breakdown
- May be able to perform independent weight shifts
- May have moderate positioning needs
- May be in a wheelchair for extended periods of time

## Union Rating Scale

Side-to-Side Stability	4
Forward Stability	4
Pressure Management	3.5

Component	Feature	Design Intent	Clinical Value
BASE	Pre-contoured, high-resiliency foam with additional lateral pelvic support	Provides positioning of the pelvis and thighs	Encourages improved orthopedic alignment
	Soft, gel-infused Visco™ memory foam with an extra layer covering the Pelvic Loading Area	Enhances comfort	Increases sitting tolerance
INSERT	JAY Flow® fluid tripad	Consistently ensures proper fluid placement by reducing fluid migration	Reduces risk of skin breakdown
INNER COVER	Inner cover with Aquaguard™ zipper and anti-wicking thread	Protects foam base from moisture build up and is easy to clean	Helps with incontinence management
COVER	Spacer fabric layer	Dissipates heat and moisture	Reduces risk of skin breakdown
	Ionic+™ silver thread stretch outer cover	Reduces surface tension and resists bacterial growth	Helps prevent bacterial growth and reduces risk of skin breakdown

Technical Specifications	
HPCPS Code	E2607/E2608
Width Range	14" to 24"
Depth Range	14" to 24"
Weight	5.25 lbs (16"x18")
Height	4.5" (3.5" Reduced)
Weight Capacity	300 lbs 500 lbs (22-24" widths)
JAY Your Way Modifications Avail.	Yes
Positioning	No

		WIDTH										
		14"	15"	16"	17"	18"	19"	20"	21"	22"	23"	24"
DEPTH	12"	N/A	N/A	N/A	N/A	N/A	N/A	N/A	N/A	N/A	N/A	N/A
	13"	N/A	N/A	N/A	N/A	N/A	N/A	N/A	N/A	N/A	N/A	N/A
	14"	●	●	●	●	●	N/A	N/A	N/A	N/A	N/A	N/A
	15"	●	●	●	●	●	●	●	N/A	N/A	N/A	N/A
	16"	●	●	●	●	●	●	●	N/A	N/A	N/A	N/A
	17"	●	●	●	●	●	●	●	●	●	N/A	N/A
	18"	●	●	●	●	●	●	●	●	●	●	N/A
	19"	N/A	●	●	●	●	●	●	●	●	●	●
	20"	N/A	●	●	●	●	●	●	●	●	●	●
	21"	N/A	N/A	N/A	●	●	●	●	●	●	●	●
	22"	N/A	N/A	N/A	N/A	●	●	●	●	●	●	●
	23"	N/A	N/A	N/A	N/A	N/A	●	●	●	●	●	●
	24"	N/A	N/A	N/A	N/A	N/A	N/A	●	●	●	●	●

● Standard size available    JYW Size available through JAY Your Way    N/A Size not available

# JAY EASY®

The JAY Easy® is a skin protection and positioning cushion composed of a high-resiliency foam base, built-in lateral and medial thigh supports that can accommodate a curved or flat seating surface, and JAY® Flow™ fluid tripad.

## Common Client Characteristics

- May be at moderate to high risk of skin breakdown
- May have moderate positioning requirements
- May have mild asymmetrical posture
- May be in a wheelchair for extended periods of time



## Easy Rating Scale

Side-to-Side Stability	3.5
Forward Stability	3
Pressure Management	3.5

Component	Feature	Design Intent	Clinical Value
BASE	Pre-contoured, high-resiliency foam	Provides positioning of the pelvis and thighs	Encourages improved orthopedic alignment
	Optional curved bottom	Reduces "hammocking" effect of seat upholstery	Provides a level base of support which promotes proper pelvic alignment
INSERT	JAY Flow® fluid tripad	Consistently ensures proper fluid placement by reducing fluid migration	Reduces risk of skin breakdown
COVER	Moisture resistant cover	Protects foam base from moisture build up	Helps with incontinence management
	Non-slip bottom surface	Keeps cushion located properly	Reduces misalignment during use and promotes safe transfers

Technical Specifications	
HCPCS Code	E2607/E2608
Width Range	14" to 24"
Depth Range	14" to 24"
Weight	4 lbs (16"x16")
Height	3"
Weight Capacity	250 lbs
JAY Your Way Modifications Avail.	Yes
Positioning	Yes

		WIDTH													
		12"	13"	14"	15"	16"	17"	18"	19"	20"	21"	22"	23"	24"	
DEPTH	12"	JYW	JYW	JYW	N/A	N/A	N/A	N/A	N/A	N/A	N/A	N/A	N/A	N/A	
	13"	JYW	JYW	JYW	JYW	JYW	JYW	JYW	N/A	N/A	N/A	N/A	N/A	N/A	
	14"	JYW	JYW	●	JYW	JYW	JYW	JYW	JYW	JYW	N/A	N/A	N/A	N/A	
	15"	N/A	JYW	JYW	●	●	●	JYW	JYW	JYW	N/A	N/A	N/A	N/A	
	16"	JYW	JYW	●	●	●	●	●	●	●	JYW	JYW	JYW	JYW	
	17"	N/A	JYW	JYW	●	●	●	●	●	JYW	JYW	JYW	JYW	JYW	
	18"	JYW	JYW	●	JYW	●	●	●	●	●	JYW	●	JYW	●	
	19"	N/A	N/A	N/A	N/A	JYW	JYW	JYW	JYW	JYW	JYW	JYW	JYW	JYW	
	20"	N/A	N/A	N/A	N/A	JYW	JYW	●	●	●	JYW	●	JYW	●	
	21"	N/A	N/A	N/A	N/A	N/A	N/A	N/A	N/A	JYW	JYW	JYW	JYW	JYW	
	22"	N/A	N/A	N/A	N/A	N/A	N/A	N/A	N/A	JYW	JYW	●	JYW	●	
	23"	N/A	N/A	N/A	N/A	N/A	N/A	N/A	N/A	N/A	N/A	JYW	JYW	JYW	
	24"	N/A	N/A	N/A	N/A	N/A	N/A	N/A	N/A	N/A	N/A	JYW	JYW	●	

● Standard size available    JYW Size available through JAY Your Way    N/A Size not available

# JAY X2®

The JAY X2® is a lightweight foam cushion designed for the active client at moderate to high risk of skin breakdown, who requires mild to moderate positioning. The soft foam base allows the client to sit at the front of the cushion comfortably.



## Common Client Characteristics

- May be at moderate to high risk of skin breakdown
- May be able to perform independent weight shifts
- May have moderate positioning needs
- May be in a wheelchair for extended periods of time

### X2 Rating Scale

Side-to-Side Stability	3.5
Forward Stability	3
Pressure Management	4

Component	Feature	Design Intent	Clinical Value
BASE	Non-contoured, high resiliency foam	Allows forward sitting	Enhances independence during Activities of Daily Living (ADLs)
	Rear coccyx notch	Reduces peak pressures	Reduces risk of skin breakdown over coccyx bone
INSERT	JAY Flow® fluid tripad	Consistently ensures proper fluid placement by reducing fluid migration	Reduces risk of skin breakdown
INNER COVER	Inner cover with Aquaguard™ zipper and anti-wicking thread	Protects foam from moisture build-up and is easy to clean	Reduces risk of skin breakdown for active users and helps with incontinence management
COVER	Built-in modular thigh support compartments with 1" lateral thigh supports	Provide additional positioning and easily accommodate various positioning components	Encourage improved orthopedic alignment
	Stretch cover with zipper closure	Reduces surface tension and protects foam from moisture build-up	Promotes proper immersion and reduces risk of skin breakdown
	Optional extra cover	Allows for continued use	Allows for optimal product use during cleaning

Technical Specifications	
HCPCS Code	E2622
Width Range	14" to 20"
Depth Range	14" to 20"
Weight	3.8 lbs (16"x16")
Height	2.25"
Weight Capacity	300 lbs
JAY Your Way Modifications Avail.	Yes
Positioning	No

		WIDTH							
		13"	14"	15"	16"	17"	18"	19"	20"
DEPTH	12"	JYW	JYW	JYW	JYW	JYW	JYW	N/A	N/A
	13"	JYW	JYW	JYW	JYW	JYW	JYW	N/A	N/A
	14"	JYW	●	JYW	JYW	JYW	JYW	N/A	N/A
	15"	JYW	JYW	●	JYW	JYW	JYW	N/A	N/A
	16"	N/A	●	●	●	●	●	JYW	JYW
	17"	N/A	N/A	JYW	●	●	JYW	JYW	JYW
	18"	N/A	N/A	JYW	●	JYW	●	JYW	JYW
	19"	N/A	N/A	JYW	JYW	JYW	JYW	JYW	JYW
	20"	N/A	N/A	JYW	●	JYW	●	JYW	●
	21"	N/A	N/A	N/A	N/A	N/A	N/A	N/A	N/A
	22"	N/A	N/A	N/A	N/A	N/A	N/A	N/A	N/A

● Standard size available    JYW Size available through JAY Your Way    N/A Size not available

# JAY J2®

The JAY J2® is a pre-contoured foam cushion that features a JAY Flow® fluid tripad for superior skin protection and an easy to modify base with optional positioning components for optimal stability.

## Common Client Characteristics

- May be at high risk of skin breakdown
- May not be able to perform independent weight shifts
- May have changing postural needs over time
- May have aggressive positioning needs
- May be in a wheelchair for extended periods of time
- May experience weight loss



### J2 Rating Scale

Side-to-Side Stability	4
Forward Stability	3
Pressure Management	4.5

Component	Feature	Design Intent	Clinical Value
BASE	Pre-contoured structural closed cell foam	Provides lateral and forward stability that is easy to modify	Encourages orthopedic alignment, increases sitting tolerance and accommodates changing user needs
	Extensive variety of positioning components	Provides optimal stability	Encourages orthopedic alignment and accommodates individual user needs
INSERT	JAY Flow® fluid tripad	Consistently ensures proper fluid placement by reducing fluid migration	Reduces risk of skin breakdown
COVER	Stretch outer cover	Reduces surface tension	Promotes proper immersion and reduces risk of skin breakdown
	Microclimatic outer cover	Dissipates heat and moisture	Reduces risk of skin breakdown
	Incontinence outer cover	Protects foam base from moisture build-up	Helps with incontinence management

### Technical Specifications

HCPCS Code	E2622/3 & E2624/5
Width Range	14" to 24"
Depth Range	14" to 20"
Weight	5.5 lbs (16"x16")
Height	2.5"
Weight Capacity	300 lbs 500 lbs 22" to 24" widths
JAY Your Way Modifications Avail.	Yes
Positioning	Yes

		WIDTH													
		12"	13"	14"	15"	16"	17"	18"	19"	20"	21"	22"	23"	24"	
DEPTH	12"	JYW	JYW	JYW	JYW	JYW	JYW	JYW	JYW	JYW	JYW	JYW	JYW	JYW	
	13"	JYW	JYW	JYW	JYW	JYW	JYW	JYW	JYW	JYW	JYW	JYW	JYW	JYW	
	14"	JYW	JYW	●	JYW	●	JYW	JYW	JYW	JYW	JYW	JYW	JYW	JYW	
	15"	JYW	JYW	JYW	JYW	JYW	JYW	JYW	JYW	JYW	JYW	JYW	JYW	JYW	
	16"	JYW	JYW	JYW	JYW	●	JYW	●	JYW	●	JYW	JYW	JYW	JYW	
	17"	JYW	JYW	JYW	JYW	JYW	●	JYW	●	JYW	JYW	JYW	JYW	JYW	
	18"	JYW	JYW	JYW	JYW	●	JYW	●	JYW	●	JYW	JYW	JYW	JYW	
	19"	JYW	JYW	JYW	JYW	JYW	JYW	JYW	JYW	JYW	JYW	JYW	JYW	JYW	
	20"	N/A	N/A	JYW	JYW	JYW	JYW	●	JYW	●	JYW	JYW	JYW	●	
	21"	N/A	N/A	JYW	JYW	JYW	JYW	JYW	JYW	JYW	JYW	JYW	JYW	JYW	
	22"	N/A	N/A	JYW	JYW	JYW	JYW	JYW	JYW	JYW	JYW	JYW	JYW	JYW	
	23"	N/A	N/A	JYW	JYW	JYW	JYW	JYW	JYW	JYW	JYW	JYW	JYW	JYW	
	24"	N/A	N/A	JYW	JYW	JYW	JYW	JYW	JYW	JYW	JYW	JYW	JYW	JYW	

● Standard size available    JYW Size available through JAY Your Way    N/A Size not available

# JAY J2® DEEP CONTOUR

The JAY J2® Deep Contour is a pre-contoured foam cushion that features a 3" deep pelvic loading area, a JAY Flow® fluid tripod for superior skin protection, and an easy to modify base for optimal stability.

## Common Client Characteristics

- May be at extremely high risk of skin breakdown
- May not be able to perform independent weight shifts
- May have changing postural needs over time
- May be in a wheelchair for extended periods of time
- May experience weight loss



### J2 Deep Contour Rating Scale

Side-to-Side Stability	4
Forward Stability	4
Pressure Management	5

Component	Feature	Design Intent	Clinical Value
BASE	Pre-contoured structural closed cell foam	Provides lateral and forward stability that is easy to modify	Encourages orthopedic alignment, increases sitting tolerance and accommodates changing user needs
	Increased well depth	Provides optimal immersion and increased stability	Encourages orthopedic alignment and accommodates individual user needs
INSERT	JAY Flow® fluid tripod with increased fluid volume	Consistently ensures proper fluid placement by reducing fluid migration	Reduces risk of skin breakdown
COVER	Stretch outer cover	Reduces surface tension	Promotes proper immersion and reduces risk of skin breakdown
	Microclimatic outer cover	Dissipates heat and moisture	Reduces risk of skin breakdown
	Incontinence outer cover	Protects foam base from moisture build up	Helps with incontinence management

Technical Specifications	
HCPCS Code	E2622/3 & E2624/5
Width Range	14" to 24"
Depth Range	14" to 20"
Weight	6.27 lbs (16"x16")
Height	4.5"
Weight Capacity	300 lbs 500 lbs 22" to 24 widths
JAY Your Way Modifications Avail.	Yes
Positioning	Yes

		WIDTH											
		13"	14"	15"	16"	17"	18"	19"	20"	21"	22"	23"	24"
DEPTH	12"	JYW	JYW	N/A	N/A	N/A	N/A	N/A	N/A	N/A	N/A	N/A	N/A
	13"	JYW	JYW	JYW	N/A	N/A	N/A	N/A	N/A	N/A	N/A	N/A	N/A
	14"	JYW	●	JYW	JYW	JYW	JYW	JYW	JYW	JYW	JYW	JYW	JYW
	15"	JYW	JYW	●	JYW	JYW	JYW	JYW	JYW	JYW	JYW	JYW	JYW
	16"	JYW	●	JYW	●	JYW	●	JYW	●	JYW	●	JYW	JYW
	17"	N/A	JYW	●	JYW	●	JYW	JYW	JYW	JYW	JYW	JYW	JYW
	18"	N/A	JYW	JYW	●	JYW	●	JYW	●	JYW	●	JYW	●
	19"	N/A	JYW	JYW	JYW	JYW	JYW	JYW	JYW	JYW	JYW	JYW	JYW
	20"	N/A	N/A	JYW	●	JYW	●	JYW	●	JYW	JYW	JYW	JYW
	21"	N/A	N/A	JYW	JYW	JYW	JYW	JYW	JYW	JYW	JYW	JYW	JYW
	22"	N/A	N/A	JYW	JYW	JYW	JYW	JYW	JYW	JYW	JYW	JYW	JYW
	23"	N/A	N/A	JYW	JYW	JYW	JYW	JYW	JYW	JYW	JYW	JYW	JYW
	24"	N/A	N/A	JYW	JYW	JYW	JYW	JYW	JYW	JYW	JYW	JYW	JYW

● Standard size available    JYW Size available through JAY Your Way    N/A Size not available

# JAY FUSION®

The JAY Fusion® is an adjustable cushion designed for skin protection that features JAY Flow® fluid or JAY® Air™ insert options in a package that's comfortable, stable and supportive.

## Common Client Characteristics

- May be at high risk of skin breakdown
- May not be able to perform independent weight shifts
- May have changing postural needs over time
- May have aggressive positioning needs
- May be in a wheelchair for extended periods of time
- May experience weight loss



### Fusion Rating Scale

Side-to-Side Stability	5
Forward Stability	4
Pressure Management	4.5

Component	Feature	Design Intent	Clinical Value
BASE	Pre-contoured closed cell foam base	Provides lateral and forward stability that is easy to modify	Encourages orthopedic alignment, increases sitting tolerance and accommodates changing user needs
	Pre-contoured, high-resiliency foam layer with posterior pelvic wall	Provides positioning of the pelvis and thighs and reduces fluid migration	Encourages improved orthopedic alignment
INSERT	Optional JAY Flow® fluid pad	Consistently ensures proper fluid placement by reducing fluid migration	Reduces risk of skin breakdown
	Optional JAY® Air™ insert available in single valve or dual valve options	Allows personalization of air levels to optimize immersion and accommodate asymmetric postures	Reduces risk of skin breakdown
INNER COVER	Inner cover with Aquaguard™ zipper and anti-wicking thread	Protects foam base from moisture build up and is easy to clean	Helps with incontinence management
COVER	Ionic+™ silver thread stretch outer cover	Reduces surface tension and resist bacterial growth	Helps prevent bacterial growth and reduces risk of skin breakdown

### Technical Specifications

HCPCS Code	E2622/3 & E2624/5
Width Range	14" to 24"
Depth Range	14" to 24"
Weight	5.3 lbs (16"x18" w/fluid)
Height	4", 3" Reduced Profile, & 5" Positioning
Weight Capacity	300 lbs 500 lbs (22-24" widths)
JAY Your Way Modifications Avail.	Yes
Positioning	Yes

		WIDTH											
		13"	14"	15"	16"	17"	18"	19"	20"	21"	22"	23"	24"
DEPTH	12"	JYW	JYW	JYW	JYW	JYW	JYW	N/A	N/A	N/A	N/A	N/A	N/A
	13"	JYW	JYW	JYW	JYW	JYW	JYW	JYW	JYW	JYW	JYW	N/A	N/A
	14"	JYW	●	●	●	●	●	JYW	JYW	JYW	JYW	N/A	N/A
	15"	JYW	●	●	●	●	●	●	●	JYW	JYW	JYW	JYW
	16"	JYW	●	●	●	●	●	●	●	JYW	JYW	JYW	JYW
	17"	JYW	●	●	●	●	●	●	●	●	●	JYW	JYW
	18"	JYW	●	●	●	●	●	●	●	●	●	JYW	JYW
	19"	JYW	JYW	●	●	●	●	●	●	●	●	●	●
	20"	JYW	JYW	●	●	●	●	●	●	●	●	●	●
	21"	JYW	JYW	●	●	●	●	●	●	●	●	●	●
	22"	N/A	N/A	JYW	●	●	●	●	●	●	●	●	●
	23"	N/A	N/A	N/A	JYW	●	●	●	●	●	●	●	●
24"	N/A	N/A	N/A	N/A	JYW	●	●	●	●	●	●	●	

● Standard size available    JYW Size available through JAY Your Way    N/A Size not available



# JAY FUSION® WITH CRYO® TECHNOLOGY

The JAY Fusion® with Cryo Technology provides the highest degree of skin protection on the market. The CryoFluid Insert addresses all 4 major risk factors: pressure, shear, temperature, and moisture.

## Common Client Characteristics

- May be at high risk of skin breakdown
- May not be able to perform independent weight shifts
- May have changing postural needs over time
- May have aggressive positioning needs
- May be in a wheelchair for extended periods of time
- May experience weight loss



Reduced Profile Option



Positioning Option

### Fusion Rating Scale

Side-to-Side Stability	5
Forward Stability	4
Pressure Management	4.5

Component	Feature	Design Intent	Clinical Value
BASE	Pre-contoured closed cell foam base	Provides lateral and forward stability that is easy to modify	Encourages orthopedic alignment, increases sitting tolerance and accommodates changing user needs
	Pre-contoured, high-resiliency foam layer with posterior pelvic wall	Provides positioning of the pelvis and thighs and reduces fluid migration	Encourages improved orthopedic alignment
INSERT	JAY fluid® with Cryo® Technology	Consistently ensures proper fluid placement by reducing fluid migration	Reduces risk of skin breakdown
INNER COVER	Inner cover with Aquaguard™ zipper and anti-wicking thread	Protects foam base from moisture build up and is easy to clean	Helps with incontinence management
COVER	Ionic+™ silver thread stretch outer cover	Reduces surface tension and resist bacterial growth	Helps prevent bacterial growth and reduces risk of skin breakdown

### Technical Specifications

HCPCS Code	E2622/3 & E2624/5
Width Range	14" to 24"
Depth Range	14" to 24"
Weight	5.3 lbs (16"x18" w/fluid)
Height	4", 3" Reduced Profile, & 5" Positioning
Weight Capacity	300 lbs 500 lbs (22-24" widths)
JAY Your Way Modifications Avail.	Yes
Positioning	Yes

		WIDTH											
		13"	14"	15"	16"	17"	18"	19"	20"	21"	22"	23"	24"
DEPTH	12"	JYW	JYW	JYW	JYW	JYW	JYW	N/A	N/A	N/A	N/A	N/A	N/A
	13"	JYW	JYW	JYW	JYW	JYW	JYW	JYW	JYW	JYW	N/A	N/A	N/A
	14"	JYW	●	●	●	●	●	JYW	JYW	JYW	JYW	N/A	N/A
	15"	JYW	●	●	●	●	●	●	●	JYW	JYW	N/A	N/A
	16"	JYW	●	●	●	●	●	●	●	JYW	JYW	N/A	N/A
	17"	JYW	●	●	●	●	●	●	●	●	●	N/A	N/A
	18"	JYW	●	●	●	●	●	●	●	●	●	●	N/A
	19"	JYW	JYW	●	●	●	●	●	●	●	●	●	N/A
	20"	JYW	JYW	●	●	●	●	●	●	●	●	●	N/A
	21"	JYW	JYW	●	●	●	●	●	●	●	●	●	N/A
	22"	N/A	N/A	JYW	●	●	●	●	●	●	●	●	N/A
	23"	N/A	N/A	N/A	JYW	JYW	JYW	JYW	JYW	JYW	JYW	JYW	N/A
24"	N/A	N/A	N/A	N/A	JYW	JYW	JYW	JYW	JYW	JYW	JYW	N/A	

● Standard size available    JYW Size available through JAY Your Way    N/A Size not available

# JAY J3®

The JAY J3® cushion provides outstanding stability and optimal pressure distribution for the client at high risk of skin breakdown, and offers the choice of JAY Flow® fluid or JAY® Air™ insert.

## Common Client Characteristics

- May be at high risk for skin breakdown
- May not be able to perform independent weight shifts
- May have changing postural needs over time
- May have aggressive positioning needs
- May be in a wheelchair for extended periods of time



### J3 Rating Scale

Side-to-Side Stability	5
Forward Stability	4
Pressure Management	4

Component	Feature	Design Intent	Clinical Value
BASE	Pre-contoured structural closed cell foam available in two depths	Provides lateral and forward stability that is easy to modify	Encourages orthopedic alignment, increases sitting tolerance and accommodates changing user needs
	Extensive variety of positioning components	Provides optimal stability	Encourages orthopedic alignment and accommodates individual user needs
	Configurable Pelvic Loading Area (PLA)	Lateral stability, forward stability, and pressure distribution	Encourages orthopedic alignment
INSERT	Optional JAY® Flow™ fluid pad available in Factory Filled (FF) and Field Variable (FV) options	Allows personalization of fluid levels direct from the factory or in the field to optimize immersion and accommodate asymmetric postures	Reduces risk of skin breakdown
	Optional JAY Air® insert available in single valve or dual valve options	Allows personalization of air levels to optimize immersion and accommodate asymmetric postures	Reduces risk of skin breakdown
COVER	Stretch outer cover	Reduces surface tension	Promotes proper immersion and reduces risk of skin breakdown
	Microclimatic outer cover	Dissipates heat and moisture	Reduces risk of skin breakdown
	Incontinence outer cover	Protects foam base from moisture build up	Helps with incontinence management

Technical Specifications	
HCPCS Code	E2622/3 & E2624/5
Width Range	12" to 24"
Depth Range	12" to 24"
Weight	4.5 lbs (16"x18" w/fluid) 2.9 lbs (16"x18" w/dual air)
Height	3.75" (loaded w/175 lbs)
Weight Capacity	500 lbs
JAY Your Way Modifications Avail.	Yes
Positioning	Yes

		WIDTH												
		12"	13"	14"	15"	16"	17"	18"	19"	20"	21"	22"	23"	24"
DEPTH	12"	●	JYW	●	JYW	N/A	N/A	N/A	N/A	N/A	N/A	N/A	N/A	N/A
	13"	JYW	JYW	JYW	JYW	N/A	N/A	N/A	N/A	N/A	N/A	N/A	N/A	N/A
	14"	●	JYW	●	JYW	JYW	JYW	JYW	JYW	JYW	JYW	JYW	JYW	JYW
	15"	JYW	JYW	JYW	●	●	●	JYW	JYW	JYW	JYW	JYW	JYW	JYW
	16"	JYW	JYW	●	●	●	●	●	●	●	JYW	JYW	JYW	JYW
	17"	JYW	JYW	JYW	●	●	●	●	●	JYW	JYW	JYW	JYW	JYW
	18"	JYW	JYW	●	JYW	●	●	●	●	●	●	●	●	●
	19"	JYW	JYW	JYW	JYW	JYW	JYW	JYW	JYW	JYW	●	●	●	●
	20"	JYW	JYW	JYW	JYW	●	JYW	●	●	●	●	●	●	●
	21"	JYW	JYW	JYW	JYW	JYW	JYW	JYW	JYW	JYW	●	●	●	●
	22"	JYW	JYW	JYW	JYW	JYW	JYW	JYW	JYW	JYW	●	●	●	●
	23"	N/A	N/A	N/A	N/A	JYW	JYW	JYW	JYW	JYW	JYW	JYW	JYW	JYW
24"	N/A	N/A	N/A	N/A	JYW	JYW	JYW	JYW	JYW	JYW	JYW	JYW	●	

● Standard size available    JYW Size available through JAY Your Way    N/A Size not available

# JAY GS®

The JAY GS® cushion incorporates a highly durable, stable foam base and JAY's proven fluid insert technology with the unique ability to grow with the client while maintaining proper support. An excellent solution for growing children and young adults.

## Common Client Characteristics

- May be at high risk for skin breakdown
- Require a firm postural base and moderate to aggressive postural control
- May have symmetrical or asymmetrical postures
- Accommodates changing needs
- May be in a wheelchair for an extended period of time.



### GS Rating Scale

Side-to-Side Stability	4
Forward Stability	3
Pressure Management	4

Component	Feature	Design Intent	Clinical Value
BASE	Contoured foam base with built-in growth	Provides lateral and forward stability that is easy to modify	Encourages orthopedic alignment, sitting tolerance, and accommodates individual user needs
	2" - 3" high positioning components including: Lateral pelvic, lateral thigh, and medial thigh supports.	Provides support of pelvis and lower extremities as needed	Encourages orthopedic alignment and accommodates individual user needs
	Configurable Pelvic Loading Area (PLA)	Provide growth options to support pelvis laterally and anteriorly	Growth opportunity to support pelvis as needed
INSERT	JAY Flow® Fluid Insert	Consistently ensures proper fluid placement by reducing fluid migration	Reduces risk of skin breakdown
COVER	Machine washable stretch cover with Ionic+™ Fiber and 3DX Spacer Fabric with waterfall seam on side of cushion	Reduces surface tension. Reduces moisture and bacterial growth. Seam on side reduces skin irritation	Helps prevent bacterial growth and reduces risk of skin breakdown

Technical Specifications	
HCPCS Code	E2622 & E2624
Width Range	10" to 18"
Depth Range	10" to 20"
Weight	6.9 lbs
Height	2.5" (w/o positioning components)
Weight Capacity	300 lbs
JAY Your Way Modifications Avail.	Yes
Positioning	Yes

		WIDTH									
		10"	11"	12"	13"	14"	15"	16"	17"	18"	19"
DEPTH	10"	●	JYW	N/A	N/A	N/A	N/A	N/A	N/A	N/A	N/A
	11"	●	JYW	N/A	N/A	N/A	N/A	N/A	N/A	N/A	N/A
	12"	●	JYW	●	JYW	N/A	N/A	N/A	N/A	N/A	N/A
	13"	●	JYW	●	JYW	N/A	N/A	N/A	N/A	N/A	N/A
	14"	N/A	JYW	●	JYW	●	JYW	N/A	N/A	N/A	N/A
	15"	N/A	JYW	●	JYW	●	JYW	N/A	N/A	N/A	N/A
	16"	N/A	N/A	N/A	JYW	●	JYW	●	JYW	N/A	N/A
	17"	N/A	N/A	N/A	JYW	●	JYW	●	JYW	●	JYW
	18"	N/A	N/A	N/A	N/A	N/A	JYW	●	JYW	●	JYW
	19"	N/A	N/A	N/A	N/A	N/A	JYW	●	JYW	●	JYW
	20"	N/A	N/A	N/A	N/A	N/A	N/A	N/A	JYW	●	JYW
	21"	N/A	N/A	N/A	N/A	N/A	N/A	N/A	N/A	N/A	N/A
	22"	N/A	N/A	N/A	N/A	N/A	N/A	N/A	N/A	N/A	N/A

● Standard size available    JYW Size available through JAY Your Way    N/A Size not available

# JAY DUO®

The JAY Duo® features an integrated, contoured solid seat pan with a soft foam and fluid seat cushion. The Duo provides optimal comfort and skin protection without affecting seat-to-floor height for the client at moderate risk of skin break breakdown, who requires mild positioning.

## Common Client Characteristics

- May be at low to moderate risk for skin breakdown
- May require mild symmetrical postural support at the pelvis and thighs
- May be in a wheelchair for extended periods of time



### Duo Rating Scale

Side-to-Side Stability	2
Forward Stability	3
Pressure Management	4

<b>BASE</b>	Contoured aluminum seat pan replaces sling upholstery	Reduces the seat height	Allows for easier foot propulsion and transfers
<b>INSERT</b>	Soft Foam Base with JAY Flow® Fluid	Encourage proper positioning of the pelvis and thighs. Consistently ensures proper fluid placement by reducing fluid migration	Reduces risk of skin breakdown
<b>COVER</b>	Every Duo cushion includes two suede covers	Protects foam base from moisture build up and is easy to clean	Helps with incontinence management

Technical Specifications	
HCPCS Code	E2603
Width Range	16" to 20"
Depth Range	16" to 18"
Weight	5.8 lbs (16"x16")
Height	2.5"
Weight Capacity	250 lbs
JAY Your Way Modifications Avail.	Yes
Positioning	Yes

		WIDTH					
		16"	17"	18"	19"	20"	21"
DEPTH	14"	N/A	N/A	N/A	N/A	N/A	N/A
	15"	N/A	N/A	N/A	N/A	N/A	N/A
	16"	●	●	●	N/A	●	N/A
	17"	N/A	N/A	N/A	N/A	N/A	N/A
	18"	●	●	●	N/A	●	N/A
	19"	N/A	N/A	N/A	N/A	N/A	N/A

● Standard size available    JYW Size available through JAY Your Way    N/A Size not available

# JAY J2® PLUS

The JAY J2® Plus, offering a weight capacity of 650 lbs, is a pre-contoured foam cushion that features a JAY Flow® fluid tripod for superior skin protection and an easy to modify base with optional positioning components for optimal stability.

## Common Client Characteristics

- May be at mild to moderate risk for skin breakdown
- May not be able to perform independent weight shifts
- May have aggressive positioning needs
- May be in a wheelchair for extended periods of time
- Designed for bariatric clients



### J2 Plus Rating Scale

Side-to-Side Stability	4
Forward Stability	3
Pressure Management	4

Component	Feature	Design Intent	Clinical Value
BASE	Pre-contoured base with mild leg trough cutouts and anterior slope that is easy to modify with 640lb capacity	Position pelvis, thighs, and accommodate as necessary	Encourages orthopedic alignment to increase sitting tolerance
INSERT	JAY Flow Fluid tripod	Ensures proper fluid placement beneath bony prominences by reducing fluid migration	Distributes pressure
	Visco Memory Foam Inserts	Visco foam may be layered to create combinations suitable for each client	For low risk of skin breakdown
COVER	Removeable Urethane Inner Cover	Protect foam base	Easy cleaning and protection of foam
	AirExchange cover	Promote airflow and dissipate heat and moisture	Decrease heat and moisture build for skin protection
	Low shear, moisture incontinence-resistant cover	Reduces friction and shear. Protects base and insert	Decrease slipping on cushion. Helps with incontinence management

Technical Specifications	
HCPCS Code	K0669
Width Range	20" to 26"
Depth Range	18" to 22"
Weight	7 lbs (20"x20")
Height	3.5"
Weight Capacity	650 lbs
JAY Your Way Modifications Avail.	Yes
Positioning	Yes

DEPTH	WIDTH						
	20"	21"	22"	23"	24"	25"	26"
18"	●	●	●	●	●	●	●
19"	●	●	●	●	●	●	●
20"	●	●	●	●	●	●	●
21"	●	●	●	●	●	●	●
22"	●	●	●	●	●	●	●
23"	N/A	N/A	N/A	N/A	N/A	N/A	N/A
24"	N/A	N/A	N/A	N/A	N/A	N/A	N/A



#### Technical Specifications

HCPCS Code	E2611/E2612
Width Range	12" to 26"
Height	10" to 14" (Short) 15" to 19" (Tall)
Weight	1.7 lbs (18" wide, Tall)
Weight Capacity	300 lbs 500 lbs (22-24" widths)
Avail. Hardware Styles	Velcro® back post attachment
Angle Adjustability	N/A
Width Adjustability	+2" to +4"
Fits Tubing Sizes	All
Head Support Mount Available	No
JAY Your Way Modifications Avail.	Yes

## JAY GO

The JAY® GO Back features an easy to install Velcro® strap assembly, Dartex® moisture-resistant cover and wide straps designed for adjustability, convenience, and support.

#### GO Back Rating Scale

Accommodating Postural Asymmetries	1
Modular Design for Evolving Presentations	1
Lateral Stability	1

#### Common Client Characteristics

- Has and meets payer's coverage criteria for a wheelchair
- May benefit from minimal posterior pelvic / thoracic support
- May prefer to not remove the back support in order to fold wheelchair for transport

Component	Feature	Design Intent	Clinical Value
STRAP ASSEMBLY	Wide Velcro® adjustment straps	Provide adjustable posterior pelvic stability	Support a larger surface area and discourage development of asymmetrical postures
FOAM	1 1/2" soft foam insert	Comfort	Promotes increased sitting tolerance
COVER	Dartex® coated Lycra® outer cover	Protects foam from moisture build up and is easy to clean	Helps with incontinence management
	Microclimatic cover	Dissipates heat and moisture	Reduces risk of skin breakdown



#### Technical Specifications

HCPCS Code	E2611
Width Range	14" to 20"
Height	16", 18", 20"
Weight	1.57 lbs (Strap) 3.61 lbs (Clamp)
Weight Capacity	250 lbs
Avail. Hardware Styles	4-Point or Strap
Angle Adjustability	10°
Width Adjustability	+1"
Fits Tubing Sizes	7/8" and 1"
Head Support Mount Available	No
JAY Your Way Modifications Avail.	No

## JAY BASIC

The JAY® Basic Back is designed to increase sitting tolerance and stability by adding a rigidizing component to the wheelchair that provides long-term postural support.

#### Basic Back Rating Scale

Accommodating Postural Asymmetries	1
Modular Design for Evolving Presentations	1
Lateral Stability	1

#### Common Client Characteristics

- Has and meets payer's coverage criteria for a wheelchair
- May benefit from mild posterior pelvic and thoracic support
- May require quick and easy removal of back shell from wheelchair

Component	Feature	Design Intent	Clinical Value
SHELL	Rigid contoured shell	Provides posterior pelvic and mild lateral thoracic stability	Helps prevent development of asymmetrical postures
FOAM	Soft foam insert	Enhances comfort	Promotes increased sitting tolerance
HARDWARE	Optional clamp style	Offers angle adjustability with minimal loss of seat depth	Improves visual field range, respiratory and digestive functions
	Optional strap style	Allows for easy installation and removal	Promotes increased sitting tolerance and stability
COVER	Stretch outer cover	Reduces surface tension	Promotes proper immersion and reduces risk of skin breakdown

# JAY ZIP®

The JAY Zip® is a lightweight, anti-microbial, and adjustable back designed to provide posterior and mild lateral thoracic support for active pediatric clients.

Technical Specifications	
HCPCS Code	E2613
Width Range	8" to 14"
Height	6" (Short)
	8" (Medium)
	10" (Tall)
	12" (Extra Tall)
Weight	2.5 lbs
Weight Capacity	165 lbs
Avail. Hardware Styles	2-Point
Angle Adjustability	20°
Width Adjustability	+1"
Fits Tubing Sizes	3/4" to 1"
Head Support Mount Available	Yes
JAY Your Way Modifications Avail.	Yes



### Zip Back Rating Scale

Accommodating Postural Asymmetries	3
Modular Design for Evolving Presentations	4
Lateral Stability	2

### Common Client Characteristics

- May require mild to maximum lateral stability
- May require moderate spinus process protection
- May require quick and easy removal of back shell from wheelchair
- May require mounting surface for head support
- May require additional positioning components (Spine Align)
- Designed for pediatric clients

Component	Feature	Design Intent	Clinical Value
SHELL	Contour designs that vary by backrest width	Provide appropriate posterior pelvic and lateral thoracic stability for pediatric clients	Promote proper postural positioning and help prevent development of asymmetrical postures while encouraging a greater level of independence
	Four support heights and shapes	Offer appropriate trunk support for pediatric clients with varying torso heights and levels of injury	Promote proper level of support based on client's functional needs and necessary trunk stability
FOAM	Extra soft foam insert	Enhances comfort and distributes pressure for pediatric clients	Increases sitting tolerance and reduces risk of skin breakdown
HARDWARE	One-step release hardware with 20° of angle adjustability, 3" of depth adjustment, and 1" of width adjustment	Accommodates rapid growth, varying user needs, and a wide range of wheelchair configurations	Increases visual orientation and improves digestion and respiratory function
INNER COVER	Inner cover with Aquaguard™ zipper and anti-wicking thread	Protects foam from moisture build-up and is easy to clean	Increases user comfort and sitting tolerance
OUTER COVER	3DX™ spacer fabric layer	Dissipates heat and moisture	Reduces risk of skin breakdown
	Ionic+™ silver thread stretch outer cover	Reduces surface tension and resists bacterial growth	Helps prevent bacterial growth and reduces risk of skin breakdown
	Optional colored covers	Allow for personalization	Allow for personalization
ACCESSORIES	Spine Align posture conforming inserts	Allow proper adjustment in the field to accommodate clients' unique and changing needs	Contour to individual shape and maximize loading surface
	Whitmyer® head support options	Provide posterior and lateral support of the head and neck	Increase visual orientation and improve speech, digestion, and respiratory function
	Lateral thoracic supports available with fixed, swing-away, or offset hardware and curved or flat pads	Provide lateral thoracic stability and positioning	Promote proper postural positioning and help prevent development of asymmetrical postures while encouraging a greater level of independence

# JAY J3®

The JAY J3® backrest product line offers a multitude of width, height, and contour depth back shells to fit the back to the user. Each back is lightweight and adjustable, with numerous hardware choices allowing for easy installation.



Technical Specifications	
HCPCS Code	E2613/E2614 (PA) E2615 (PL) E2620 (PD, PDL, PDC)
Width Range	12" to 26"
Height	6.5", 8", 9.5" (Lower Thoracic) 12", 13.5", 15" (Mid Thoracic) 16.5", 18", 19.5" (Upper Thoracic) 21", 22.5", 24" (Shoulder Height)
Weight Cap.	300 lbs (12" to 20" width) 500 lbs (22" to 26" width)
Available Hardware Styles	SH, RH/RHF, TH, 4-Point
Angle Adjust.	+/- 20°
Width Adjust.	+2"
Fits Tubing Size	3/4" to 1 1/8"
Head Support Mount	Yes (select heights)
JAY Your Way Modifications Available	Yes

### J3 Posterior (PA)

Accommodating Postural Asymmetries	3
Modular Design for Evolving Presentations	4
Lateral Stability	2

### J3 Posterior Lateral (PL)

Accommodating Postural Asymmetries	4
Modular Design for Evolving Presentations	4
Lateral Stability	3

### J3 Posterior Deep (PD) J3 Posterior Deep Lateral (PDL) J3 Posterior Deep Contour (PDC)

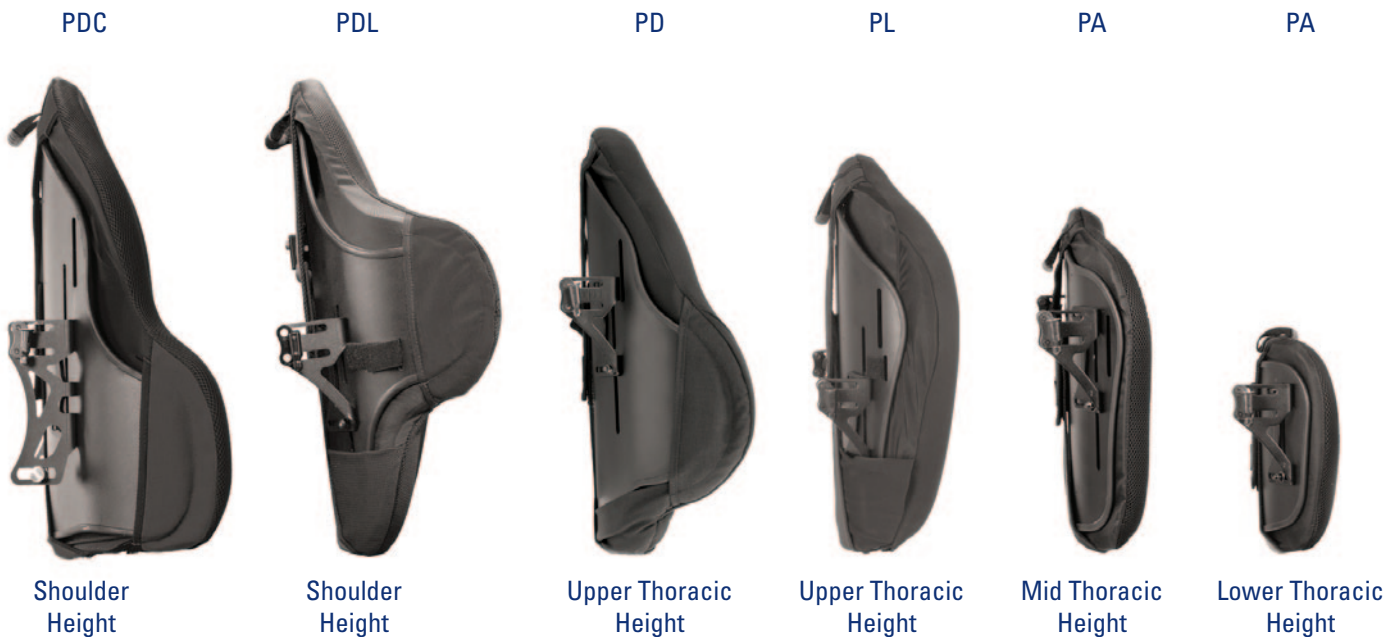
Accommodating Postural Asymmetries	4
Modular Design for Evolving Presentations	5
Lateral Stability	5

### Common Client Characteristics

- May require maximum posterior pelvic stability
- May require mild to maximum lateral stability
- May require moderate spinus process protection
- May require an open back angle to encourage trunk extension and visual orientation
- May require quick and easy removal of back shell from wheelchair
- May require mounting surface for head support
- May require additional positioning components (Spine Align)



Component	Feature	Design Intent	Clinical Value
SHELL	Five contour designs. Options include Posterior (PA), Posterior Lateral (PL), Posterior Deep (PD), Posterior Deep Lateral (PDL) and Posterior Deep Contour (PDC).	Provide posterior pelvic and lateral thoracic stability	Promotes proper postural positioning and helps prevent development of asymmetrical postures while encouraging a greater level of independence
	Up to 4 support heights and shapes dependent on contour shell selected. Options include lower thoracic, mid thoracic, upper thoracic or shoulder height.	Offers appropriate trunk support for a wide range of user torso heights and levels of injury	Promotes proper level of support based on client's functional needs and necessary trunk stability
	Optional Heavy Duty shell with 500 lb. weight capacity	Provides posterior pelvic and lateral thoracic stability	Promotes proper postural positioning and helps prevent development of asymmetrical postures while encouraging a greater level of independence
	Carbon Fiber shell	Provides a lighter weight option to complement ultra lightweight wheelchairs	Reduces overall weight of mobility system for increased propulsion efficiency
FOAM	1.5" thick, soft foam insert	Enhances comfort and distributes pressure	Increases sitting tolerance and reduces risk of skin breakdown
HARDWARE	4 Hardware options. RH-2-point option, optimized for use with ultra lightweight wheelchair. SH-standard 2-point option. TH-2-point option, optimized for the use with tilt-in-space wheelchairs. FS-4-point, heavy duty	Offer angle and width adjustability for a wide range of chair configurations and user needs	Increase visual orientation, and improve digestion and respiratory function
INNER COVER	Optional moisture-resistant inner cover	Protects foam from moisture build-up and is easy to clean	Increases user comfort and sitting tolerance
OUTER COVER	Microclimatic with 3DX™ Spacer Fabric and Lycra® stretch outer layer (additional options available through JAY® Your Way)	Dissipates heat and moisture and provides a smooth sitting surface	Reduces risk of skin breakdown and increases user comfort and sitting tolerance
ACCESSORIES	Spine Align posture conforming inserts	Allow proper adjustment in the field to accommodate clients unique and changing needs	Contour to individual shape and maximize loading surface
	CradleU Adjustable Fixed Lateral (fixed and swing-away lateral supports also available)	Adjusts the contour of the back to provide lateral thoracic stability and positioning for clients presenting with postural deviations or asymmetries	Promotes proper postural positioning and helps prevent development of asymmetrical postures while encouraging a greater level of independence
	Whitmyer® head support options	Provide posterior and lateral support of the head and neck	Increase visual orientation and improve speech, digestion, and respiratory function



# JAY J3<sup>®</sup> PLUS

The JAY J3<sup>®</sup> Plus is designed for the bariatric population and can accommodate up to 500 lbs in widths up to 26". Optional shell extension can pivot to accommodate redundant tissues.



Technical Specifications	
HCPSC Code	E2614
Width Range	22" to 26"
Height	12", 15", 18", 20", 21", 23"
Weight	2.5 lbs
Weight Capacity	500 lbs
Avail. Hardware Styles	2-Point
Angle Adjustability	20°
Fits Tubing Sizes	3/4" to 1"
Head Support Mount Available	Yes
JAY Your Way Modifications Avail.	Yes

### J3 Plus Rating Scale

Accommodating Postural Asymmetries	3
Modular Design for Evolving Presentations	4
Lateral Stability	2

### Common Client Characteristics

- May require mild to maximum lateral stability
- May require moderate spinus process protection
- May require quick and easy removal of back shell from wheelchair
- May require additional positioning components (Spine Align)
- Designed for bariatric clients

Component	Feature	Design Intent	Clinical Value
SHELL	Contour designs that vary by backrest width	Provide appropriate posterior pelvic and lateral thoracic stability for pediatric clients	Promote proper bariatric postural positioning and help prevent development of asymmetrical postures while encouraging a greater level of independence
	Four support heights and shapes	Offer appropriate trunk support for pediatric clients with varying torso heights and levels of injury	Promote proper level of bariatric support based on client's functional needs and necessary trunk stability
FOAM	Soft foam insert	Enhances comfort and distributes pressure for pediatric clients	Increases sitting tolerance and reduces risk of skin breakdown
HARDWARE	One-step release hardware with 20° of angle adjustability, 3" of depth adjustment, and 1" of width adjustment	Accommodates rapid growth, varying user needs, and a wide range of wheelchair configurations	Increases visual orientation and improves digestion and respiratory function
OUTER COVER	Microclimatic with 3DX™ Spacer Fabric and Lycra® stretch outer layer (additional options available through JAY® Your Way)	Microclimatic with 3DX™ Spacer Fabric and Lycra® stretch outer layer (additional options available through JAY® Your Way)	Reduces risk of skin breakdown and increases user comfort and sitting tolerance
ACCESSORIES	Spine Align posture conforming inserts	Allow proper adjustment in the field to accommodate clients' unique and changing needs	Contour to individual shape and maximize loading surface
	Whitmyer® head support options	Provide posterior and lateral support of the head and neck	Increase visual orientation and improve speech, digestion, and respiratory function
	Lateral thoracic supports available with fixed, swing-away, or offset hardware and curved or flat pads	Provide lateral thoracic stability and positioning	Promote proper bariatric postural support and help prevent development of asymmetrical postures while encouraging

# JAY J3<sup>®</sup> FORM

The JAY J3<sup>®</sup> Form is for individuals who require a more complex seating solution. J3 Form can be used when an off-the-shelf back cannot accommodate an individual's orthopedic asymmetries.



Technical Specifications	
HPCPS Code	E2617
Width Range	14" to 20"
Height	12", 15", 18", 20", 21", 23"
Weight	2.5 lbs (may vary)
Weight Capacity	300 lbs
Avail. Hardware Styles	2-Point
Angle Adjustability	20°
Fits Tubing Sizes	3/4" to 1"
Head Support Mount Available	Yes
JAY Your Way Modifications Avail.	Yes

### J3 Form Rating Scale

Accommodating Complex Postural Asymmetries	5
Modular Design for Evolving Presentations	5
Lateral Stability	5

### Common Client Characteristics

- May require mild to maximum lateral stability
- May require moderate spinus process protection
- May require quick and easy removal of back shell from wheelchair
- May require mounting surface for head support
- Designed for complex asymmetry clients

Component	Feature	Design Intent	Clinical Value
SHELL	Contour designs that vary by backrest width	Provide appropriate posterior pelvic and lateral thoracic stability for pediatric clients	Promote proper bariatric postural positioning and help prevent development of asymmetrical postures while encourag-
	Three support heights and shapes	Offer appropriate trunk support for pediatric clients with varying torso heights and levels of injury	Promote proper level of bariatric support based on client's functional needs and necessary trunk stability
FOAM	Form-in-place personalized mold	Enhances comfort and distributes pressure for pediatric clients	Increases sitting tolerance and reduces risk of skin breakdown
HARDWARE	4 Hardware options. RH-2-point option, optimized for use with ultra lightweight wheelchair. SH-standard 2-point option. TH-2-point option, optimized for the use with tilt-in-space wheelchairs. FS-4-point, heavy duty	Offer angle and width adjustability for a wide range of chair configurations and user needs	Increases visual orientation and improves digestion and respiratory function
OUTER COVER	Microclimatic with 3DX™ Spacer Fabric and Lycra® stretch outer layer (additional options available through JAY® Your Way)	Dissipates heat and moisture and provides a smooth sitting surface	Dissipates heat and moisture and provides a smooth sitting surface
ACCESSORIES	Whitmyer® head support options	Provide posterior and lateral support of the head and neck	Increase visual orientation and improve speech, digestion, and respiratory function
	Lateral thoracic supports available with fixed, swing-away, or offset hardware and curved or flat pads	Provide lateral thoracic stability and positioning	Promote proper bariatric postural support and help prevent development of asymmetrical postures while encouraging a greater level of independence

## JAY J2® / J2 TALL

The JAY J2® Back is designed to provide posterior lateral pelvic stability along with enhanced trunk stability. It is lightweight and angle adjustable allowing for easy installation, fitting and removal to fold the wheelchair.

Technical Specifications	
HCPCS Code	E2613
Width Range	12" to 20"
Height	12.5" to 16.5" (Std) 21" to 23" (Tall)
Weight	4.7 lbs
Weight Capacity	250 lbs
Avail. Hardware Styles	4-Point
Angle Adjustability	15°
Fits Tubing Sizes	7/8" to 1"
Head Support Mount Available	Yes
JAY Your Way Modifications Avail.	Yes



### J2 / J2 Tall Back Rating Scale

Accommodating Postural Asymmetries	2
Modular Design for Evolving Presentations	4
Lateral Stability	2

## JAY J2® DEEP CONTOUR

The JAY J2® Deep Contour Back is designed to provide posterior lateral pelvic stabilization along with enhanced trunk stability. It features a deep contoured shell, foam insert, AirExchange™ cover, two lateral support wedges, and personalized stability.

Technical Specifications	
HCPCS Code	E2620
Width Range	14" to 20"
Height	17" to 20"
Weight	5.9 lbs
Weight Capacity	250 lbs
Avail. Hardware Styles	4-Point
Angle Adjustability	15°
Width Adjustability	up to 2" w/offset hrdwr
Fits Tubing Sizes	7/8" to 1"
Head Support Mount Available	Yes
JAY Your Way Modifications Avail.	Yes



### J2 Deep Contour Back Rating Scale

Accommodating Postural Asymmetries	4
Modular Design for Evolving Presentations	4
Lateral Stability	5

# JAY J2<sup>®</sup> PLUS

The JAY J2<sup>®</sup> Plus Back is a bi-angular backrest specifically designed to address the pelvic and trunk stability needs of bariatric clients.

Technical Specifications	
HCPSC Code	E2613/E2614
Width Range	20" to 26"
Height	20.5"
Weight	11 lbs
Weight Capacity	650 lbs
Avail. Hardware Styles	Heavy Duty 4-Point
Angle Adjustability	15°
Width Adjustability	+3"
Fits Tubing Sizes	7/8" to 1-1/4"
Head Support Mount Available	Yes
JAY Your Way Modifications Avail.	Yes



### J2 Plus Back Rating Scale

Accommodating Postural Asymmetries	3	
Modular Design for Evolving Presentations	3	
Lateral Stability	2	

# JAY CARE

The JAY<sup>®</sup> Care Back was designed to accommodate a client with a fixed kyphotic thoracic spine by providing built-in lateral support, 39° of angle adjustability, and a configurable foam insert in a contoured shell.

Technical Specifications	
HCPSC Code	E2615
Width Range	15" to 20"
Height	16.5" to 19"
Weight	4.5 lbs
Weight Capacity	250 lbs
Avail. Hardware Styles	4-Point
Angle Adjustability	39°
Width Adjustability	+2"
Fits Tubing Sizes	7/8" and 1"
Head Support Mount Available	No
JAY Your Way Modifications Avail.	No



### Care Back Rating Scale

Accommodating Postural Asymmetries	5	
Modular Design for Evolving Presentations	2	
Lateral Stability	4	

## JAY FOCUS POINT

The JAY® Focus Point Back is a three-piece contoured backrest featuring a reinforced contoured aluminum shell, multi-adjustable lateral "wings," and a pelvic wedge for additional posterior pelvic support.

Technical Specifications	
HCPCS Code	E2620
Width Range	14" to 21"
Height	14" to 20"
Weight	8.69 lbs
Weight Capacity	250 lbs
Avail. Hardware Styles	4-Point
Angle Adjustability	65°
Width Adjustability	+1"
Fits Tubing Sizes	7/8", 1", 1-1/8"
Head Support Mount Available	Yes
JAY Your Way Modifications Avail.	No



### Focus Point Back Rating Scale

Accommodating Postural Asymmetries	3
Modular Design for Evolving Presentations	4
Lateral Stability	5

## JAY ENCOMPASS

The JAY® Encompass Back is a fully configurable seating solution that offers a wide range of sizes and specifications, including configured laterals and foam selections. Its three-piece swing-away laterals provide outstanding lateral and anterior stability without inhibiting the ability to transfer.

Technical Specifications	
HCPCS Code	E2617
Width Range	14" to 25"
Height	12" to 28"
Weight	8.0 lbs
Weight Capacity	250 lbs
Avail. Hardware Styles	4-Point
Angle Adjustability	15°
Width Adjustability	N/A
Fits Tubing Sizes	7/8" and 1"
Head Support Mount Available	Yes
JAY Your Way Modifications Avail.	No



### Encompass Back Rating Scale

Accommodating Postural Asymmetries	3
Modular Design for Evolving Presentations	4
Lateral Stability	5

# SCIENCE AND INNOVATION

Two innovative options available for JAY cushions.

## CRYO FLUID

**JAY Fluid with Cryo Technology** is an award-winning, revolutionary wheelchair cushion material that actively cools a patient's seated skin surface for up to 8 hours\* while evenly distributing pressure, reducing shear, and lowering the risk of moisture.

### How CryoFluid Works



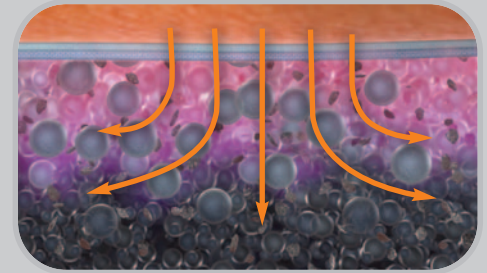
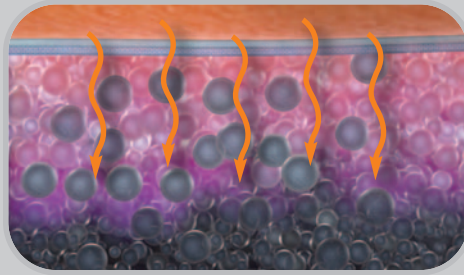
#### HEAT LEAVES SKIN SURFACE, COOLING THE SKIN

JAY Fluid with Cryo Technology features millions of microbeads filled with paraffin wax that melt at a set temperature. Because skin is warmer than the ambient temperature of the CryoFluid, heat from the skin is actively transferred into the fluid and causes the beads to melt. This results in a lower seated skin temperature within the therapeutic range.



#### A LONG LASTING EFFECT

In addition to the millions of microbeads, JAY Fluid with Cryo Technology also utilizes graphite to effectively disperse heat throughout the fluid. This heat dispersion continues to pull heat from the skin until all microbeads have melted, resulting in a therapeutic cooling effect which can last up to 8 hours\*. The CryoFluid microbeads will naturally re-solidify after the fluid returns to ambient temperature.



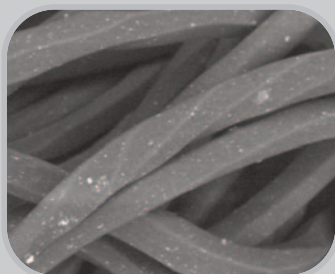
\* Internal testing data at 25°C. Results may vary.

## ionic+

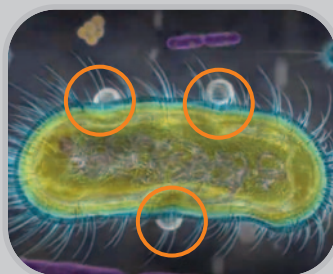
**IONIC+**™ metalized yarn and fiber (previously know as X-STATIC) offers strong antimicrobial protection for soft fabric surfaces. 99.9% pure silver is permanently bonded to the surface of fiber, filament, fabric, or foam. The natural power of positively charged ions can eliminate microbes, bacteria, mold, viruses, and odor on textiles.

### How ionic+ Works

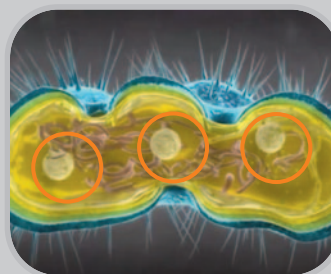
The silver threads woven into the ionic + fabric release positive ions in the presence of moisture. This action helps inhibit and eliminate microbes on the surface of the material. The process is certified Oeko-tex standard 100, and is harmless to humans.



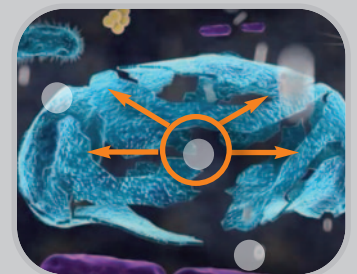
Positive ions extruded into fiber or filament.



Positive ions penetrate negative ions of microbe.



Ions destroy microbe's DNA stopping all replication.



The elimination of micro organisms is beneficial.

# OPTIONS AND ACCESSORIES

Please see the product pages for detailed standard availability.

## COVERS

The following cover options are available on select products through the JAY Your Way modification program.

### INNER COVER

- Designed to be used underneath outer JAY® cover
- Stretchable Lycra® reduces surface tension
- Polyurethane coating is easy to wipe off and clean
- Aquaguard zipper and anti-wicking seam thread prevent moisture from damaging the foam base

### JAY STRETCH ZIPPER COVER

- Pleated, 4-way Stretch material reduces surface tension
- Zipper provides a secure fit and protection for the foam base



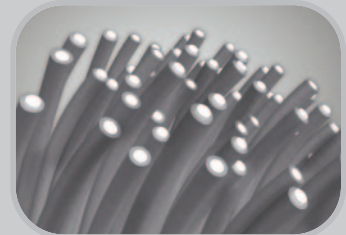
### INCONTINENT RESISTANT SHOWER CAP OR ZIPPER COVER

- Semi-plastic coating can be wiped off and dried to prevent moisture build-up
- Semi-plastic coating prevents moisture from damaging the foam base
- Shower Cap edge makes cover easy to remove
- Zipper provides a secure fit and protection for the foam base



### IONIC+™ COVER WITH BREATHABLE SPACER FABRIC

- Silver-impregnated material inhibits bacterial growth
- 4-Way stretch reduces surface tension
- Breathable Spacer Fabric promotes airflow



### DARTEX® COVER WITH AQUAGUARD™ ZIPPER

- Cloth surface prevents sliding
- 4-Way Stretch reduces surface tension
- Dartex® coating and Aquaguard zipper prevent moisture from damaging the foam base



### REVERSE DARTEX® COVER WITH AQUAGUARD ZIPPER

- Water-resistant Reverse Dartex® coating is easy to wipe off and clean
- 4-Way Stretch reduces surface tension
- Aquaguard zipper prevents moisture from damaging the foam base



## ACCESSORIES

### JAY LUMBAR SUPPORT

- Provides mild support of the lumbar spine
- +Helps reduce lower back fatigue and increase sitting tolerance



### JAY SOLID SEAT

- Improves posture by providing a firm, fully adjustable base of support
- Drop seat option
- Includes mounting hardware



### JAY PROTECTOR

- Provides pressure reduction on a limited basis while the user is sitting or moving about away from the wheelchair
- Fluid-filled cushion helps reduce pressure while foam base assists in stable sitting





# OPTIONS AND ACCESSORIES

Please see the product pages for detailed standard availability.

## BACK HARDWARE

### TWO-POINT/SH

- One attachment point on each back cane
- Simple and quick installation
- Numerous mounting options along back canes
- Quick release



### RH / RHF\*

- One attachment point on each back cane
- Lightest hardware solution at .8 lbs (quick-release)
- Quick-release and fixed options available



### TH\*

- One attachment point on each back cane
- Lengthened bracket and pin accommodate up to 500 lbs.
- Perfect complement for tilt-in-space wheelchairs



\*Available exclusively on J3 Back.

### FOUR-POINT/FS

- Two attachment points on each back cane
- Withstands greater force and weight by distributing it across a wider area
- Provides rigid mount to wheelchair
- When combined with a Heavy Duty back shell, accommodates increased weight capacities



### STRAP

- One strap on each side
- Cloth straps click around back posts for easy installation
- Used with the wheelchair's back upholstery



## LATERAL SUPPORTS

### FIXED

- Provides personalized lateral thoracic support
- Width and height adjustable



### SWING-AWAY

- Provides personalized lateral thoracic support
- Width and height adjustable
- Swing-away hardware allows for easy transfers out of the wheelchair



### ANGLE-ADJUSTABLE SWING-AWAY

- Provides personalized lateral thoracic support
- Width and height adjustable
- Swing-away hardware allows for easy transfers out of the wheelchair
- Angle adjustability provides the most precise shape to match the user's posture



### CRADLE U®

- Provides personalized lateral thoracic support for clients with postural or spinal deviations
- Adjusts the existing contour of the JAY J3 back to match the client's unique shape
- Intuitive design attaches directly to the back shell beneath the foam
- Support plates adjust in angle to match the user's torso



# JAY POSITIONING SUPPORTS

For specific positioning needs, choose from JAY's portfolio of Positioning Supports to complement your JAY cushion and back.



## HEAD Positioning

**Head Supports** using our portfolio of **Whitmyer® Headrests** provide posterior, lateral, and occasionally anterior support of the head and neck for clients who may have difficulty maintaining an upright head posture or are using tilt-in-space wheelchairs. Options include numerous pad styles and configurations, six mounting hardware styles, and three cover materials for thousands of possible head support configurations to meet your client's needs.



## UPPER BODY Positioning

**Anterior Trunk Supports** encourage an upright posture and support the torso for improved respiratory function, head positioning, and upper extremity control. Options include six support styles and either structured or dynamic construction.

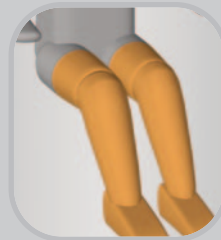


**Hand & Arm Supports** help maintain a comfortable and optimal position of the hands and arms for improved upper body posture and head control, and reduce the risk of skin breakdown.



## PELVIC Positioning

**Pelvic Positioning Belts** help encourage and maintain a stable and aligned pelvis, which impacts the positioning of the entire body. Options include varying styles and sizes, single- or dual-pull adjustments, and push button or side release buckles for ease of use.



## LOWER BODY Positioning

**Shoe Holders** help maintain positioning of the feet and ankles, broadening the seating "footprint", and improving overall posture.



**Foot Boxes** reduce the risk of skin breakdown and/or client injury that may result from periods of high tone or continual contact with the hangers and footplates.



# GLOSSARY OF TERMS

The following is a glossary of terms that will aid in understanding terminology used in the rehab field and in this JAY catalog.

## Activities of Daily Living

Daily activities performed by an individual in the home and/or outdoor environments. The ability or inability to perform these activities is commonly used as a means to measure an individual's function.

## Anthropometric Data

Relating to the measurement of the size and proportions of the human body. Used in seating technology to determine foam firmness as it relates to cushion width.

## Bony Prominence

Area of body where bone is projected. Common sites for soft tissue breakdown. May include the coccyx, ischial tuberosities or sacrum.

## Bottoming Out

A condition that occurs when a client's tissue under the bony prominence displaces or compresses through the pressure-relieving material to an underlying hard surface.

## Braden Scale

A validated risk assessment tool used to identify individuals at risk to develop pressure sores.

## Coccyx

Commonly referred to as the tailbone, the coccyx is the lowest point of the vertebral column.

## Decubitus Ulcer

**(also referred to as pressure sores or bedsores)**

A skin lesion caused by such factors as unrelieved pressure, shearing, humidity, etc., most commonly seen over bony areas such as the ischial tuberosities. Decubitus ulcers are often preventable and very difficult to treat.

## Immersion

The ability of the user to sink into a sitting surface for optimal pressure distribution and stability without increasing surface tension.

## Ischial Tuberosity

Two bony prominences (seat bones) in the buttocks.

## Lateral Thigh Support

Helps prevent high excessive or unwanted abduction of the hips or provides a counterpoint for control of hip external rotation.

## Lateral Trunk Support

Helps provide lateral support to the thoracic spine.

## Medial Thigh Support

Helps maintain the hips of the seated individual in a prescribed amount of abduction or prevents adduction of the hips.

## Pelvic Loading Area

**(also referred to as PLA, OptiWell, or well)**

The pre-contoured area of a cushion where the pelvis is immersed. The Pelvic Loading Area, or well, is important for pressure distribution and positioning.

## Pelvic Obliquity

One side of the pelvis is lower than the other.

## Pressure

Force/area.

## Posterior Pelvic Tilt

Backward tilting of the top of the pelvis.

## Sacrum

Lowest section of the spine, includes the coccyx and posterior aspect of the pelvis.

## Scapula

The flat, triangular bone in the back of the shoulder (shoulder blade).

## Shear

Friction that occurs when skin slides along the surface of a cushion. This Irritation can result in skin breakdown.

## Sitting Tolerance

The ability of an individual to remain in a comfortable seated position. Discomfort and pain can reduce sitting tolerance.

## Thoracic Kyphosis

The outward curvature of the thoracic spine.

## Trochanter

The bony prominence in the upper femurs where the hip connects with the pelvis.

JAY® Your Way is a modification program designed to deliver the benefits of modified seating with the ease of ordering standard JAY products.

From clinical improvements to colored covers and shells, JAY Your Way modifies cushions and backs specifically to address unique individual needs and preferences.

Common modifications for cushions, fluid inserts, covers, backrests and positioning products can be ordered simply, and most modifications are made at no additional charge.

With JAY Your Way, JAY products are easily modified to meet your clients' needs and individual styles.



SFC (Retired) Mark H. U.S. Army 3rd Special Forces Group