

Table of Contents

Important Notes	3
Heavy Duty Tether Anchor Parts List and Materials Needed	4
Heavy Duty Tether Anchor Installation	5
Attachment Bracket Assembly Parts List	10
Attachment Bracket Assembly Installation	12
Limited Warranty	14

Important Notes

NOTE: The Churchill is designed for use in vehicles equipped with lower anchors. In general, vehicles that are 2003 and newer do have the lower anchors. The Attachment Bracket Assembly is designed for use in older vehicles that are not equipped with lower anchors. Please refer to your vehicle owners manual to determine if your vehicle is equipped with lower anchors.

NOTE: Only use this Attachment Bracket Assembly with the Churchill.

NOTE: This instruction booklet describes the steps necessary to install the Attachment Bracket Assembly in vehicles that are not equipped with lower anchors.

NOTE: To use this product, you must have access to the seat bite from behind the selected vehicle seat (See arrow, Figure A).



Heavy Duty Tether Anchor Parts List and Materials Needed

Part's List



Materials Needed

- 3/8" Drill with 7/16" Drill Bit
- 5/8" Wrench
- 11/16" Wrench
- "Blue" or "red" LOCTITE

Heavy Duty Tether Anchor Installation

NOTE: We strongly recommend that the heavy duty tether anchor installation steps on pages 5-9 are performed by a mechanic at an adaptive mobility shop, conversion van facility, or comparable establishment.

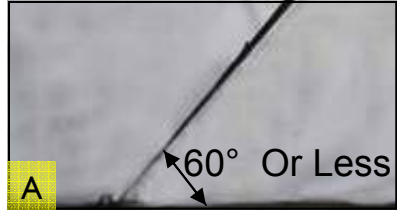
1. Determine the seating position in which you will install the Churchill.
2. Verify that you have access to the seat bite from behind the selected vehicle seat in which to insert the attachment bracket (See Arrow, Figure A).



3. Inspect the area behind the selected vehicle seat to determine the appropriate anchor location according to the following parameters:
 - The hole must be drilled through a plate in the floor that is structurally sound.
 - The anchor cannot be placed within 1 ½" of any other holes.
 - The anchor should be placed central to the installed Churchill, and shall not deviate from its centerline by more than 15 degrees.

Heavy Duty Tether Anchor Installation, Cont.

- The angle shown in Figure A, between the attachment bracket webbing and the floor of the vehicle, must be 60 degrees or less.



4. After deciding where to place the tether anchor, mark the appropriate spot for the hole to be drilled.
5. Inspect the underside of the vehicle to verify that there are no vehicle components (transmission lines, brake lines, gas tank, etc.) in the way of the hole to be drilled.

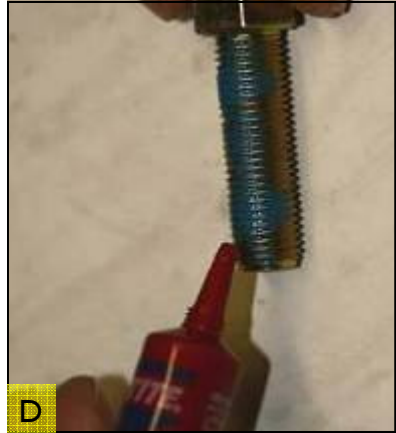


6. Drill a 7/16" hole completely through the floor board as shown in Figures B and C.



Heavy Duty Tether Anchor Installation, Cont.

7. Apply a thin layer of “blue” LOCTITE to the bolt’s threads (Figure D) to prevent loosening of the bolt from vibration. “Red” LOCTITE may be used instead, but will cause the assembly to be very difficult to remove.
8. Place the small (15/16” OD) washer and tether anchor bracket over the 7/16” bolt as shown in Figure E.
9. From inside the vehicle’s interior (or trunk if applicable), insert the bolt, with washer and bracket, (Figure F) through the hole drilled in Step 6.



Heavy Duty Tether Anchor Installation, Cont.

NOTE: For Steps 10-13, an additional person (located inside the vehicle) must hold a 5/8" wrench securely over the head of the bolt (Figure G).

10. From underneath the vehicle place the large (2 3/8" OD) washer over the shaft of the bolt (Figure H).

11. Screw the nut onto the shaft as far as possible by hand (Figure H).

12. Continue to screw the nut onto the shaft using an 11/16" wrench (Figure I) until just before the washer "seats" against the surface of the vehicle.

13. Use a torque wrench to tighten the nut to a value between 35 and 50 ft-lbs.

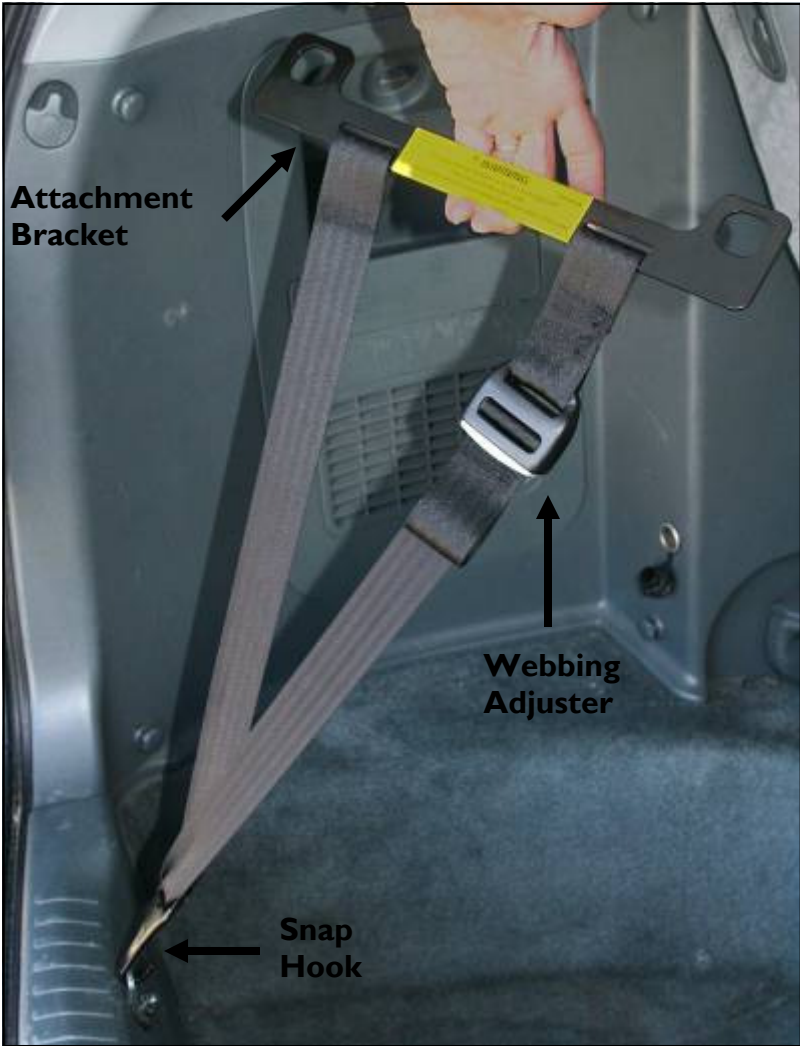


Heavy Duty Tether Anchor Installation, Cont.

14. Use appropriate caulking, or similar sealant, to seal around the head of the bolt and bracket, as well as around the nut and washer underneath the mounting plate, to prevent exhaust fumes from entering the vehicle.

Warning: If the heavy duty tether anchor is ever removed, then the hole must be plugged and sealed to prevent exhaust fumes from entering the vehicle.

Attachment Bracket Assembly Parts List



Attachment Bracket Assembly Installation

1. Connect the snap hook on the attachment bracket assembly to the tether anchor that was installed according to the steps on the previous pages (Figure A).



2. Grasp the attachment bracket (Figure B) and (without twisting the webbing) insert it through the vehicle seat bite to the front of the seat (Figures C and D, opposite page).



Attachment Bracket Assembly Installation, Cont.

3. Connect each of the Churchill's lower anchor snap hooks to its corresponding hole in the attachment bracket (Figure D).



4. From the back of the vehicle seat, grasp the webbing loop (Figure E) and pull until the Churchill is installed snugly against the vehicle seatback (Figures F and G).



5. Continue installing the Churchill as described in the "Instructions for Use Manual".



6. To uninstall the attachment bracket assembly, simply remove the Churchill per the Churchill's "Instructions for Use" manual, pull the attachment bracket through to the back side of the vehicle seat, and disconnect the snap hook from the tether anchor.



Limited Warranty

Merritt Manufacturing, Inc. (Merritt) provides the following limited warranty on the Churchill:

Merritt warrants to the original purchaser of the Churchill that, if properly used strictly in accordance with the instructions and specifications included in the original packaging, it shall be free from defects in materials or workmanship for a period of one (1) year from the date of original purchase. Proof of purchase is required, including, but not limited to furnishing to Merritt proof that the owner registration card was returned to Merritt within thirty days of the original purchase or furnishing to Merritt proof of purchase that identifies the claimant as the original purchaser. If any component covered by this warranty fails for reasons covered by this warranty, Merritt will, at its option, provide the original purchaser with repair or replacement components for the covered product or component. This limited warranty is available only for purchasers in the United States and Canada. Merritt reserves the right to discontinue or change fabrics, parts, models or products, or to make substitutions. Please note that the upholstery fabric is subject to some degree of wear as a result of normal use. This kind of normal wear is not covered under warranty.

To make a claim under this warranty, you must contact Merritt via telephone at (317) 409-0148 or write to the company using the address on the back cover of this booklet. PLEASE COMPLETE AND MAIL THE OWNER REGISTRATION CARD WITHIN THIRTY DAYS OF PURCHASE TO PRESERVE YOUR WARRANTY RIGHTS.

WARRANTY LIMITATIONS

This warranty does not include damages due to external sources, including, but not limited to accident, negligence, misuse, neglect, alteration, repair, improper installation, improper testing or use that is not in conformance with the instructions and specifications in the instruction booklet.

LIMITATION OF LIABILITY AND DAMAGES

THE WARRANTY AND REMEDIES SET FORTH ABOVE ARE THE SOLE AND EXCLUSIVE REMEDIES AND ARE PROVIDED IN LIEU OF ALL OTHERS, ORAL OR WRITTEN, EXPRESS OR IMPLIED. IN NO EVENT WILL MERRITT, OR THE RETAILER/DISTRIBUTOR SELLING THIS PRODUCT, BE LIABLE TO THE PURCHASER, OR ANY USER OF THIS RESTRAINT OR OTHER THIRD PARTY, FOR ANY DAMAGES; INCLUDING LOST PROFITS, LOST BUSINESS, INCIDENTAL, INDIRECT, SPECIAL, CONSEQUENTIAL DAMAGES OR PUNITIVE DAMAGES. IN NO EVENT SHALL MERRITT OR ITS AFFILIATED COMPANIES BE LIABLE OR RESPONSIBLE FOR ANY

Limited Warranty, Continued

AMOUNT OF DAMAGES ABOVE THE AGGREGATE DOLLAR AMOUNT PAID BY THE CUSTOMER FOR THE PURCHASE OF THE PRODUCT COVERED BY THIS WARRANTY.

LIMITATIONS OF WARRANTIES AND OTHER WARRANTY TERMS AND STATES' LAW

MERRITT FULLY DISCLAIMS AND MAKES NO IMPLIED WARRANTIES OF ANY KIND, INCLUDING, BUT NOT LIMITED TO IMPLIED WARRANTIES OF MERCHANTABILITY AND FITNESS FOR A PARTICULAR USE, AND MAKES NO EXPRESS WARRANTIES BEYOND THOSE STATED HERE. NOTWITHSTANDING THE FOREGOING, IF ANY IMPLIED WARRANTIES ARE DEEMED TO BE GIVEN BECAUSE THE APPLICABLE LAW PROHIBITS THEIR EXCLUSION, THEN ANY SUCH IMPLIED WARRANTIES, INCLUDING IMPLIED WARRANTIES OF MERCHANTABILITY AND FITNESS FOR A PARTICULAR PURPOSE, SHALL BE LIMITED TO THE DURATION AND TERMS OF THE EXPRESS WRITTEN WARRANTY. SOME STATES DO NOT ALLOW THE LIMITATION OF IMPLIED WARRANTIES, LIMITATIONS ON HOW LONG AN IMPLIED WARRANTY LASTS OR THE EXCLUSION OR LIMITATION OF INCIDENTAL OR CONSEQUENTIAL DAMAGES. THEREFORE, IN THOSE STATES, THE LIMITATIONS LISTED ABOVE MAY NOT APPLY TO YOU. THIS WARRANTY AFFORDS YOU WITH SPECIFIC LEGAL RIGHTS AND YOU MAY HAVE ADDITIONAL RIGHTS, DEPENDING ON THE STATE IN WHICH YOU RESIDE.

BINDING ARBITRATION

Any dispute, controversy or claim (whether in contract, tort or otherwise, whether pre-existing, present or future, and including statutory, common law, intentional torts and equitable claims) against Merritt, its agents, employees, successors, assigns or affiliates (collectively for purposes of this warranty, "Merritt"), arising from or relating to this warranty and agreement, its interpretation, or the breach, termination or validity thereof, the relationships which result from this warranty and agreement (including, to the full extent permitted by applicable law, relationships with third parties who are not parties to this warranty and agreement), SHALL BE RESOLVED EXCLUSIVELY AND FINALLY BY BINDING ARBITRATION ADMINISTERED BY THE AMERICAN ARBITRATION ASSOCIATION under its code of procedure then in effect. Any award of the arbitrator shall be final and binding on each of the parties and may be entered as a judgment in any court of competent jurisdiction. Information for submitting claims with the American Arbitration Association may be obtained at www.adr.org.