



## **MUSHROOM KOTTAGE ASSEMBLY PLAN**

- Place the platform flat on the floor.



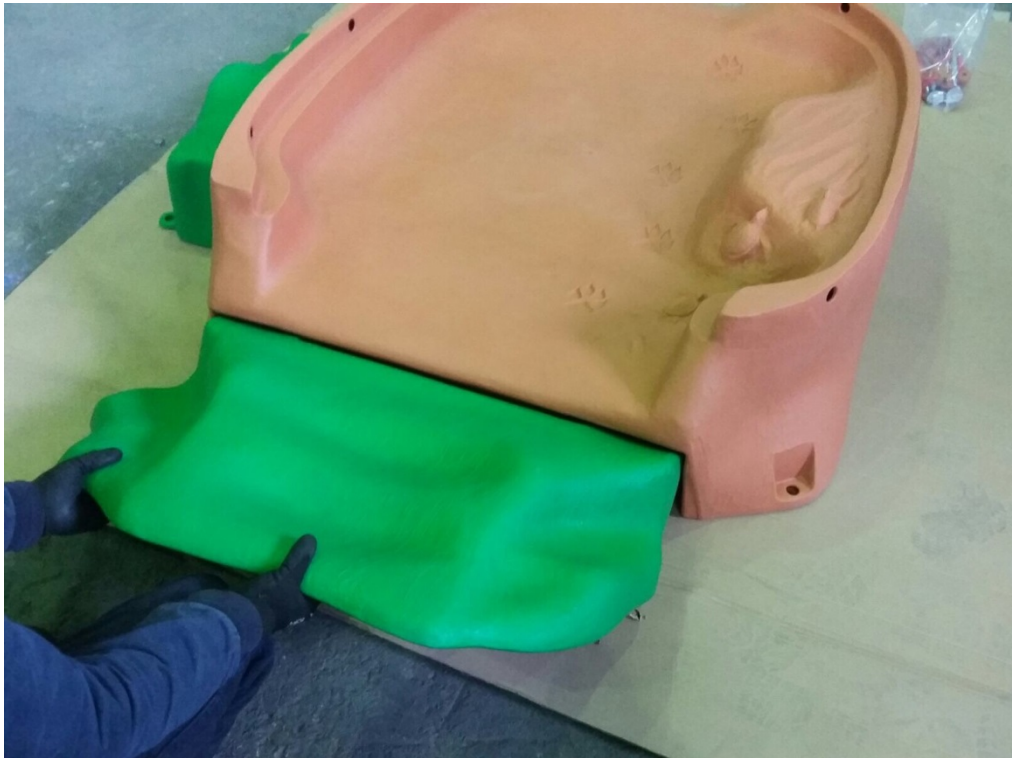
- Slightly lift the platform and place it on the ledge in the entrainment platform on the bench.



- Slightly lift the platform and place the ledge in the recessed platform on the slide.



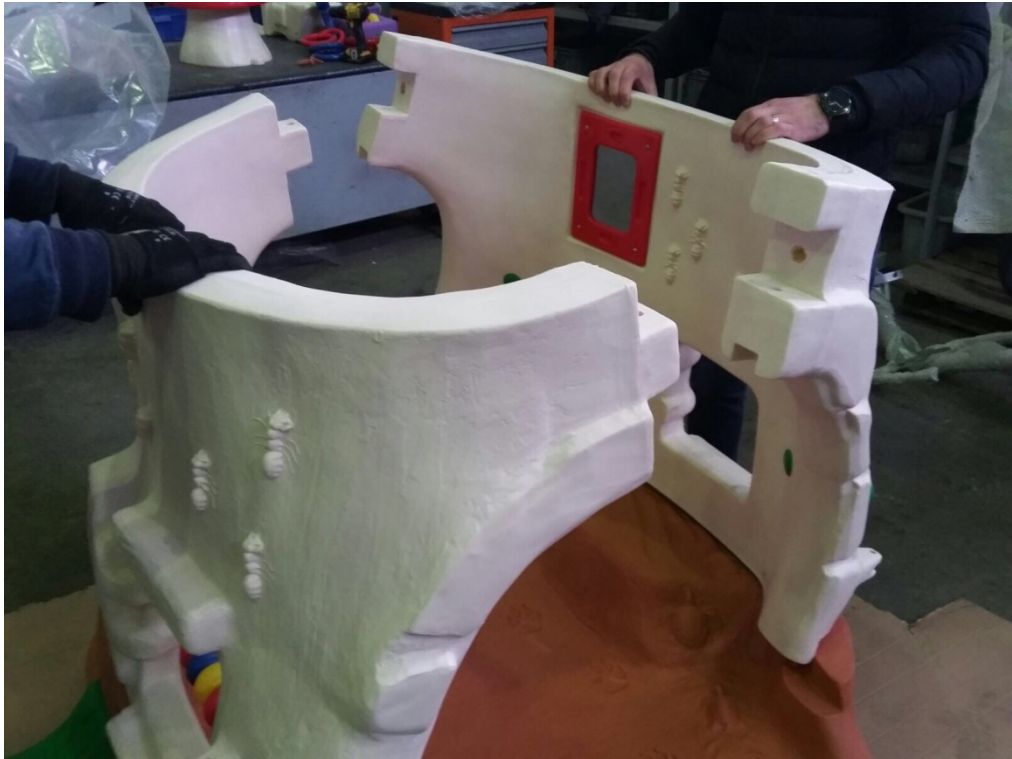
- Lift the platform lightly and place it on the ledge in the intrusion platform located on the ladder.



- Place the wall where the phone and abacus are located on the bank.



- Place it against the second wall.



- Make sure that 3 holes under each wall come in line with the platform holes. Place the plastic nut and bolt in a total of 6 holes facing each other.

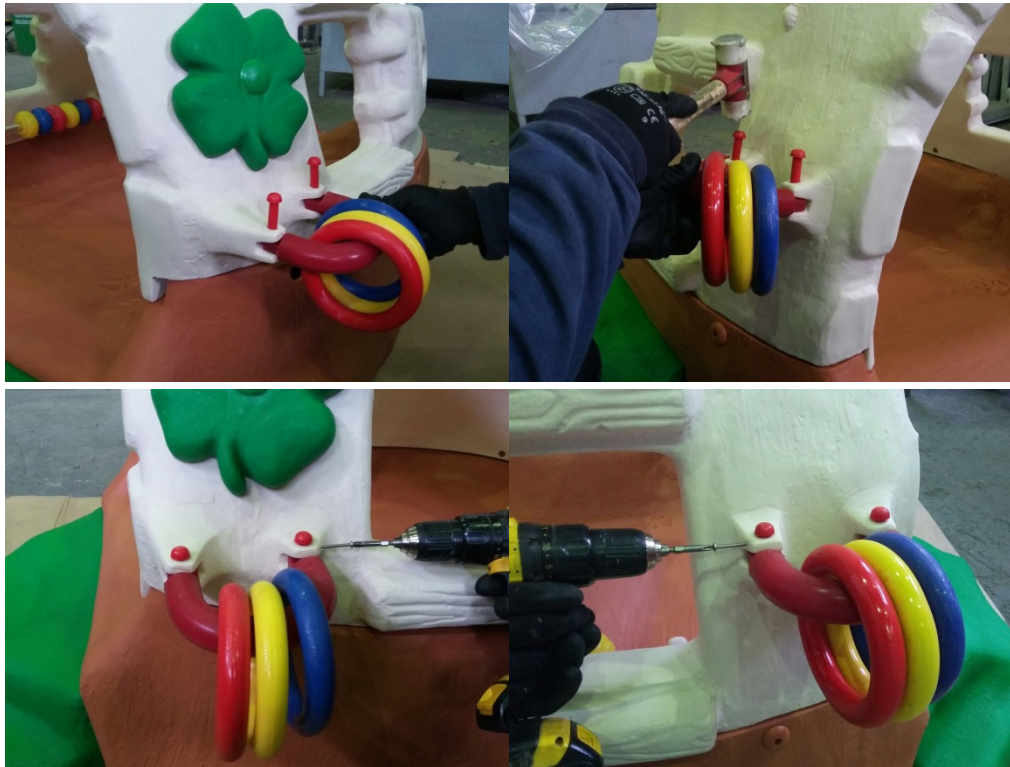




- Tighten the plastic nuts and bolts. Use L key switch for this operation. (Do not squeeze the nut too much. Just enough to hold the walls in place will suffice.)



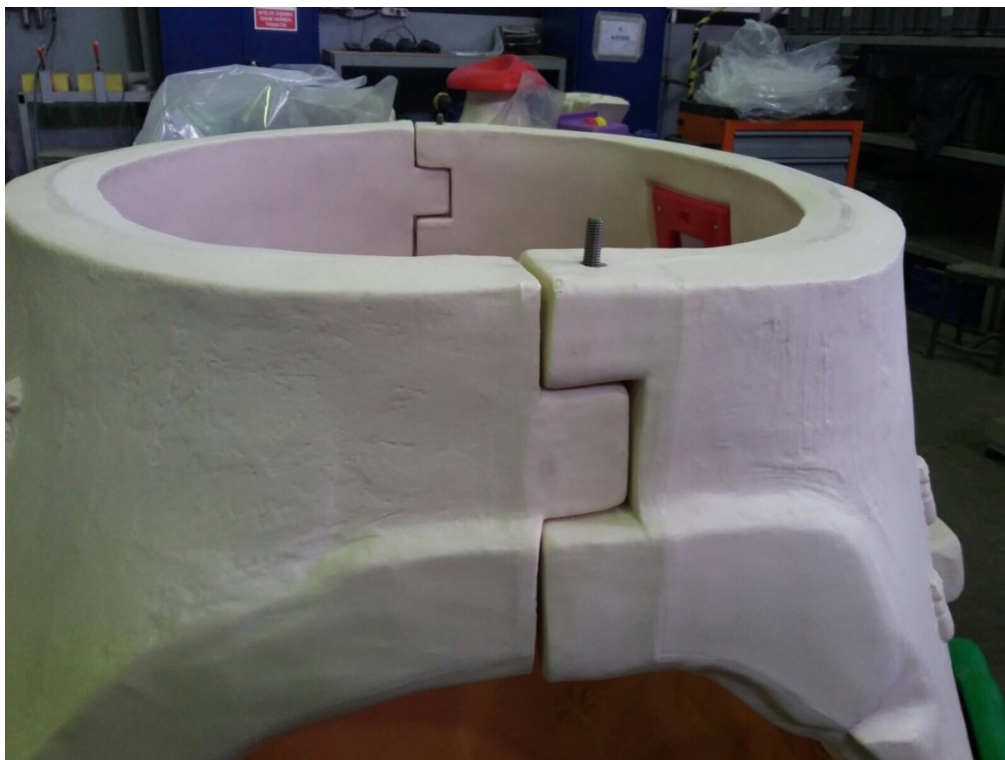
- Wear toy circles rubber half circle. Pass the rubber semi-circles to the recess in the Right and Left wall. Red colored plastic plugs. Finally fix it with 4.2x32 screws.



- Place the mail box in the slot on the wall, then secure it with 4.2x32 screws. Install plastic bayonet pins in the connection holes.



- Place the two walls in such a way that the recesses and protrusions fit together.
- Attach the M10x250 to the M12x250 Liquor Bolts by inserting the M10 washer in such a way that they pass through the two wall holes from top to bottom. The bolt will stay on the wall for the longest roof connection.



- Place on roof walls.
- The heart on the roof will be in the direction of the stairs
- In the previous step, place each of the two walls in a way that matches the roof holes that you have passed.



- On the roof there is a hole already opened to make roof connection under the heart and leaf
  - Insert your hand into this hole and tighten the bolt with 10x40 washers and M10 nut.



- Insert your hand into this hole and tighten the bolt with 10x40 washers and M10 nut.

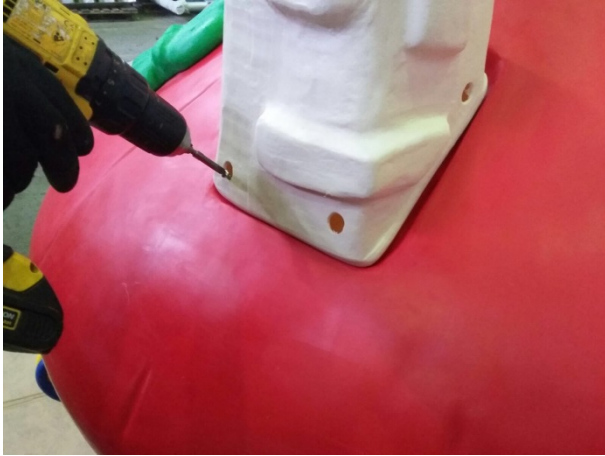


- Put it on top of the leaf frame so that it matches one with the convex height, then turn it over, then secure it with 4.2x32 screws.





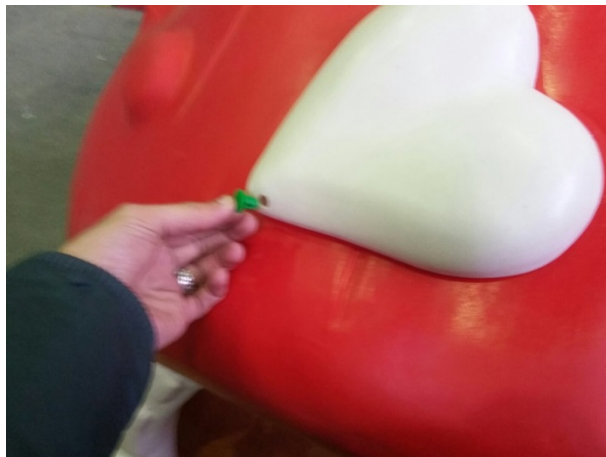
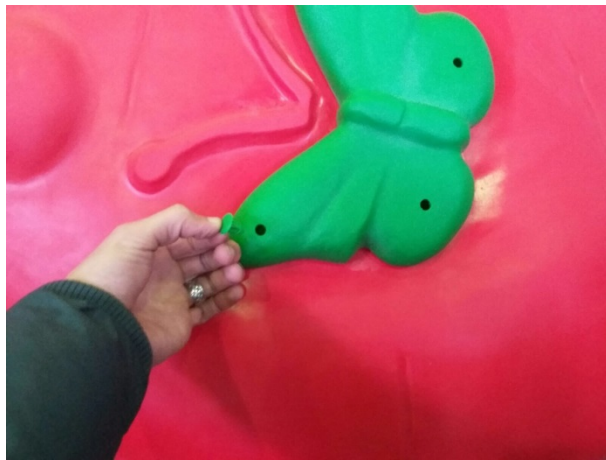
- Place it on the top of the chimney frame, then secure it with 4.2x32 screws. Install plastic bayonet pins in the connection holes.



- Place it in the slot on the window frame, then secure it with 4.2x32 screws. Install plastic bayonet pins in the connection holes.



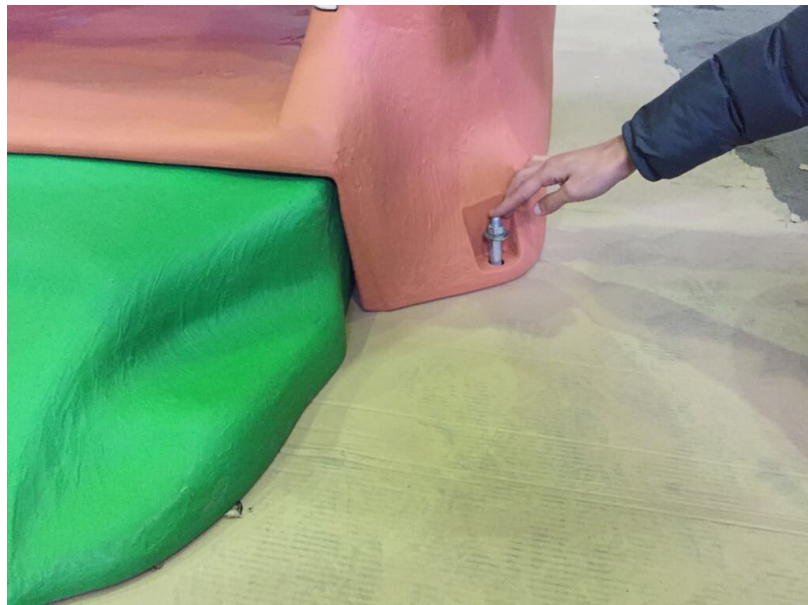
- Attach 4 mm plastic plugs to the connection holes of the butterfly, heart and bladder.



- Place the phone on the hook on the inside of the wall.



- Use nails or dowels to secure the holes in the platforms, benches and stools. So you have fixed the product as a whole.
- The fungal home stool should be placed at least 1.5 m away from the play area.



- You have completed the installation.

