

Owner's Manual

FreshSpa Comfort+ BIDET ATTACHMENTS

- FSR-15 Ambient Temperature
- FSR-25 Dual Temperature

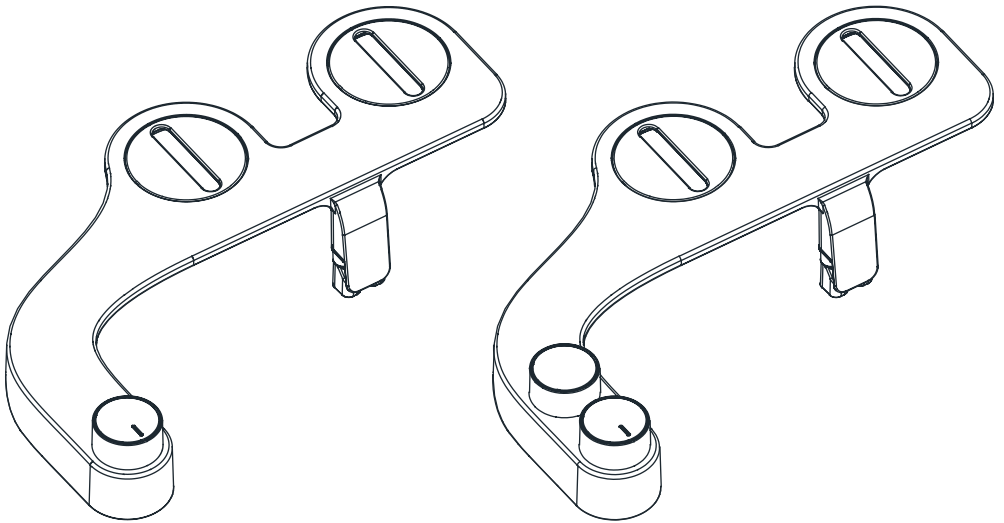


Table of Contents

This manual contains important safety information. Before operating your FreshSpa Comfort+ bidet attachment, please read this manual thoroughly and retain it for future reference.

GENERAL INFORMATION

- 01 PRODUCT INFORMATION
- 01 Product Features
- 02 Product Dimensions
- 03 Product Parts

TECHNICAL INFORMATION

- 11 MAINTENANCE
- 12 PRODUCT SPECIFICATIONS
- 13 WARRANTY
- 14 CONTACT

PRODUCT INSTALLATION

- 04 PRODUCT INSTALLATION
- 04 Before Installation
- 05 Installation
- 06 Connecting the Hot Water Supply
- 07 Installing the Bidet Attachment

TRANSLATIONS

- 01 ENGLISH
- 15 SPANISH
- 30 FRENCH

PRODUCT OPERATION

- 09 PRODUCT OPERATION
- 09 Using the FreshSpa Comfort+

Product Features

FSR-15 Ambient Temperature Features

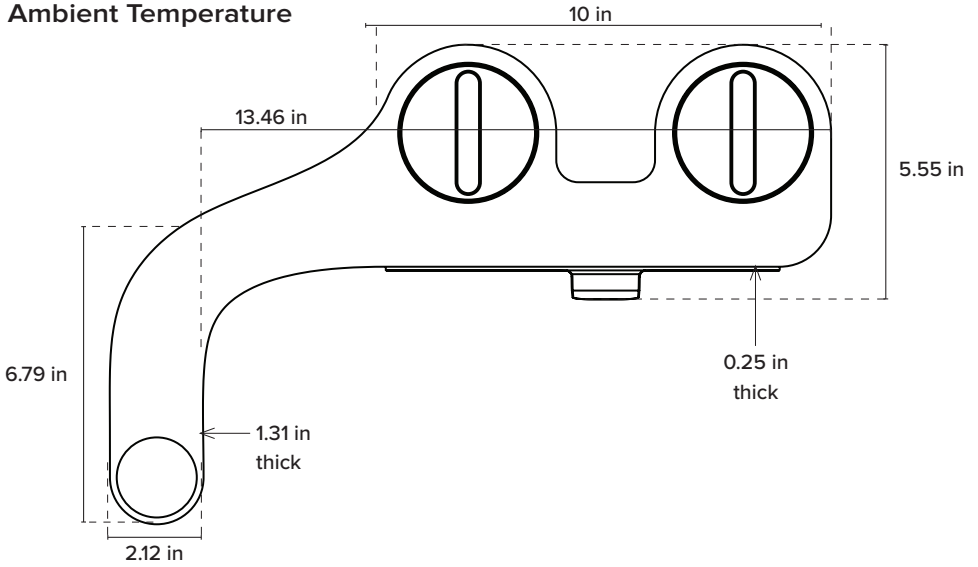
- Separate Front (feminine) and Rear wash nozzles
- High-quality ABS material with full-body panel
- Hygienic retractable nozzles
- Self-cleaning nozzles
- Adjustable water pressure
- Ceramic-core internal valve with patented uni-body construction
- High-quality metal $\frac{7}{8}$ " T-valve
- Durable braided metal cold water hose
- No electricity or batteries required
- Easy installation and adjustable toilet fit
- All accessories included for standard installation
- One-year warranty

FSR-25 Dual Temperature Features Only

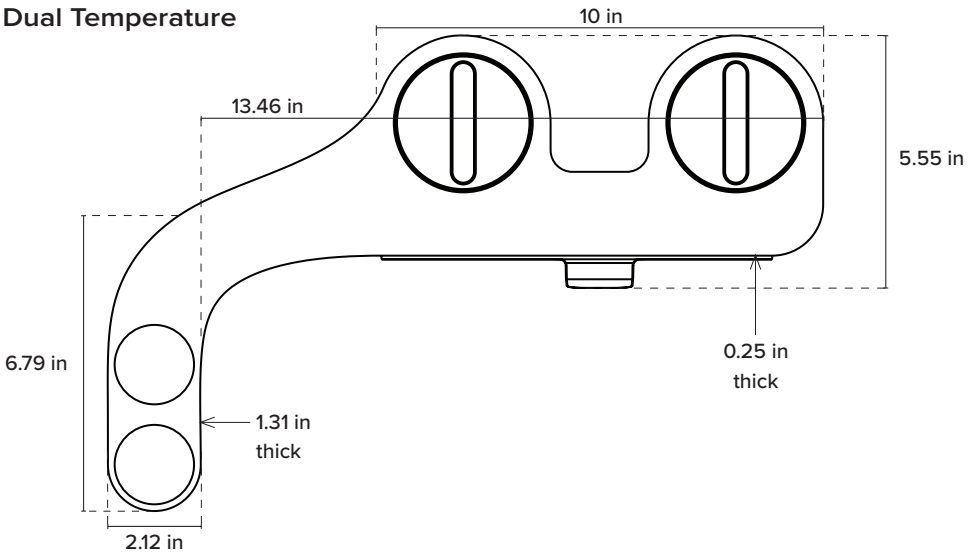
- Durable high-temperature hot water flex tubing
- Warm and cool water bidet washes
- Adjustable water temperature
- High-quality metal $\frac{3}{8}$ " T-valve

Product Dimensions

FreshSpa Comfort+ Ambient Temperature



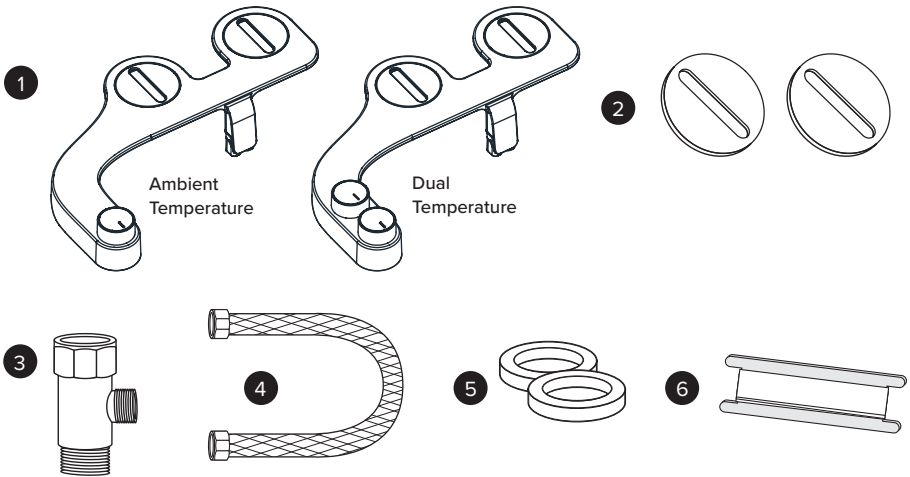
FreshSpa Comfort+ Dual Temperature



PRODUCT INFORMATION

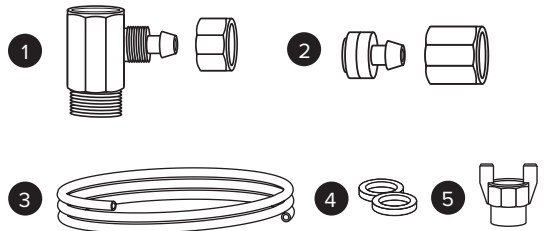
Product Parts

1. Bidet Attachment
2. Adjustable Mounting Brackets
3. Cold Water T-Valve Connector
($\frac{7}{8}$ " x $\frac{7}{8}$ " x $\frac{3}{8}$ ")
4. Cold Water Braided Metal Hose
5. Large Rubber Washers (2)
6. Teflon Tape



Dual Temperature Parts Only

1. Hot Water $\frac{3}{8}$ " T-Valve with $\frac{1}{4}$ " Pressure Connector and Pressure Cap
2. Hot Water Tubing Pressure Connector with Pressure Cap
3. $\frac{1}{4}$ " Hot Water Flex Tubing
4. Small Rubber Washers (2)
5. Hot Water Supply Cap



PRODUCT INSTALLATION

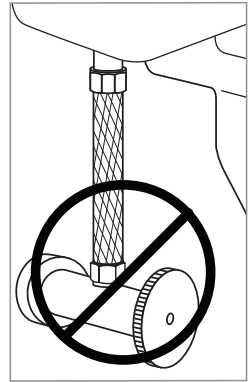
Before Installation

IMPORTANT:

Please be advised that the provided Cold Water T-Valve should be installed at the fill valve under the toilet tank, and NOT at the cold water supply coming from the wall.

NOTE:

The Hot Water T-Valve will be installed at the hot water supply under your bathroom sink.



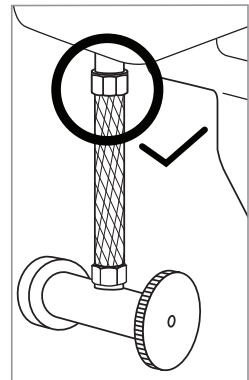
For FSR-25 Dual Temperature Model Only:

Check the size of the hot water supply connection (most likely under the sink/wash basin). This should be a $\frac{3}{8}$ " connection to properly fit and install enclosed T-valve.

NOTE:

If the connection is a $\frac{1}{2}$ " connection, you will need to purchase the following reducing adapter available online and at many plumbing hardware stores:

Reducing Adapter, $\frac{1}{2}$ " Female NPT x $\frac{3}{8}$ " Male Compression



Check Water Supply Line

Check the water supply line that connects the toilet tank fill valve to the water shutoff valve at the wall. If it is a rigid pipe, you will need to purchase a flexible water supply hose to replace it before installing the FreshSpa Comfort+. The length of the hose may vary and the top connection size should be $\frac{7}{8}$ " ballcock to connect to the T-valve that you will install under the toilet tank and the bottom connection will vary (most common are $\frac{3}{8}$ " and $\frac{1}{2}$ " female compression).

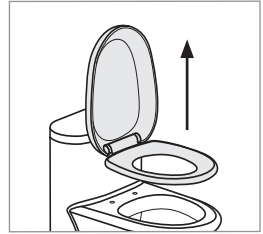
PRODUCT INSTALLATION

Installation

Please read these instructions carefully before installing your FreshSpa Comfort+. Failure to do so could result in flooding, leaking or damage to the product.

1. Existing toilet seat removal.

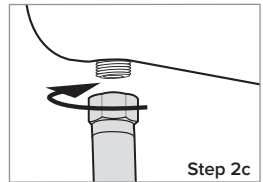
- Lift hinge covers and use flathead or Phillips head screwdriver to remove the mounting bolts. Alternatively, you may need to loosen mounting bolts underneath the seat.
- Remove the toilet seat and set the seat, mounting bolts and hardware aside.



Step 1b

2. Turn off water supply valve and flush toilet.

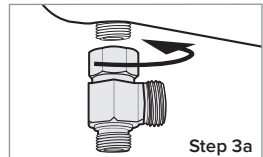
- Turn water supply valve off to stop the flow of water.
- Flush toilet and hold down handle to completely empty tank.
- Disconnect water supply hose from toilet tank.
Do not disconnect from the water supply valve.



Step 2c

3. Connect cold water T-valve to the toilet tank fill valve.

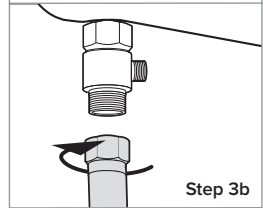
- Install the 7/8" cold water T-valve with one or both of the Large Rubber Washers to the incoming water connection on the bottom of your toilet tank.
- Connect the cold water supply line coming from the wall to the bottom of the T-valve.



Step 3a

4. Connect bidet hose to T-valve.

Connect one end of the Braided Metal Cold Water Bidet Hose to the remaining open side of the installed T-valve.

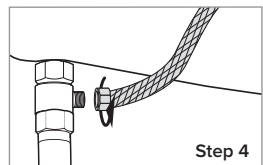


Step 3b

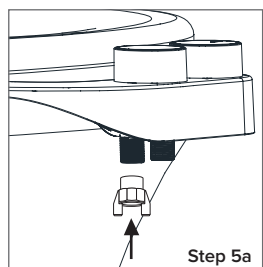
FOR AMBIENT TEMPERATURE MODEL, STOP HERE AND PROCEED TO "INSTALLING THE BIDET ATTACHMENT" ON PAGE 7. FOR DUAL TEMPERATURE MODEL, CONTINUE.

5. Install the Hot Water Supply Cap.

- If you are only connecting the cold water supply, then you must install the Hot Water Supply Cap (provided - see Page 3) over the hot water connection on your Swash (see diagram).
- After installing hot water cap, proceed to "Installing the Bidet Attachment" on Page 7. If you wish to also connect your hot water supply, then proceed to "Connecting the Hot Water Supply".



Step 4



Step 5a

IMPORTANT:

Failure to connect or cap the hot water supply will result in leaking during use.

Connecting the Hot Water Supply

1. Connect the hot water supply.
 - a. Locate the hot water supply line in your bathroom under your sink/washbasin and turn the water supply valve all the way off.
 - b. Drain the hot water line by turning the sink tap on the hot setting until no more water comes out.
 - c. Disconnect hot water supply hose to sink from shut off valve. You may have to use a $\frac{3}{8}$ " compatible wrench or a similar tool (not supplied).

NOTE:

There may be some residual water in the hose, use a small container or towel to catch any residual water.

2. Install the Hot Water $\frac{3}{8}$ " T-Valve and the Small Rubber Washers as needed onto the hot water shut off valve under the sink.
3. Reconnect hot water supply line to open end (top) of T-valve.
4. If it hasn't been removed already, unscrew the Pressure Cap covering the Pressure Connector on the T-valve.
 - a. Slide the pressure cap over the open end of the of Hot Water Flex Tubing with the inside threads facing towards the open end.
 - b. Push the hot water flex tubing over the pressure connector.

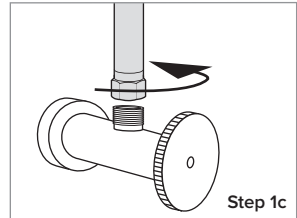
IMPORTANT:

Be sure to slide the hot water flex tubing over the pressure connector until the tubing slides past the "lip" of the pressure connector and it cannot go any further.

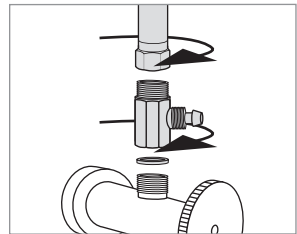
- c. Slide the pressure cap down until the cap meets the pressure connector. Screw the cap onto the T-valve until secure and tight.

CAUTION:

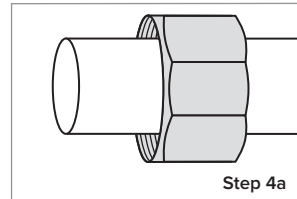
Do not over-tighten the pressure cap. You will risk damaging the tubing.



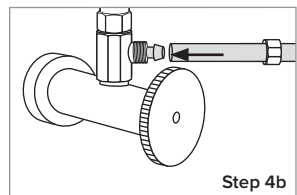
Step 1c



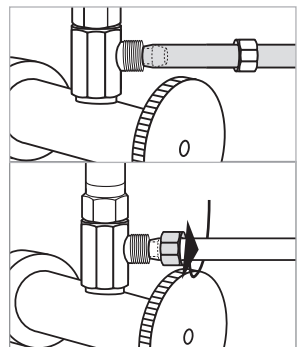
Steps 2-3



Step 4a



Step 4b

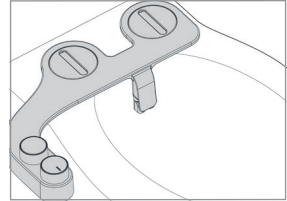


Step 4c

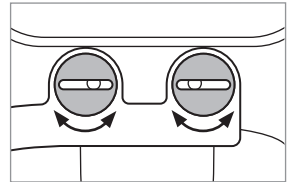
PRODUCT INSTALLATION

Installing the Bidet Attachment

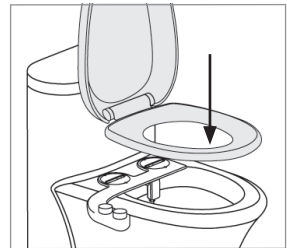
1. Install Adjustable Mounting Brackets into the Bidet Attachment. Place circular mounting brackets into the circular openings of the bidet attachment.
2. Install bidet attachment on toilet.
 - a. Place bidet attachment on the toilet so the nozzle is as close to the back of the toilet bowl as it will go. This will vary by toilet.
 - b. Make sure the adjustable brackets line up with the holes in the toilet fixture. You may need to rotate the adjustable brackets accordingly to line them up properly.
 - c. Replace the toilet seat on top of bidet attachment and secure using original toilet seat hardware. Make sure to tighten so that the bidet attachment and seat do not move.
3. Connect bidet hose to bidet attachment. Connect the open end of bidet hose to the cold connection under the bidet attachment.



Step 1



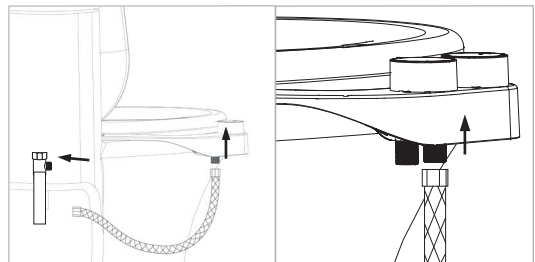
Step 2b



Step 2c

NOTE:

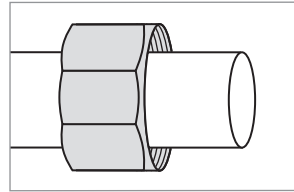
If you have already installed the hot water supply cap over the hot water supply on your FRS-25 Dual Temperature model, skip to step 5 on page 8. Otherwise, continue with the installation at the top of page 8.



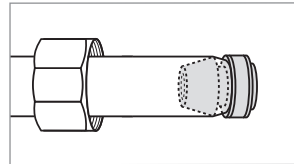
Step 3

Installation

4. Connect hot water tube to bidet attachment (for dual temperature only).
 - a. Take the hot water tubing pressure connector and remove the pressure cap.
 - b. Slide the pressure cap over the open end of the hot water flex tubing with the inside threads facing towards the open end.
 - c. Push the pressure connector into the open end of the hot water flex tubing with the washer facing out.



Step 4b

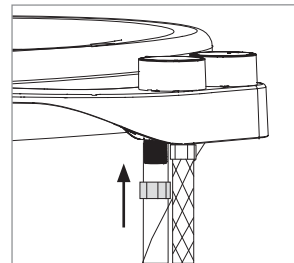


Step 4c

IMPORTANT:

Be sure to slide the hot water flex tubing over the pressure connector until the tubing slides past the “lip” of the pressure connector and it cannot go any further.

- d. Hold the pressure connector up against the hot water inlet on the bidet attachment. Slide the pressure cap along the tubing and screw the cap onto the hot water inlet until the pressure connector is secure.



Step 4d

5. Turn on water supply & check for leaks.
 - a. Open the main water supply valve slowly and check for leaks.
 - b. Wait 5-10 minutes, check again, and if there are no leaks, continue.

NOTE:

If there is any leaking, check all rubber washers and make sure all water connections are tight and secure. If necessary, you can use plumbers tape for any leaking connections.

TIP:

If spray direction is off-center after installation, unscrew the bolts, reposition the attachment slightly forward, and secure back in place. Depending on your preferences or body composition, the perfect position may require some readjustment.

PRODUCT OPERATION

Using the FreshSpa Comfort+

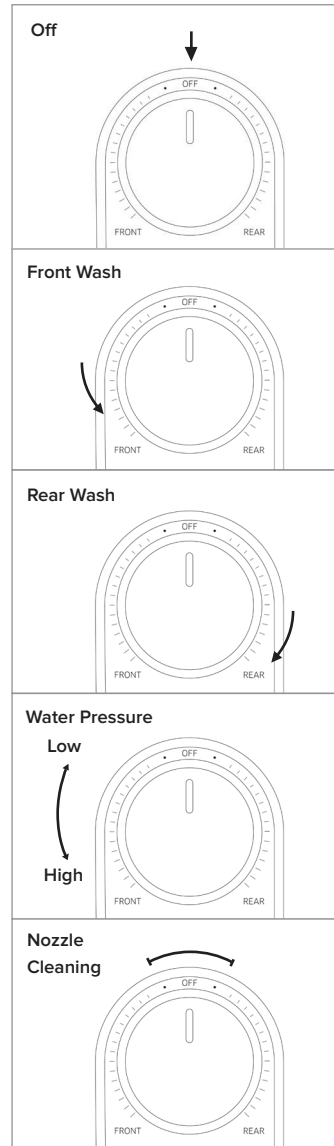
To engage the front wash setting, turn the dial counterclockwise towards the “FRONT” wash zone.

- The further the dial is turned, the higher the water pressure will be.
- To lower the water pressure, turn the nozzle back towards the center.

To engage the rear wash setting, turn the dial clockwise toward the “REAR” wash zone.

- The further the dial is turned, the higher the water pressure will be.
- To lower the water pressure, turn the nozzle back towards the center.

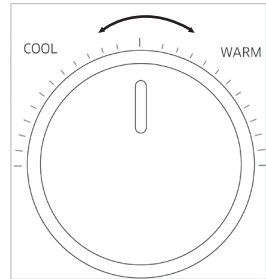
To clean the bidet nozzle, turn the control dial towards the “Nozzle Cleaning” position and water will wash over the nozzles.



Using the FreshSpa Comfort+

FreshSpa Comfort+ Dual Temperature Only:

To adjust water temperature (when both hot and cold water are connected), turn temperature dial slowly towards “WARM” until the desired temperature is reached.



NOTES:

There may be a delay in the warm water reaching the bidet attachment as the cold water in your pipes clears and is replaced with hot water (similar to the delay when you turn your faucet on).

If only connected to cold water, make sure that the temperature dial on the bidet attachment is turned as far as it can go towards the “COOL” setting for best pressure adjustability.

TIP:

For a quick and easy way to get warm water to the bidet, run the “Nozzle Cleaning” function with the warm water turned on for a short time until the water heats up, then use as normal.

WARNING:

Risk of scalding. High water temperature can cause severe burns. Be sure to set the water temperature for your hot water heater at or below 120°F (49°C) and use extreme caution when mixing hot and cold water during use. Brondell is not liable for any misuse of product or failure to use caution when connecting to hot water.

Maintenance

To clean the nozzles, gently pull down on the head of the nozzle, and use a toothbrush or soft cloth and mild detergent (such as dish soap).

More intensive nozzle cleaning can be performed by removing the spray heads:

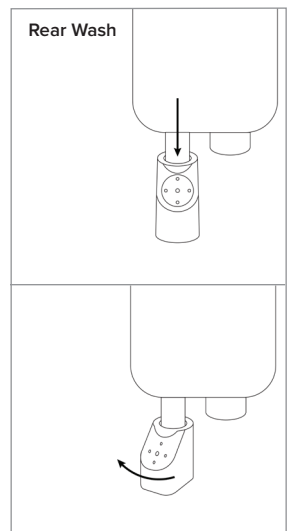
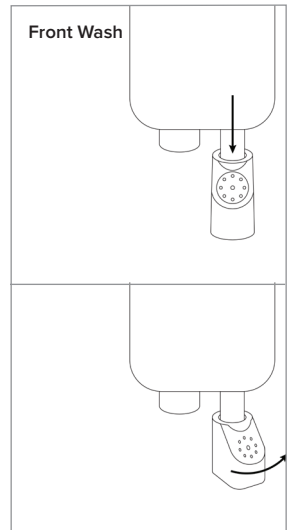
For right nozzle (Front Wash), gently extend, hold, and twist right to remove the nozzle cap. To reinsert nozzle cap, hold with the spray holes facing right and gently push up until it's secured. Twist the cap left to lock in place with the nozzles facing forward.

For left nozzle (Rear Wash), gently extend, hold, and twist left to remove the nozzle cap. To reinsert nozzle cap, hold with spray holes facing left and gently push up until it's secured. Twist the cap right to lock in place with the nozzles facing forward.

To clean the FreshSpa Comfort+, use a mild cleaner such as Simple Green or Windex spray. Do not scrub or use harsh, abrasive products to clean the FreshSpa Comfort+, as they may scratch the product.

Short Term Non-Use

If the product will not be used for more than a few weeks, you may consider shutting the water supply off at the wall for extra precaution.



Product Specifications

FRESHSPA COMFORT+ BIDET ATTACHMENT

Models	FSR-15 Ambient Temp, FSR-25 Dual Temp
Supply Water Pressure	20 psi – 100 psi
Product Dimension	10.5 in x 15.5 in x 3 in
Product Weight	FSR-15: 0.6 lbs FSR-25: 0.8 lbs

NOTE: The specifications listed above are subject to change without prior notice for reasons of improving the product performance.

Warranty

BRONDELL products are backed by some of the most comprehensive warranties in the industry. BRONDELL warrants that all products (excluding consumable items) shall be free from defects in material and workmanship under normal use and service.

FSR-15 & FSR-25 RESIDENTIAL ONE-YEAR LIMITED WARRANTY

100% Coverage of all parts and labor for the entire product for the first year from original date of purchase.

FSR-15 & FSR-25 COMMERCIAL WARRANTY

Warranty period 1 year from original purchase date for all BRONDELL products. Warranties may not apply to products that are used for heavy commercial, hospital, or other high use non-residential applications.

EXCLUSIONS AND LIMITATIONS

1. BRONDELL warrants its products to be free from manufacturing defects under normal use and service. This warranty is extended only to the ORIGINAL PURCHASER.
2. BRONDELL'S obligations under this warranty are limited to repairs or replacement, at BRONDELL'S option, of products or parts found to be defective, provided that such products were properly installed and used in accordance with instructions. BRONDELL reserves the right to make such inspections as may be necessary in order to determine the cause of the defect.
3. BRONDELL is not responsible for the cost of removal, return (shipping) and/or re-installation of products.

This warranty does NOT apply to:

- Damage or loss which occurs during shipment.
 - Damage or loss sustained through any natural or man-made causes beyond the control of BRONDELL, including but not limited to fire, earthquake, floods, etc.
 - Damage or loss resulting from sediments or foreign matter contained in a water system.
 - Damage or loss resulting from negligent or improper installation including installation of a unit in a harsh or hazardous environment.
 - Damage or loss resulting from removal, improper repair, modification of the product, or improper maintenance including damage caused by chlorine or chlorine related products.
4. This warranty gives you specific legal rights. You may have other rights which vary from state to state.

THIS WRITTEN WARRANTY IS THE ONLY WARRANTY MADE BY BRONDELL. REPAIR OR REPLACEMENT AS PROVIDED UNDER THIS WARRANTY SHALL BE THE EXCLUSIVE REMEDY AVAILABLE TO THE PURCHASER. BRONDELL SHALL NOT BE RESPONSIBLE FOR LOSS OF USE OF THE PRODUCT OR FOR OTHER INCIDENTAL, SPECIAL, FOR CONSEQUENTIAL DAMAGES OR EXPENSES INCURRED BY THE PURCHASER OR FOR LABOR OR OTHER COSTS DUE TO INSTALLATION OR REMOVAL OR COSTS OF REPAIRS BY OTHERS, OR FOR ANY OTHER EXPENSE NOT SPECIFICALLY STATED ABOVE. EXCEPT TO THE EXTENT PROHIBITED BY APPLICABLE LAW, ANY IMPLIED WARRANTIES, INCLUDING THAT OF MERCHANTABILITY, ARE EXPRESSLY LIMITED TO THE DURATION OF THIS WARRANTY. SOME STATES DO NOT ALLOW LIMITATIONS, SO THE ABOVE LIMITATION AND EXCLUSION MAY NOT APPLY TO YOU.

HOW TO OBTAIN SERVICE

To obtain repair service under this warranty, you must contact an authorized BRONDELL Service Center to obtain an RMA (Return Merchandise Authorization) number. Proof of purchase in the form of a copy of the original receipt must accompany the returned unit for the warranty to be valid. Take or ship the unit pre-paid to the closest BRONDELL authorized service center along with the RMA number and proof of purchase. To obtain the RMA number and locate the BRONDELL Service Center location nearest you,

brondell®
a healthy home experience