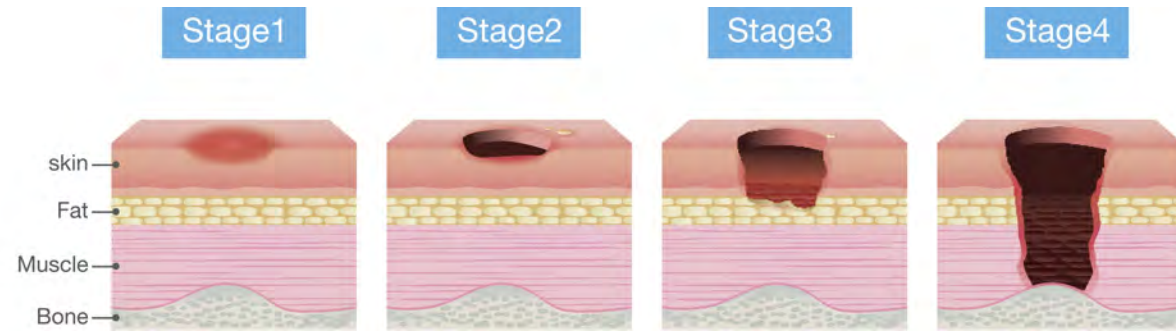


## FOAM

**Prius Foam Mattresses** are a low to high risk system for patients who are at risk of developing stage 1,2 and single site stage 3 pressure ulcers, according to your sound clinical judgment. Prius Foam Mattresses can also be used for patients who have an existing stage 1, 2, 3 and 4 pressure ulcer, in conjunction with your hospitals policy on pressure area management.



SPECIFICATIONS	VLX	RLX	DLX	ALX
Sizes	36" x 80" x 6.5" 42" x 80" x 6.5" 48" x 80" x 6.5" Custom sizes available	36" x 80" x 6" 42" x 80" x 6" Custom sizes available	36" x 80" x 6" Custom sizes available	36" x 80" x 6" Custom sizes available
Raised Side Rails	Available	Available	Available	Available
Weight Capacity	500 lbs	350 lbs	350 lbs	350 lbs
Warranty				
Foam Core	7 Year Non-Prorated Limited	6 Year Non-Prorated Limited	5 Year Non-Prorated Limited	3 Year Non-Prorated Limited
Cover	1 Year Material and Workmanship	1 Year Material and Workmanship	1 Year Material and Workmanship	1 Year Material and Workmanship
HCPCS Code	E0184	E0184	E0184	E0184

**Prius Therapeutic Foam Mattresses** are made of high density, high resiliently foam. Mattresses are delivered compress packed for lower cost shipping and easy warehouse storage.

**Prius Therapeutic Foam Mattresses** are tested and meet the Federal Standard for the Flammability of Mattresses 16 CFR part 1632 and 16 CFR part 1633



# FOAM MATTRESSES

Provides you, the caregiver, with peace of mind, and your patient with world class care and comfort



## VLX

- Tri-layered foam replacement mattress
- Full cold cool visco elastic foam top layer
- Zoned middle layer comfort foam and heel soft foam foot section
- Firm foam support base layer
- Full length firm side rails
- Urethane 4-way stretch top cover
- Vinyl base cover
- Optional raised side rails with ingress/egress cut outs
- Available sizes - 36 x 76, 80, 84 x 6 inches
- Bariatric size available - 42, 48 inch width
- All mattresses available in custom sizes



## DLX

- Dual layer foam replacement mattress
- Zoned comfort foam top layer
- Heel soft foam foot section
- Firm foam support base layer
- Nylon top cover
- Vinyl base cover
- Optional raised side rails with ingress/egress cut outs
- Available sizes - 36 x 76, 80, 84 x 6 inches
- All mattresses available in custom sizes



## RLX

- Dual layer foam replacement mattress
- Zoned comfort foam top layer
- Visco elastic foam foot section
- Firm foam support base layer
- Full length firm side rails
- Urethane 4-way stretch top cover
- Vinyl base cover
- Optional raised side rails with ingress/egress cut outs
- Available sizes - 36 x 76, 80, 84 x 6 inches
- Bariatric size available - 42 inch width
- All mattresses available in custom sizes



## ALX

- Dual layer foam mattress replacement
- Nylon top cover
- Vinyl base cover
- Size - 36 x 80x 6

