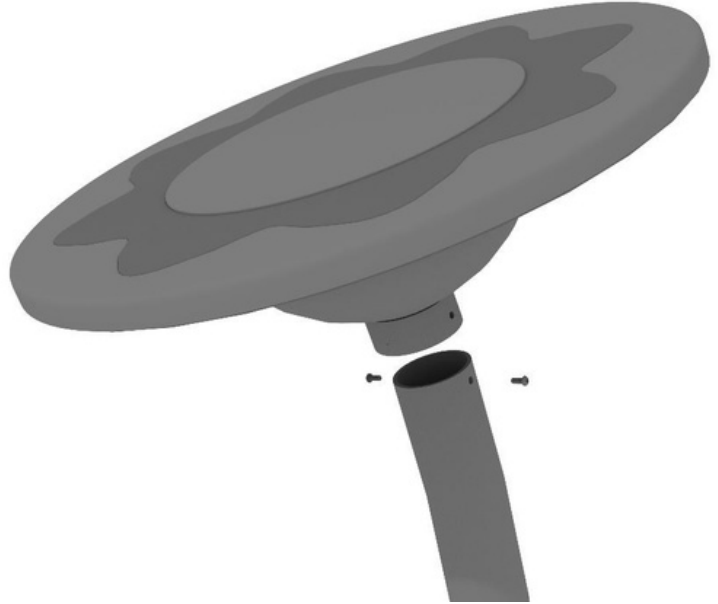


Flower Drum Install

STEP: 1

Connect flower drum top to post using two (2)
M6x12 screws



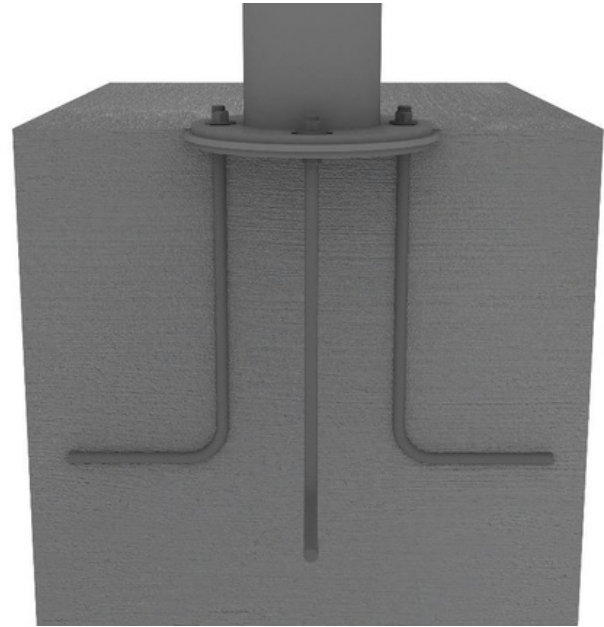
STEP: 2

Dig footer (18" x 18" x 18") and fill
with concrete. Allow concrete to
begin to set before sinking J-Bolts into
the mixture.

Flower Drum Install

STEP: 3

Using J-Bolts, slide bolts through each of the holes in base plate of the flower drum. (The J portion of the bolt will be buried in the concrete.) Loosely attach bolts to plate with lock nuts and washers. The extra nuts will be placed just a few threads on the top of each J-Bolt to help hammer the entire assembly firmly into the concrete mix. (This helps make sure the bolt does not strip due to the hammering.)



STEP: 4

Once the bolts are set, let concrete cure for at least 48 hours.
(Follow concrete manufacturer's recommendations with a minimum of 2500 PSI) It may be necessary to retighten the nuts at this time.

Flower Drum Install

STEP: 5

Cover The bottom plate of the flower drum using the included plastic cover and remaining included hardware.

