

FLOOR STANDING BARIATRIC TRAPEZE



DESIGNED TO ASSIST PATIENT'S WHILE CHANGING POSITION IN BED AND AS AN AID FOR TRANSFERRING IN AND OUT OF BED



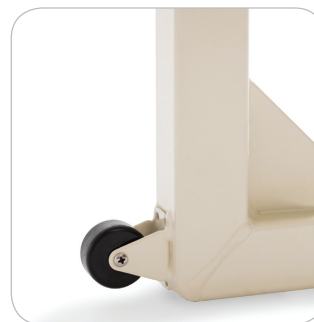
Rubber Coated Grab Bar allows for a Secure Grip



Adjustable Chain Height Locks Securely in Place



Adjust Chain Position from Edge of Headboard to end of Boom



Raised Rear Casters for Easy Transport



Rubber Coated Safeguards keeps Base Secure

LIGHT WEIGHT AND EASY TO ASSEMBLE

- **BOOM LENGTH:** 37"
- **INSIDE WIDTH BETWEEN LEGS:** 37.5"
- **OUTSIDE WIDTH BETWEEN LEGS:** 41.5"
- **BASE LEGS LENGTH:** 49"
- **TOTAL HEIGHT:** 74"
- **WEIGHT CAPACITY:** 500 Lbs.

MODEL # **TR500**