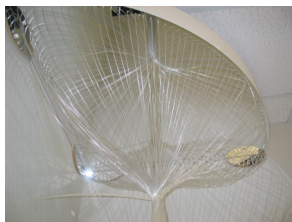


12. Slide the zip ties holding the fiber optics off (or carefully cut them off).
13. Turn on the electricity, and watch the Calming Fiber Optic Corner Shower slowly scroll through a rainbow of colors.



Please note: Only use the transformer supplied. Use of a different transformer may result in damage to the product and void the warranty.

Cleaning and Maintenance

- The unit should be cleaned with a damp soft cloth. A facility-approved non abrasive cleaning agent may be used for disinfecting.
- The unit has been designed for use by people with special needs, however this does NOT mean it is unbreakable. You must ensure the unit is not hit with anything and that no one pulls on the fibre optic side-glow strands.

Fiber Optic Safety

- A risk assessment must be completed for each person who is to have access to the Fiber Optics before use.
- Do not allow the Fibre Optics to be put in a user's mouth.
- Ensure the person using the Fibre Optics is under constant supervision.
- Do not allow the Fibre Optics to be put around a person's neck.

Troubleshooting

Q. The unit doesn't work.

A1. Is it connected to the 110v AC outlet using the correct transformer? If so,

A2. Is the power supply still plugged into the back of the light source? If so,

A3. Is the fibre optic side-glow harness still inserted into the front of the light source? If so,

A4. Please contact us for further assistance.

Contact Details

For USA please email support@experia-usa.com

For UK and rest of the world email support@experia-innovations.co.uk

Telephone: (800) 882-4045

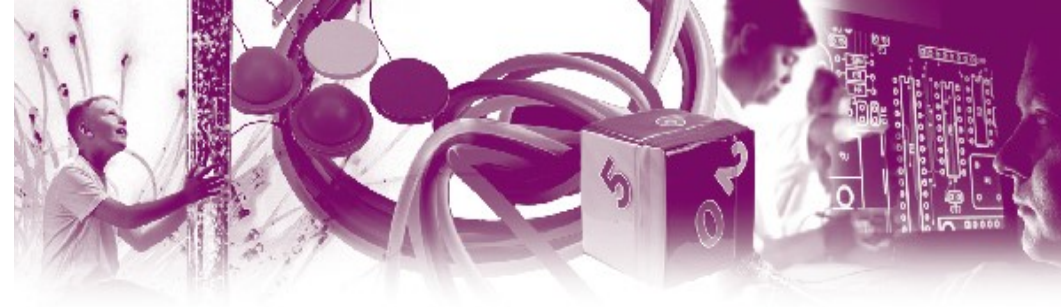
© 2016 All rights reserved.

Experia is a registered trademark.



experia **USA**
multisensory for everyone

Proudly made in the USA by



Fiber Optic Corner Shower - Calming



Congratulations on the purchase of your Fiber Optic Corner Shower!

Please follow all warnings on the product and within this manual. If upon receipt of this product the user suspects that the product is defective, and/or requires service or repair due to malfunction or damage to the product, please contact the manufacturer immediately. Please be aware that improper installation and/or use or misuse of this product may result in injury, death, or adverse reactions to its user. This product is intended to be installed and/or use by a trained professional. Failure to comply with these precautions or with specific warnings elsewhere in this manual violates safety standards of design, manufacture, and intended uses of the product.

Please ensure you read and follow these Instructions carefully before operating the unit. Please keep this manual for future reference.



WARNING: CHOKING HAZARD
Small Parts: Not suitable for children under 3 years.



3+ years

Features

- Innovative, space-saving design
- Completely silent
- Latest LED technology. No changing bulbs EVER!
- Cool running
- Hundreds of shades of colors
- Low voltage transformer supplied
- Easy Installation
- Durable & easy to use and maintain
- 1 Year manufacturers guarantee (collect and return)

Pack contents

- 1 x Fiber Optic Corner Shower
- 1 x Calming LED lightsource
- 1 x Low voltage transformer
- 1 x 2.5m fibre optic sideglow harness (installed)
- 1 x 70 1/2" x 4 7/8" PVC Strip
- 4 x Heavy duty drywall anchors
- 3 x Truss Head Screws (for attaching white PVC Strip)
- 7 x Snap-Caps (to hide screw heads)

Installation Guide

Note: You will need at least one helper, preferably two, to install this product.

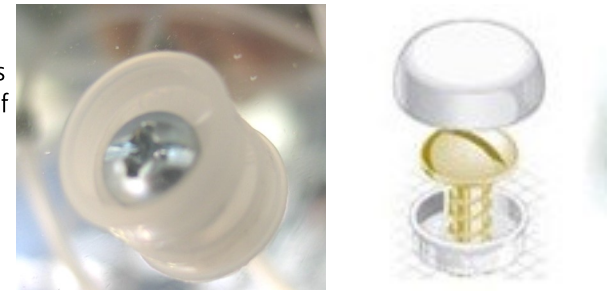
1. Carefully unpack the Corner Shower making sure you have everything listed in the pack contents.
2. Once you've determined which corner you will be mounting the corner shower in, measure up from the floor 85" and make a mark on the two adjacent walls 24" from the corner.
3. At the 85" mark, use a level to lightly draw a line that goes from 10" from the corner to 35" (roughly.....no perfection needed here).
4. With your helpers, hold the corner shower up to your lines against the walls. Using a pencil, pen, or other narrow marking tool, mark the four mounting hole locations through the mirrored "tabs" on the underside of the Corner Shower. Accuracy with this step is important.
5. Install the four 100 lb. capacity anchors using #2 Phillips screwdriver. Press the anchor tip slightly into drywall and, while applying pressure, turn anchor until flush with drywall. **Make sure the arrows on head of anchor point up and down.** Do not overtighten. Repeat on each mark.



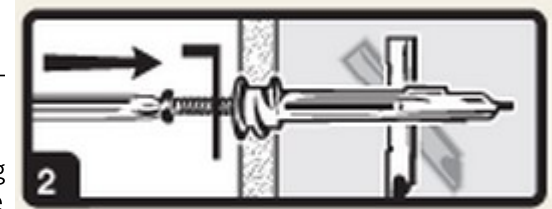
Mirrored Tabs



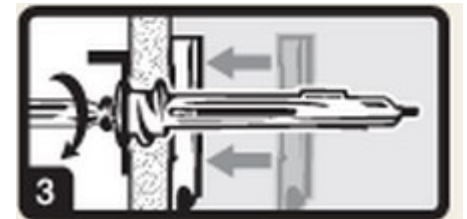
6. Put the four anchor screws through the bottom half of the Snap-Caps in advance of the next step.



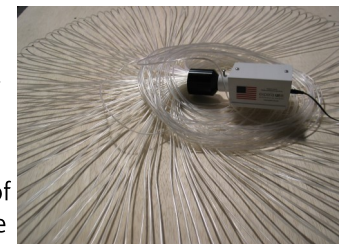
7. With your helpers, hold the Corner Shower in place over the anchors, and push screw (with snap cap) through the mounting holes and into anchor to engage toggle bar (image, right).



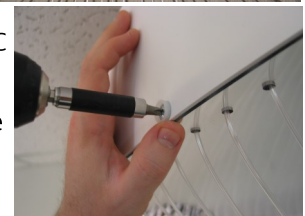
8. Tighten screw flush and continue turning. The screw will stop turning when toggle bar is tightly secured against the wall.



9. On top is the fiber optic termination (image, right). This will plug into the fiber optic lightsource (image, below right). Once plugged in, tighten the set screw to hold it in place. Plug the low voltage transformer into the back of the lightsource, then, plug it into your electrical supply. **NOTE:** There is no on/off switch on the calming lightsource. We recommend that you add an accessible switch to the electrical circuit that has been put in place for this product. If that is not practical, there are commercially available wireless outlet controllers that are relatively inexpensive.



10. Hold the long white PVC strip up against the edge of the Corner Shower, with mounting holes toward the floor. Using the three truss head screws, put then through the snap cap bottoms, and then fasten the PVC strip to the edge in 3 places.



11. Snap the Snap-Cap covers onto their bases to cover the exposed screw heads.