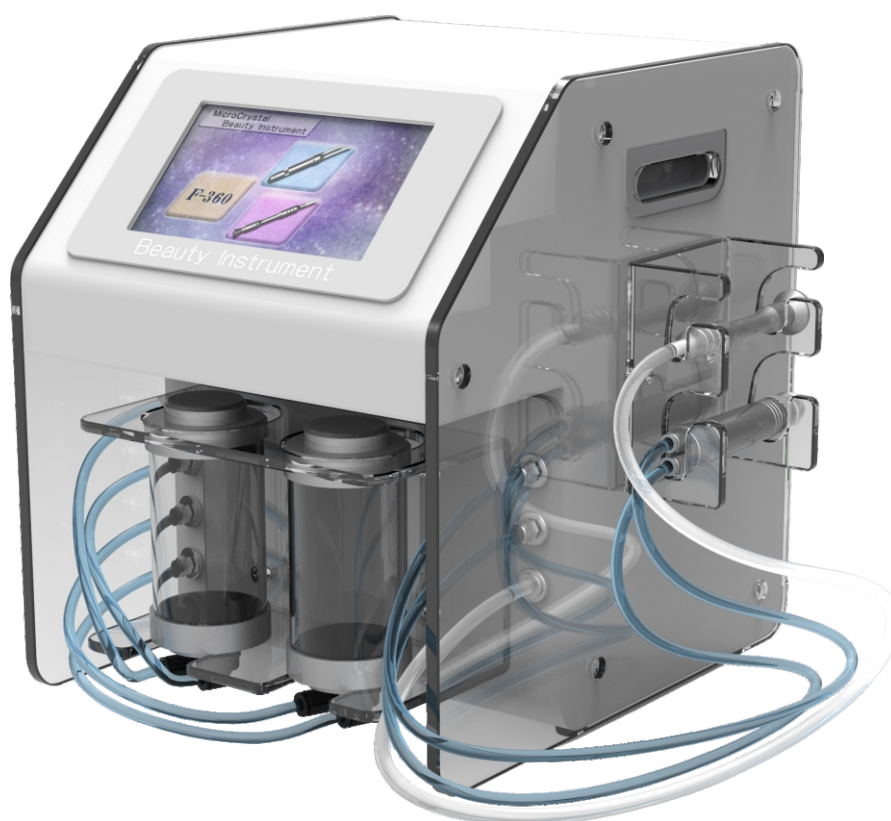


F-360 Microcrystal beauty instrument



Please read the instruction carefully before using the product

1.Warning

1. Cut off the power supply when replacing electrical components or maintaining and cleaning the machine.
2. Never leave machine unattended when power on .
3. It can only be used in accordance with the inherent use described in the instruction manual, and no accessories applied without recommendation by the manufacturer.
4. When the power cord or plug is damaged, when the machine is abnormal or overturned, damaged, or falls into the water, do not continue to use the machine, should be returned to the service center for inspection and maintenance
5. Keep the power away from high temperature, and do not wrap the power cord around the machine body. Do not work under direct sunlight for a long time, or it may cause a variety of unstable conditions of the machine.
6. It is forbidden to put the machine in the environment with high humidity, such as the bathroom.
7. In case of any abnormality, please contact the dealer and call professional maintenance personnel for inspection. Unauthorized disassembly of the main engine and any accessories thereof is prohibited.
8. Extended power cord should not be used.
9. This product is only available for professionals with qualifications.

2.Product description

Microcrystal beauty instrument is a combination of microcrystalline regeneration and diamond microsculpture two major technology in one beauty instrument, multi-functional use.Simple operation, can effectively improve a variety of skin problems, won the praise of the majority of consumers.

1. The microcrystal is mainly attracted by ultra-fine microcrystalline power through vacuum in one pipe and sprayed on the skin surface at high speed to remove the dead skin precisely and accurately, and then sucked away by another pipe, so as to promote rapid regeneration of new skin tissue, stimulate blood circulation and accelerate metabolism.

2.Diamond Dermabrasion is a technique that thoroughly removes the aging cells in the outermost layer of the epidermis and promotes the renewal of skin cells by using the micro-carving tube inlaid with particles, combined with friction and vacuum suction technology.

3.Functional features

- 1.Remove the aging cuticle, remove pore dirt and fade acne scars
- 2.Strength skin elasticity, reduce fine wrinkles, improve skin quality and make skin look younger.
- 3.Improve dullness, uneven complexion, pigmentation and other skin problems.
- 4.Fade tattoo pigment, fat lines, striae gravidarum.

4. Product technical parameters

Items	Parameter
Input power	100V-240V 50Hz/60Hz
Maximum input power	145W
package size	41.5×35.5×50cm
N.W.:	11.6Kg±5%
G.W.:	13.7Kg±5%
Ambient temperature	0°C~+45°C
Storage/transportation temperature	-20°C~+60°C
Ambient humidity	30%RH~80%RH
Storage/transportation humidity	30%RH~80%RH

5. Packing list

Designation	Specification parameter	Quantity
Mainframe	AC 100-240V	1 piece
Diamond Dermabrasion suction pen and grinding head	Note 1	1 set
Microcrystal grinding rod		1 piece
The waste sand bottle		1 piece
Net sand bottle		1 piece
Microcrystalline sand	200# Crystal	1 pot
Open end spanner 7-10	A3 blue zinc plated (ROHS compliant)	1 piece
The transparent natural color trachea	PU white $\Phi 4 \times \Phi 6$, 1.5 meters length	1 PC
The transparent blue trachea	6*4 1.5 meters length	1 PC
Air & water pipes	6*4 length : 25cm	2 PCS
Air & water pipes	6*4 length : 22cm	2 PCS
Silica gel tube	Silicone natural color $\phi 7 \times \phi 4$ 1.5 meter length	2 PCS
The filter	PC transparent plastic shell	3 PCS
$\phi 14.5 \times 1.5$ Seal ring	Silicone natural color $\phi 17.5 \times \phi 14.5 \times 1.5$	5 PCS
$\phi 3.5 \times 1.5$ Seal ring	Silicone (Hardness:45 degree \pm 5 degree) Natural color $\phi 6.5 \times \phi 3.5 \times 1.5$	5 PCS
$\phi 6 \times 1.0$ Seal ring	Silicone natural color $\phi 8 \times \phi 6 \times 1.0$	5 PCS
F336 Microcrystal spray cap	Light tea color/ $\phi 21.1 \times 32.8$ (PC)	10 PCS
F336 Microcrystalline nozzle	Stainless steel 304 natural color $\phi 9 \times 27.7$	1 PCS
Pneumatic quick coupling	Black M5 , connect $\phi 6$ straight	1 PCS
Microcrystalline filter core	Sintering white $\phi 20 \times 25$ (PE)	5 PCS
Sealing ring of micro-crystal end cover	Silicone natural color $\phi 36 \times 1.5$	2 PCS
Sealing ring of micro - crystal tank	Silicone natural color $\phi 60 \times 3.5$	4 PCS
Large flat head machine silk	4 \times 12 (ROHS compliant),A3,Nickel plating	2 PCS
Power cord		1 PCS
F360 Attachment frame	PMMA transparent 120*100*60 T=6mm	1 PCS
The instructions		1 PCS

Note 1: one set of diamond miniature suction pen and grinding head includes: two suction pens, nine diamond grinding heads (straight tube) 14.5*14.2, (big horn) 21.8*15.2, (small horn) 18.9*15.2, (big horn) 21.8*15.2, (small horn) 14.5*18.2, (straight tube) 14.7*14.2, (small horn) 18.9*15.2, (small horn) 14.5*20.1, (straight tube) 14.5*14.2, Net for the filter $\phi 11 \times 0.15$ (300 mesh) , Sponge $\phi 12 \times 15$.

6. Installation instructions

1. As shown in photo 1, we will connect the attachments of the mainframe

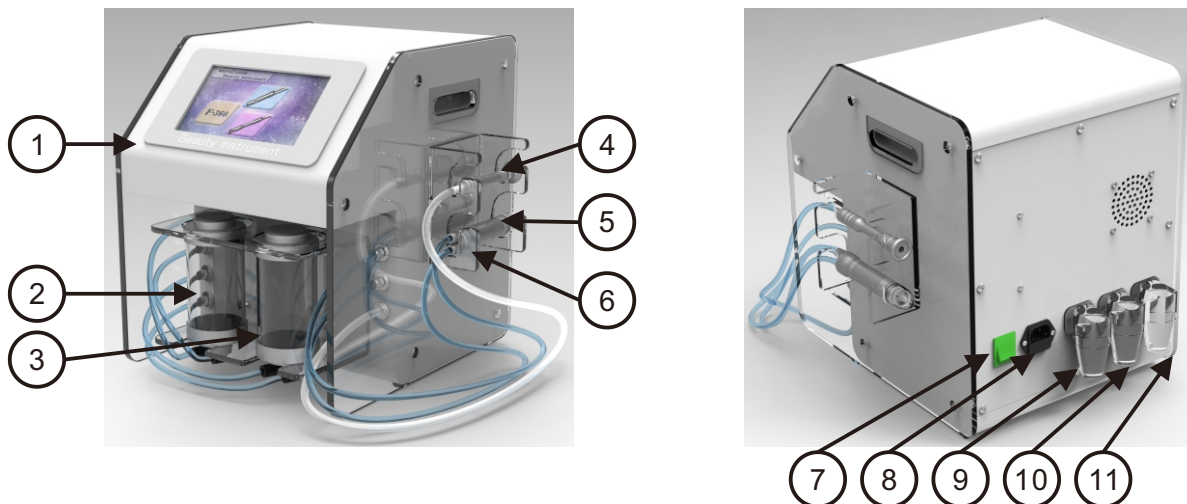
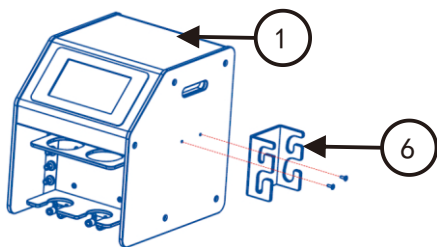


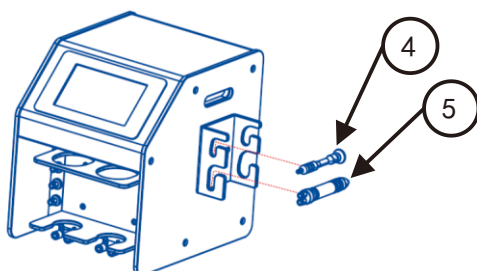
Photo 1

- (1) Mainframe
- (2) Microcrystal waste sand bottle
- (3) Microcrystalline pure sand bottle
- (4) Diamond Dermabrasion suction pen
- (5) Microcrystal Grinding rod
- (6) Attachment frame for Hand pieces
- (7) Power main switches
- (8) AC power supply socket (containing fuse)
- (9) Diamond Dermabrasion filter
- (10) Microcrystal filter
- (11) Microcrystalline condensated water filter

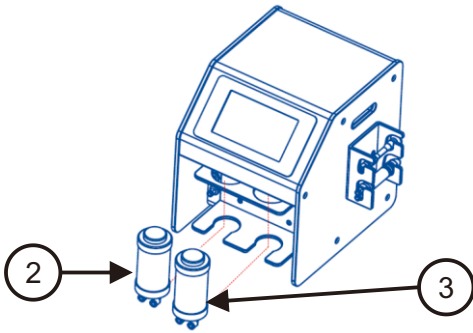
2. Detailed installation diagram as follows



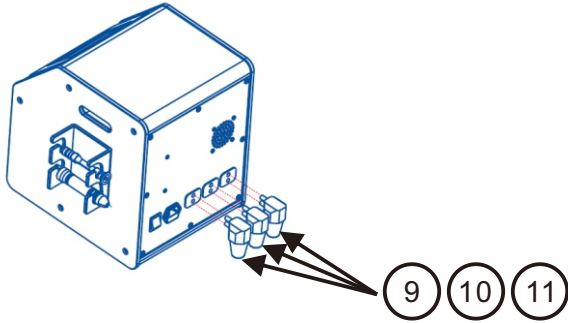
1. As shown in the left picture, install the attachment rack of the suction pen to the right side of the mainframe (with two M4*12 large flat head machine wires)



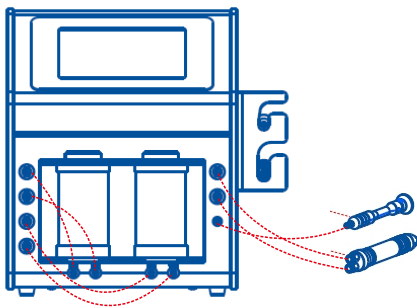
2. As left picture shown, the microcrystalline grinding rod and the diamond micro-engraving brush are respectively placed on the accessory rack.



3. As left picture shown, the microcrystalline waste sand bottle and the microcrystalline clean sand bottle are respectively placed on the attachment rack.



4. As photos show, Diamond Dermabrasion filter, Microcrystalline filter and condensate water filter are respectively installed on the back board of the main engine in order;



5. As photo shown : connect each windpipe according to the corresponding label number.

7. Introduction of instrument interface and key functions



①Microcrystal Dermabrasion

②Diamond Dermabrasion

Photo 2

1. Turn on the power switch and the whole machine power on. The buzzer sounds once, the LCD screen lights on and enters the standby state.
2. Standby screen, see photo 2 (the LCD screen is capacitive touch LCD screen, which can be directly touched by fingers; if there is protective film on the screen when you use it for the first time, please tear it off to avoid affecting the use.
 - (1) Press the button (1) once to enter the functional screen of Microcrystal Dermabrasion, see photos 3.
 - (2) Press the button (2) once to enter the function screen of Diamond Dermabrasion, see photo 4.
3. Microcrystal Dermabrasion function

Microcrystal Dermabrasion

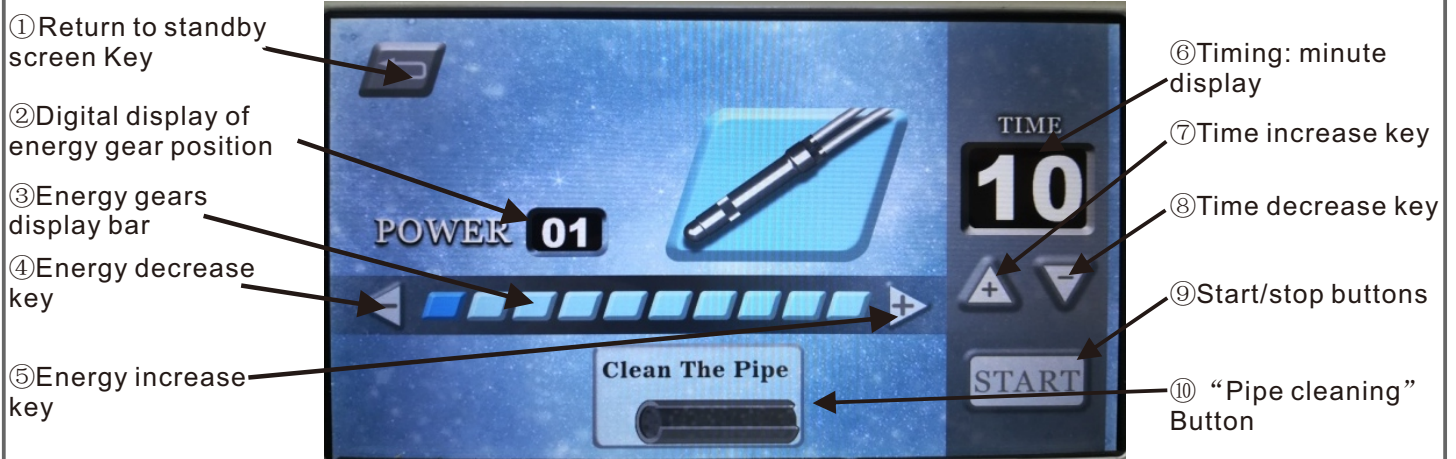


Photo 3

① Button : return to standby screen: click once to return to standby screen
 ② Digital display for energy gears : digital display of the current energy gears, gears from 1 to 10, total 10 gears.

③ Energy gear display bar: display the current energy gear in the form of graphics, a total of 10 gears.

④ Energy decline button: each click, energy come down a gear.

⑤ Energy increasing button: each click, energy go up a gear.

⑥ Timing : minutes display, the maximum time for 30 minutes, the minimum time for 1 minute.

⑦ Time increasing button: each click, increased by 1 minutes, maximum is 30.

⑧ Time diminishing button: each click, decreased by 1 minutes, minimum is 1.

⑨ Start /stop button:

Under stop state, click once to start the function of Microcrystal Dermabrasion;

Under working state, clicking once will exit Microcrystal Dermabrasion mode and automatically enter the mode of "pipeline cleaning ".After working in the "clean pipe" mode for 20 seconds, it will automatically stop and return to the stop state.Click the start/stop button again by "pipe clean" mode to exit and return to the stop state.

Note: From the working state to the stop state each time, the cooling fan of the host machine will keep working for 5 minutes more before stopping.

⑩ "Pipe cleaning " button:

Under the state of stop, click once to start " pipeline cleaning mode".

Under this mode, no more microcrystalline sand flows out from sand bottle, and the host machine continues to recycle the remain microcrystalline sand in the pipe and the microcrystalline grinding rod.

At this time, microcrystalline grinding rod can be used to clean the remaining sand on the skin, or use the silica gel plug to block the mouth of grinding rod to achieve the effect of remaining microcrystalline sand in the pipe and the grinding rod, recycle work will hold 20 seconds then automatically exit the mode, you also click once to start " pipeline cleaning mode" directly exit this mode.

4. Microcrystal Dermabrasion function

Diamond Dermabrasion

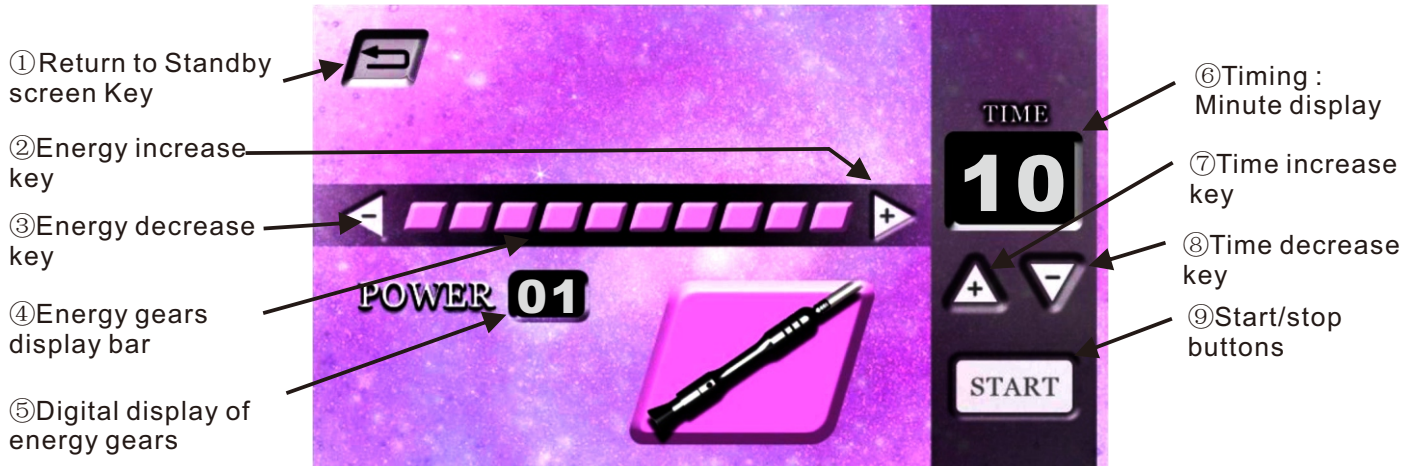


Photo 4

- ① Button :return to standby screen , click once to return to standby screen
- ② Energy increasing button: each click, energy go up a gear.
- ③ Energy decline button: each click, energy go down a gear.
- ④ energy Gears display bar: To show the current energy gear by the form of the graph , total 10 gears.
- ⑤ Digital display of energy gears: display the current energy gears in the form of Numbers, from 01 to 10, total 10 gears .
- ⑥ Timing : minutes display,the maximum time for 30 minutes, the minimum time for 1 minute.
- ⑦ Time increasing button: each click, increased by 1 minutes, maximum is 30.
- ⑧ Time diminishing button: each click, decreased by 1 minutes , minimum is 1.
- ⑨ Start/stop button:
 - Under stop state, click once to start the function of Diamond Dermabrasion;
 - Under working state, clicking once can exit Diamond Dermabrasion

8. Attentions

1. Attention of treatment:

Before treatment, please analyze the properties of the customer's skin, then choose the diamond grinding head, and adjust the appropriate air pressure.

After skin cleanness , only need to pat and dry the redundant moisture on the face then can start operation, no need to use Astringent Lotion or latex.

When treatment on the eyes, please take care that the air pressure should be adjusted to about 1~5, and gently pass through twice .

T shape position cutin is thicker, can change thick grinding head to do local treatment , air pressure also can increase appropriately.

After finishing the skin grinding, please use water to clean the face again, and then conduct nutrition introgression.

Under working state ,Click once to exit the Diamond Dermabrasion.

2. Attentions after treatment:

Frequently use ice compress or live cell collagen products for regeneration and stabilization.

Be sure to protect yourself from the sun.

Please use makeup 4 hours later after the treatment. It is recommended to use pure mineral powder to avoid crowding out.

Please try your best to wash your face with cold water.

Do not go to sauna or touch anything too hot for 10-15 days after the treatment.

Because of individual skin condition, vitality and depth of treatment place are different, please do the next treatment at intervals

Deep treatment after 2~3 days , it will appear the itching peeling phenomenon , please do make good hydration replenishment.

After skin grinding, please try to use mild maintenance products, not acid metabolites.

3. please u use microcrystalline sand is 180#~200# mesh. The recycled waste sand is not allowed to be use again.

4. Before using the instrument every day, please check whether the filter behind the host machine needs maintenance;

5. The water droplets generated by dehumidification are collected by the microcrystalline condensate water filter during work, when volume collected reaches about 1CM high, the water shall be poured out in time to prevent overflow risk .When not using the main engine for a long time or the main engine needs to be transported, the water in the microcrystalline condensate filter must be poured out to prevent leakage and damage of the instrument.

9. Daily maintenance

1. Disinfection method of diamond grinding head:

After using the diamond grinding head, please use distilled water or filtered water to clean the suction head and the inner part of the suction head with a small brush, and clean it by scouring. After washing it, put it in a container containing 75% alcohol and clear liquid for 15 minutes disinfection. After 15 minutes, take it out and put it in the ultraviolet disinfection cabinet and standby for the next customer.

2. Microcrystalline grinding rod cleaning

Remove the plastic cap, rinse the inner and outer surfaces with tap water and detergent, then use cotton swab to dip 75% alcohol disinfectant to disinfect the inner and outer surfaces.(Do not use high temperature or uv disinfectant)

Please use a soft bristle brush to clean sand on and around the microcrystalline nozzle surface.

3. Daily use and maintenance for filters

1) Remove the filter

A) Pull the whole filter out of the instrument slowly and horizontally, as photo show .

B) After the filter pulled out, slowly pull the cup cover from the filter vertically downward.

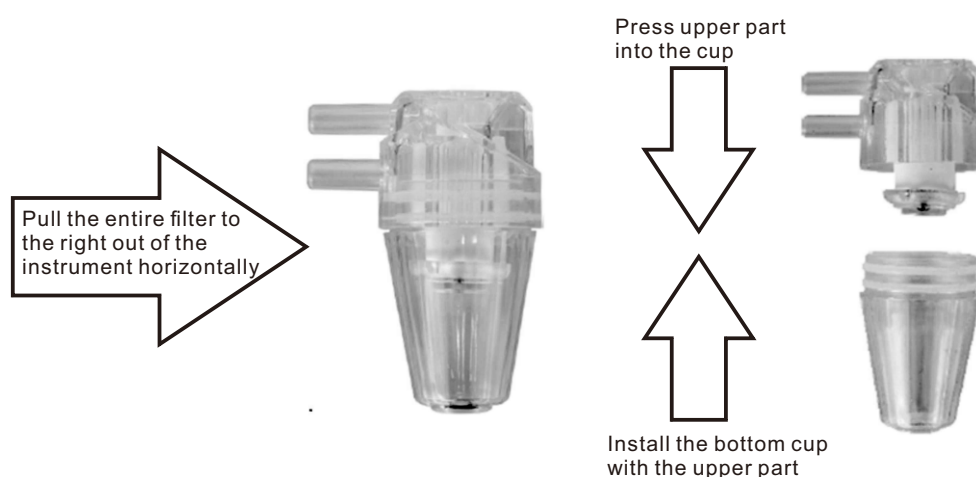


Photo 5

2) Clean the filter

A) Pour out the water or impurities inside the cup cover of filter; If cleaning is needed, the filter can be rinsed under the faucet. It is strictly prohibited to use corrosive liquid such as alcohol. Dry it after cleaning or wipe it with dry soft cloth or dry paper towel.

3) Install the filter

A) Filter installation: install the cup cover below the filter, and ensure the integrity of the sealing ring during installation, so as to avoid air leakage. Please refer to the picture below.

B) install the filter horizontally and back to the original position to ensure the tightness without leaving any gaps.

C) See Photo 1. Remember not to install the filter with liquid on the microcrystalline filter or Diamon filter



If the white seal ring is lost and any air leakage cannot be used.

Photo 6

4. Waste sand bottle cleaning

1) Prepare a soft and exquisite brush, See photo 7.



Photo 7

2) Remove the waste sand bottle from the machine, see photo 8



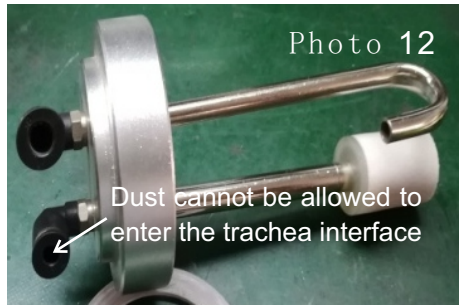
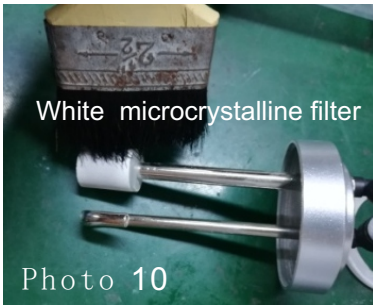
Photo 8

3) Open the bottle cap with tracheal interface and remove the sealed silicone ring in the lid, see photo 9

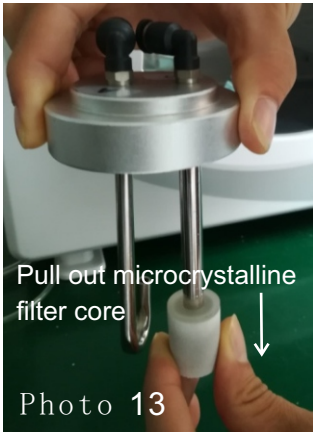


Photo 9

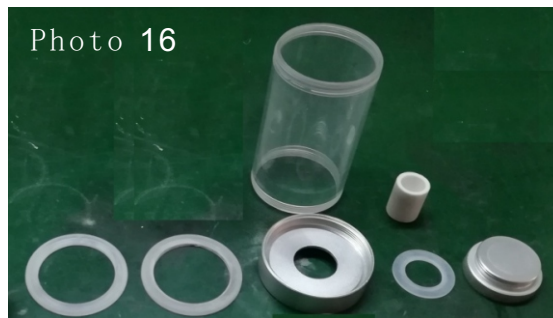
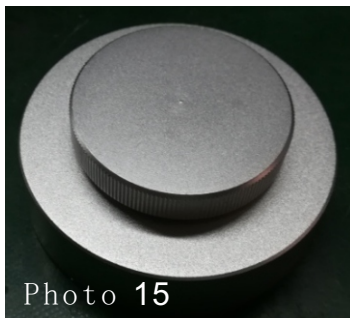
4) Clean the white microcrystalline filter core (Photo 10 & 11), outer surface of tube and inner surface of bottle cap with a dry soft brush. (note: dust cannot be allowed to enter the trachea interface shown in photo 12 during the cleaning . The trachea cannot be washed with water. If make it wet carelessly , must wait for the internal and external pipe dry before use



5) After brushing, sweep the bottle cap in the direction as photo 13, with the white microcrystalline filter core facing down, pull out the microcrystalline filter core by hand, and then sweep the microcrystalline filter base with a clean soft brush . Be careful not to let dust enter the hole of the microcrystalline filter base (Photo 14).



6) Dismantle the bottle cap (Photo 15) , scrub all the parts show Photo 16 with running water and soft brush, and dry the cleaned parts with dry cotton towel.



7) When installing the bottle, please note that size of the two large silicone sealing rings photo 10 show are the same. To distinguish the upper and lower surfaces, please refer to photo 17 and photo 18. The flat side is upward.

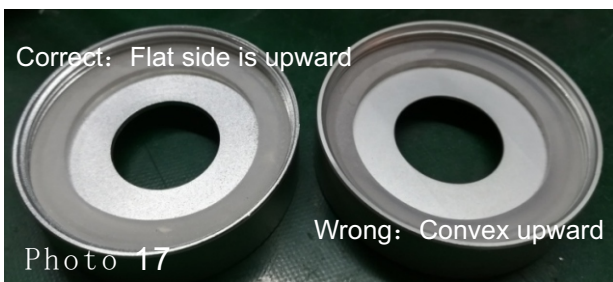


Photo 18

5. Cleaning of sand bottles : (method similar to waste sand bottles)

1) Prepare a soft and exquisite brush ,See photo 19.



Photo 19

2) Remove the clear sand bottle from the machine, See photo 20

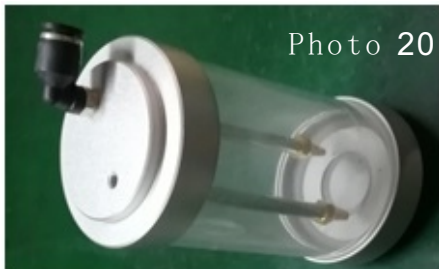


Photo 20

3) Open the bottle caps at both ends and remove the sealed silicone ring inside the lid, see photo 21.



Photo 21

4) Clean the outside surface of the copper sintered muffler, tube surface and inner surface of the bottle cap (see photo 22) with a dry soft brush. (Note: The trachea cannot be washed with water. If make it wet carelessly , must wait for the internal and external pipe dry before use.)



Photo 22

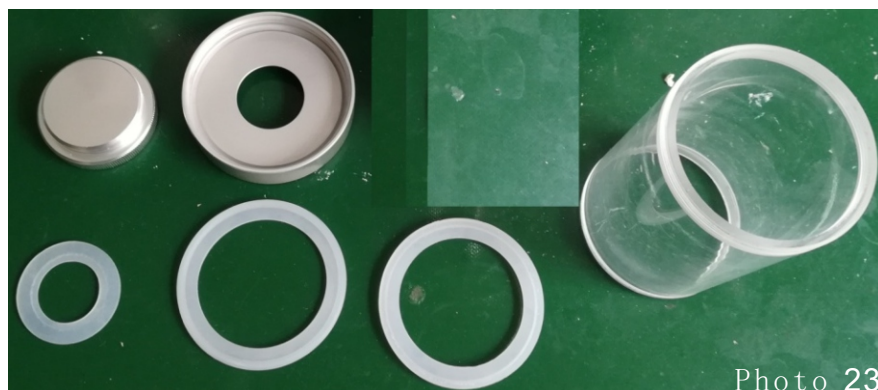
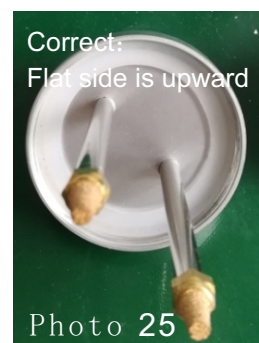


Photo 23

5) Brush all parts in photo 23 with running water and a soft brush. Dry the cleaned parts with a dry cotton towel and let them dry.

6) When installing the bottle, please note that the two large silicone sealing rings in photo 23 are the same size. To distinguish the upper and lower surfaces, please refer to photo 24 and 25. The flat side is upward.



10. Possible problems of the system and maintenance methods

Fault phenomenon	Troubleshooting methods
Power on but no display	<ol style="list-style-type: none"> 1) check whether the power cord is properly connected. 2) check whether the power switch is on and whether the switch indicator is on. 3) check whether the input voltage conforms to the rated specification of the product. 4) check whether the fuse is blown. If it is blown, please replace the fuse of the same model. The power of the instrument must be disconnected before replacement (The professionals are required to replace it).
No LCD display;Or the LCD screen has a display, but all the keys are invalid	<ol style="list-style-type: none"> 1) Please call professionals to open the case and check whether the LCD screen is well connected with the host socket. 2) Contact agents or manufacturers for further analysis and processing.
The cooling fan is noisy	<ol style="list-style-type: none"> 1) Check whether there are foreign bodies blocking fan blades. 2) Professionals are required to replace the cooling fan with the same model.
The effect of microcrystalline grinding is worse or no effect at all.	<ol style="list-style-type: none"> 1) check whether there is too little sand in the net sand bottle, or the sand is seriously stacked on one side, or the sand is wet and agglomerated, or the sand is mixed with solid aggregates. 2) Check whether the sand in the waste sand bottle is too full, which will affect the sand recycling. 3) Check whether the air pump is working and whether the gear adjustment is normal. 4) Check whether the connection of each trachea is correct by referring to the label paper of sand bottle and microcrystal pen and the color of trachea. 5) Check whether the filter is installed well, whether the sealing ring is installed normally, and whether there are too many foreign bodies in the filter. 6) Check whether lid of clean sand bottle and waste sand bottle (with sealing ring inside the lid), quick interface and air pipe connection are well fastened;If found loose, please re-tighten. 7) Check whether the quick interface of the microchip pen and the air pipe connection are well fastened;If found loose, please re-tighten.

	<p>8) Check whether the two sealing rings between the microcrystal plastic cap and the micro-crystal pen are good.</p> <p>9) Contact agents or manufacturers for further analysis and processing.</p>
<p>The grinding suction of diamond Dermabrasion becomes smaller or has no suction at all.</p>	<ol style="list-style-type: none"> 1) Check whether the air pump is working and whether the gear adjustment is normal. 2) Check whether the connection between the diamond Dermabrasion suction pen and the air pipe , the host machine is good and whether the air pipe is damaged. 3) Check whether all sections of the diamond Dermabrasion suction pen are tightened and whether there are too many foreign bodies in the filter net of the scution pen. 4) Check whether the filter is installed well, whether the sealing ring is installed normally, and whether there are too many foreign bodies in the filter. 5) Confirm if all the quick couplings are tight. If not, please tighten them by spanner 7-10. 6) Contact agents or manufacturers for further analysis and processing.