

MANUAL INSTRUCTION OF F-100 MINI FACIAL STEAMER

IMPORTANT SAFETY INSTRUCTIONS

When using electrical appliances, especially when children are present, basic safety precautions should always be followed, including the following:

READ ALL INSTRUCTIONS BEFORE USING

DANGER - To reduce the risk of electrocution:

1. Always unplug this appliance immediately after using.
2. Do not use while bathing.
3. Do not place or store appliance where it can fall or be pulled into a tub or sink.
4. Do not place in or drop into water or other liquid.
5. Do not reach for an appliance that has fallen into water. Unplug immediately.

WARNING - To reduce the risk of burns, electrocution, fire, or injury to persons:

1. An appliance should never be left unattended when plugged in.
2. Close supervision is necessary when this appliance is used by, on, or near children or individuals with certain disabilities.
3. Use this appliance only for its intended use as described in this manual. Do not use attachments not recommended by the manufacturer.
4. Never operate this appliance if it has a damaged cord or plug, if it is not working properly, or if it has been dropped, damaged, or dropped into water. Return the appliance to a service center for examination and repair.
5. Keep the cord away from heated surfaces. Do not wrap the cord around the appliance.
6. Never use while sleeping.
7. Never drop or insert any object into any opening.
8. Do not use outdoors, household use only.
9. Connect this appliance to a properly grounded outlet only. See grounding instructions.
10. Unplug this appliance before filling. Fill the reservoir with water only. Do not fill above the fill-mark.
11. Do not use an extension cord with this appliance.

12. Use facial steamer only on a level surface.
13. Do not use additives.
14. Never hold this facial steamer close to your face in one position as this may cause scalding.
15. Disconnect the supply cord before filling, rinsing, or cleaning, and allow to cool before handling, cleaning, or storing the appliance.
16. Do not touch hot surfaces.
17. Extreme caution must be used when moving an appliance containing hot liquids.

SAVE THESE INSTRUCTIONS

GROUNDING INSTRUCTIONS

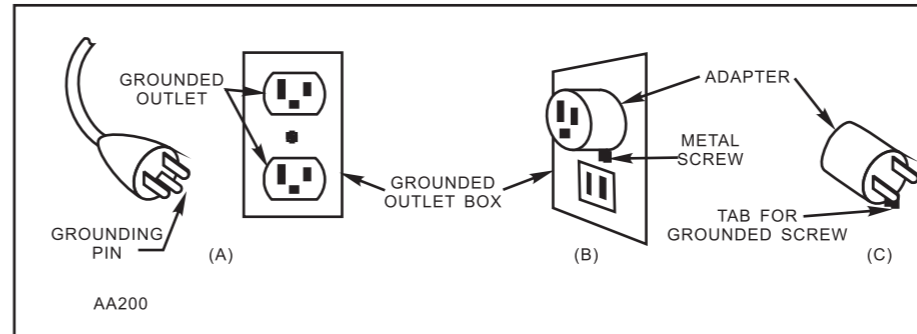
This appliance must be grounded. In the event of an electric short-circuit, grounding reduces the risk of electric shock by providing a path of low resistance for the electric current. This appliance is equipped with a cord having a grounding wire with a grounding plug. The plug must be plugged into an outlet that is properly installed and grounded in compliance with all local codes and ordinances.

DANGER - Improper use of the grounding plug can result in a risk of electric shock.

Check with a qualified electrician or service personnel if you are in doubt as to whether the appliance is properly grounded. Do not modify the plug provided with the appliance-if it will not fit the outlet, have a proper outlet installed by a qualified electrician.

If repair or replacement of the cord or plug is necessary, do not connect the grounding wire to either flat blade terminal. The wire with insulation having an outer surface that is green with or without yellow stripes is the grounding wire.

This appliance could for use on the 100-130 or 220-240 volt circuit and has a grounding plug that looks like the plug illustrated in sketch A in Figure as following. A temporary adapter, which looks like the adapter illustrated in sketches B and C, may be used to connect this plug to a 2-pole receptacle as shown in sketch B if a properly grounded outlet is not available. The temporary adapter should be used only until a properly grounded outlet (sketch A) can be installed by a qualified electrician. The green-colored rigid ear, lug, or the like extending from the adapter must be connected to a permanent ground such as a properly grounded outlet box cover. Whenever the adapter is used, it must be held in place by a metal screw.



Warning:

Any other servicing should be performed by an authorized service representative

HOUSEHOLD USE ONLY

FUNCTIONS:

1. Open up the skin pores for deep cleaning the dirt inside.
2. When the vapor penetrates through the skin pores, it may soften and clean the grease, black head, make-up remnants and dirt.
3. The ozonizer which sending out ozone will effectively kill the skin bacteria, keep the skin healthy, soften the necrotic cell of skin surface necrotic.
4. Help the skin pores release toxin.
5. Activate the blood circulation, stimulate the metabolism of cells, better improve the wrinkle.

INSTALLATION:

1. Base seat stands on the desk.
2. Check if the machine body is tightly twisted with water container .
3. Slightly twist the combination of nozzle pipe and insert them into the round circle on top of the body.
4. Move the nozzle to the using direction.

INSTRUCTION:

1. Supply some clean water until the water comes up to the upper limit from filler on the top of the machine body.
2. Plug the power switch.
3. Press the "steamer" or "power" key .The light turns on and the machine starts to heat. .In about 6 minutes, the vapor will spray out from the nozzle, and then the

ozonizer can be operated as needed.

4. Press the "ozone" key

The light turns on and the ozonizer operates when the power turns on.

There is obvious atomization and flavor together with the vapor distinctly.

5. During the operation, the water level will decline when the vapor sprays out constantly. In case the water level approaches the lower limit, firstly turn off the atomizing key and cut off the power supply. About 3-4 minutes later, supply some clean water (between upper limit and lower limit) from filler on the top of the machine body, and then plug the power switch to resume the operation.

MAINTENANCE:

1. Clean the scale out of the water container and heater in time. Cleaning method: using a soft metal brush or marinate in the vinegar for 5-7 minutes, then clean the heater or water container with clear water.
2. Keep alert on the water level during operation.

CAUTIONS:

Water level: when working, water level should be keep between the upper limit.

Current leakage: when supplying water, don't spill water in the power switch, so as to avoid current leakage.

Air leakage: when air leakage occurs in the operation, please cut off the power supply, clockwise twist the water container tightly with clean towel. If the condition is not improved, stop the machine and have a contact with sales agent.

Control distance: during operation, the spray nozzle cannot aim at the people's face until the vapor goes steady and smoothly. The nozzle head should keep a distance at about 30-35 cm from the face (details listed below according to the skin types). Vapor should spray firstly from the customer's lower jaw and then all over the face.

Control time: though the ozone may kill the bacteria but it's not well using for long time. The period of time used should be according to the skin types:

Skin types (remedy suits case)	Distance	Times
Greasy skin, poor blood circulation	30-35 cm	15 min
Neutral & mixture skin	30-35cm	10 min
Dry skin	30-35cm	5 min
Sensitive skin	35cm	5 min
Stained skin	30-35cm	10 min

PACKING LIST:

F-100A			
Description	Quantity	Description	Quantity
Main Body	1PCS	Water Jar	1PCS
Base	1PCS	Seal ring of the water jar	1PCS
Spraying head	1PCS	User manual	1PCS

F-100B			
Description	Quantity	Description	Quantity
Main body	1PCS	Water Jar	1PCS
Spraying head & arm	1PCS	Filler lid	1PCS
17. 5×2 Seal ring	2PCS	Extension arm	1PCS
23×3 Seal ring	2PCS	Seal ring of the water jar	1PCS
User manual	1PCS		

F-100C			
Description	Quantity	Description	Quantity
Main Body	1PCS	Water Jar	1PCS
Spraying head & arm	1PCS	Filler lid	1PCS
17. 5×2 Seal ring	2PCS	Extension arm	1PCS
23×3 Seal ring	2PCS	Seal ring of the water jar	1PCS
User manual	1PCS	Wool felt	5PCS

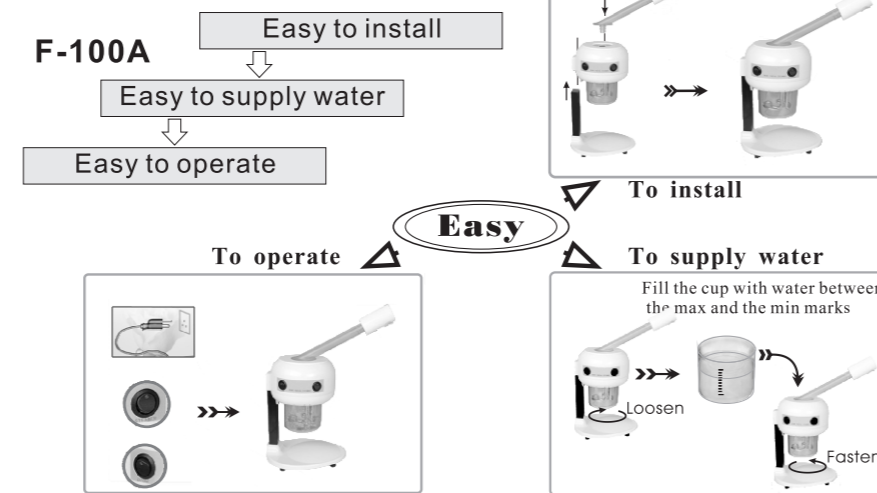
ADD WATER IN TIME:

During continuous operation, when the water level is approaching the lower limit, the power supply at the temperature controller will automatically cut off. Supply water this time, otherwise temperature controller will keep working from time to time until the heater burnt out. The machine will resume to work in 1-3 minutes after supplying water.

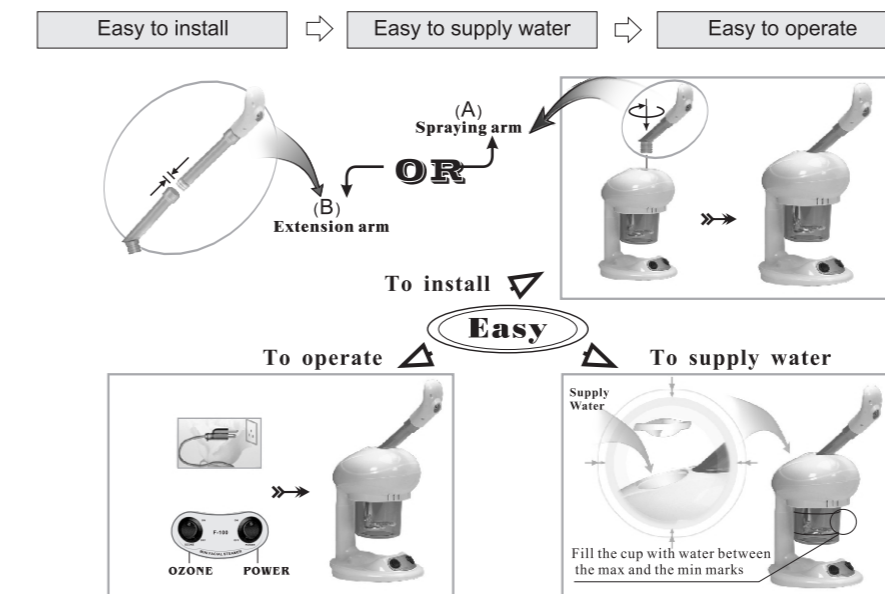
WARNINGS:

1. Forbid to put the greasy stuff into the water container, otherwise, water may spray out.
2. Some essential oils in high purity may be very corrosive and may damage the integrity of the plastic nozzle. The use of corrosive essential oils is not recommended and cannot be covered under the One Year Limited Warranty.
3. Forbid to spray vapor directly down to the client's face, or it will cause scald.
4. Forbid to use the steamer in the humid environment, like bathroom, etc.
5. Forbid to use the steamer in the sun for long time, otherwise, it will cause some un-stabilities.
6. Forbid to open up the cabinet by oneself. If there is anything unusual, please consult the sales agent, and send for skilled technicians.
7. Add water container only with distilled water or purified water, It is prohibition to put into the water container essential oil, Chinese herbal medicine or other viscous material into the water container, otherwise easily cause water dripped on spray head or damaged instrument.
8. Climatic environment for working: In normal environment: means the equipment should be used with heating and ventilated environment. The working temperature is from +0°C~40°C, relative humidity is from 30%~83%.

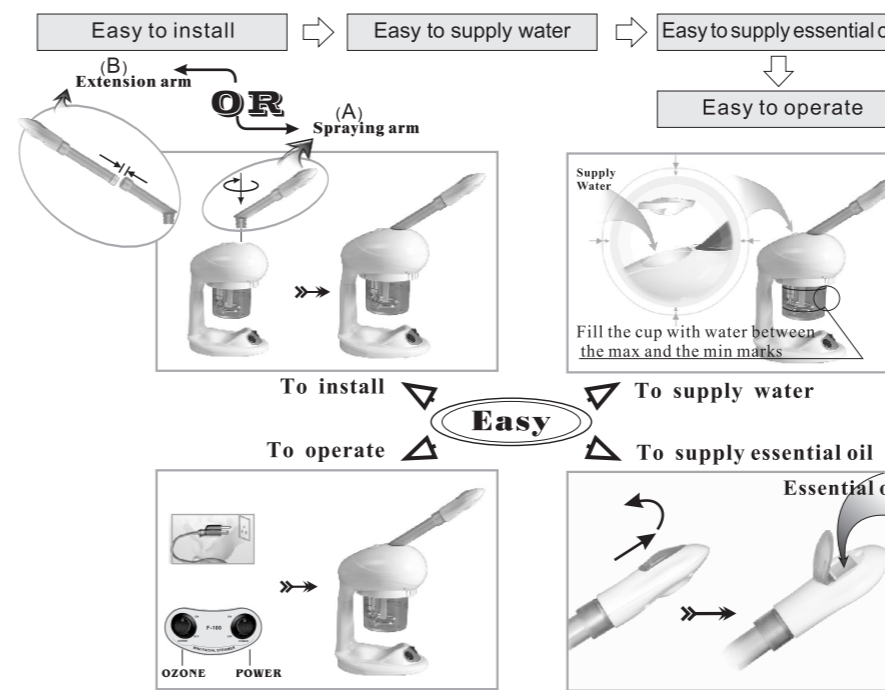
TIPWIZARD:



F-100B



F-100C



F-100 *Mini* FACIAL STEAMER



USER INSTRUCTIONS

Voltage : A.C 100-120V ~
A.C 120V ~
A.C 220-240V ~

Frequency : 50Hz/60Hz



ISO 9001:2000