

Molift EvoSling



Molift has been manufacturing high quality hoists and slings for generations. Quality, comfort and safety are key considerations during product development. We offer a wide range of sling models and sizes ensuring we have a solution, whatever the users requirements.

What are the user's requirements?

For people who need help with mobility, it's important that the sling is both comfortable and safe. It must facilitate transfers and meet the user's requirements.

Comfort, function and safety

Our slings have been developed in conjunction with carers and users, in order to meet their requirements in terms of functionality, comfort and safety. The slings must be comfortable and secure, while at the same time being easy to work with for both the user and carer.

Our standard models are designed for use in the usual types of transfers and are suitable for most users. They are available in three different back heights: HighBack, MediumBack and LowBack. We know that users may have a wide variety of requirements, so we've designed additional models with specific features to meet their needs, including the EvoSling Hygiene and EvoSling Ampu.

The design of our slings ensures that they distribute weight and pressure evenly for maximum safety and comfort.

Individual testing

We recommend individual testing, and offer a wide range of different models and sizes. To assist therapists with this we have a Sling Assessment Guide.



Colour coding

Colour coding of hoisting loops helps you find the right fit.

Padding

Padding in back and leg support distributes the weight over a larger area, making the sling more comfortable for the user.

Belt

EvoSling Hygiene has a belt for extra safety as well as anti-slip protection on the inside.

Guide straps

Guide straps assist with positioning during the lifting process.

EvoSling MediumBack Padded.

Flexibility

Multiple hoisting loops on both head and leg supports allow the distance to the suspension and the user's sitting angle to be adjusted.

Three different back heights

HighBack, MediumBack and LowBack to suit different needs.

Labelling

Clear, practical information on a highly visible label. Washing instructions and technical information are found in a protective pocket at the back.

Application pocket

Pockets in the back and on the leg supports make application easier.

Informative, clear labelling

The large label contains all the information you will need for day-to-day use. Washing instructions, serial number and other technical information can be found behind the label in a pocket which protects against wear and tear during washing.

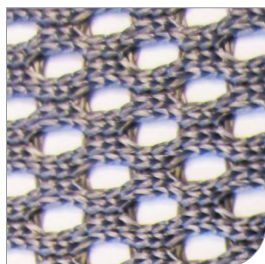
Periodic inspection

The sling has a label on which you can record when a periodic inspection has taken place. It can be found in the label pocket. By recording the date on which the sling is first used on the label, you can plan when the first inspection should take place.

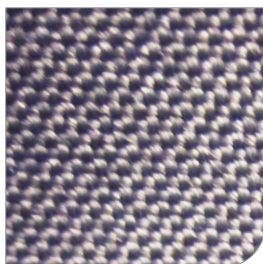
Materials

The polyester slings are hardwearing and durable. The material is flexible and easy to maintain and has a dirt-repellent surface.

The polyester net slings are equally hardwearing, durable and flexible. The material also offers good ventilation.



Polyester net



Polyester

Periodic inspection performed

| MONTH | YEAR | | | | | | | | | | | | |
|-------|------|------|------|------|------|------|------|------|--|--|--|--|--|
| | 2014 | 2015 | 2016 | 2017 | 2018 | 2019 | 2020 | 2021 | | | | | |
| 1 | | | | | | | | | | | | | |
| 2 | | | | | | | | | | | | | |
| 3 | | | | | | | | | | | | | |
| 4 | | | | | | | | | | | | | |
| 5 | | | | | | | | | | | | | |
| 6 | | | | | | | | | | | | | |
| 7 | | | | | | | | | | | | | |
| 8 | | | | | | | | | | | | | |
| 9 | | | | | | | | | | | | | |
| 10 | | | | | | | | | | | | | |
| 11 | | | | | | | | | | | | | |
| 12 | | | | | | | | | | | | | |

User name / Namn
.....
.....
.....

Detailed information about EvoSling

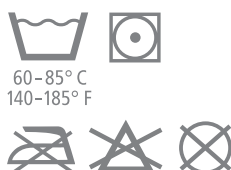
Recommended user weight

| | |
|-----|------------|
| XS | 17–25 kg |
| S | 25–50 kg |
| M | 45–95 kg |
| L | 90–160 kg |
| XL | 160–240 kg |
| XXL | 230–300 kg |

Materials

Polyester
PE-cellfoam (padded models)

Washing instructions



Washing at higher temperatures wears out the material faster.

Colour coding

