

# PMI

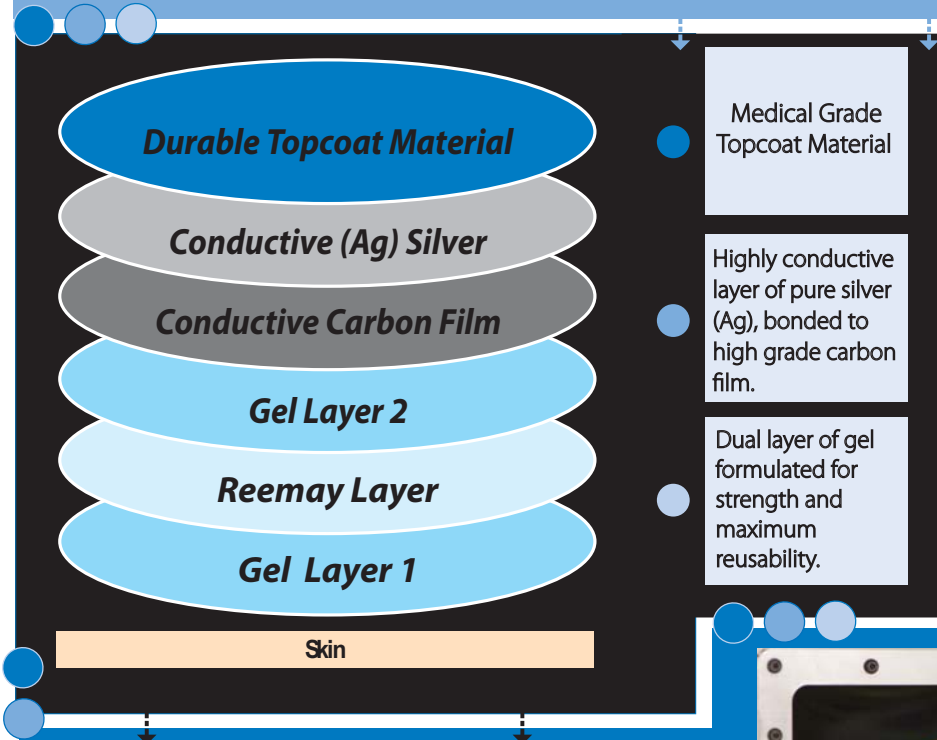


# ELITE

## Construction and Dispersion

### Dual Layer Of Hydrogel In Every Premium PMI Electrode!

Uniquely designed dual layer of adhesive hydrogel enhances the performance, offering ultimate patient comfort. Our premium hydrogel increases the life of each electrode resulting in maximum reusability.

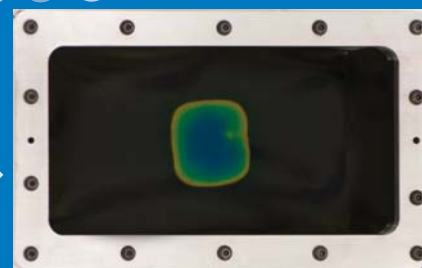


## The Number One Choice Of Medical Professionals!



A leading brand electrode and a PMI electrode are placed on a "Current Dispersion Meter". An electrical current is passed through each electrode for a period of 60 seconds. The electrical voltage output is identical for each electrode.

*\*Results are shown at right.*



PMI's Electrode



Competitor's Electrode

The unique manufacturing processes and materials used in PMI electrodes provide a uniform current dispersion throughout the desired treatment site of each electrode. This uniform current dispersion provides the maximum treatment to the entire electrode surface.

### The difference is clear

## PEPIN MANUFACTURING, INC.



1875 HWY 61 South, Lake City, MN 55041

800-291-6505 • 651-345-5655 • Fax: 651-345-5656

www.pepinmfg.com • Email: electrodes@pepinmfg.com

www.facebook.com/advanTrode

Scan with your smartphone to visit our website



Follow us on Facebook and Twitter