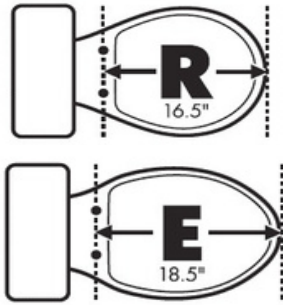
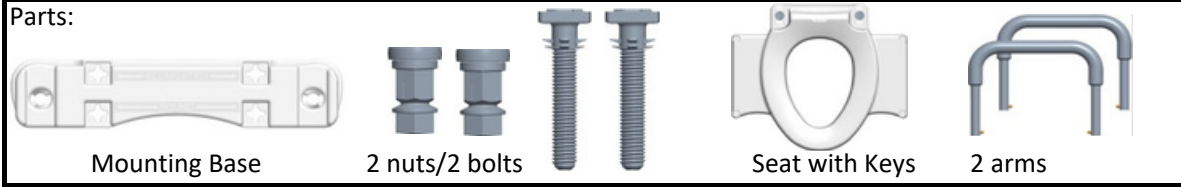


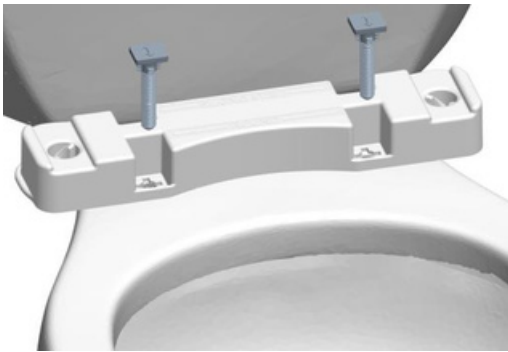
## 4.5" Raised Toilet Seat: Installation Instructions

Parts:

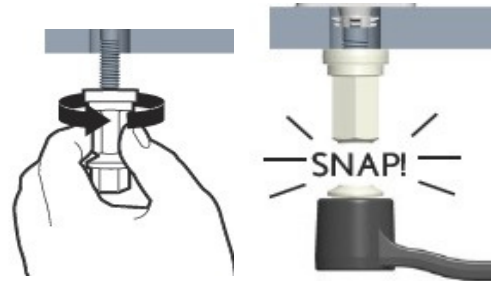


1) Confirm the size of your toilet

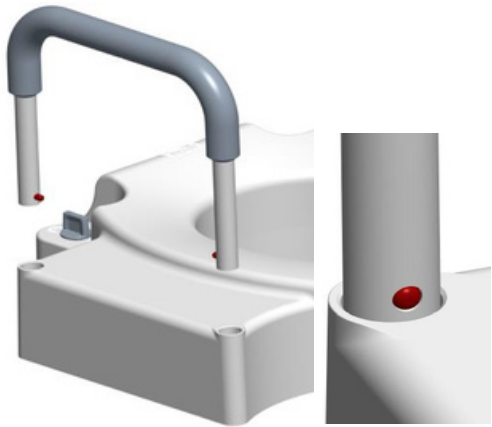
2) Match your toilet size to the mounting base



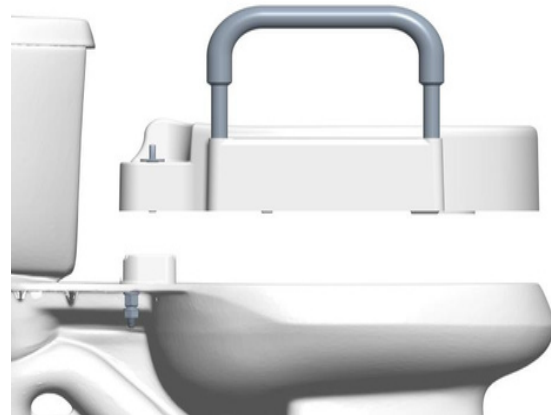
3) Curved edge facing the bowl, align the correct mounting holes and slide the bolts thru the base and into the ceramic



4) Finger tighten the Snap 2 Secure nuts. Use a 5/8" wrench, tighten until the Installation Heads snap off



5) Slide the arms in, depress button to lock



6) Align the back of the seat with the Mounting Base and slide the seat on



7) Turn both Keys to the locked position