


Lounge & Group Seating Chair

Versatile chair intended for lounging. The Sync Slim Chair can stand alone or be combined with any ‘In Sync’ Modular Series chair to create flexible arrangements that allow for change over time. The ergonomic design provides maximum comfort using rotational molding technology.

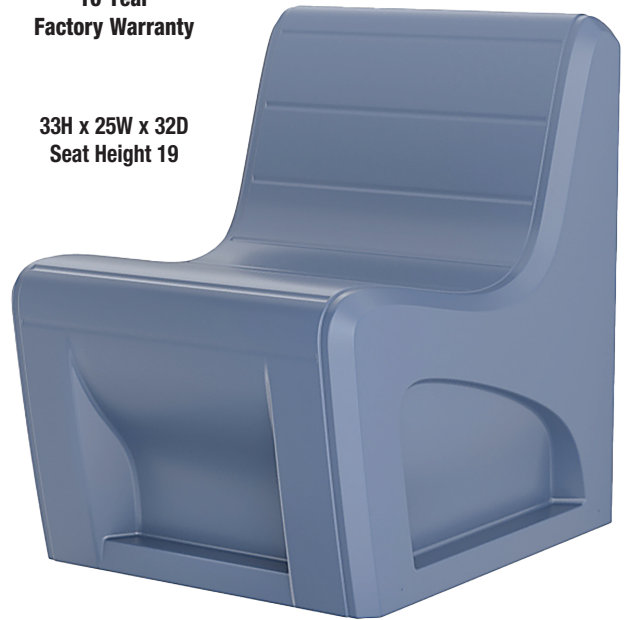


FEATURES:

- Rotationally molded design for increased strength. Constructed of high impact “no break” polyethylene. No steel or wood components
- Integral plinth base for increased stability and floor mounting integrity
- Can be bolted together in place, or to the floor via concealed pilot holes
- 1500 lb. Static Load, ANSI/BIFMA X5.1-2011
- Easy to clean, sanitize & maintain
- Can be easily filled with sandbags through optional ballast door on site to weigh down. Secures with tamper resistant screws
**Do not use loose sand*
- Passes Flammability UL 94 HB
- Tested to ISO 22196 showing a >99% reduction in bacteria
- Flame Retardant (passes Cal 133)
Test reports available upon request
- Manufactured to ISO Quality Standards in the USA 

**10 Year
Factory Warranty**

**33H x 25W x 32D
Seat Height 19**



ITEM	COLOR
272AQ	Aqua
272BK	Black
272BG	Blue Gray
272BN	Brown
272BY	Burgundy
272GY	Gray
272GN	Green
272IG	Indigo
272MB	Midnight Blue
272SD	Sand
272SB	Slate Blue
272SG	Stone Gray

ITEM	COLOR
272AQS	Aqua with Access Door
272BKS	Black with Access Door
272BGS	Blue Gray with Access Door
272BNS	Brown with Access Door
272BYS	Burgundy with Access Door
272GYS	Gray with Access Door
272GNS	Green with Access Door
272IGS	Indigo with Access Door
272MBS	Midnight Blue with Access Door
272SDS	Sand with Access Door
272SBS	Slate Blue with Access Door
272SGS	Stone Gray with Access Door

Available in



Our Intense Use Products Contribute to a Safe and Humane Environment.

OVERVIEW

The Sync Slim Chair is a versatile chair intended for lounging, with the ability to stand alone or be bolted together with any Endurance™ 'In Sync' Modular Chair. The ergonomic design provides maximum comfort using rotational molding technology.

Manufactured to ISO Quality Standards in the USA.

FABRICATION/MATERIAL

Durable, one piece, rotationally molded design for increased strength. Constructed with high impact "no break" polyethylene. Flame Retardant (as shown passes Cal 133). Test reports available upon request.

COLOR Aqua, Black, Blue Gray, Brown, Burgundy, Gray, Green, Indigo, Midnight Blue, Sand, Slate Blue, Stone Gray

WEIGHT 38 lbs.

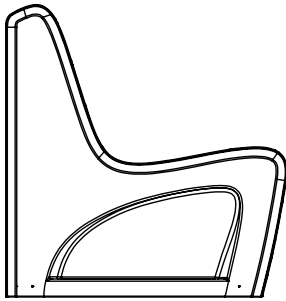
OPTIONS Can be bolted to the floor via concealed pilot holes OR filled with sandbags through optional ballast door on site to weigh down. Hardware bit size: T27.

WARRANTY 10 Year Factory Warranty.

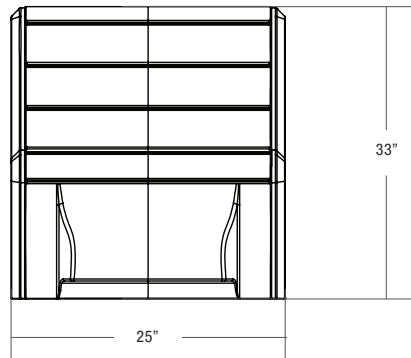
MAINTENANCE Easy to clean, sanitize & maintain.

STATIC LOAD +1000 lbs.

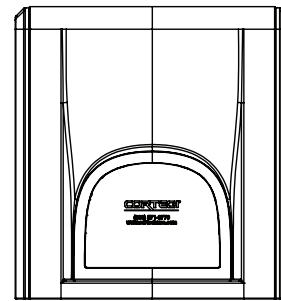
SIDE VIEW



FRONT VIEW



REAR VIEW



TOP VIEW

