

Manual de usuario – Español



REF

5045



SWL: 150 kg/330 lbs

The new, smaller version of EasyGlide, oval are used in pairs to facilitate positioning further back in chair. Using EasyGlide, a more active user can push or shuffle himself backwards in the chair, into a correct and comfortable position.

The sliding boards are small and convenient, with soft, round shapes and smooth surfaces; features which make them very easy to place and remove and to always have readily available and close at hands.



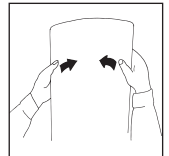
Check Safety

Visual inspection

Check the condition and function of the assistive device regularly. Check to ensure that fabric is not worn or faded. If there are signs of wear, the product must be discarded.

Stability test

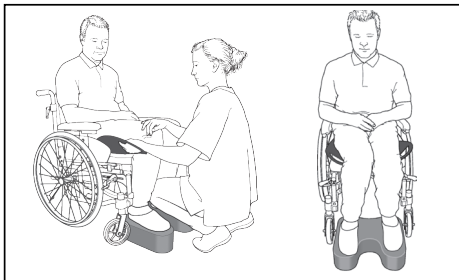
Carefully bend the EasyGlide to check strength and durability. The board should be both elastic and rigid. Discard the EasyGlide when its strength and durability are diminished.



Important information

Do not leave the user unattended during a transfer situation.

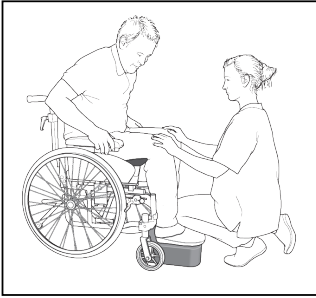
Placement



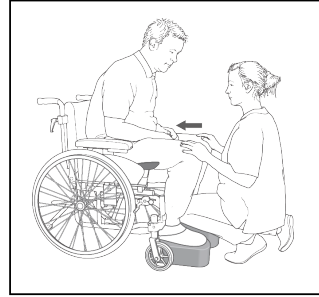
Place the EasyGlide by guiding it under the user's thighs. This is facilitated by placing a FootStool under the feet and thereby raising the user's thighs from the underlying surface. Guide the EasyGlide in under the user's seat.

Do the same on the other side.

Farther back in the chair



Ask the user to lean forward and push herself/himself farther back in the chair with the support of the armrests. The caregiver should remain in front of the user to ensure safety.



If the patient is unable to move farther back in the chair, the caregiver can push against the patient's knees to reposition the patient farther back in the chair. Ask the patient to lean forward, or ask another caregiver to assist.

Removal



The transfer slides are removed by grasping the handles and drawing outward. Prevent the user's body from moving by holding the user as the slides are pulled out.

Material

Polyethen

Care of the product

The surface of the product can be cleaned with warm water or a soap solution. If disinfection is needed, 70 % ethanol, 45 % isopropanol or similar should be used.

La nueva versión más pequeña del EasyGlide, oval se usa por pares a fin de facilitar la recolocación posterior en la silla. El EasyGlide permite a los usuarios más activos arrastrarse por sí mismos hacia atrás en la silla hasta alcanzar una posición correcta y cómoda.

Las planchas de deslizamiento son pequeñas y prácticas, con una forma suave y redondeada y superficies blandas, lo que facilita en extremo su colocación y retirada y su constante disposición para hacer uso de ellas.



Inspección operacional

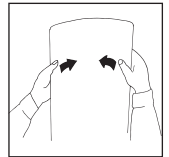
Inspección visual

Compruebe periódicamente el estado y funcionamiento del dispositivo de asistencia. Asegúrese de que el tejido no esté desgastado o desteñido. Si hay indicios de desgaste, el producto deberá ser desechado.

Prueba de estabilidad

Pliegue con cuidado del dispositivo de asistencia para comprobar su resistencia y durabilidad.

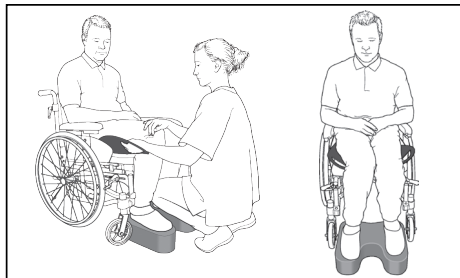
La alfombrilla debe ser elástica y rígida al mismo tiempo. Deseche del dispositivo de asistencia si disminuyen su resistencia y durabilidad.



Información importante

No deje al usuario desatendido durante una operación de traslado.

Colocación



Coloque el EasyGlide remitiéndolo debajo de los muslos del usuario. Esta tarea resultará más sencilla situando un FootStool debajo de los pies para alzar de la superficie subyacente los muslos del usuario. Sitúe el EasyGlide bajo el trasero del usuario.

Repita la operación en el otro lado.

Colocación posterior en la silla

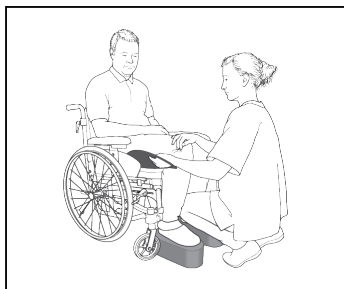


Pida al usuario que se incline hacia adelante y se empuje a sí mismo hacia atrás de la silla con ayuda de los reposabrazos. El asistente debe permanecer delante del usuario para garantizar su seguridad.



Si el usuario es incapaz de echarse hacia atrás en la silla, el asistente puede presionar las rodillas del usuario a tal fin. Pida al usuario que se incline hacia adelante o solicite la ayuda de otro asistente.

Extracción



Las deslizaderas de traslado se extraen agarrando las asas y tirando de ellas hacia afuera. Impida que se mueva el cuerpo del usuario sujetando a este durante la extracción de las deslizaderas.

Material

Poliétileno

Cuidado del producto

La superficie del producto se puede limpiar con agua caliente o con una solución jabonosa. Si se precisa una desinfección, se debe utilizar etanol al 70%, isopropanol al 45% o similar.

Simple solutions for great results

SystemRoMedic™ is the name of Handicare's unique easy transfer concept, the market's widest and most comprehensive range of clever, easy-to-use and safe transfer and lifting aids designed to make life easier, both for the user and for the caregiver. SystemRoMedic™ is a complete solution that provides for the majority of patient transfer or manual handling requirements. From the simplest to the most complex scenarios, from the lightest to the heaviest. The concept encompasses assistive devices for four different categories of transfers:

- Transfer, assistive devices for manual transfers of users between two locations.
- Positioning, assistive devices for manual repositioning of users within the same location.
- Support, assistive devices for mobility support e.g., during sit-to-stand or gait training.
- Lifting, assistive devices for manual and mechanical lifting of users.

Improved work environment, improved quality of care and cost savings

The philosophy behind SystemRoMedic™ is focused on the prevention and reduction of occupational injuries while allowing users to experience a greater sense of independence and dignity. Through a unique combination of training and a complete range of efficient transfer aids, SystemRoMedic™ offers improvement of both work environment and quality of care and, at the same time, achieves significant cost savings.

Handicare offers solutions and support to increase the independence of disabled or elderly people as well as to improve the convenience of those who are caring for them.

The Handicare Group is one of the leading healthcare companies in Europe with its own manufacturing organizations and sales companies in Norway, Sweden, Denmark, Germany, the Netherlands, Great Britain, France, China, Canada and the USA. Handicare's products are also distributed by partners in more than 40 countries worldwide. Our wide range of high-quality products includes various manual and power wheelchairs, seating systems, scooters, a complete easy transfer system and other patient handling aids, stairlifts, car adaptations, rise and recline chairs, and bathing and toileting products.