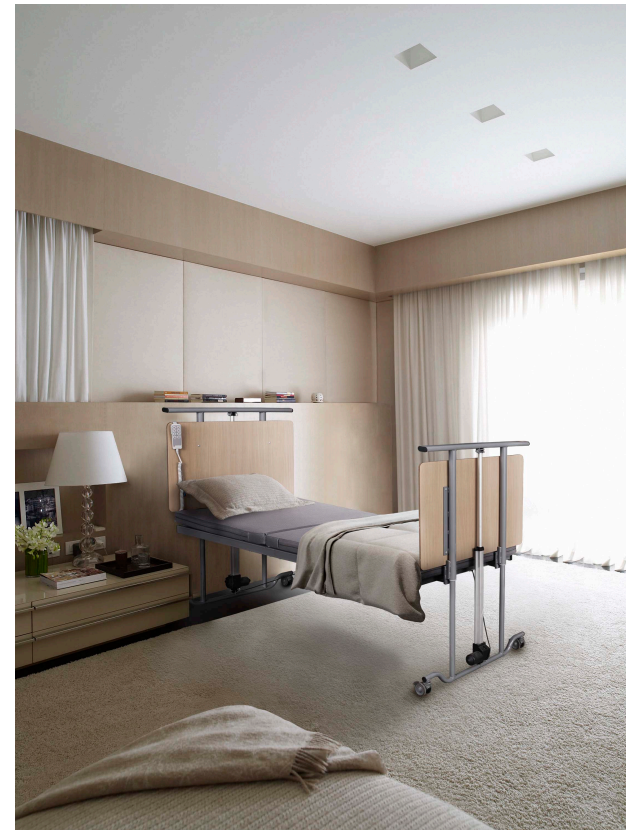


DESCEND ULTRA-LOW FLOOR BED

Descend ultra-low floor bed is our lowest bed that can be lowered to floor level. This helps to prevent falls and is therefore particularly suitable for people living at home and in care homes that are at risk of falling



BED FRAME SPECIFICATIONS

Overall Length:	88"
Overall Width:	38"
Weight Capacity:	375 lbs
Safe Work Load:	395 lbs
High Height:	25"
Low Height:	2.7"
Castor Diameter:	4"
Positioning:	70° Head Angle, 30° Foot Angle
Trendelenburg:	14° Trend / Reverse Trend
Mattress Dimensions:	36" Wide, 80" Long
Power Requirements:	115 VAC, 60 Hz, 2 AMP



DESCEND ULTRA-LOW FLOOR BED

Provides you, the caregiver, with peace of mind, and your patient with world class care and comfort



Perfect for patients and caregivers

DESCEND

ULTRA-LOW FLOOR BED



Optional foldable 3/4 side rail



Trendelenburg and Reverse Trendelenburg function



Hand pendant with single-fault safety and lock function



- Maximum patient weight of 375 lb and a safe working load of up to 395 lb
- Electric height adjustment ranges from 2.7 inches to 25 inches
- Back rest adjustable from 0-70 degrees and foot rest adjustable from 0-30 degrees
- Mechanical adjustment of the foot rest to 5 different positions
- Mattress retainers at the head and foot sections
- Steel construction with wood inner paneling
- 9V battery backup for emergency lowering in case of power failure

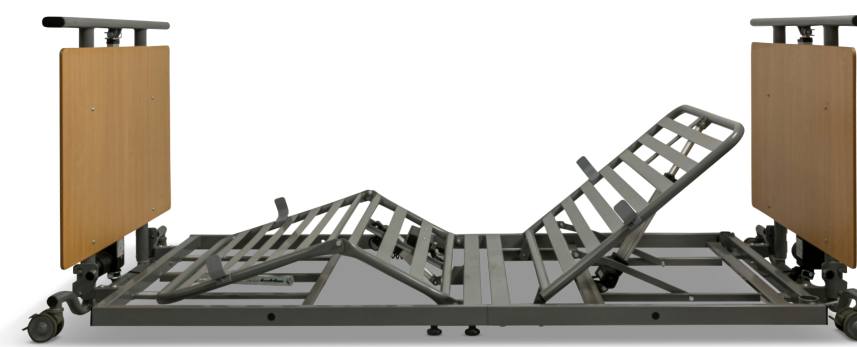
Descend ultra-low floor bed is ideal for fall prevention



4 Castors that can be locked individually



Wood paneled headboard and footboard



Low height under 3 inches