

## Instruction Manual

### **Defender Reha „crotch strap extension“ (item no. 514)**

#### **WARNING!**

Only use Defender Reha „crotch strap extension“ (item no. 514) in **Booster Mode**.

Read instructions for proper installation carefully.

You **MUST** always use vehicle 3-point lap-and-shoulder belt when restraining the child in **Booster Mode**. The integrated harness system is **only for positioning** children with special needs.

1. Preparations for Defender car seat 886 US or 888 CAN **only**
  - a. Convert Defender car seat 886 US or 888 CAN to Booster Mode



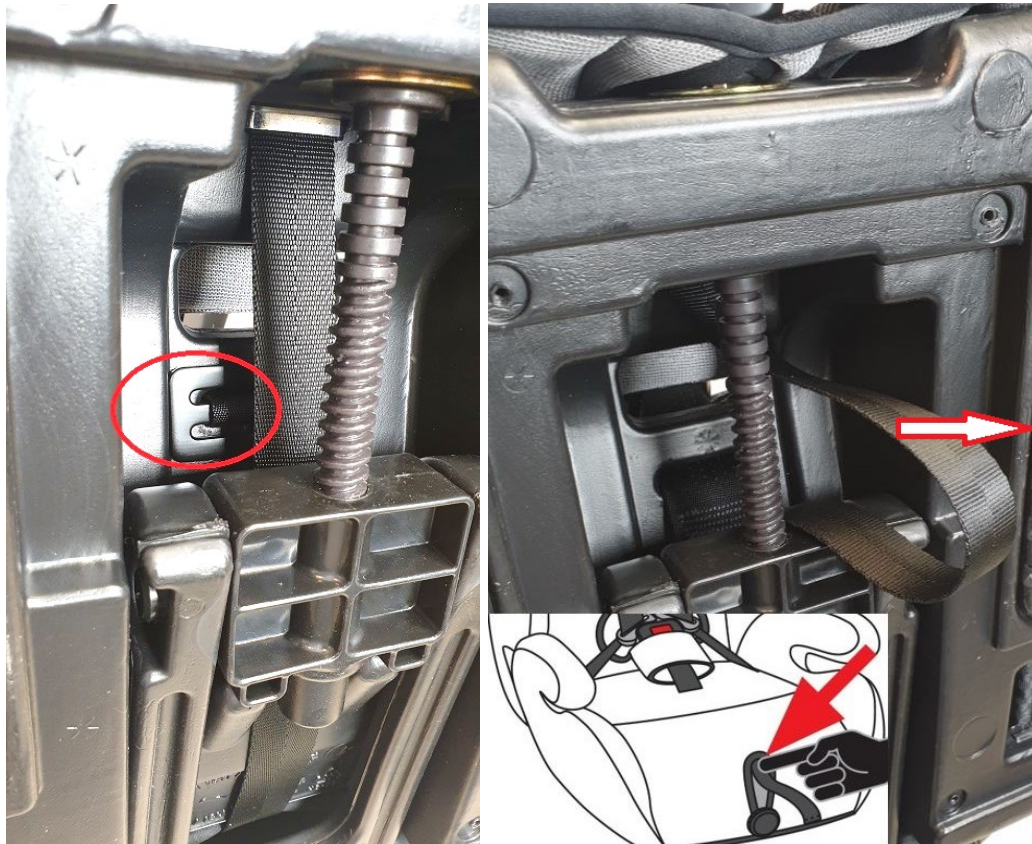
Cut off top tether as shown in picture below.

2. Install crotch strap extension
  - a. Remove base plate while unscrew 4 phillips screws



b. Access to standard crotch strap

To get easier access to this space press and hold harness adjustment button and pull strap.



c. Uninstall standard crotch strap

Cut off harness buckle from standard crotch strap. Harness buckle will be re-installed to crotch strap extension later. Then pull out metal locking plate with crotch strap.



d. Install new crotch strap extension (item no. 514)

First take off end cap from extension.



Following parts you need now:



Guide strap through belt buckle from behind



Now guide strap through lock buckle strap adjuster



Now attach end cap to crotch strap. Guide strap through slit 1 then coming from back through slit 2. Then press end cap together until it clicks.



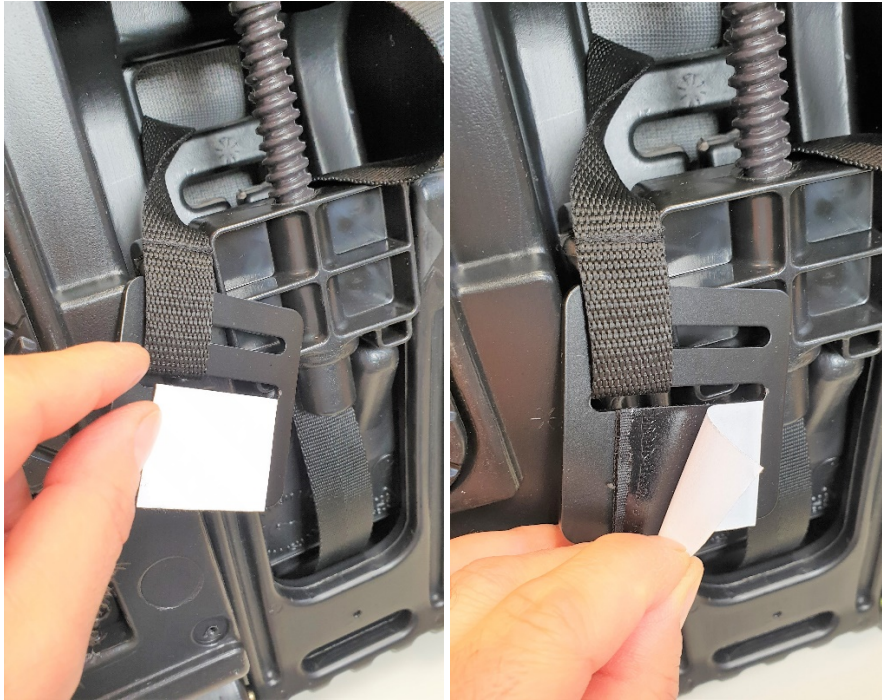
Before installing please make sure crotch strap extension with belt buckle is assembled correctly.



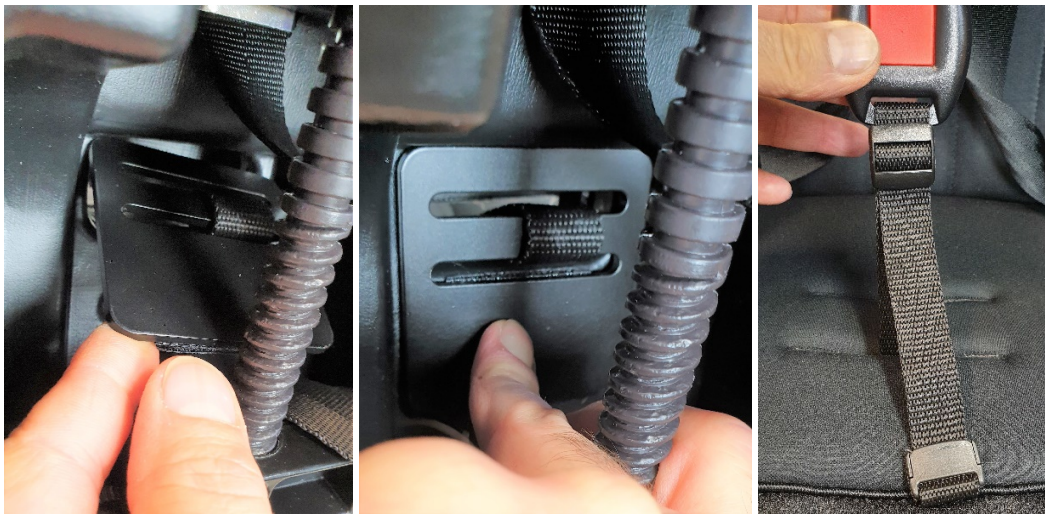
Guide belt buckle facing forward through big slot from underneath seat.



Pull off protection from adhesive surface of hook and loop fastener.



Position metal locking plate as far as possible to the front of slot. Then press down metal locking plate so adhesive surface will glue to seat shell.



e. Re-install base plate with 4 phillips screws.

3. Length adjustments  
Adjust strap through lock buckle strap adjuster.



Should you have further questions or problems, please contact your specialist dealer or us directly.

**Our address:**

Thomashilfen North America  
7936 Occidental Ave S  
Seattle WA 98108  
Phone: 886-870-2122  
email: [info@thomashilfen.com](mailto:info@thomashilfen.com)  
[www.thomashilfen.us](http://www.thomashilfen.us)