



PDAC/  
MEDICARE  
APPROVED

**NEW TECHNOLOGY**

# **DISC DISEASE SOLUTIONS**

## **Spinal-Air Decompression Belt & Collar**

**Disc Disease Solutions** introduces a revolutionary approach in the treatment of lower back and neck pain due to spinal diseases and injuries.

Our unique and patented Vertical Air Pressure Technology sets our products apart from all other ambulatory supports.



**Disc Disease Solutions, Inc.**



PDAC Approved for L0637

# DDS DOUBLE - LUMBAR TRACTION

**THE MOST VERSATILE BRACE OF ITS KIND!**  
**“Love your life without lower back and radiating pain!”**



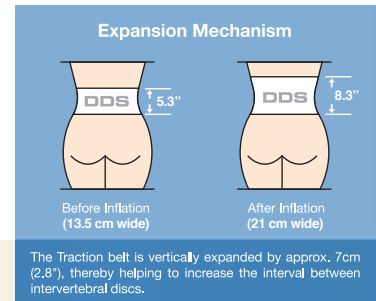
Before Inflation (Rear View)



After Inflation w/ Panel (Rear View)



After Inflation w/ Panel (Front View)



**The process is simple:** Our unique and patented Vertical Air Pressure Technology creates traction as the brace is inflated. This action increases the intervertebral disc space, decreases axial loading, and the pressure applied on the nerve root is relieved. Pain is reduced while assisting active rehabilitation.

The **DDS DOUBLE** Spinal-Air Decompression Braces function to provide therapeutic relief when inflated with air by anchoring up underneath the rib cage pushing upwards and down against the pelvic girdle pushing downwards. This action stretches the torso vertically diverting the weight-bearing forces away and reducing pressure within the lumbar spine region.

Our LSO Decompression Braces are the ideal solution for patients who cannot tolerate the discomforts of a rigid body jacket yet require similar support. It is especially valuable for pre and post surgery; as the patient progresses and requires less support, the detachable rigid panels can be removed to create a semi-rigid support, easily converting in to a soft LSO and providing greater flexibility.

Our Belts can be discreetly worn under clothing allowing you to perform daily activities and enabling those with an active lifestyle to enjoy leisure activities pain-free.

## TYPICAL INDICATIONS

- Herniated / Bulging discs
- Lumbar acute / chronic sprain
- Spondylolysis and spondylolisthesis
- Compression fracture in the lumbar region
- Failed surgery syndrome
- Low back pain due to physical and/or physiological conditions
- Strenuous jobs requiring heavy lifting and/or long hours driving
- Degenerative disc disease
- Spinal stenosis
- Sciatica
- Congenital weakness in waist

### 1 AIR INJECTION NOZZLE

Allows simple connection to pump for inflation. Allows for very easy pressure adjustments and deflation.

### 2 100% COTTON LINING

Long-term comfort is provided by a high quality, natural, cotton lining. Protects skin and diminishes sensitive skin problems.

### 3 DUAL SUPPORT VELCRO ATTACHMENTS

Provides additional security with easy adjustments.

### 4 ANTERIOR AND POSTERIOR RIGID PANELS

Detachable panels...



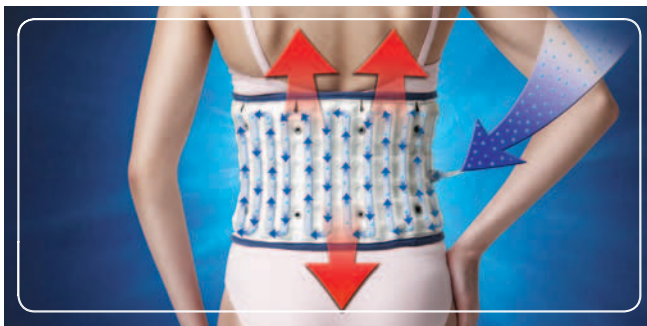
Hand Air Pump

# FEATURES OF DDS

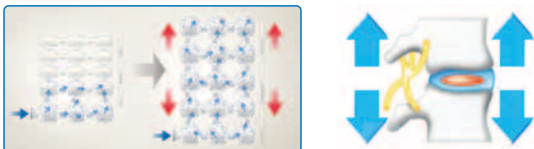


- Relaxes muscle spasms, muscle cramps and helps relieve strain and pain
- Decreases axial loading • Increases disc height
- Advanced tubeless air cell design for narrow fit
- Can be worn discreetly under clothing
- Helps maintain proper posture (Improper posture places the upper body weight on the discs that causes back pain)
- Assists individuals with strenuous jobs
- Very lightweight and comfortable
- Made of 100% highly durable soft cotton lining
- Waterproof – moisture-proof resistant material for machine washing
- Simple to use

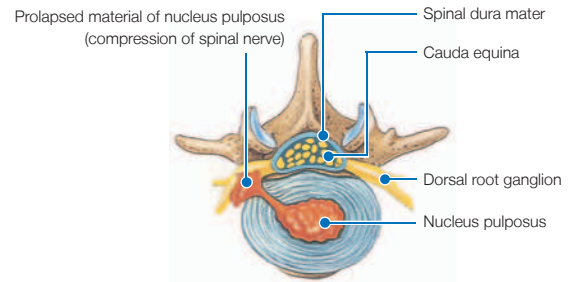
## VAP™ Vertical Air Pressure Technology



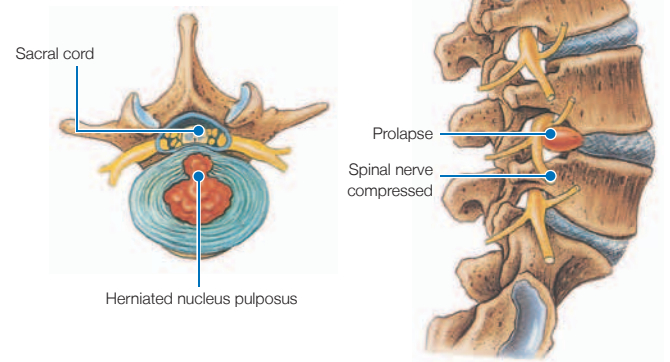
VAP™ Technology delivers high vertical air pressure to create traction in the affected area and to protect the vertebrae against gravity.



Our uniquely designed air cells evenly distribute air pressure effectively increasing the intervertebral disc space.



Herniated nucleus pulposus(disc)  
(Spinal nerves may be compressed laterally)



## MORE FEATURES



**DDS is manufactured under the following standards**

- ISO 9001: 2000(International Quality Management System)
- ISO 13485 (International Quality System Medical Devices)
- EN 46002(European Quality System Medical Devices)
- CE Mark
- FDA ER No. 9611754 and Device Listing No. B 115761 in USA
- Notification No. BE/CA01/2-03702-000011 Belgium
- Notification No. Be/CA01/2-03702-00002 Belgium
- Clinical consultation: Department of Orthopedic Surgery, Inje University, Seoul Paik Hospital, Korea
- Korean Patent No. : 142202
- Japanese Patent No.: 2911437
- US Patent No.: 5980560
- International application No.:PCT/KR00/00368

## DDS DOUBLE SIZING CHART

SIZE	TORSO MEASUREMENT	PANEL SIZE
S	26~28 inch	S
M	29~32 inch	M
L	33~35 inch	M
XL	36~38 inch	M
2XL	39~41 inch	L
3XL	42~44 inch	L
4XL	45~48 inch	XL
5XL	48~51 inch	XL

\*Measurement around the navel  
\*Extension piece available for larger sizes



Disc Disease Solutions, Inc.