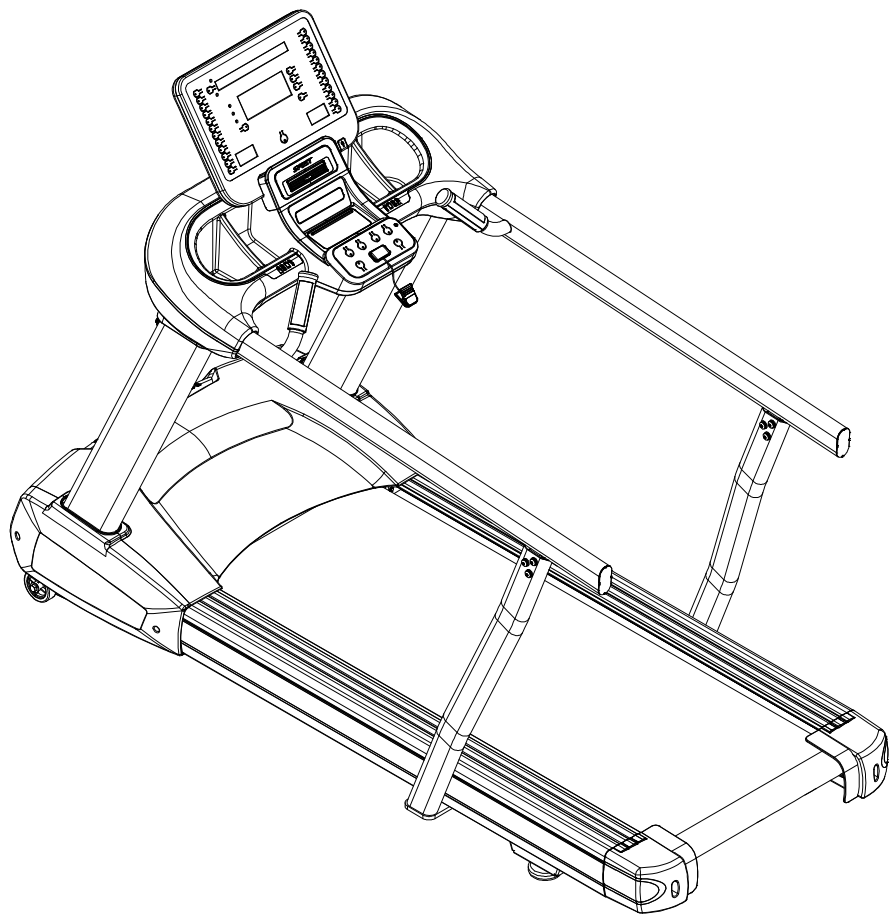


CT800 & CT850

EXTENDED HANDRAILS INSTALLATION GUIDE





Congratulations on your new Extended Handrails and welcome to the Spirit Fitness family!

Thank you for your purchase of this handrail extension from Spirit Fitness. This handrail extension was manufactured by one of the leading fitness manufacturers in the world and is backed by one of the most comprehensive warranties available. Through your dealer, Spirit Fitness will do all we can to make your ownership experience as pleasant as possible for many years to come. If not purchased direct from Spirit Fitness, the local dealership where you purchased this bracket is your administrator for all Spirit Fitness warranty and service needs. Their responsibility is to provide you with the technical knowledge and service personnel to make your experience more informed and any difficulties easier to remedy.

Please take a moment at this time to record the name of the dealer, their telephone number, and the date of purchase below to make any future, needed contact easy. We appreciate your support and we will always remember that you are the reason that we are in business. Please complete and mail your registration card today.

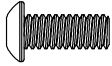
Yours in Health,
Spirit Fitness

NAME OF DEALER _____

DEALER PHONE # _____

PURCHASE DATE _____

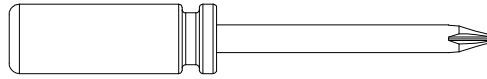
CT800/CT850 EXTENDED HANDRAILS TOOLS



#5- M8 × 20L
Button Head Socket Bolt (6pcs)



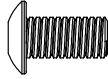
#6- Ø8.5 × 1.5T
Split Washer (6pcs)



#11- Phillips Head Screw Driver (1pcs)



#7- Ø8.5 × Ø18 × 1.5T
Flat Washer (6pcs)



#8- 3/8" × 3/4"
Button Head Socket Bolt (12pcs)



#12- L Allen Wrench(5×25×67L) (1pcs)



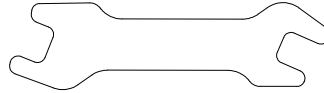
#13- L Allen Wrench(6×26L×76L) (1pcs)



#9- Ø10 × 2.0T
Split Washer (12pcs)

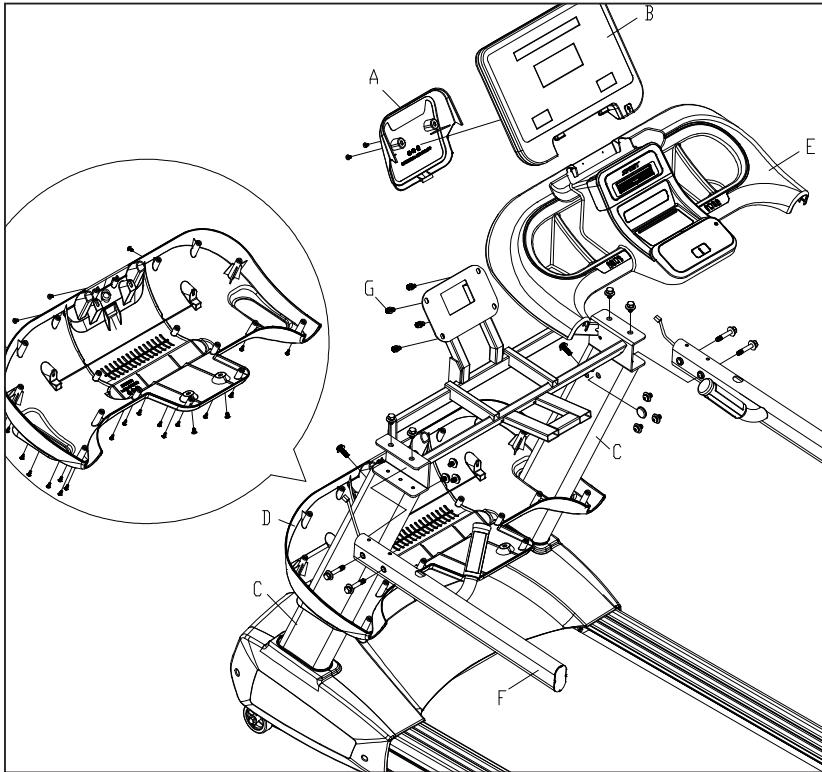


#10- Ø3/8" × Ø19 × 1.5T
Flat Washer(12pcs)



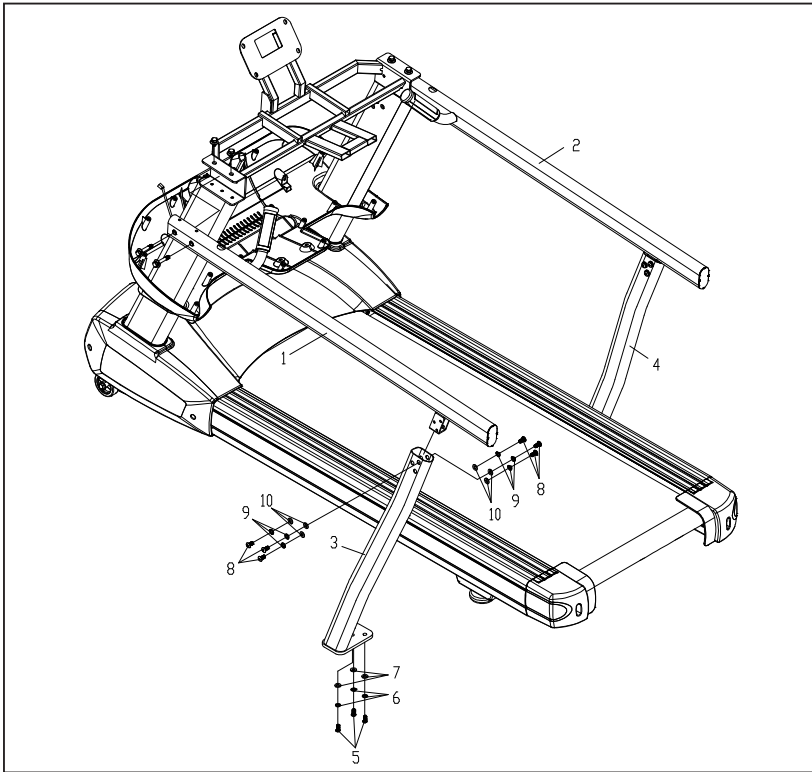
#18- 13/14m/m Wrench (1pcs)

CT800/CT850 EXTENDED HANDRAILS STEP ONE



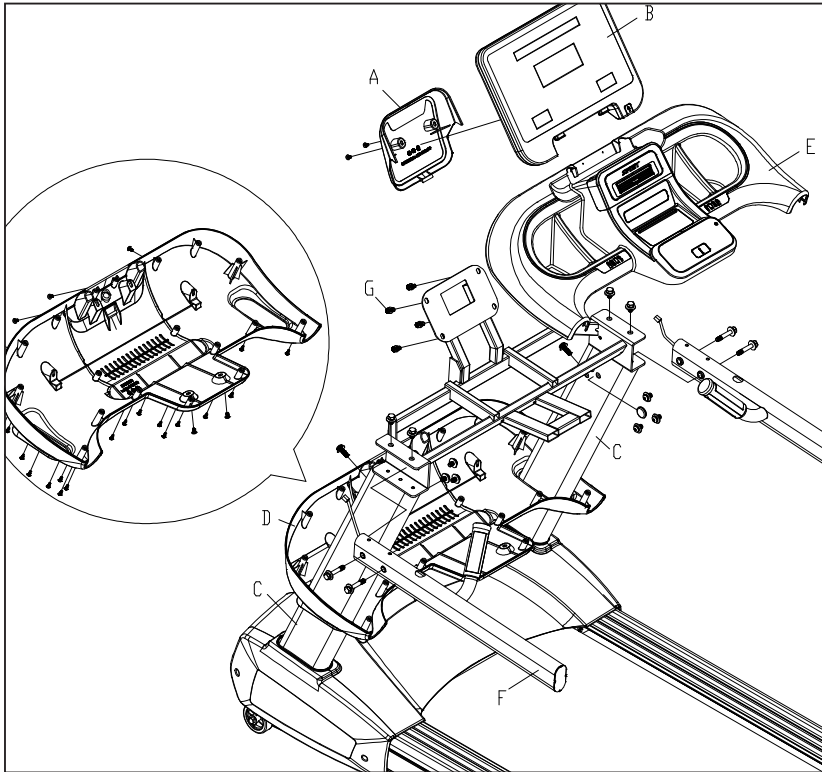
1. Remove all the **Screws (A)** from back of console using the **Phillips Head Screw Driver (No.11)**, then unplug two **Handpulse Cables & one Computer Cable**. Remove **Ground Wire (B)** from Console using the **Phillips Head Screw Driver (No.11)**. Remove the **Screws (G)** from Console Mount using the **L Allen Wrench (No.12)**.
2. Remove the **Upper Screws (C)** from the **Left Upright & Right Upright**, then remove the **End Cap**.
3. Remove all the **Screws (D)** from **Console Bottom Cover (Inset Image)** using the **Phillips Head Screw Driver (No.11)**, then take off **Console Upper Cover (E)**.
4. Remove the **Handle Bar (L) & Handle Bar (R) (F)** using the **Wrench (No.18)**

CT800/CT850 EXTENDED HANDRAILS STEP TWO



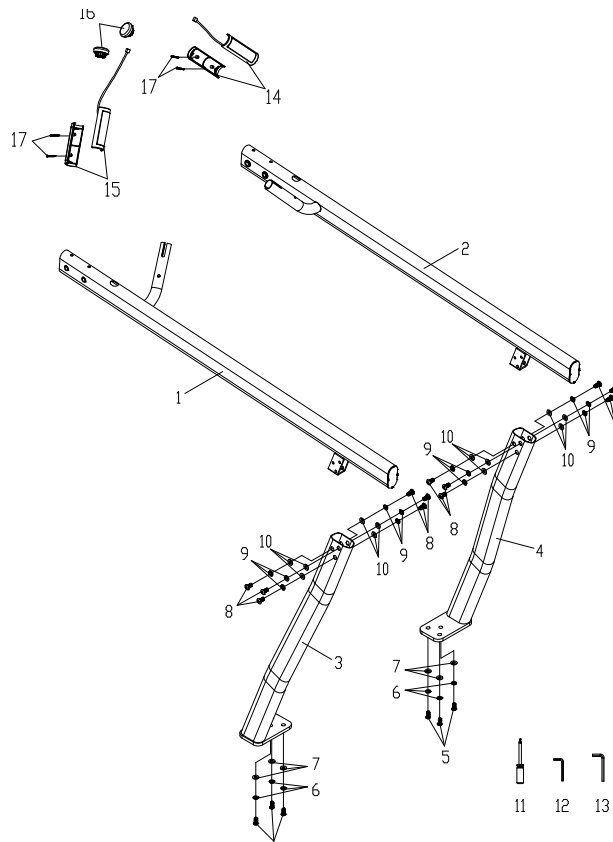
1. Install Left Upright (No.03) & Right Upright (No.04) to main frame, then firmly fasten Button Head Socket Bolt (No.05) through a Split Washer (#06) and Flat Washer (No.07) to bottom main frame using a L Allen Wrench (No.12).
2. Install Handle Bar (L)(No.01) & Handle Bar (R)(No.02) to console mount & Left Upright (No.03) & Right Upright (No.04), then firmly fasten screws on Handle Bar (L)(No.01) & Handle Bar (R)(No.02) to console mount using the Wrench (No.18). Firmly fasten Button Head Socket Bolt (No.08) through Split Washer (No.09), and Flat Washer (No.10) to Left Upright (No.03) & Right Upright (No.04) using the L Allen Wrench (No.13).

CT800/CT850 EXTENDED HANDRAILS STEP THREE



. Finally, assemble the parts & fasten the screws which have been taken off in STEP 1.

CT800/CT850 EXTENDED HANDRAILS EXPLODED VIEW



CT800/CT850 EXTENDED HANDRAILS PARTS LIST

CT800ExtendedHandRails_ADD33-13 Part List_ST8600		
1	Handle Bar (L)	1
2	Handle Bar (R)	1
3	Left Upright	1
4	Right Upright	1
5	M8 x 20L_Button Head Socket Bolt	6
6	Ø8.5 x 1.5T_Split Washer	6
7	Ø8.5 x Ø18 x 1.5T_Flat Washer	6
8	3/8" x 3/4"_Button Head Socket Bolt	12
9	Ø10 x 2.0T_Split Washer	12
10	Ø3/8" x Ø19 x 1.5T_Flat Washer	12
11	Phillips Head Screw Driver	1
12	L Allen Wrench(5x25x67L)	1
13	L Allen Wrench(6x26Lx76L)	1
14	900m/m_Handpulse Assembly(SMP-03)	1
15	900m/m_Handpulse Assembly(SMR-03)	1
16	Handpulse End Cap	2
17	3 x 25L_Tapping Screw	4
18	13/14m/m_Wrench	1
200410		