

CSC900 2022 Service Manual

(Magnetic system)



Table of Contents

1. Maintenance Cautions.....	3
2. Tools.....	3
3. Product Details.....	3
4. Part Identification & Component Theory.....	4
5. Installation.....	5
6. Troubleshooting.....	10
7. Part Replacement.....	11

1. Maintenance Cautions

- Turn off the power when replacing any parts such as electronic meter, brake system, generator, etc. Avoid personal or product injury that may be caused by energized operation.
- When replacing parts, please use machine's original parts and make sure the product type and specification match. If you need to replace parts with different specifications for testing in special condition, please contact our technical staff for confirmation before operation.
- When replacing parts, especially electrical parts, clean the parts and their surroundings before assembly to avoid damage caused by screws and other debris.

2. Tools



Screwdriver



Socket head wrench



Clyburn spanner



Pliers

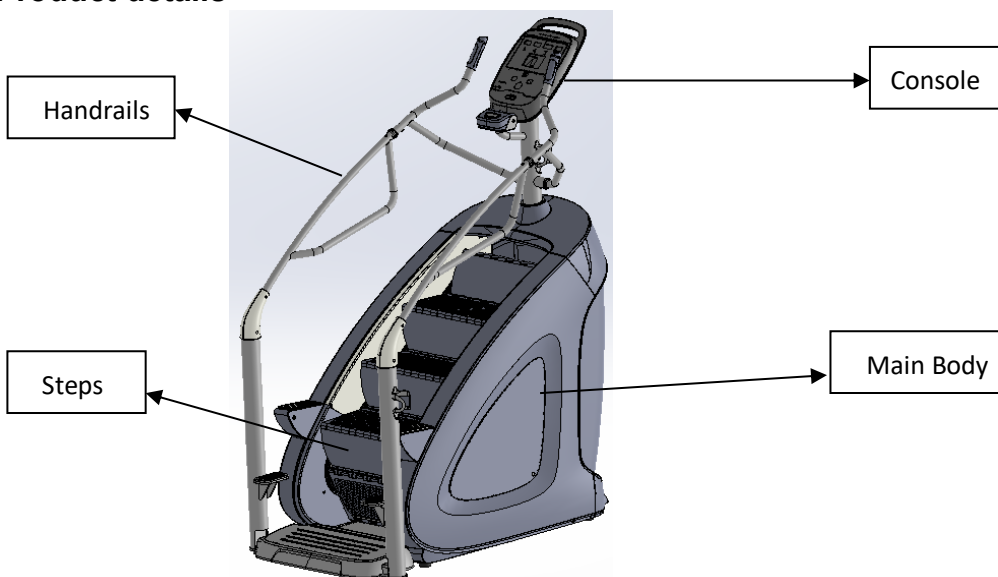


Multi-meter



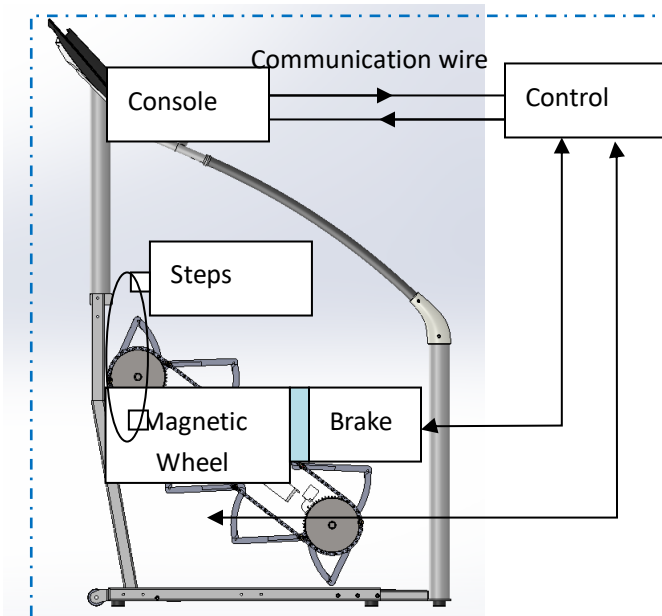
Electric soldering iron

3. Product details

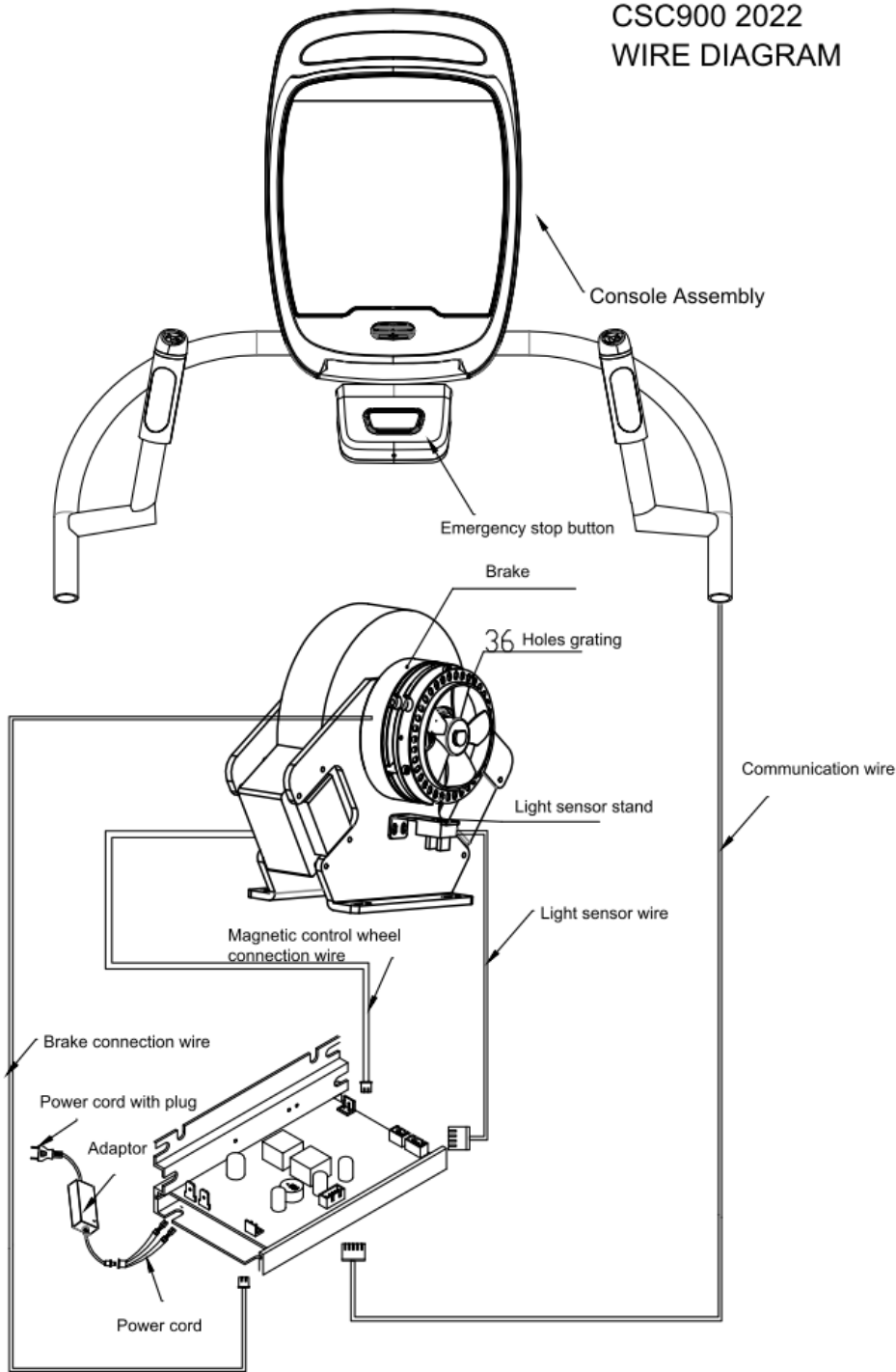


- Electronic meter: Electronic meter is a kind of human-machine interactive operation component, which can display fitness data: time, speed, distance, energy consumed, fitness program, etc.. The fitness person can control the machine operation, stop, speed increase or decrease through the button operation, and realize the input of instructions through the electronic meter.
- handrails: handrails as part of the machine body. As a safety auxiliary parts, at the same time the handrail has a design hand grip heartbeat, emergency stop switch and other operating parts.
- Treads : Important structural parts of the stair machine, stair component parts.
- Body : the most important part of the stair machine, internal running structure, motor, drive chain, lower control panel, etc. are working inside the body.

4. Part Identification & Component Theory



CSC900 2022
WIRE DIAGRAM



5. Installation

(1) Unboxing operation

1. Cut the packing tape and the top plank, remove the carton



1. Cut the straps



2. Cut the tape



3. Remove the top plank



4. Remove the bottom fixing plate of the carton



5. Cut the tape



6. remove screws



7. Remove the board



8. Take the carton up

2. Remove the bottom screw and straighten the machine. Disassemble the frame and take out the spare parts



1. Remove the bottom screw



2. Straighten the machine



3. Upright



4. Remove the back end plank



5. Remove screws on side iron frame



6. Remove one side iron frame



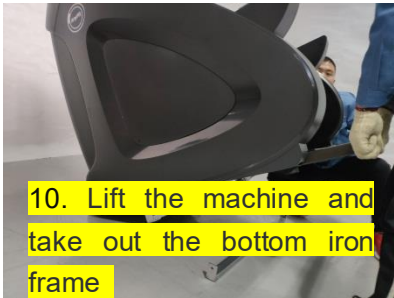
7. Remove the rear iron frame



8. Remove the top iron frame



9. Take out the top iron frame



10. Lift the machine and take out the bottom iron frame



Open console carton



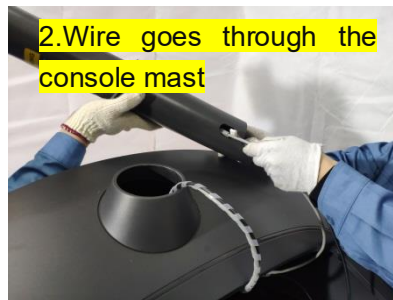
All spare parts

(2) Installation steps

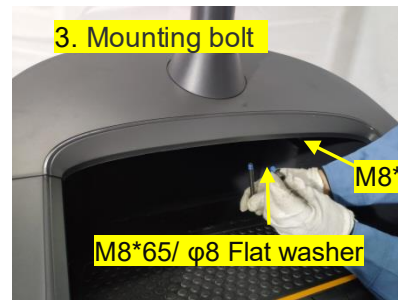
a) Secure console mast



1. Insert the decoration ring



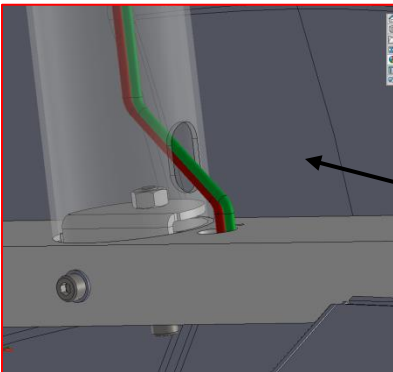
2. Wire goes through the console mast



3. Mounting bolt

M8*20/φ8 Flat washer

M8*65/ φ8 Flat washer



Put the communication wire into the console mast, attach it to the installation hole, and please mention: when placing the console mast downward, it is necessary to tighten up the communication wire at the same time to prevent clamping

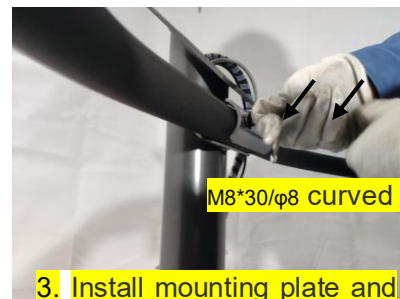
The internal structure is shown on the left, when placing the console mast downward, it is necessary to tighten up the communication wire at the same time to prevent clamping



1. Go the connecting wire through the hole



2. Secure the position of the horizontal handrail

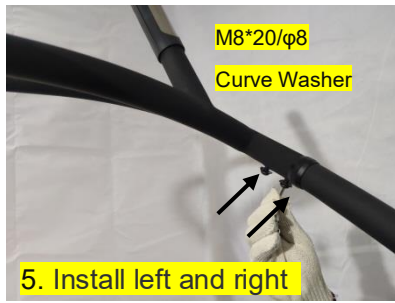


3. Install mounting plate and bolts

M8*30/φ8 curved washer



4. Secure the horizontal handrail (The bolt won't tighten)



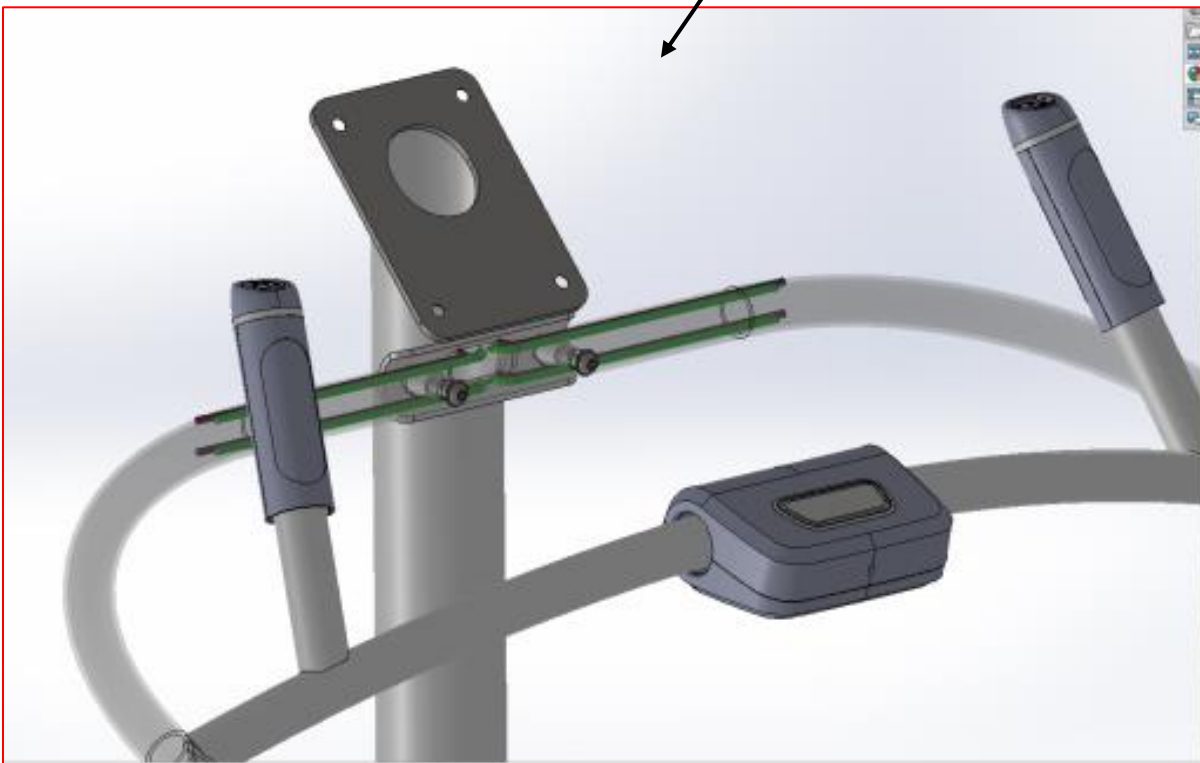
5. Install left and right handrails



6.OK

When installing the left and right handrails, pay attention to the direction: the fixed position is close to the iron plate, and the position of the bolt bulge is on the inside of the machine.

The internal structure here is as shown in the picture below. Pay attention: Prevent wire clamping during installation.



3. Install steps assembly



1. Install column assembly

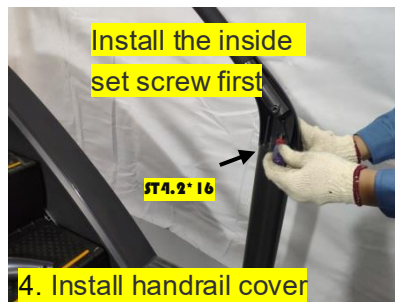
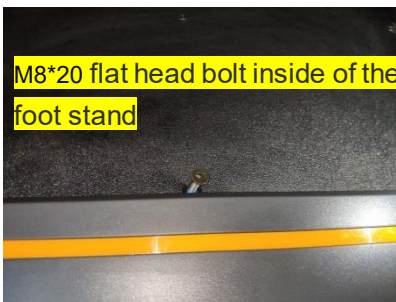


After the left and right handrails are installed, tighten the bolts

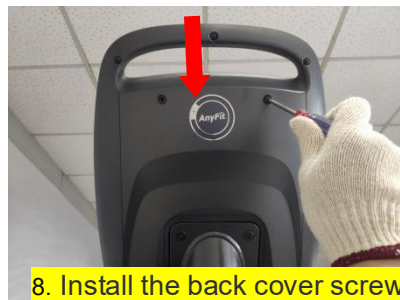
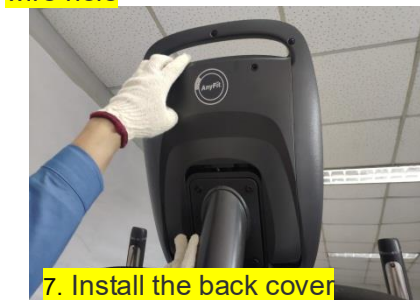
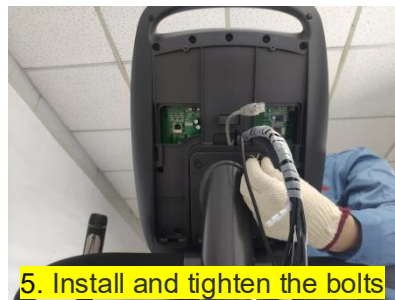
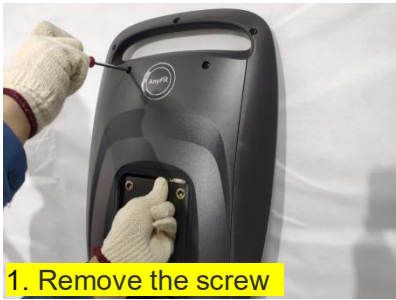
2. Fix left and right handrails



3. Install Step Base



4. Install console



5. . After installation, power on testing



6. Troubleshooting

Troubleshooting			
Item	Problem	Reason	Method
1	Press "START" to start, the machine speed is abnormal, 3 seconds after the stop, display data reset.	Light sensor failure	1. check whether the light sensor line is off or damaged 2. check whether the distance between the light sensor and the grating can be sensed Replace the light sensor
2	After pressing "START" to start, the brake does not turn on, the machine cannot run	the brake is no power or failure	1. Check whether the connecting wire is off and damaged 2. Separately supply 24V voltage to test whether the brake is open (there will be a "click" sound when it is open) Replace the power failure brake"
		Control board failure	Use a multimeter to measure whether the brake socket of the controller has 24V output voltage after starting Replace the controller"
3	After pressing "START" to start, the electronic meter shows ER02	Control board failure	MOS short-circuited Replace the controller
		The magnetic wheel connection wire is disconnected	Check the magneto wheel and the lower control connection wire, reinsert it
4	Press "START" to start, the electronic meter shows ER12 (can not brake)	The console not receive the controller data	Communication line failure (generally the communication line extrusion damage, you can use a multimeter to measure the upper and lower ends of the conductivity, not conductive is bad.) Lower control failure 1. replace the communication line 2. replace the lower control
5	After pressing "START" does not start, the electronic meter display ER11	Controller can not receive the electronic meter data	1. Communication line failure (generally for the communication line extrusion damage, you can use a multimeter to measure whether the upper and lower ends of the conductivity, not conductive for bad. 2. lower control failure a. replace the communication line b. replace the lower control
6	Key Failure	Membrane key failure	Bad membrane key or damaged wire Replace membrane keys
7	After power on, the console does not light up	1. Power adapter failure 2. Controller failure 3. Faulty connection wire 4. Console failure	Measure with a multimeter and exclude in turn 1. measure whether the adapter has 24V output 2. measure whether the lower control has 24V input and voltage output at the plug of the control line). 3. measure whether the communication line is on at both ends and whether there is power output.
8	Emergency stop switch failure or ER07 is displayed	The emergency stop switch is faulty or the emergency stop switch connection wire is loose or the wire sequence is wrong	Check if the connection wire is wrongly plugged and damaged or replace the emergency stop switch
9	After pressing "START" to start, the heartbeat data is not sensed.	The hand pulse wire problem	The handpulse wire is not good generally for the installation of extrusion broken, you can use a multimeter DC voltage file test hand-held heartbeat seat voltage, if there is no voltage is determined that the harness is not good.
10	The Console shows ER05	Controller hardware overcurrent	1. Check whether the motor is burned as a priority 2. Check the controller

7. Parts replacement

1. Removal of the body plastic cover



1. Remove the console



2. Remove the horizontal handle



3. Remove the cover #1 of handle



Remove the cover #2 of handle



4. Remove the left and right handle



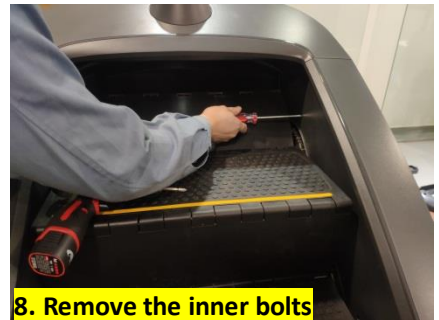
5. Take off the assembly of handle



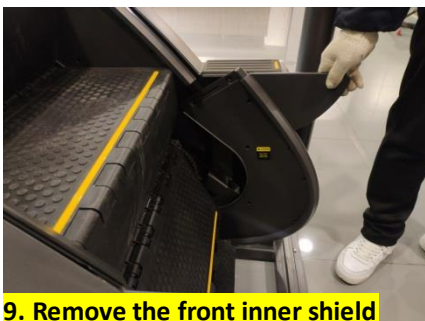
6. Remove the console welding



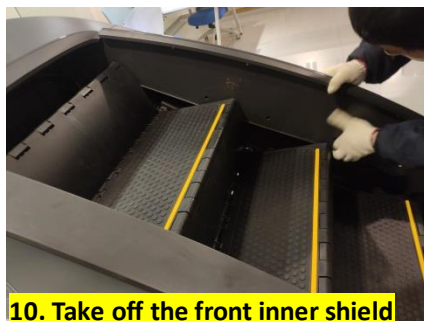
7. Take off the console welding



8. Remove the inner bolts



9. Remove the front inner shield



10. Take off the front inner shield



11. Removal of the housing bolts at the safety step



12. Remove the bolt #1 of plastic cover



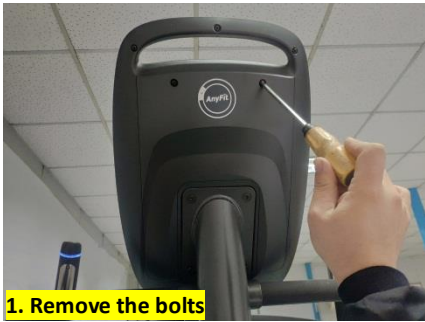
13. Remove the bolt #1 of plastic cover



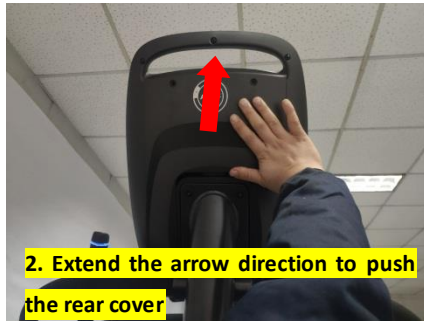
14. Unplug inside power cable and network cable connector



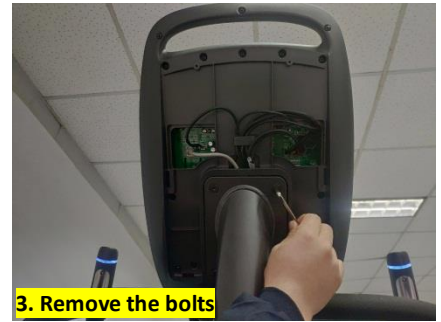
1. Console replacement



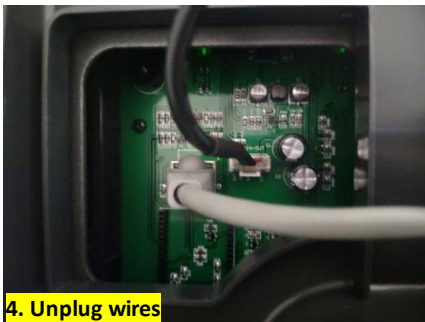
1. Remove the bolts



2. Extend the arrow direction to push the rear cover



3. Remove the bolts



4. Unplug wires



5. Take off the console

2. Magnetic wheel replacement



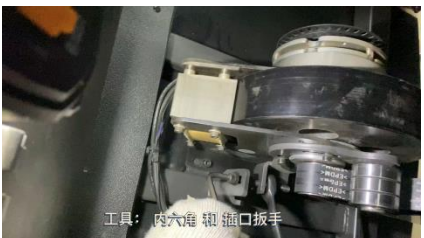
1. Remove the side cover



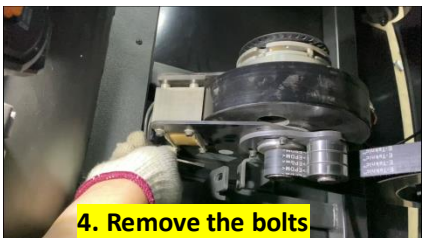
2. Remove a set of pedals (fix one end of the connecting shaft with a wrench and the other end with a power screwdriver with a socket, rotate it while pulling it outward)



Pull out the pedal fixing shaft from one side



3. Remove the belt tensioning plate



4. Remove the bolts



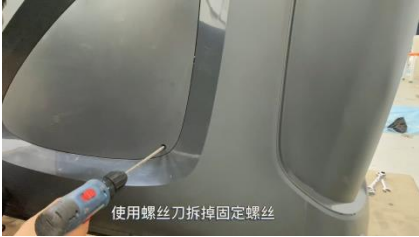
5. Remove the connection wire of control board



6. Take off the magnetic wheel



7. Control board replacement



1. Remove the side cover



2. Remove the connection wire of control board



3. Remove the bolts



Before replacing the control board, pay attention to take pictures to record the wire sequence.

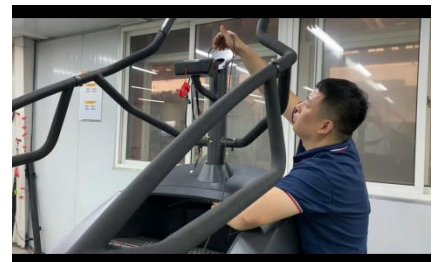
8. Communication wire replacement



1. Unplug the old communication wire from the console and fix with the new communication wire by tape



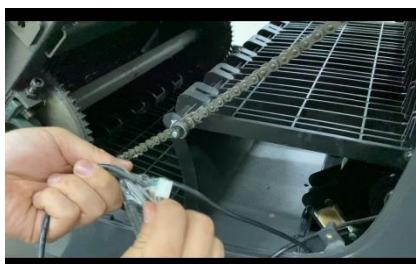
2. Cut off the fixed tie at the bottom of upright frame



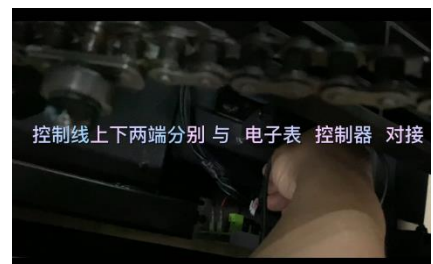
3. Pull the communication wire from bottom of upright frame



3. Pull the control wire from the bottom to the right position



4. Remove the tape



5. Connect the communication wire with the console and control board

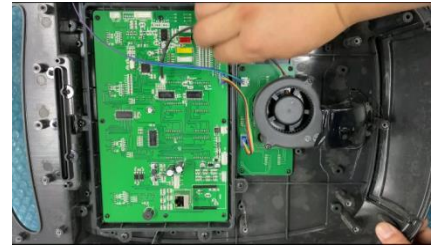
9. Console board replacement



1 Remove the rear cover of console



2. Remove the fixed plate



3. Unplug the connection wire



4. Unplug the membrane key wire



5. Remove the bolts



6. Take off the console board to replace